



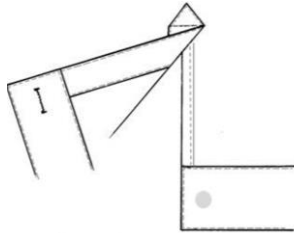

# Urban Outfitters

Minimum Make Manual

Section 3:

Menswear Woven Tops

# Urban Outfitters

<u>Construction Method</u>	<u>Photo</u>
<p><b>Collars &amp; Fusing</b> On all collars, plackets and cuffs suggested weight, 65-80grams</p>	
<p><b>Yoke panels</b> Bagged out with topstitch or twin needle finish.</p>	
<p><b>CB Seam</b> Where visible must be bound or French seamed</p>	
<p><b>Cuffs</b> Bagged out and edge stitched</p> <p><b>Cuff Plackets</b> To be bound. <u>Do not</u> use binding on cloths prone to seam slippage.</p>	
<p><b>Hem Gusset</b> To be used on shirting. 4cm deep / 4.5cm wide</p>	

# Urban Outfitters

## Construction Method

## Photo

### **Pin Hem**

0.3cm deep

0.5cm when using lightweight cloths such as chiffon.



### **Felled Hem**

Heavy weight fabrics and tailoring  
4cm deep

Stitch type:



### **Raw Seams**

To be finished with a topstitch (unless technologist requests otherwise)

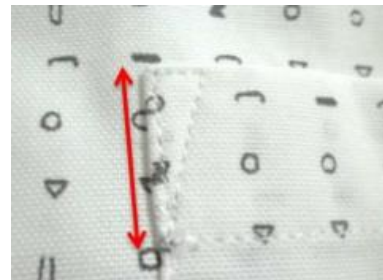


### **Bound Hem** (see above)

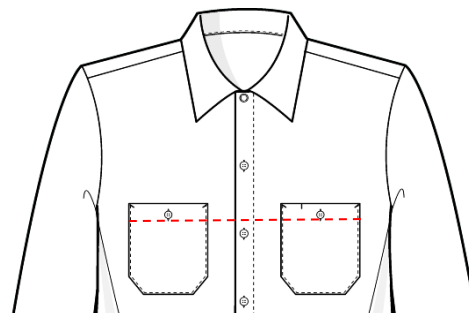


### **Pockets**

Must be reinforced at the pocket corners.  
Pocket turning to be fully bagged out, all raw edges to be concealed.



Pockets must be level and symmetrical  
(unless design dictates otherwise)



# Urban Outfitters

## Cloths Prone to Seam Slippage

Do not offer cloths that are not suitable for end use.

Consider fusing, open seams or French seams.

Plackets to be grown on. Do not bind placket edges (see packet construction above).

