

# Psoriasis Comorbidity Pathway

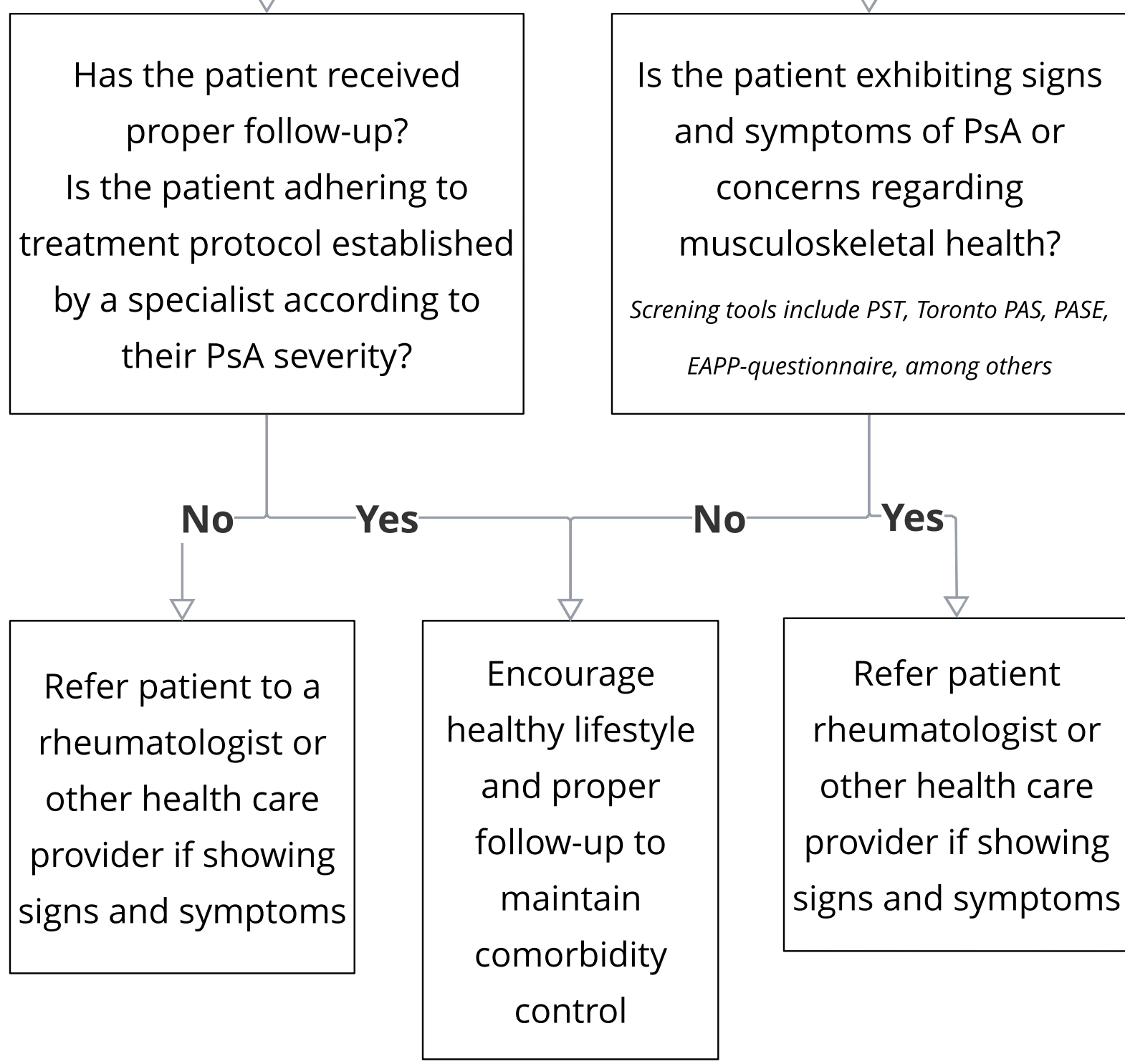
Assess the following comorbid conditions in patients with psoriasis:



## Psoriatic Arthritis

Does the patient have a pre-diagnosis or history of psoriatic arthritis (PsA)?

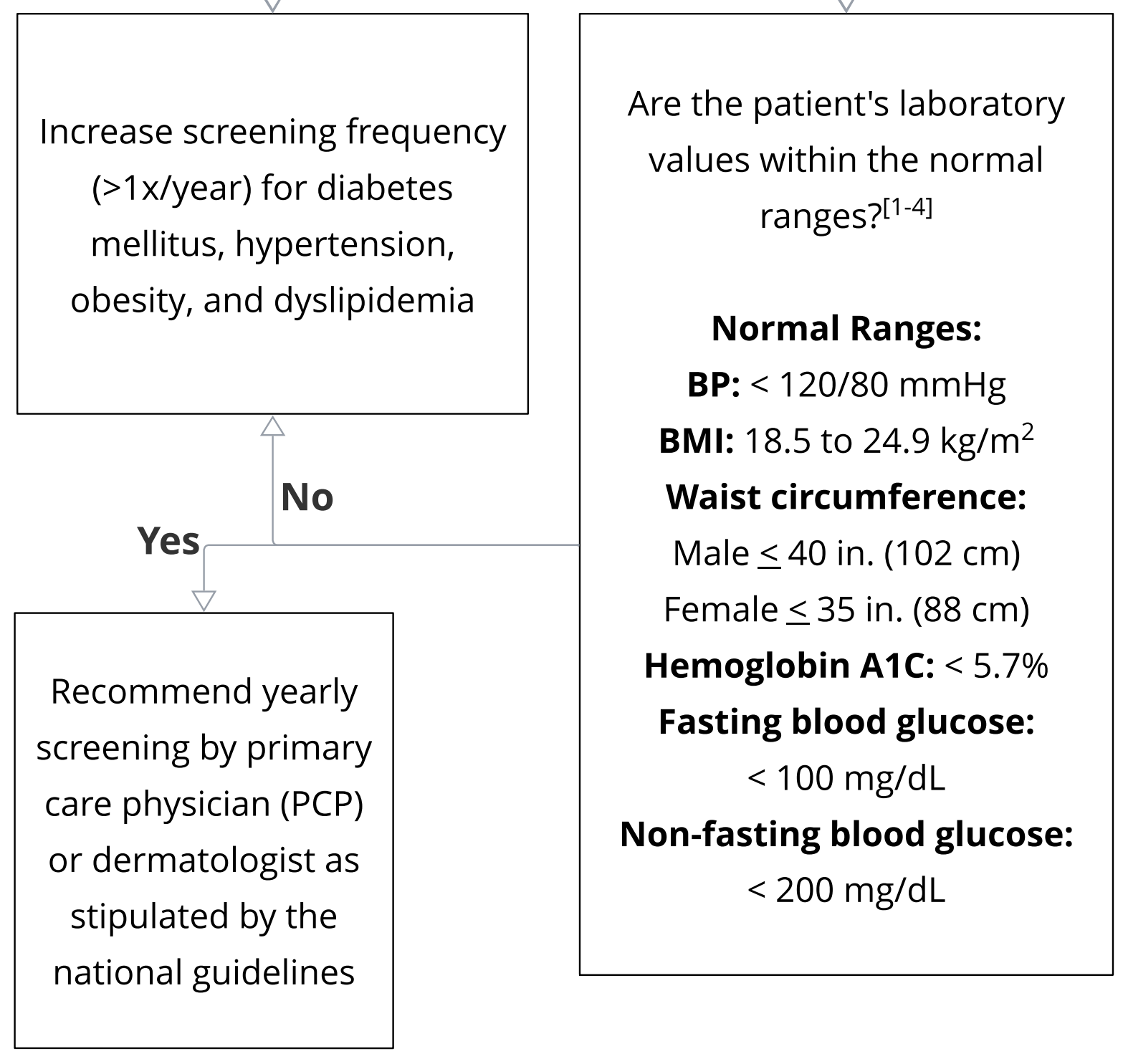
**Yes**      **No**



## Cardiovascular Disease

Does the patient have an established cardiovascular disease (CVD) diagnosis?

**Yes**      **No**



## Metabolic Syndrome

Does the patient have three or more of the following metabolic syndrome symptoms? [3]

- Increased waist circumference:**  
Male > 40 in. (102 cm)  
Female > 35 in. (88cm)  
**BP:** > 130/85 mmHg
- Fasting triglycerides:** > 150 mg/dL
- Fasting HDL cholesterol levels:**  
M < 40 mg/dL  
F < 50 mg/dL
- Fasting glucose:** ≥ 100 mg/mL

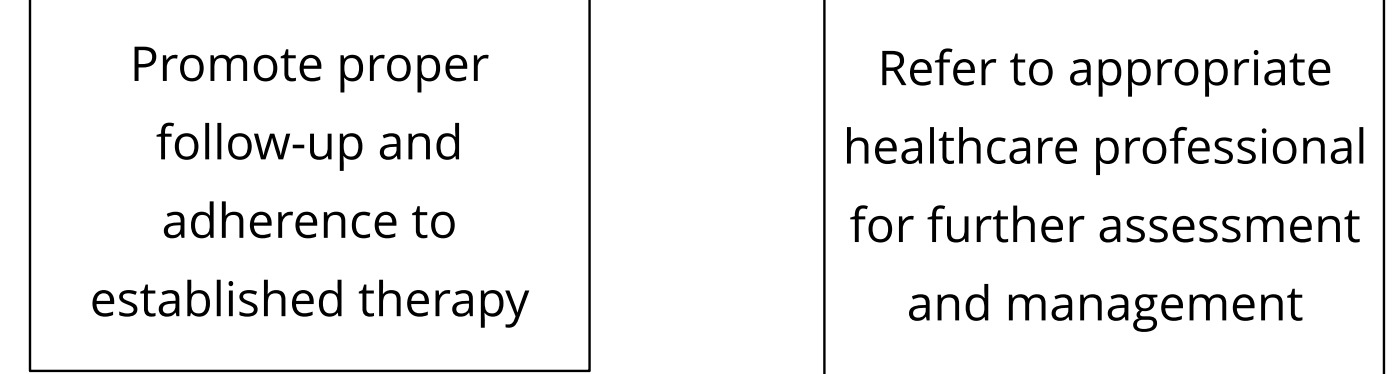
**Yes**      **No**



## Inflammatory Disease

Does the patient have signs or symptoms of inflammatory bowel disease?

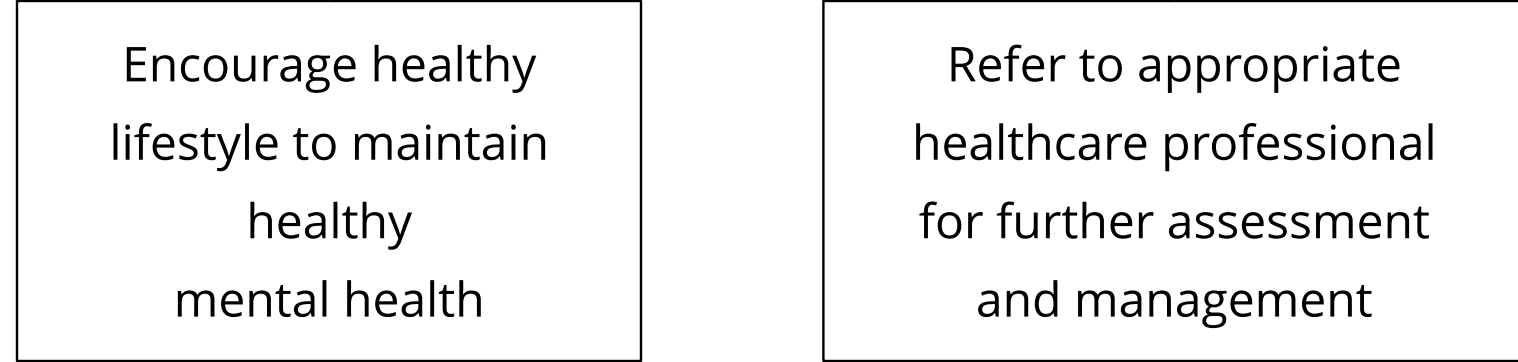
**No**      **Yes**



## Mental Health

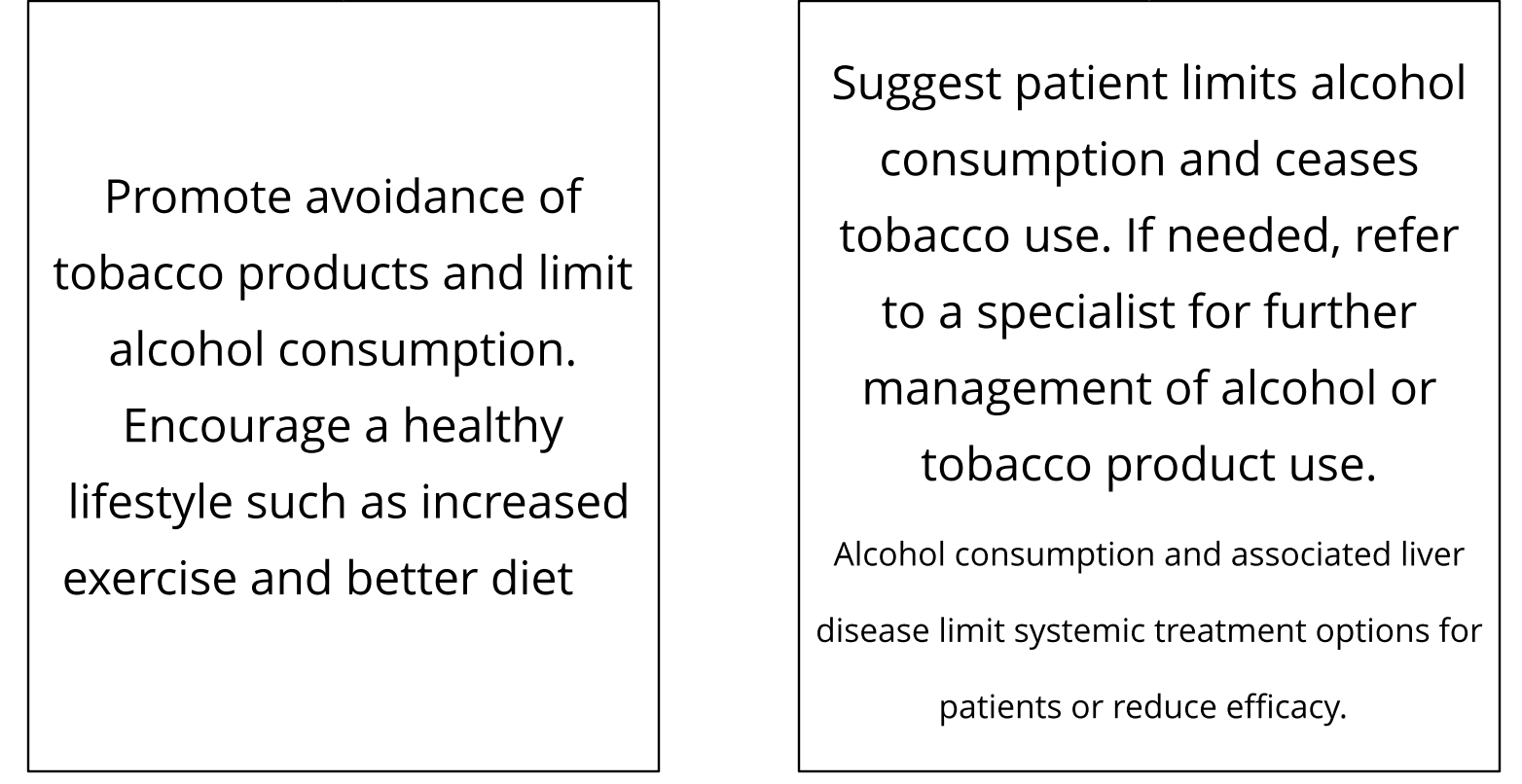
Is the patient showing signs and symptoms of mental health disorders (e.g., anxiety, depression, or suicidal ideation)?

**No**      **Yes**



Does the patient have history or current use of alcohol or tobacco products?

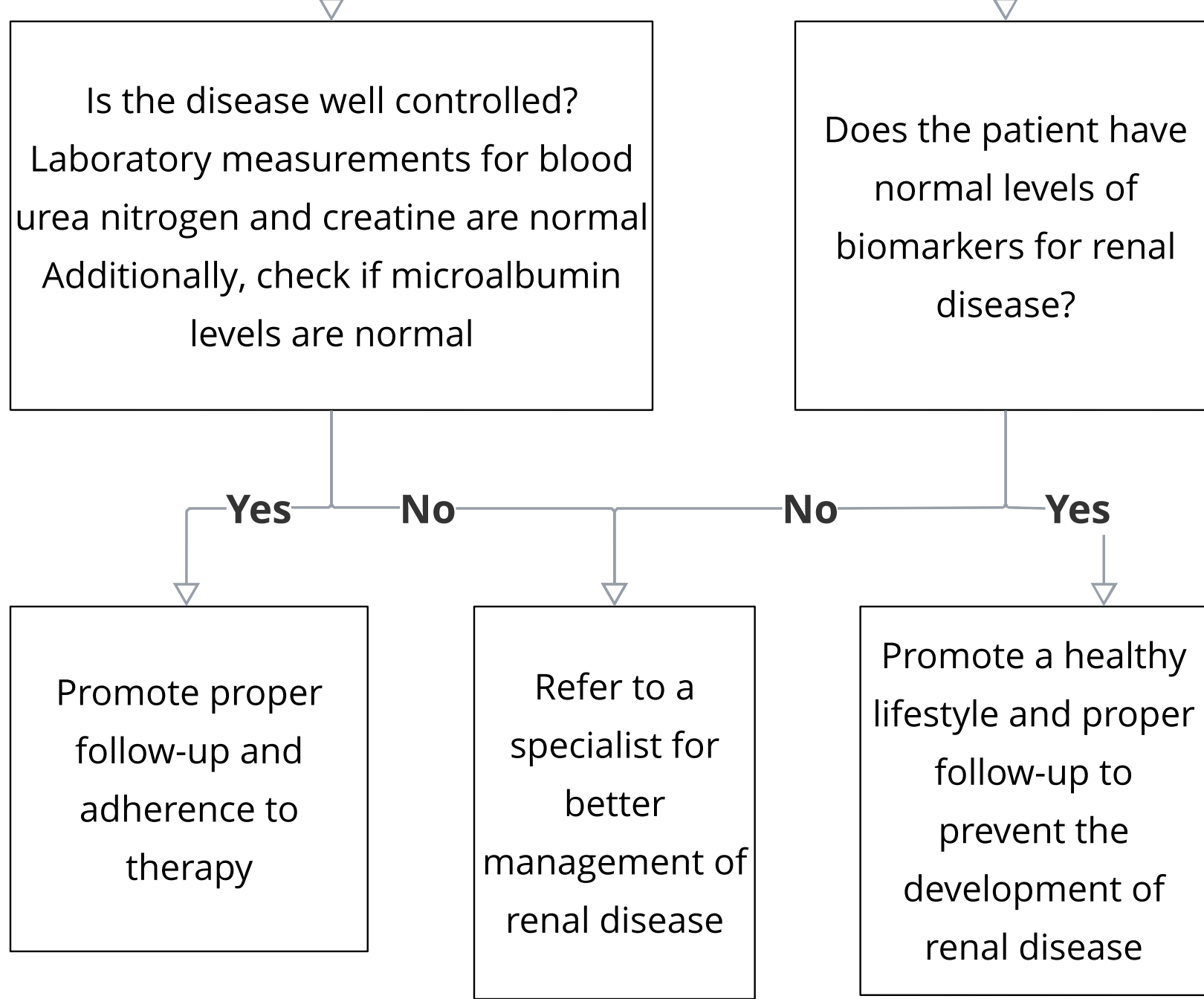
**No**      **Yes**



## Renal Disease

Does the patient have a previous diagnosis or history of renal disease?

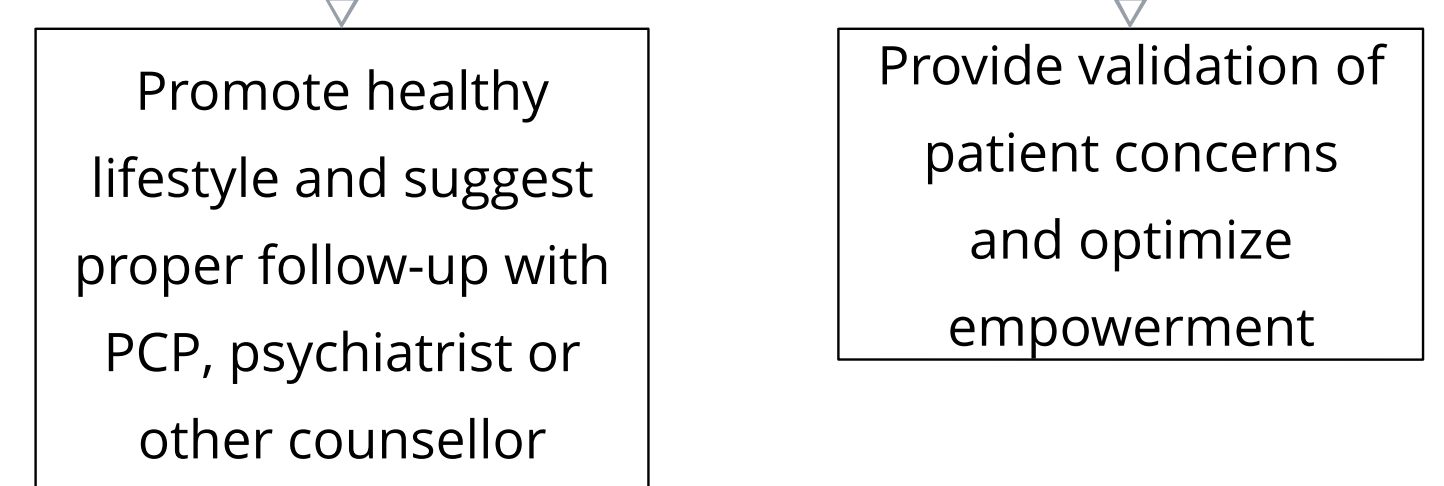
**Yes**      **No**



## Quality of Life

Does the patient have difficulties with interpersonal relationships or work productivity due to psoriasis?

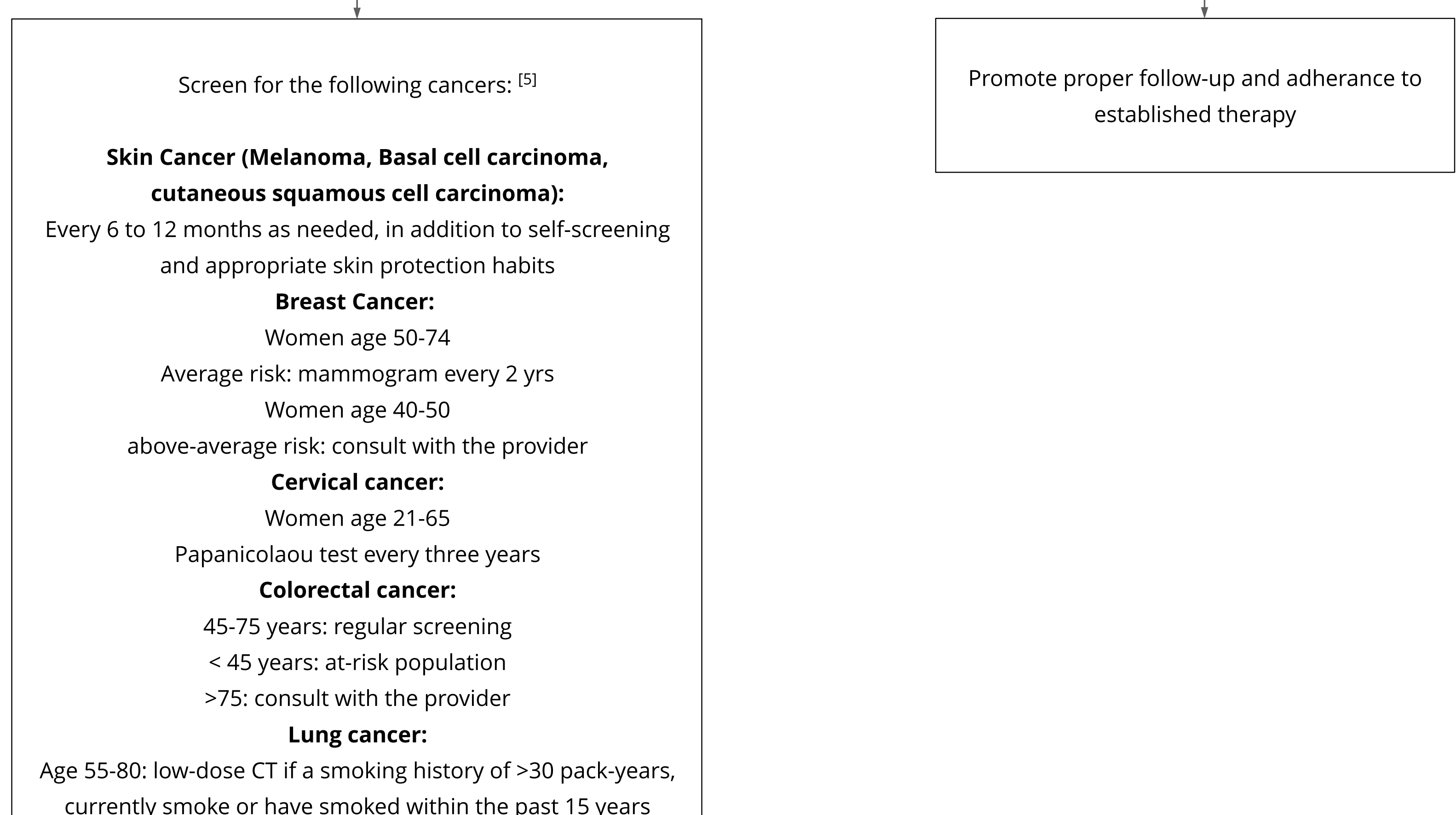
**No**      **Yes**



## Malignancy

Does the patient have a previous diagnosis or a history of malignancy?

**No**      **Yes**



### Abbreviations:

**BP** = Blood Pressure  
**BMI** = Body Mass Index  
**CVD** = Cardiovascular Disease

**EAPP** = Efalizumab-Associated Psoriasis  
**IBD** = Inflammatory Bowel Disease  
**PCP** = Primary Care Physician

**PST** = Psoriasis Screening Tool  
**PsA** = Psoriatic Arthritis  
**PASE** = Psoriatic Arthritis Screen  
**PASE** = Psoriatic Arthritis Screening and Evaluation

### References:

- Siu AL, Force USPST. Screening for high blood pressure in adults: U.S. Preventive Services Task Force recommendation statement. *Ann Intern Med.* 2015;163(10):778-786.
- World Health Organization. Obesity: preventing and managing the global epidemic Report of a WHO Consultation (WHO Technical Report Series 894). 2000.
- Grundy SM, Cleeman JI, Daniels SR, et al. Diagnosis and management of the metabolic syndrome: an American Heart Association/National Heart, Lung, and Blood Institute Scientific Statement. *Circulation.* 2005;112(17):2735-2752.
- American Diabetes Association. Standards of medical care in diabetes—2013. *Diabetes Care.* 2013;36 Suppl 1:S11-66.
- Cancer Prevention and Control. <https://www.cdc.gov/cancer/dccp/prevention/screening.htm>. Accessed. 1/30/2020