

GENELEC® | Smart IP

**Power to the Speaker.
Power to the Integrator.**





GENELEC®

Installed Sound

An outstanding space deserves premium-quality audio – helping to create an attractive experience that visitors truly enjoy. Genelec offers the highest level of adaptable, powerful, accurate and beautifully designed loudspeaker solutions, making it simple to achieve exceptional results.

Genelec loudspeakers have been chosen for some of the world's most prestigious audio-visual installations and experiences, from premium atmospheres in hospitality, restaurants, and hotels, to engaging attractions, museums, and exhibition venues, to retail centres and benchmark corporate workspaces.

Genelec loudspeakers are easy to install and are built to provide decades of reliable service. Aesthetically pleasing and finely crafted recycled aluminium enclosures – with softly curved edges and outstanding mechanical strength – form the core of the Genelec loudspeaker range, complemented by specialised models, providing many possibilities for installation design.

The active design of Genelec loudspeakers means amplifiers, crossover filters and protection circuitry are all integrated into the loudspeaker itself. The electronics and drivers are mutually optimised, reducing the need for external amplifiers and associated cabling.

Genelec Installed premium audio loudspeakers are available globally through a network of professional partners for exquisite audio experiences.

Innovative technology and
certified sustainable production
from the heart of Iisalmi, Finland.



*Project: Jacy'z – Gothenburg, Sweden
Integrator: Informationsteknik AB*

Smart IP – Created for Professionals

The Smart IP range has been developed for discerning professionals who demand premium performance from installed loudspeakers that integrate quickly and seamlessly.

With over four decades as the world's leading provider of professional studio monitoring loudspeakers, Genelec is uniquely placed to offer truthful, detailed, and rich-sounding loudspeaker solutions for audio-visual installations.

Smart IP is a scalable open IP networking technology that delivers audio, power, and loudspeaker management – including configuration, supervision, and calibration tools – all via a single standard CAT cable. This offers system designers, integrators, and installers the flexibility and convenience of networked audio, and time-saving efficiency that will reduce installation man-hours, boosting the bottom line.

Powered by PoE and compatible with both Dante and AES67 IP audio streams, Smart IP is simple and flexible, highly scalable and powerful, yet cost and energy efficient.

The growing family of Smart IP loudspeakers offers a compact, aesthetically beautiful solution, ideal for a wide range of commercial and professional installations, various room sizes, and project scales. With a wide range of colour finishes and extensive range of mounting accessories, loudspeakers can blend in and integrate seamlessly with any environment.

*Project: Arena Sergel, Vasakronan – Stockholm, Sweden
Integrator: Efterklang – JML System AB*





Premium Audio Quality and Balanced Coverage

Excellent control of loudspeaker directivity guarantees exceptionally uniform in-room coverage with clarity and speech intelligibility, making high quality installations possible even in acoustically challenging spaces.

Genelec champions controlled directivity for all installed sound systems. To achieve uniform in room coverage Genelec loudspeakers feature our trademark Minimum Diffraction Enclosure™ and Directivity Control Waveguide™, solutions for highly controlled directivity – providing clean, uncoloured audio across the whole listening area.

Smart IP loudspeakers provide precise, clean sound from a compact enclosure, with consistent acoustic power response, impressive sound capacity, low distortion, and adaptability to different acoustic environments.

Key Technologies



Audio over IP



Power over Ethernet



Smart IP Manager™



Active Crossovers



Directivity Control Waveguide™



Intelligent Signal Sensing™



Minimum Diffraction Enclosure™



Optimised Amplifiers



Protection Circuitry



Optimised Reflex Port



Versatile Mountings

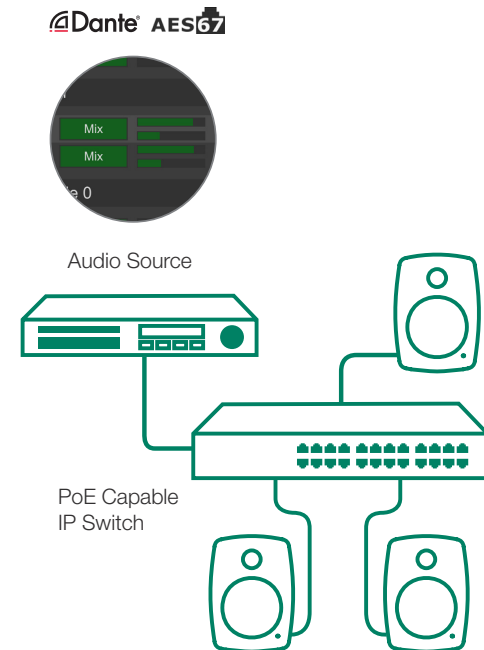
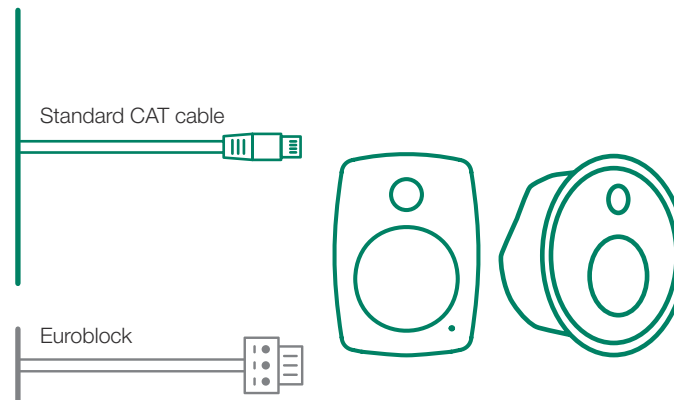
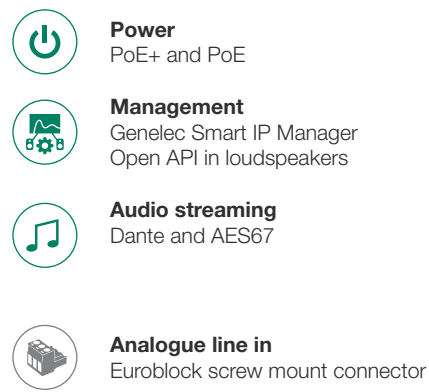
Read more about our Key technologies, visit genelec.com/key-technologies

Complete IP Connectivity

Smart IP single cable connectivity efficiently uses a building's existing IT infrastructure, providing profitability alongside sustainability.

Smart IP supports uncompressed low-latency audio streaming directly into the loudspeakers, providing sub-microsecond level synchronisation of audio output, for supreme acoustic imaging. Smart IP loudspeakers support eight channels of streamed audio using sample rates of 32 to 96 kHz and 16 to 24 bit resolution – all manageable via Dante Controller software.

The loudspeakers receive power, management and audio over IP (AoIP) over a single CAT cable making the installation simple, fast and unintrusive. Smart IP systems are fully compatible with both Dante and AES67 networking, and audio channel routing is easily configured using the Dante Controller software. Most Smart IP loudspeakers also support analogue audio via a standard Euroblock (Phoenix) connector.

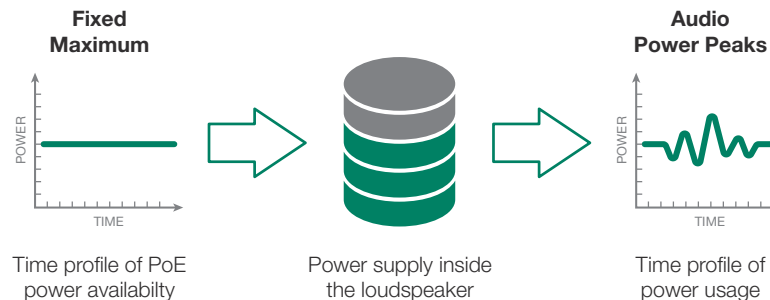


Smart Power Management

PoE+ or PoE

Smart IP utilises Power-over-Ethernet (PoE) technology. Genelec Smart IP loudspeakers are built to deliver very high SPL using standard PoE technology, making it a powerful installation solution. This is achieved through Genelec proprietary internal power management, which stores energy in anticipation of audio peaks. This works because audio signals are dynamic, with continuously varying demand for power.

Smart IP loudspeakers support the widely used PoE+ and PoE technology standards. IEEE 802.3at (30 W) is recommended, with IEEE 802.3af (15 W) the time that peak power output can be maintained is reduced.



Intelligent Signal Sensing

The Genelec ISS™ power management technology helps Smart IP loudspeakers to automatically save energy whenever possible, meeting EU directives and supporting Genetec's sustainability commitments. ISS tracks the signal input. If there is no audio input, ISS will set the loudspeaker to a low-power sleep state. When an audio signal is detected again, the loudspeaker awakens.

Complete Support for Setup

Designed to work closely with Smart IP loudspeaker systems, Genelec Smart IP Manager configuration software eases deployment by enabling installers to configure an almost unlimited number of loudspeakers, rooms, zones and audio channels with simple device discovery and professional tools including versatile room-equalisation, system organisation and status monitoring.

The loudspeakers come with an integrated Application Programming Interface (API) supporting integration to third-party hardware, software and house automation systems. Ready-to-go drivers are downloadable from the Genelec website.



Smart IP Manager
install download



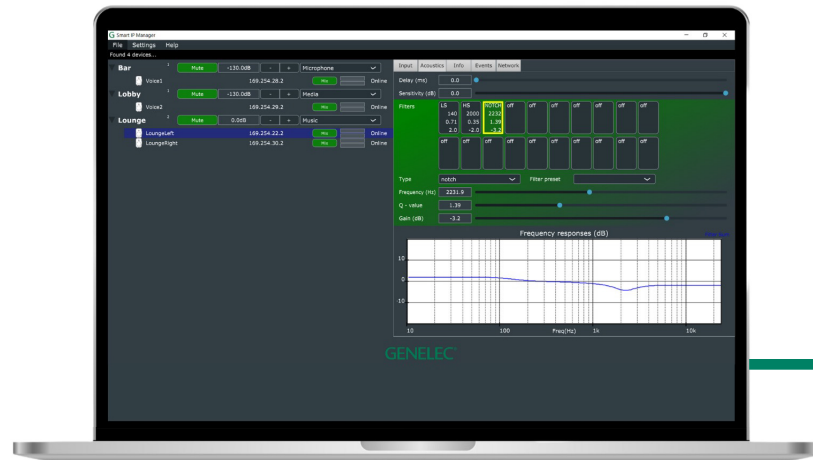
Smart IP Manager
documentation



Smart IP
API documentation



Smart IP
API drivers



Design

While sound quality is of greatest importance, aesthetics and practicality are also hugely important. Since the company's founding in 1978, Genelec has recognised and honoured the value of high-quality design. To this day, internationally renowned Finnish Industrial Designer Harri Koskinen continues a more-than-two-decade collaboration with Genelec, bringing his unique and sophisticated aesthetic to our loudspeakers.

Genelec loudspeakers are built to sound and look exquisite. Functionality, versatility, quality materials and aesthetics are all rooted in Koskinen's designs, resulting in timeless loudspeakers with classical beauty. Genelec's iconic loudspeaker design can be seen in public places throughout the world, representing a signature of the Genelec brand – and providing a statement of investment in exceptional audio quality for engaging atmospheres and experiences.

Installation

With an extensive range of mounting accessories, Genelec loudspeakers can be installed quickly and conveniently in almost any location.



Colour Options

On-wall loudspeaker models are available in standard black or white, plus a selection of 120 RAL colour options. As part of the Genelec's commitment to sustainability, on-wall models are also available in RAW, an attractive unpainted aluminium finish. Most designs also feature paintable grilles and bezels for a discrete appearance when needed.

*Project: Quality Hotel Arlanda XPO – Stockholm, Sweden
Integrator: Informationsteknik AB*



Accessories
catalogue



RAL selection



GENELEC®

Models and Technical Specifications



MODEL	COLOURS	CONNECTIONS	POWER	POWER CONSUMPTION	MAX SPL	FREQUENCY RESPONSE (-6 dB)	DISPERSION ANGLE °	DIMENSIONS/WEIGHT
4410A	Black, white, raw, 120 RAL	RJ45	PoE+, PoE	ISS ≤3 W, Idle ≤4 W, Max 30 W	96 dB	67 Hz – 40 kHz	H 130° V 110°	H 181 x W 121 x D 115 mm / 1.5 kg (H 7 1/8 x W 4 3/4 x D 4 1/2 in / 3.3 lb)
4420A	Black, white, raw, 120 RAL	RJ45, Euroblock	PoE+, PoE	ISS ≤4 W, Idle ≤5 W, Max 25.5 W	100 dB	55 Hz – 39 kHz	H 120° V 100°	H 226 x W 151 x D 142 mm / 3.1 kg (H 8 7/8 x W 6 x D 5 5/8 in / 6.8 lb)
4430A	Black, white, raw, 120 RAL	RJ45, Euroblock	PoE+, PoE	ISS ≤4 W, Idle ≤5 W, Max 25.5 W	104 dB	45 Hz – 39 kHz	H 120° V 100°	H 285 x W 189 x D 178 mm / 5.1 kg (H 11 1/4 x W 7 1/2 x D 7 in / 11.2 lb)
4435A In-Ceiling	Grilles: Black, white, square, round	RJ45, Euroblock	PoE+, PoE	ISS ≤4 W, Idle ≤5 W, Max 25.5 W	104 dB	58 Hz – 39 kHz	H 120° V 100°	Round: Ø 288 x Depth 165 mm / 3.5 kg (Ø 11 3/8 x D 6 1/2 in / 7.7 lb) Square: L 288 x W 288 x D 159 mm / 3.5 kg (L 11 3/8 x W 11 3/8 x D 6 1/4 in / 7.7 lb)
4436A Pendant	Black, white	RJ45, Euroblock	PoE+, PoE	ISS ≤4 W, Idle ≤5 W, Max 25.5 W	104 dB	62 Hz – 39 kHz	H 120° V 100°	Ø 294 x H 237 mm / 5.3 kg (Ø 11 5/8 x H 9 3/8 in / 11.7 lb)



An Environmentally Conscious Choice

With the increasing importance of environmental responsibility, the choice of AV equipment for installation projects should reflect a commitment to sustainability. Reliability and longevity support low cost of ownership.

Genelec installation loudspeakers demonstrate a forward-thinking reduction of environmental impact through product design, manufacturing processes and partnerships. All Genelec loudspeakers are manufactured sustainably in Iisalmi, Finland, following the strictest quality standards. Genelec solutions are designed and built to last, come with unrivalled technical support, product warranty, serviceability and excellent spare part availability.

Genelec integrated power amplifiers are highly efficient, and Smart IP amplifier technology and Intelligent Signal Sensing (ISS™) significantly reduce power consumption and heat generation. Single-cable technology utilises existing IT infrastructure, reducing the cost of cabling and need for additional equipment.

Recycled aluminium enclosures are lovingly crafted from endlessly recyclable scrap aluminium, and they require less energy to manufacture compared to virgin aluminium. Additionally, Genelec's comprehensive Supplier Code of Conduct supports ethical and sustainable operation.

To read more about sustainability at Genelec, visit genelec.com/sustainability

GENELEC®

*Project: Supercell HQ – Helsinki, Finland
Integrator: Audico Systems Oy – Akukon Oy*

Loved by the AV Industry



“The solution needed to remain cost-effective, easily serviceable, easy to install, and sustainable.”

Magnus Westin, Scan AV Kommunikation AB

CECIL COWORKING
Stockholm, Sweden

“Despite the openness of the space, the transitions between the different areas work very well.”

Johan Ahrenfeldt, Moesgaard Museum

MOESGAARD MUSEUM
Århus, Denmark

“We know we can count on rock-solid reliability for years, even decades to come.”

Joakim Leissner, Informationsteknik AB

JACY'Z
Gothenburg, Sweden

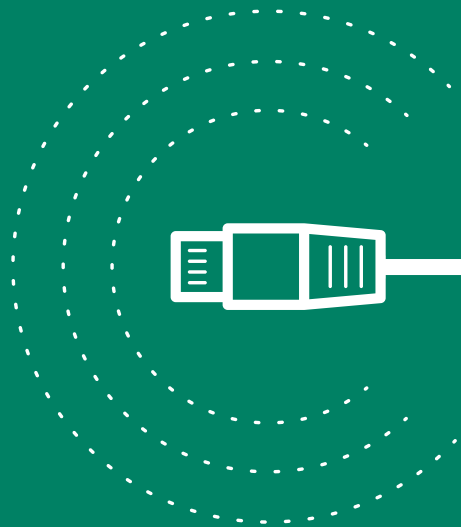
“Genelec is a reliable brand with an excellent track record.”

Richard Northwood, RH Consulting

LORD'S CRICKET GROUND
LONG ROOM
London, United Kingdom



Find more references at [genelec.com/references](https://www.genelec.com/references)



genelec.com

GENELEC®

Detailed Datasheets of all Genelec models, Quick Setup & other useful information can be downloaded at www.genelec.com.
Genelec Document BBAGE205/D Copyright Genelec Oy 01.2024. All data subject to change.