

students
r_build

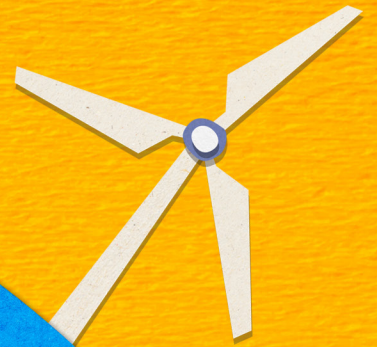


EXTRAORDINARY



PROJECT

Leader Guide



Contents

Welcome from the Students Rebuild Team	3
What is Students Rebuild?.....	4
About the Extraordinary Earth Project.....	5
Who is Receiving Funding?	6
How Do I Get Started?	8
1. Register Your Team	8
2. Check Out Your Dashboard.....	8
3. Choose Your Learning and Support Resources.....	8
4. Connect, Learn, and Make Art.....	9
5. Submit Artwork to Students Rebuild.....	9
6. Share on Social.....	9
7. Keep Making Art	9
During the Challenge	10
Overview of Materials and Teaching Guides.....	10
Connecting with Our Global Community	11
Completing the Challenge	11
Submitting Your Art to Students Rebuild	12
Mailing Your Art to Students Rebuild.....	13
Beyond the Challenge.....	13
Celebrate Your Team’s Efforts.....	13
Raise Awareness.....	15
Continue Serving Kindness.....	15
Give Us Feedback.....	16
Contact Us	16

Welcome from the Students Rebuild Team

Dear Challenge Leader,

Nasha Zemlya. Nuestra Tierra. midirachini. Unsere Erde. Dünyamız. airdna. Wömen dî dîqú.
Our Earth.

The Earth is extraordinary, but climate change affects us all. Environmental changes and degradation threaten our planet and well-being. Its impacts? Intense droughts, storms, heat waves, melting glaciers, rising sea levels, and warming oceans that wreak havoc on our natural resources and communities. But we can take action!

This year, we're inviting students from around the world to join us in learning about our environment, and the things we can do to protect our local and global ecosystems. Our goal is to encourage teachers and students to be thoughtful about how their actions affect both the planet and the ecosystems in their backyard.

We know that young people are doers: they are fueled by doing good and want to make their mark on this world. This year, that means creating art that is sustainable, reusable, and connects students with our beautiful planet.

This guide will introduce you to everything you need to know about the Extraordinary Earth Project. We're excited to take this journey with you and our incredible partners: Choose Love/ Choose Earth, Little Amal, National Wildlife Federation, Eden Reforestation Projects, and the Solgaard Nyx Foundation.

We're all connected; together we can make an extraordinary impact.



Alexandra Manuel
Manager, Students Rebuild

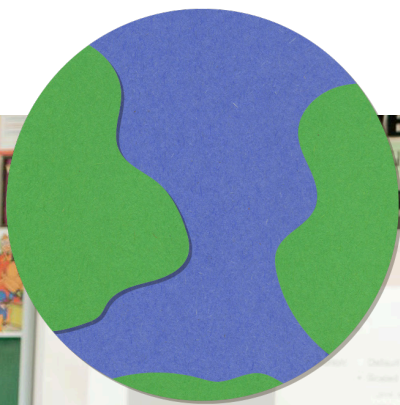
What is Students Rebuild?

Students Rebuild, a program of the **Bezos Family Foundation**, is a free, ready-made adventure in global learning that engages the whole student, and helps change the whole world.

The way it works is simple:

- We issue an annual challenge that invites students to respond to a specific problem affecting young people somewhere in the world.
- Each Students Rebuild Challenge gives K-12 students the opportunity to explore an issue alongside fellow artists from around the globe and create art based on what they learn.
- For every piece of art we receive, the Bezos Family Foundations donates funds to support respected community-based organizations serving youth.

Since 2010, more than one million student artists from 83 countries and all 50 U.S. states have participated in the Challenges. They have created nearly 6 million works of art and raised more than \$11 million dollars to benefit communities all across the globe.



About the Extraordinary Earth Project

This year, we're inviting students from around the world to join us in learning about our environment, and the things we can do to protect our local and global ecosystems. Our changing ecosystems affect us all, and across the world, communities are experiencing it in unique ways. Therefore, our goal is to encourage teachers and students to be thoughtful about how our actions affect the ecosystems in their backyard and our extraordinary Earth.

Protecting our Extraordinary Earth

Take three simple-but-powerful steps to help your students deepen their connection to the environment and our world's ecosystems:

1

Learn about how we can protect our extraordinary Earth through tackling global environmental issues like climate change. We provide the lessons, content guides, and other website resources.

2

Create art with a deep connection to the following environmental themes: repurposing waste, deforestation, clean air and ecosystems.

3

Share your artwork with us. For each piece of art received, the Bezos Family Foundation will make a \$5 donation to organizations tackling environmental issues and the global climate crisis.

**The Students Rebuild Extraordinary Earth Project
kicks off August 17, 2023 and ends June 2024.
You can join the Challenge and submit art anytime
during this period. Get started by registering online
at studentsrebuild.org/earth.**

Who is Receiving Funding?

The money students raise through their art will support multiple organizations and their programs to protect our planet. See a snapshot of the projects below and find a full description of the organizations and projects on our Partner page at studentsrebuild.org/partners.

**CHOOSE
LOVE**



PARTNER:

Choose Love/Choose Earth

PROJECT:

Choose Love supports climate refugees and the communities that need infrastructure after a climate disaster. The organization will re-grant Students Rebuild funds to established local partners directly tackling the climate crisis. Choose Earth is a global movement by Choose Love that aims to inspire people to take action on climate change.



PARTNER:

Little Amal

PROJECT:

Little Amal is a puppet of a 12-foot Syrian refugee child who travels the world to raise awareness about immigration and migration, and supports young people who have been displaced from their homes by numerous humanitarian crises, including the climate change crisis. Funding supports education and impact efforts for young people to learn about the intersections of climate change and migration through the arts and community theater.



PARTNER:

National Wildlife Federation

PROJECT:

The National Wildlife Federation, America's largest and most trusted conservation organization, works across the country to unite Americans from all walks of life in giving wildlife a voice. They've been on the front lines for wildlife since 1936, fighting for the conservation values that are woven into the fabric of our nation's collective heritage.



PARTNER:

Eden Reforestation Projects

PROJECT:

Dedicated to reforestation and environmental conservation efforts around the world, Eden Reforestation Projects recognizes the importance of trees in mitigating climate change, providing habitat for wildlife, improving soil quality and offering livelihood opportunities for local populations.



PARTNER:

The Solgaard Nyx Foundation

PROJECT:

The Solgaard Nyx Foundation works to prevent plastics from ending up in rivers and oceans to restore the ecosystems of Indonesia.

How Do I Get Started?

Everything you need to participate in the Challenge can be found online at:

studentsrebuild.org/earth.

This includes up-to-date information on the Challenge, an interactive map featuring this year's teams and art that's been submitted, educational resources to support student learning, and instructions for making this year's art.



We recommend you bookmark the Challenge webpage on your computer so you can come back to it often.

Here's how to maximize your experience and get started:

1. Register your team

Registration is simple, free and takes less than two minutes. Once registered, your team will be displayed on our interactive map. Teams can be any size—from one person to thousands!

Register your team now.

2. Check out your Dashboard

Registration also unlocks your **Dashboard**, an online feature that lets you track your progress, save materials and lessons for quick reference, upload photos and provides you with a personal link to your shareable Team Page. Your Team Page allows you to share progress, photos, and any materials you choose with students, families and colleagues.

3. Choose your learning and support resources

The Extraordinary Earth Project can be scaled from a single lesson to a full course on global "activism." You can customize your participation to meet your team's needs and time constraints.

To make your journey easy, we've built a few **recommended teaching guides** you can follow based on the time you have. We also have **overview sheets**, **participation certificates** and more to make your Challenge experience personal.

4. Connect, learn, and make art

Using the resources and templates found in the [Extraordinary Earth Project Art Guide](#), have your students make art that fits into your class schedule and teaching requirements.

5. Submit artwork to Students Rebuild

Whichever you choose, the first step is to go to studentsrebuild.org/submit and make sure you're logged in. Once there, you'll be able to enter the number of art pieces and the number of participants from your team. Your donation amount will immediately start calculating and display itself on your private dashboard, the team map, and your shareable Team Page. More details on submission are included in the Completing the Challenge section of this document.

6. Share on social

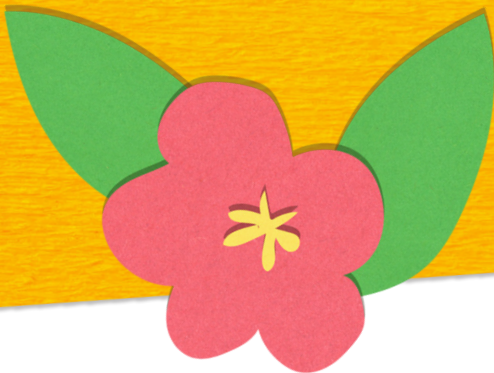
Post your art on your individual or school's social media channels, tagging @studentsrebuild

7. Keep making art

Follow Art Ambassador [@Monsieur_Steve_](#) for additional classroom and art ideas year-round! Your team isn't limited to one piece of art—you can continue to submit art that makes a difference all year long.

Find all of the resources listed here for free at: studentsrebuild.org/resources.

Have you participated
in a Students Rebuild
Challenge in the past?



If so, welcome back! You will need to register your team again for the Extraordinary Earth Project, but if you're using the same email that you registered with in the past, the impact data from your past Challenge participation will still be viewable to you on your personal dashboard. If you uploaded photos or saved resources on your dashboard during the Welcoming Refugees Challenge, you will still be able to access those as well through your Team Page link.

During the Challenge

Throughout the Extraordinary Earth Project, there are numerous engagement opportunities and tools available for you to enhance your team's experience. Use these as they make sense for your team and, as always, feel free to adapt or create your own resources to fit the learning goals of your classroom or program.

Overview of Materials and Teaching Guides

In addition to this Leader Guide, here are the other quick reference tools designed to help you structure your Challenge experience. All of these tools can also be found on our [Resources page](#). These include:

- **Introductory Challenge Video:** A short video that provides inspiration and information about the Extraordinary Earth Project.
- **Art Guide:** Detailed information and instructions on the Extraordinary Earth Project, how to submit your art and a suggested art project to get your team started on the Challenge!
- **Recommended Curricula Resources:** Every year, our team identifies lesson plans and curricula that can be used to deepen learning throughout the Challenge. This year, there are recommended resources from Nature lab, UN Migration, Little Amal, National Wildlife Federation, and more. They can be found within our [Recommended Resources](#) document.



Connecting with Our Global Community

To foster connections and learning across your team, we'll be sharing stories on Facebook, Instagram and Twitter that explore how climate change and environmental issues affect people around the world. We'll also be hosting events with our partners to bring engagement opportunities to your community!

- **Stories:** Read posts from partners on project progress, features on students and teams and updates from the Students Rebuild team.
- **Social Media:** Share your team's photos, videos, and highlights on social media. Tag @studentsrebuild on Facebook, Instagram, or Twitter and use the hashtag #ExtraordinaryEarth so we can see what you share!
- **Newsletters:** Every month we send out a newsletter sharing the latest updates and highlights from the Students Rebuild community. Sharing your team's work with us on social media is a great way to get your team featured! Sign up for our newsletter online or when registering for the Challenge.
- **Events:** This year, Students Rebuild and our partners are hosting events across the world to educate communities on how to tackle global environmental issues and climate change in their own communities. Stay tuned- we will be sharing more information in our newsletters and on social media!

Completing the Challenge

Congratulations, you're almost done! You must submit your art to generate the donation for our partner organizations. It's simple and your art can be submitted two ways: by mail or digital photo submission.

Here are few important things to note while submitting:

- **Have your email address on hand:** You'll need access to the email address you used for registration to verify your email before completing the submission process.
- **Know how many people contributed to your team:** This could be one person or thousands!
- **Know how many individual pieces of art were made:** This will determine the amount donated on your team's behalf.

- **Decide if you'd like to submit digitally by uploading photos or by mailing us a package of your art:** Either option is great, however, all mailed art has the opportunity to be included in our final culmination—we try our best to include at least one piece of art from each physical package received.

Submitting Your Art to Students Rebuild

- **Submission always starts online at studentsrebuild.org/submit:** Whether digitally or by mail, log in on the submission page and follow the instructions on the page to begin the process.
- **You don't need to take an individual photo of each piece of art:** You can only upload 12 photos with each submission, so submit group shots of art, create an art display, or choose another representation of your Team's artwork. If you have more images, you are welcome to upload the rest to your personal gallery—a feature of your Dashboard.
- **Please make sure images are in PNG or JPG format and are less than 10MB each:** Uploading may take up to 3 minutes, so please be patient. Hitting "Upload and Submit" multiple times may cause duplicate submissions.
- **You can submit art multiple times throughout the Challenge:** If your team creates more art—great! Come back to the submission page and add your numbers.
- **If you submit multiple times, all your numbers will be cumulative:** If you're submitting more than once, only add the numbers of **new** art items and **additional** participants that may not have already been counted.
 - **For example**, if the same group of students makes 15 additional pieces of art, on the submission form you would enter # of art pieces: 15 and # of participants: 0.



- **We cannot accept photos with recognizable faces:** If these are submitted we'll need to reject the photo, but your submission will still count.

- Tip: Art held in front of faces is a great blocker!

Mailing Your Art to Students Rebuild

- **After entering your numbers online, you'll be able to select "Mail Art" instead of "Upload Art":** This will generate a mailing slip that will provide both the mailing address and details of your submission.
 - **Unable to print right now?** Write down the provided details on a slip of paper and include it in your package. This enables us to easily identify your package and let you know when we receive it!
- **Your numbers will be counted as soon as you hit "complete submission" online, not when we receive your package:** This means your dashboard display will immediately reflect your impact. When we receive your package, we'll send you a notification email within four weeks.



Do you have other submission related questions? Check our **FAQ section** for answers! If you can't find the answer there, reach out to us at info@studentsrebuild.org.

Beyond the Challenge

You did it! Now what? While you and your students have now finished the Extraordinary Earth Project, check out what's still to come with this year's Challenge!

Celebrate Your Team's Efforts

It's time to celebrate! Your team's hard work helped generate funding to support multiple organizations and make a difference for thousands of communities worldwide. Download and share the **Extraordinary Earth Project participation certificate** to continue the celebration with your team members.

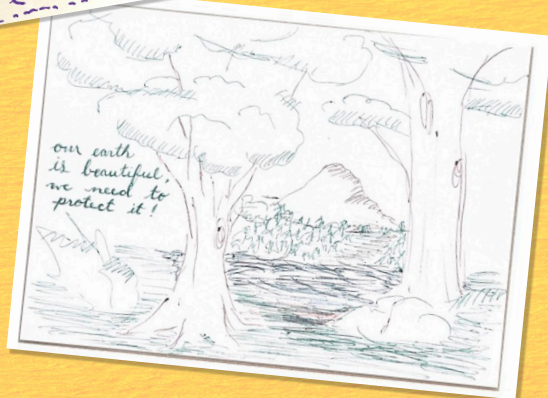
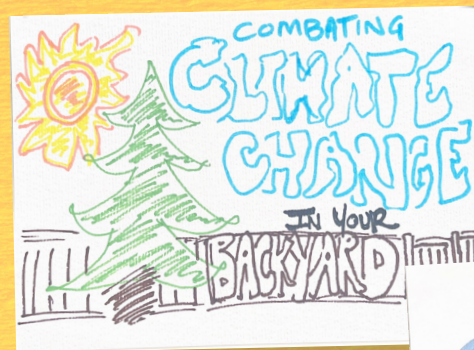
When the Challenge ends, Students Rebuild will work with partners to showcase submitted student art and raise awareness to protect the extraordinary Earth. Check out our website in Fall 2024 for updated information on the culmination.



Share Your Art With Your Community!

As leaders, we encourage you to share your students' art with the local community. In past challenges, educators have displayed created art in local community hubs like libraries, local non-profits, city hall or in schools. Many times, the individual art pieces are brought together in creative ways.

Examples of Activism in Action!



Raise Awareness

Spread the word about the Challenge with your students, their families and the community! **YOU** have single-handedly contributed the most to the growth of Students Rebuild over the last 10 years! Word-of-mouth is consistently the best way that new educators and students learn about the program. Your **Team Page** gives you a personal way to share the Challenge with your students, their families and colleagues. The shareable link to your Team Page can be found on your Dashboard and is accessible after you complete registration.

Consider Hosting an Event, Exhibiting your Artwork, and/or Contacting Local Media

A great way to raise awareness about the Challenge and your team's efforts is by hosting an event or holding a local celebration of your art! Here are a few ideas to get you started: Combine your Challenge participation with a community event to raise awareness about environmental issues and climate change; partner with a local environmental organization and your local city hall for a climate fundraiser, host a recycling drive where members of the community can donate old recyclable materials; organize a climate day street festival where local vendors can sell their food and products and where students can create their own art. What ideas can you add?

Special events and interactive activities will help draw more people to the cause and can even result in media attention. Please let us know about any special events you host so we can highlight them as well!

Continue Serving Kindness

While the Extraordinary Earth Project will end in June 2024, we hope you continue the journey by:

- **Using our learning resources** to dig deeper on how our actions impact our environment, climate and global ecosystems.
- **Thinking about everyday actions**, big and small, that your team can do to help make a difference in your community.
- **Sharing your team's experience and photos** with your local community and with us! Featuring stories of how our Challenges impact students and their communities is one of the things we love most.

Give Us Feedback

After the Challenge ends in June 2024, we'll send all registrants an online survey. Your prompt and honest feedback will help us improve our program to better serve you and our community.

Contact Us

Challenge Hashtag: #ExtraordinaryEarth

On the Web: studentsrebuild.org

 facebook.com/studentsrebuild

 youtube.com/studentsrebuild

 twitter.com/studentsrebuild

 pinterest.com/studentsrebuild

 instagram.com/studentsrebuild

 info@studentsrebuild.org

