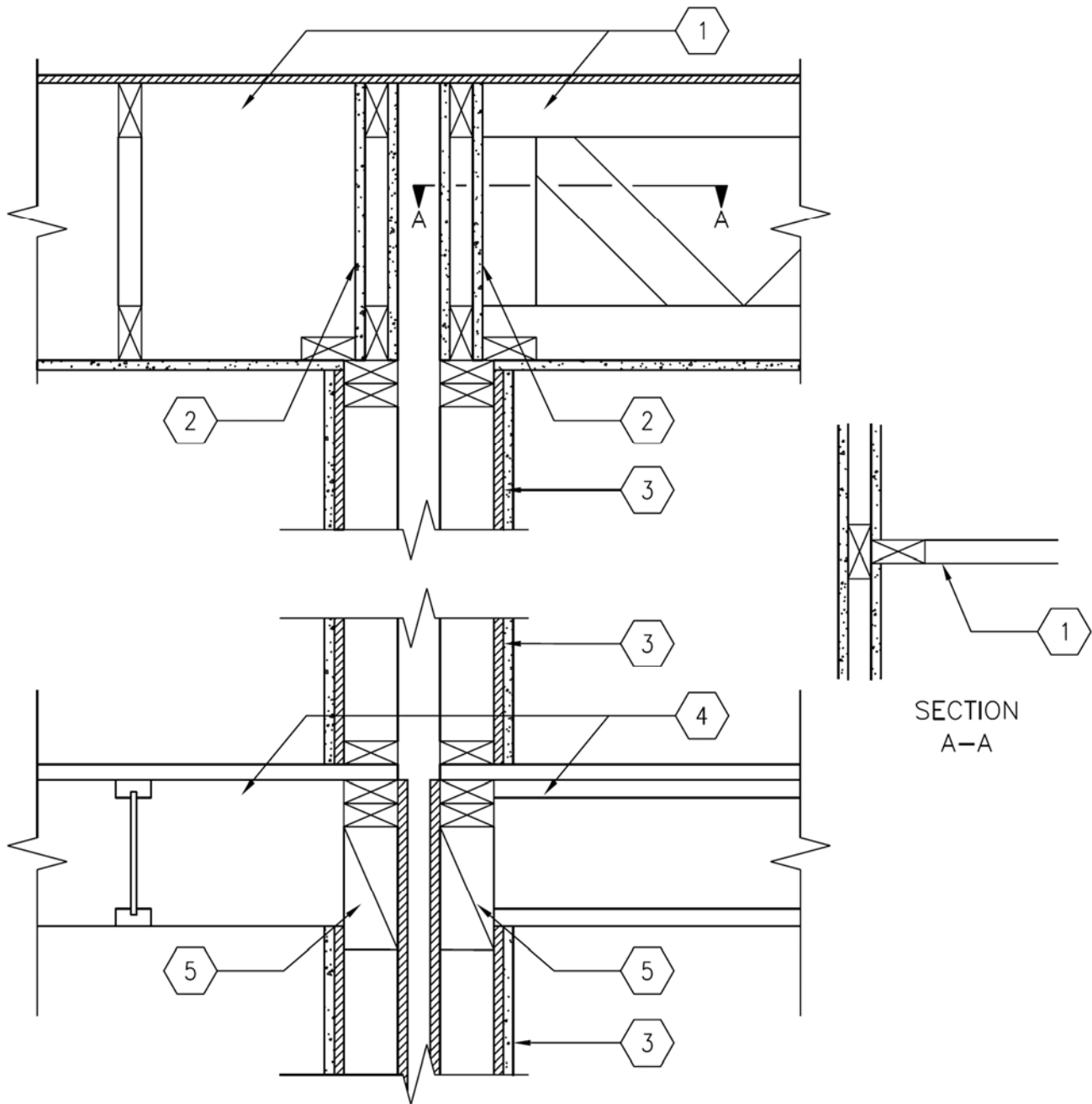


Louisiana-Pacific Corporation
Design No. LPC/RB 120-06
Rim Board
LP® SolidStart® Rim Board
ASTM E119
Rating: 2 Hour





- 1. ROOF/CEILING:** Roof/ceiling assembly constructed with trusses or joists per the project specifications. Trusses or joists can be parallel or perpendicular to the 2 hr fire-resistance rated wall assembly (Item 3).

As illustrated in Section A-A view, a continuous vertical web is allowed at each truss with min. 1 in. overlap for interior gypsum on each side of truss. Gypsum board to be continuous on interior or cut to fit tight between trusses with max. 1/16 in. gap.

- 2. 2-HR FIRE RATED CONTINUITY TO ROOF DECK:** Maintain the 2 hr fire-resistance rated separation by installing a truss or joist parallel with the 2 hr fire-resistance rated wall on each of the two top plates. For non-load bearing truss or joist apply 1 layer (continuous) of 5/8 in. thick Type X gypsum board on each side of the truss or joist (shown) using 1-7/8 in. long, 8d cement coated nails spaced 8 in. on center (oc). For load bearing truss or joist, apply 2 layers (continuous) of 5/8 in. thick Type X gypsum board on each side of the truss or joist (not shown) using 1-7/8 in. long, 8d cement coated nails spaced 12 in. oc for the first layer and 2-3/8 in. long, 8d cement coated nails spaced 8 in. oc for the second (outer) layer. Joint treatment not required at square edges.
- 3. WALL ASSEMBLY:** Intertek Design No. BTC/WPPS 120-2 or UL Design No. U350 Configuration A (shown) and Configuration B, 2 hr fire-resistance rated wall assembly, continuous from floor to ceiling. Refer to wall assembly design for full specifications of

assembly. The wall assembly may be constructed in either Configuration A or B.

- (Not shown) Uses a base layer of LP® FlameBlock® or Blazeguard® (both one-sided) with the laminated side oriented towards the wall assembly framing, followed by a face layer of 5/8 in. thick Type X gypsum.
- (Shown) Uses 1 layer of 5/8 in. thick Type X gypsum board on the occupied side of the wall assembly. Uses 1 layer of LP® FlameBlock® or Blazeguard® (both one-sided) on the unoccupied side of the wall assembly with the laminated side oriented towards the wall assembly framing. In this configuration the LP® FlameBlock® or Blazeguard® sheathing shall be continuous up to the bottom plate of the floor above.

- 4. FLOOR/CEILING ASSEMBLY:** Floor/ceiling assembly constructed with trusses or joists per the project specifications. Trusses or joists can be parallel or perpendicular to the 2 hr fire-resistance rated wall assembly (Item 3). For parallel framing, provide intermediate blocking at max. 4 ft. oc.
- 5. BLOCKING:** Use continuous nominal 4 in. thick blocking below top plates that laps with interior gypsum panel a min. of 1-1/2 in. Note: The blocking shall provide a continuous wood layer, that is the same nominal 4 in. thickness as the stud framing and plates, to maintain continuity of the 2 hr fire-resistance rating through the floor/ceiling assembly.

Consult the listing report on the Directory of Building Products (<https://bpdirectory.intertek.com>) for the edition of the standard(s) evaluated.