

Before you get started

Make sure you read through all of the instructions so that you can access the router. When this device is switched on, it should be kept at least 20 cm from the body.

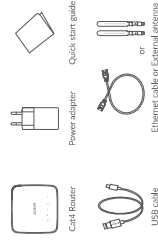
Where to put your router

To get the best signal, the ideal place for your device will be near a window. Try a few different areas until you find the one with the best signal.

Concrete or wooden walls can weaken the transmission of wireless signals. Other factors that can affect the signal include:

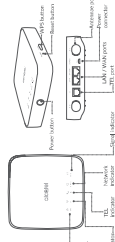
- Microwave ovens, refrigerators, and satellite antennas can negatively affect your signal. Place your router away from such appliances.

What's in the box:



- Only use the listed approved power adapter indicated with this router.
- Unapproved charger can be dangerous and may damage the device.

Getting to know your device:



Power button

- Once connected to a power outlet, your C410 Router will automatically power on.
- To power off your device, press and hold the power button for 3 seconds.

WPS button

LED will start to flash blue. This means that the WPS button for 3 seconds. The WPS LED will start to flash blue. This means that the WPS button will be active for you.

Reset button

With to connect to within two minutes. Your C410 Router will automatically assign your network settings to the device you wish to connect to.

To reset the router, press and hold the reset button for 3 seconds, all LEDs will turn on, then off, and finally turn on again once the reset is completed. You can also reset the device via the Web-UI (refer to the C410 Router User Manual).

LED description

Item	Description
	<ul style="list-style-type: none"> • Solid Blue: The device is powered on. • Off: The device is powered off.
	<ul style="list-style-type: none"> • Solid Blue: W-Fi is enabled. • Flashing blue: WPS connection is available.
	<ul style="list-style-type: none"> • Flashing blue: Phone is ringing. • Solid Blue: Phone is on a call.
	<ul style="list-style-type: none"> • Off: Phone is not in use.

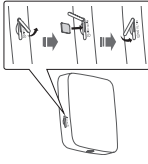
Getting started with your device:

Insert SIM

Follow the 3 steps in the illustration below.

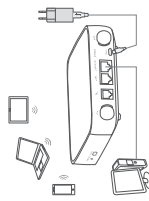
- 1 Open the SIM card slot cover.
- 2 Insert the SIM card into the slot.
- 3 Close the SIM card slot cover.

Do not remove the SIM when your C410 Router is in use. Doing so will affect the performance of your device, and data stored on the SIM may be lost.



Connect the power adapter

Follow the illustration below to plug in the power adapter. Once connected to a power outlet, your C410 Router will automatically power on.



To prevent interference caused by radio signals, place the C410 Router at least one meter away from phones and other electrical devices.

Optional: Installing the external antenna

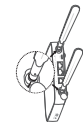
In case with poor signal reception, connect external antenna to the two ports labeled LTE to improve signal reception.

Warning: When installing the external antenna system, shut your Cat4 Router is powered off and disconnected from the power cable. The external antenna must be installed by a qualified technician. Use antennas supplied by device manufacturer only.

① Power off your Cat4 Router and disconnect it from the power outlet.



② Screw external antenna ball into the antenna ports.



③ Open the LTE covers on both sides.



④ Keep external antenna away from obstacles to get a better signal.



Connect your device to the network

• Wi-Fi

To make a wireless network connection, follow the steps below.

- 1) To make sure Wi-Fi is enabled, check to see if the Wi-Fi LED on your device is blue. (Refer to the section: **Getting to know your device**)
- 2) Turn on Wi-Fi on the device you wish to connect. For help refer to your laptop / device manual.

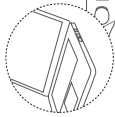
③ Search for the Wireless Network name on your laptop / device. The network name or SSID can be found on the label on the back of the device, along with your security / Wi-Fi key.



④ Click connect and enter the security / Wi-Fi key. You'll now be connected with your Cat4 Router.

• Ethernet cable

Connect one end of the Ethernet cable into either of these two LAN ports. The other end simply plugs into your device (i.e. Laptop or PC). Up to two devices can be connected using the LAN ports.



How to change the Wi-Fi Key

- 1) Power on your Cat4 Router.
- 2) Click Log in and enter the password. The WEB UI and LINK app share the same password. Default password is: admin. The password will be forced to change the default password for additional security.
- 3) Go to Settings > Wi-Fi - Basic to change the Wi-Fi Key.

Safety reminder

- During thunderstorms, turn off the device and remove all cables.
- Do not use an external antenna or a power adapter that is not a genuine product of the manufacturer. Use of non-genuine external antenna or power adapter may result in fire or damage to the external antenna or power adapter. Outdoor antennas must be installed by a qualified technician.
- The modem and SIM card are not compatible with any other device.

Moving to a new home?

For more information, you can move with you, just make sure there's coverage in your new location.

LINKHUB
LTE Home Station

Quick Start Guide



alcatel