

Krzyzewskiville

at Duke University

Official Policy
2018-2019

Table of Contents

Introduction

Foreword	5
General Rules and Etiquette	6

Walk-Up Line

Standard Walk-Up Line Policy	14
Big Game Walk-Up Line Policy	20

Other Games

Countdown to Craziness	22
The Parents' Weekend Game	23
Break Games	24

Carolina Game

General Tenting Policy	26
Black Tenting	31
Blue Tenting	33
White Tenting	34
Flex Tenting	36
Personal Checks	37

Wellness

Tenting Wellness Policy	40
Gameday Wellness Policy	40
Wellness Contract	41

1 Introduction

Foreword

As Coach Mike Krzyzewski would put it, the greatest thing about the phenomena surrounding Krzyzewskiville and Duke basketball is its ever-changing nature.

K-Ville is alive, and it is constantly growing and changing in new ways. Remove all of the students adorned in blue and the television cameras, however, and it remains a cornerstone of our university's social culture.

Krzyzewskiville is about more than a simple game of basketball. It's about more than getting on television. It's about coming together as a student body to face adversity and find common ground.

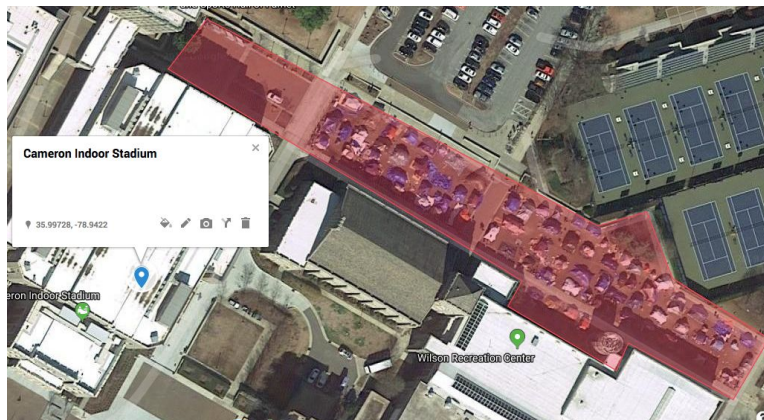
As Krzyzewskiville has grown, so have the rules surrounding it. The Line Monitors publish this policy to give an understanding not only of our policies and procedures, but the historical context of why our tent city runs in the way that it does. To stay up to date with everyday Krzyzewskiville happenings, join the Facebook group "[K-Ville Nation](#)", Twitter [@KVille_Nation](#), and Instagram [@KVille_Official](#).

In the event of a difference between the Long and Short policies, the Long policy prevails.

General Rules and Etiquette

City Limits

Krzyzewskiville is formally defined as the grassy lawn area in front of Card and Wilson gyms, their surrounding sidewalks, and the plaza in front of Cameron and the Schwartz-Butters Building.



When Flex Tenting is in effect, Krzyzewskiville may be expanded (at the discretion of the Head Line Monitors).

Note that this does not include the IM Gym, the Sheffield Tennis Center, the Ambler Tennis Center, the interior of Card and Wilson gyms, or any part of Towerview Road or the Card parking lot.

Students who are on duty for their tent or walk-up line group should remain within these boundaries at all times unless given specific permission from a Line Monitor.

Tenters and walk-up line students who are not within the city limits **at the moment when a check is called** will miss the check.

Personal Items

Students are responsible for all personal items left in K-Ville. Duke University Athletics, Grounds, and the Line Monitors will not be held liable for any items lost or stolen.

Please be aware that bags, including purses, backpacks, and umbrellas, are not allowed in Cameron Indoor Stadium. In addition, no outside food or drink is allowed in Cameron. Please plan accordingly.

Trash

Students are responsible for the removal of all items brought into K-Ville. Please make use of the many garbage receptacles and recycling bins. Please ensure that larger items such as furniture are not left behind.

K-Ville may be cleaned at any point from 90 minutes prior to tip off until the day following the game. **Please make sure any personal items or items you would like to keep are on your person or removed from K-Ville** prior to this time. Items near trash and recycling bins will be thrown away.

Note that the cleaning process may take place earlier on the day of the Carolina game.

Constructing a Tent

All tenters must refrain from tying anything—including tents—to trees, lampposts, handrails, or other structures.

All tents frames and materials (including tarps) must be store-bought and flame retardant. All structures are subject to fire marshall approval.

Tarps that are draped over tents may not be tucked underneath tents/pallets.

When placing stakes into the ground, please be aware of and avoid irrigation lines that run beneath the grass. Irrigation lines will be marked in a grid-like fashion with color flags at the heads.

As a general rule of thumb, no stakes should be placed within a one-foot radius of any flag.

Portable electric power generators of any kind are not permitted in K-Ville.

At no time may any resident pitch a tent on or covering any part of the sidewalk surrounding K-Ville. Groups in the Walk-Up Line for any game should keep in mind that the sidewalk in front of Card and Wilson Gyms will be used throughout the day.

Body Painting

Body painting should be confined to soft surfaces such as grass if possible. Students

should refrain from painting in the Wilson or IM bathrooms.

Restrooms

If you must use the restroom, please use the portable toilets in K-Ville.

If no portable toilets are available, there are restrooms in the IM Gym for convenience. Please note that the IM Gym should be used for restrooms only. Any student found loitering in the IM Gym will miss a check for their tent.

Using the bushes or any other part of the K-Ville grounds is against University policy.

Weather

Head Line Monitors will refer to the Administration and their weather source for weather estimations. The following guidelines will be used when determining if students should leave K-Ville:

- Temperatures at or below 25°F according to Weather.com
- Greater than 2” of accumulated snow
- Sustained winds higher than 35 mph
- Lightning within a six-mile radius
- Severe weather warnings
- Icy conditions
- School closure

Accessible Seating

A limited number of accessible seats are available in Cameron Indoor Stadium.

All special accommodations for accessible seating for Duke University students must be made in advance of game day by contacting the Duke Disability Management Office at 919-668-6213.

Special accommodations will be filled on a first-come, first-serve basis prior to game day. No special accommodations or tickets exchanges will be allowed on game day.

Reservation for accessible seating for students will end by 4:00 PM three (3) days prior to game day. Reservations for the Carolina game may operate under a different timeline according to the specific process established by the Duke Disability Management Office.

Alcohol

Students in K-Ville are expected to adhere to **all university policies** relating to the consumption and distribution of alcohol. This includes compliance with the university's policy prohibiting drinking games. Please refrain from bringing alcohol into the Wilson and IM Gym facilities. As a reminder, **glass containers and hard alcohol are not allowed**. In order to prevent drinking games, **tables, besides those provided by the Athletic Department or approved at the discretion of the Head Line Monitor, will not be permitted**.

Removal from Cameron Indoor

Though it is rare that someone will be removed from the student section in Cameron Indoor Stadium, the following are grounds for removal:

- Entering the stadium with false credentials.
This includes, but is not limited to:
 - Using a fake DukeCard
 - Using an unofficial wristband
 - Pretending to be another Duke student
 - Pretending to be a Line Monitor
 - Pretending to be a member of Duke Athletics staff
 - Pretending to be a member of the media

- Showing signs of excessive intoxication.
This includes, but is not limited to:
 - Excessive stumbling
 - Inability to stand unsupported
 - Vomiting in the student section
 - Urinating in the student section
 - Acting in a belligerent manner

- Wearing apparel of the opponent's team in Section 17.
- Refusing to comply with the instructions of the Line Monitors, Duke Athletics staff, Staff One, or Duke Police.
- Failure to comply with the general policies listed in the Cameron Indoor Stadium A-Z Guide.

- Sneaking past the Line Monitors, Staff One, and other security measures without presenting a DukeCard
- Any behavior that could be deemed unsafe or threatening by a Line Monitor, Event Staff, or Athletics personnel.

Use of Krzyzewskiville by Student Groups

Student groups that would like to use K-Ville for any non-basketball purpose—fundraising, publicity, and so forth—may not interfere with Game Day operations and must operate in accordance with all relevant University policies. Student groups who do not do so may be asked to leave.

In the interest of fairness, the Line Monitors will not actively support or sponsor any other student organizations.

2 Walk-Up Line

Standard Walk-Up Line Policy

Unlike other universities that use a random lottery or ticket sales to determine which students are admitted to a sporting event, Krzyzewskiville is proud of its first-come, first-served approach.

The basic idea is simple: students who wish to attend a game need only wait their turn in line. In balancing academics and extracurricular activities with basketball, however, two mechanisms are needed.

First, a **grouping** mechanism is necessary to allow students to rotate out and take part in other activities during the day. Also, a **line checking** mechanism is needed to keep the process fair and ensure that students are holding their place in line.

This policy applies to all games except the Carolina game and games occurring over breaks in the academic calendar.

Grouping

Students should line up in groups. **Only one-third of a group must be present in K-Ville at any particular time**, allowing group members to rotate out and attend class, study, or participate in other extracurricular activities. You must have one-third of your group in K-Ville to register your group.

Once a group has been added to the list, the size of the group is capped at three times the number of students present at the time of registration.

Students may choose to **decrease the size of their group** by going to the registration tent, but **may never increase the group size**. Changes in group size may not occur during line checks.

Groups that are not of a size divisible by three should round up to the nearest multiple to calculate the number of members required in K-Ville.

***Example:** A group of 13 members would round up to 15. Dividing by three yields five, which is the number of members needed in K-Ville at any particular time.*

To register a group in line, students should locate the Line Monitor on duty at the registration tent (located near the Krzyzewskiville sign on the parking lot side of K-Ville) and ask to register a group. The registration tent will be clearly visible. Each student must present a DukeCard to register.

If the registration tent has not yet been set up or if there is no Line Monitor present, please locate the line in the corner of K-Ville closest to Cameron Indoor (on the sidewalk in front of Wilson Gym) and wait there. If no Line Monitors are present and you would like to check in, please fill out the Google form designated to contact the Line Monitors and inform them of your presence in K-Ville

Line Checks

To preserve the integrity of the line, Line Monitors will occasionally conduct a line check to ensure that each group has the required number of people representing it.

A Line Check will be signaled with the sounding of a bullhorn siren. During tenting season, Line Monitors will notify students whether the check is for the walk-up line or tents. Please note that we will only check walk-up line and tent groups at the same time in the event of a weather announcement or emergency.

There is no grace given for walk-up line students regardless of your status as a tenter or non-tenter. Tenting grace does not excuse a student from their walk-up line responsibilities.

For home Women's Basketball games, Cameron Indoor Stadium will be included as K-Ville, so that tenters and walk-up line students can attend.

Missing a Line Check

In order to make a line check, groups must be present within the defined boundaries of K-Ville at the start of the check and check in with a Line Monitor during the duration of the check.

Checking in entails each present group member presenting their Duke Card to a Line Monitor. If the group fails to complete this, the check will be counted as a missed check for that group.

Missing a line check for any reason will result in a group being bumped from the line. **Groups that have been bumped will have to re-register.**

If you feel a miss has been assigned in error, please contact the Head Line Monitors at headlinemonitor@gmail.com to discuss your circumstances.

Wristbanding

To allow staff and Line Monitors to quickly identify students, a paper wristband is required in addition to a DukeCard to enter Cameron Indoor Stadium.

Line Monitors will distribute wristbands on game day. Groups that register prior to game day should receive a wristband from a Line Monitor at some point during the day. Groups that register on game day should receive wristbands at the moment they register.

Students who are in a registered group but have not yet received a wristband should obtain one at the registration tent when they arrive to K-Ville on game day.

Closing the List and Assembly

Thirty minutes before the undergraduate doors open (2 hours before tip), the Line Monitors will close the walk-up line list for registration. At this time, no new groups will be allowed to register.

Students who arrive after this time and are not on the list may still enter the game; these

students should present their DukeCard to a Line Monitor, obtain a wristband, and then join the back of the line as it is assembled in K-Ville.

Line Monitors will assemble the line on the sidewalk closer to Wilson Gym in group order thirty minutes before undergraduate doors open.

Entry

Undergraduate doors to Cameron Indoor open one and one-half hours before tip-off (two hours for the Carolina Game and one hour before Countdown to Craziness). Students will be admitted to Cameron in group order at that time. Students should have their DukeCard and wristband ready and visible to ensure fast admission.

Line Monitors will be stationed at the head of the sidewalk and will control the flow of students into Cameron. Please be courteous of the event staff and other students and do not run into Cameron.

Students who arrive late to K-Ville and failed to enter Cameron with their group should join the back of the line. Unfortunately, we cannot make exceptions to this rule.

Please be aware that all groups must pass through the metal detectors located outside the student doors to Cameron Indoor in order to gain entry.

Once in Section 17, please be mindful of students who have yet to be admitted and squish close to your fellow Crazies. This will allow the

maximum number of students to be admitted to each game.

Also, please be mindful of the size of any game day costumes or outfits and their potential impact on attendance – Line Monitors may require that attire deemed inappropriate or in conflict with the game day experience of others be removed.

Theme Nights

For certain games, Line Monitors will announce a Theme Night. A Theme Night will allow members of a particular group—particular class years, for example—priority admission into Cameron Indoor.

In this case, the first 200 students in the Walk-Up Line will be allowed to enter **before** all members in the theme night group. More specifically, the entire group containing the 200th person in line will be allowed to enter.

Once all students in the theme night group have entered, admission will continue from the standard walk-up line as normal.

Wristbands for the theme night group will be a different color and can be obtained at the registration table.

Big Game Walk-Up Line Policy

Certain walk-up line games are in higher demand due to the nature of the opponent. These games are typically against more traditional conference rivals, such as North Carolina State or Virginia, or Top 25 opponents.

The Line Monitors will designate which games are Big Games in advance after consultation with University officials. Line Monitors will determine Big Game designation at least one week in advance, and will post this information on kvillanation.com and all forms of social media.

Big Game walk-up line policy differs from standard walk-up line policy in one way: the use of tents is allowed owing to the anticipation of longer wait times.

Group sizing, representation requirements for each group, and all other policies and procedures given in the standard walk-up line policy still apply.

The use of tents for Big Games in no way relates to tenting for the Carolina game. A group's position in the line for Carolina does not dictate position in line for any other game or vice versa.

Line-up for checks and prior to the game will still occur in group order on the sidewalk alongside Card and Wilson Gyms.

3 Other Games

Countdown to Craziness

Countdown to Craziness is the annual preseason event celebrating Duke basketball.

Countdown usually consists of a blue-white scrimmage, a slam dunk contest, the annual team poster reveal, and all-day events in K-Ville.

The standard walk-up line policy is in effect for Countdown to Craziness unless Countdown falls on Parent's Weekend. In this situation, the Parent's Weekend Game Policy applies.

The Parents' Weekend Game

Parents' and Family Weekend, usually occurring in the final week of October, typically coincides with the first exhibition game of the season.

Students will have the opportunity to purchase up to two additional tickets to allow family or friends to accompany them into Section 17.

Students who choose to wait out at night for tickets to the Parents' Weekend Game must adhere to a special policy: no grouping is allowed.

To acquire tickets, students should form a line on the sidewalk of K-Ville closer to Wilson and Card Gyms. Line Monitors will be present to maintain the integrity of the line.

All students may receive one ticket for free upon presentation of their DukeCard and have the option of purchasing up to two additional tickets for \$20 each. **Please note that only cash and check are accepted.**

Unlike other games, those students with tickets must present their physical ticket to gain entry instead of their DukeCard. Additional space in Cameron will be filled according to Standard Walk Up Line policy. These students will only need to present a Duke Card.

Break Games

Several games will occur over the Thanksgiving and Winter Breaks according to the Duke academic calendar.

Because the vast majority of students are away on break, there is no walk-up line policy for these games.

Students who wish to attend these games need only arrive at any time they like and bring a DukeCard.

Duke Athletics makes tickets in the student section available for the general public for these games. Student doors typically open one and a half hours prior to tip-off, whereas general admission doors open an hour before tip-off.

Please be sure to arrive early to secure a reserved student seat in the middle of Section 17. General Admission ticket holders will be allowed to enter the space reserved for students at tip.

4 **Tenting for Carolina**

General Tenting Policy

Capacity and Wait List

The maximum number of tents in Krzyzewskiville is one hundred standard tents and an additional number of Flex Tents, as designated by the Head Line Monitor.

70 tent spots will be available for Black and Blue Tenting combined. 30 tent spots will be reserved for White Tents, and 30 tent spots will be reserved for Flex Tents.

If 80 or more Black Tents register within 24 hours of the registration form opening, there will be a trivia contest before the start of Black Tenting. This trivia contest will relate only to the current Duke Men's Basketball team/season to provide equal opportunities for students of all ages and varying degrees of Duke Basketball knowledge prior to attending Duke. Any tent that would like to participate must submit a tent roster with at least ten members at least 24 hours before the trivia contest.

Tents that score in the top seventy will be allowed to Black Tent. Note that Black Tents still must participate in a second trivia contest to determine the order of Black Tents (see page 29 for Black Tent ordering).

Tents that do not score in the top seventy will be placed on the waitlist in order of decreasing trivia scores. Any tent that has registered for non-Black Tenting (Dirty Black, Blue, etc.) will be

placed at the end of the waitlist, behind all tents that participated in the trivia contest. If a non-Black Tent would like to participate in the trivia contest, the tent can re-register as a Black Tent.

If 71-79 Black Tents register within 24 hours of the registration form opening, the tents that are allowed to Black Tent will be determined by the time that the registration form is submitted.

If K-Ville reaches capacity at any other time, the Line Monitors will create a waitlist on a first-come, first-served basis, based first on desired start date and then on the time that the registration form is submitted.

Once K-Ville reaches full capacity, the waitlist for Black and Blue Tenting will lock in place based on the order of intended start date. Any changes to intended start date after this point will not affect the order of the waitlist. In the instance that both White and Flex Tenting fill up in the Race to the Secret Spot, the waitlist for Black and Blue tents will be used for further entrance into K-Ville.

Starting a Tent

A tent is comprised of a maximum of twelve (12) people. Occupancy requirements for each tenting period remain the same regardless of the number of people in the tent.

Tents who wish to start tenting must submit the registration form twenty-four hours prior to their desired start time and wait for confirmation from a Line Monitor.

Each tent will have a five-day period after they begin tenting during which they can change their roster online. After those five days, any roster changes must be emailed to headlinemonitor@gmail.com and be approved by the Head Line Monitors.

Daytime Hours and Curfew

Tenters on duty must be within the K-Ville city limits at all times. The number of tenters required at a given time varies based on the current tenting period and the time of day.

Each day is divided into day and night hours. A different number of tenters on duty is necessary from day to night.

Night Hours are defined as:

	Sunday - Thursday	Friday and Saturday
Night	1 am - 7 am	2:30 am - 7 am

All other times will count as Day Hours.

Line Monitor Presence

To address problems that may arise outside of tent checks, one Line Monitor will be sleeping in K-Ville each night, in a designated Line Monitor tent that will be labeled for ease of identification.

Tent Checks

To ensure that each tent is appropriately representing its place in line, the Line Monitors will call tent checks.

The Line Monitors may announce a tent check at their discretion. A check will be signaled by the sounding of a bullhorn siren. A Line Monitor will circle the entirety of K-Ville with the horn to ensure that it is heard by all tenters.

To check in, gather all members of your tent in the area between the Card parking lot and the Schwartz-Butters plaza. Please wait until the required number of tenters are present to check in with a Line Monitor — this allows us to more quickly check in entire groups. We cannot check in your tent until all required members are present.

Tents who have yet to be checked but appear to be missing will — at a minimum — be given **three warning calls over the bullhorn** before being marked as absent. After the final warning call, an additional two minutes will be given to allow for tenters to check in. After this time elapses, the check is officially over.

Line Monitors cannot be held responsible for checks missed due to tenters using the bathroom, failing to hear the siren due to the use of noise-cancelling headphones, being asleep in the tent, or similar related circumstances.

Missed Checks

In order to make a tent check, the correct amount of tent members for the designated period must be present within the defined boundaries of K-Ville at the start of the check and check in with a Line Monitor during the duration of the check. Checking in entails each present group member presenting their Duke Card to a Line Monitor. If the tent fails to complete this, the check will be counted as a missed check for that tent.

Each tent is allowed one missed check per tenting period. This first missed check is meant to accommodate for any unfortunate circumstances or accidents wherein Line Monitors cannot verify that a tent made a check. Missing a second check will result in the tent being bumped to the end of the line, behind all registered tents.

An email from headlinemonitor@gmail.com to your tent captain within 24 hours will inform you of your miss. If you feel a miss has been assigned in error, please contact the Head Line Monitors at headlinemonitor@gmail.com to discuss your circumstances. In the event of an irreconcilable disagreement, the Head Line Monitors' decision may also be challenged in front of the DSG Judiciary.

If K-Ville is at a maximum capacity, the tent will be dropped to the end of the resultant wait list.

Grace

A grace period may be announced in which no tent checks will be called. During grace, tenters need not be on duty in K-Ville.

Grace shall be given on the following occasions:

- For one hour after a tent check is completed.
- Two hours before and after a men's or women's home basketball game.
- One hour before and after a men's or women's away basketball game.
- For any of the weather-related incidents as stated on page 8 of this policy.
- At any time for any length at the discretion of the Head Line Monitor via e-mail or text listserv. Sign up for the text and/or e-mail listserv [here](#).

Disability Accommodation

Duke University encourages persons with disabilities to participate in its programs and activities. If you anticipate needing any type of reasonable accommodation or have questions about the physical access provided, please contact Leigh Fickling in the Disability Management System at leigh.fickling@duke.edu.

Black Tenting

Dates

Black Tenting is the first period of the Tenting season. Following the conclusion of Black

Tenting, missed checks will clear and all Black Tents will begin following Blue Tenting rules.

Black Tenting begins on **January 12th, 2019 at 11PM** and ends on **January 23rd, 2019 at 11PM**.

Occupancy Requirements

Two members of the tent must be on duty during the day. **Ten** members of the tent must be on duty during night hours.

Tent Ordering

The subset of Black tents starting as early as possible on the first night of Black tenting will be assigned a tent letter (e.g. "X").

The order of these tents will be determined by participation in a trivia contest, attendance at sporting events, and the reception of spirit awards.

Exact dates for these sporting events will be announced in advance on kvillenation.com, the Krzyzewskiville Facebook page and the K-Ville Nation Facebook page. Additionally, the length of time required at these events will be posted.

Spirit awards will include several categories, as decided on by the Head Line Monitors (e.g. Best Decorated Tent), and will be voted on by the black tenters. Tenters will not be able to vote for their own tent.

Dirty Black tents starting after the beginning of the Black Tenting period, but before the start of

Blue Tenting, will all be ordered on a first-come, first-served basis after Black Tents that started at the beginning.

In the event that multiple Dirty Black tents choose to pitch on the same day, the ordering will be determined by the time at which the online form was submitted.

Blue Tenting

Dates

Blue Tenting is the second period of the Tenting season. Following the conclusion of Blue Tenting, missed checks will clear and all Black and Blue Tents will begin following White Tenting rules.

Blue Tenting begins on **January 23rd, 2019 at 11PM** and ends on **February 3rd, 2019 at 11PM**.

Occupancy Requirements

One member of the tent must be on duty during day hours. **Six** members of the tent must be on duty during night hours.

Tent Ordering

The subset of Blue Tents starting at the beginning of the Blue Tenting period will be assigned a tent number based on their start date

In the event that multiple Dirty Blue Tents choose to pitch on the same day, the ordering will be determined by the time at which the online form was submitted.

Dirty Blue tents starting after the beginning of the Blue Tenting period, but before the start of White Tenting, will all be ordered on a first-come, first-served basis after Blue Tents that started at the beginning.

White Tenting

Dates

White Tenting is the third period of the Tenting season.

White Tenting begins on **February 3rd, 2019 at 11PM** and ends on **February 14th, 2019 at 12PM**.

Occupancy Requirements

One member of the tent must be on duty during the day. **Two** members of the tent must be on duty during night hours.

Race to the Secret Spot

Given the high demand for White tents, the order of White tents will be determined by a scavenger hunt, or at the discretion of the Head Line Monitor.

The Line Monitors will select locations on West Campus which correspond to clues. Students who wish to White tent must arrive at each location with a printed copy of their tent roster. The roster should include every tenter's name, netID and email address and should indicate which tenter is the tent captain.

Only **one** tenter is required to arrive at a location for a roster to be accepted at that location.

To successfully secure a spot in White Tenting, the group must be among the first 30 groups to

present a roster at each location. To become a flex tent, the group must be among the 31-60 groups to present a roster at each location. In the event that K-Ville is not filled to maximum capacity after the Race to the Secret Spots, we will continue to accept rosters on a first-come, first-serve basis.

- White tent rosters given after K-Ville has reached capacity will be added to the end of the waitlist, after those already on the Blue and Black Tenting waitlist.

Tent Ordering

White tents will be ordered in the same order in which tents finished in the Race to the Secret Spots.

Flex Tenting

Flex Tenting abides by the same rules and regulations as White Tenting, but Flex tents are **NOT GUARANTEED** a spot in the Carolina game.

These tenting spots will be filled through the Race to the Secret Spots. The 31st to 60th groups to complete the Race to the Secret Spots will receive Flex Tenting spots.

In the event that K-Ville is not filled to maximum capacity after the Race to the Secret Spots, we will continue to accept rosters on a first-come, first-serve basis.

Tent Ordering

Flex tents will be ordered in the same order in which tents finished in the Race to the Secret Spots.

Waitlist

All groups after the 60th group to complete the Race to the Secret Spots will be added to the Flex Tenting wait list. They will be behind all tents from the Black and Blue tenting wait list who have not yet received a space in K-Ville. Of these Black and Blue waitlisted tents, 7 or more members of their Race to the Secret Spots roster must be originally listed on their Black and Blue roster.

Personal Checks

P-Checks are conducted on an individual basis. Therefore, an entire tent will not be penalized should a member of their tent miss too many Personal Checks.

Dates and Information

Five Personal Checks will be called at any time over the course of two nights: **Friday, February**

15th, 2019 and Saturday, February 16th, 2019.

To obtain a wristband for the Carolina game, a tenter must check in at **three** of the **five** checks.

Individuals who fail to report to three of the five Personal Checks will be ineligible to receive a wristband for the Carolina game. Those students will not, however, penalize the other members in their tent.

Information regarding wristbands for the Carolina game will be released on kvillenation.com as well as the Krzyzewskiville and K-Ville Nation Facebook pages closer to game day.

Students are expected to adhere to Duke University policies regarding alcohol and safety at Personal Checks. This means that students may not have glass, play drinking games, or have more than six beers on their person at any one time.

Those who have serious reasons for missing Personal Checks need to e-mail headlinemonitor@gmail.com two weeks before P-Checks with their excuse, and must obtain written permission from the Head Line Monitors to attend Makeup P-Checks. Details about make-up Personal Checks for those tenters who cannot attend at the above date will be released at kvillenation.com closer to the end of tenting.

5 Wellness Policy

Tenting Wellness Policy

Upon registration, tenters will be expected to fill out the Wellness Contract (see Wellness Contract below). Failure to abide by the rules outlined in the contract will result in removal from the line for the individual tenter. The tent will not be penalized for the actions of one tenter. The tent will be able to make a substitution if one of their tent members is removed by emailing the name and net ID of the replacement tenter to headlinemonitor@gmail.com.

Gameday Wellness Policy

If a student is forcibly removed from Cameron Indoor Stadium, for any reason, they must set up a meeting with Duke Wellness before they are eligible to attend another game or receive a wristband for the Carolina game.

Line Monitors, Staff One, and Duke University Police reserve the right to deny entrance or remove a student from Cameron Indoor for excessive drunkenness. This applies to every home game, including the Carolina game.

Wellness Contract

Krzyzewskiville is an incredible tradition here at Duke. We are the only school in the country with a high caliber athletics program that does not do a lottery system for students. Other schools charge students hundred of dollars for tickets, creating an unfair advantage for students of wealthy backgrounds. Krzyzewskiville, however, is rooted in honoring the most committed fans and their dedication to Duke basketball. The tenting system is designed so that spots in Cameron are awarded on the basis of demonstrated dedication and commitment to the team.

Additionally, KVille creates a unique sense of community on Duke's campus. On game days,

students from all parts of campus come together to rally behind Coach K and our team. With this tradition comes responsibility. Other Duke traditions have stopped because of unsafe behavior of students. Tailgate, for example, was stopped due to an incident with excessive alcohol. While KVille should be a place of fun and school spirit, it also needs to be a place of responsibility and respect. In an effort to ensure that the tradition of KVille can be enjoyed by future generations of Blue Devils, we need to create and foster a safe atmosphere both inside and outside of Cameron.

In order to protect the tradition of KVille, certain expectations must be met by its residents. Below are some expectations and consequences of behavior in KVille:

1. No glass bottles of any kind.
2. No drinking games of any kind. If you continue to play drinking games after an initial warning, you will need to schedule and attend a meeting with DuWell in the Wellness Center before receiving eligibility to attend the UNC game.
3. If you are removed from Cameron at any game prior to Carolina, you will need to schedule and attend a meeting with DuWell in the Wellness Center before receiving eligibility to attend the UNC game.

As tenters, it is part of your responsibility to see that the KVille tradition continues for years to come at Duke. We hope that this effort will secure the longevity of this tradition, and make KVille a safer place for everyone. Please have every person in your tent sign this form. By filling out this form, you are acknowledging the expectations and consequences of your actions as a KVille resident.