

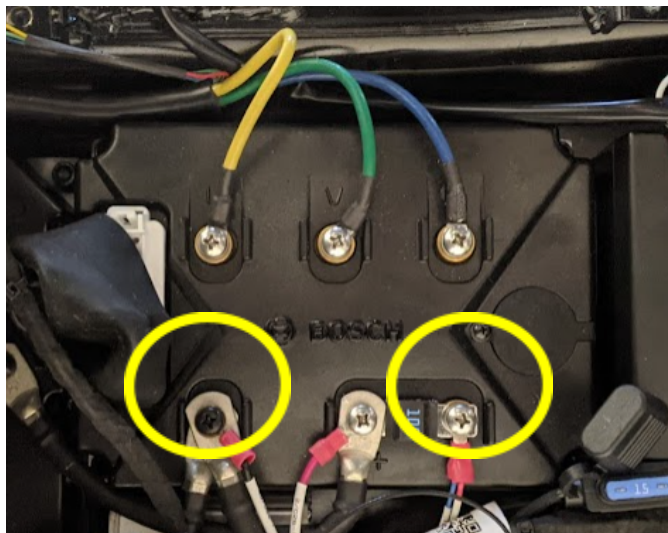
## 6.2 Roller does not start after checking internal batteries (6.1).

**Info:** The following steps are intended to correct the error if the scooter no longer starts with the customer cards and the diagnosis of chapter 6.1 was without success

### 1. Tests/Checks

If the main battery is inserted in the scooter, carry out the following steps. If not, go to step 5.1:

- 1.1. Measurement of the voltage on the engine control unit (Bosch) at pin B+/B- (circled in yellow)



- 1.2. Voltage between connection B+/B- greater than 40 V? ☐

**Yes - Hard Reboot**

**No - Step 1.3**

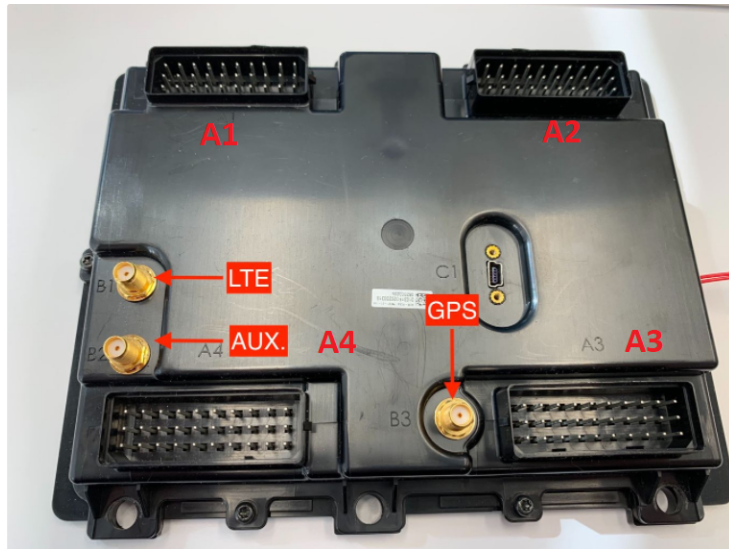


**From here it is absolutely necessary to disconnect the 12V battery, CB battery, DC voltage converter or remove the main battery.**

- 1.3. Checking the 2x fuses on the 12V battery and the 15A fuse on the ECU engine control unit ☐

- 1.4. If the fuses are OK, check the MDB connector

- 1.4.1. On MDB connector A1 pin control on connector and MDB side ☐



Reinsert incorrectly installed PINs correctly. Please document and forward to technical support ☐

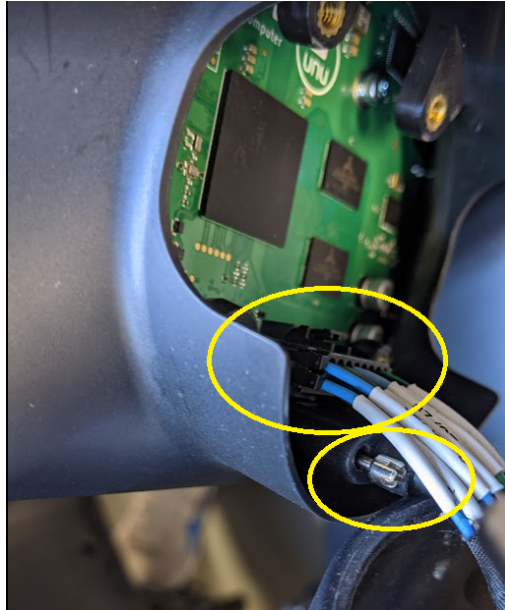
1.4.2. If all PINs are OK, check the display connectors ☐

1.4.3. Removing the front panel ☐

1.4.4. Checking the baby connector to the display ☐



- 1.4.5. Checking the 16-pin connector and the USB cable (display must be remove from scooter for access) ☐



- 1.4.6. If all plugs are ok -> replace MDB **SP-S-ASM-PCBA-MDB1-01**  
1.4.7. If the scooter cannot be switched on after replacing the MDB -> replace the DBC (display).