

---

ALEXIA ARNOULD - SET DESIGNER

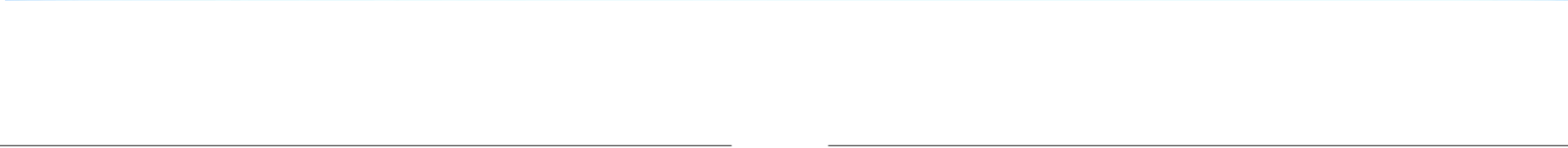
**ANTHEM**

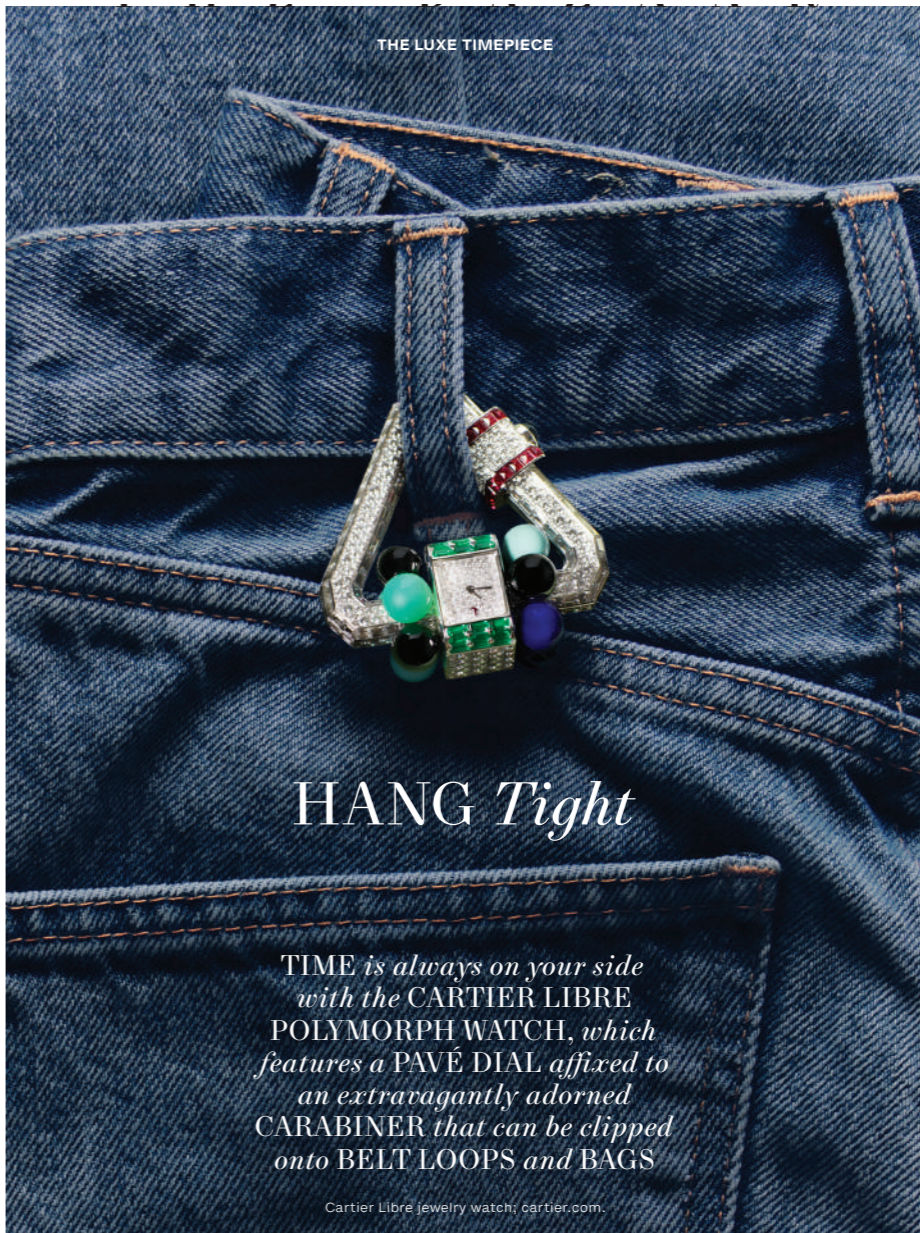
---











THE LUXE TIMEPIECE

# HANG *Tight*

*TIME is always on your side with the CARTIER LIBRE POLYMORPH WATCH, which features a PAVÉ DIAL affixed to an extravagantly adorned CARABINER that can be clipped onto BELT LOOPS and BAGS*

Cartier Libre jewelry watch; cartier.com



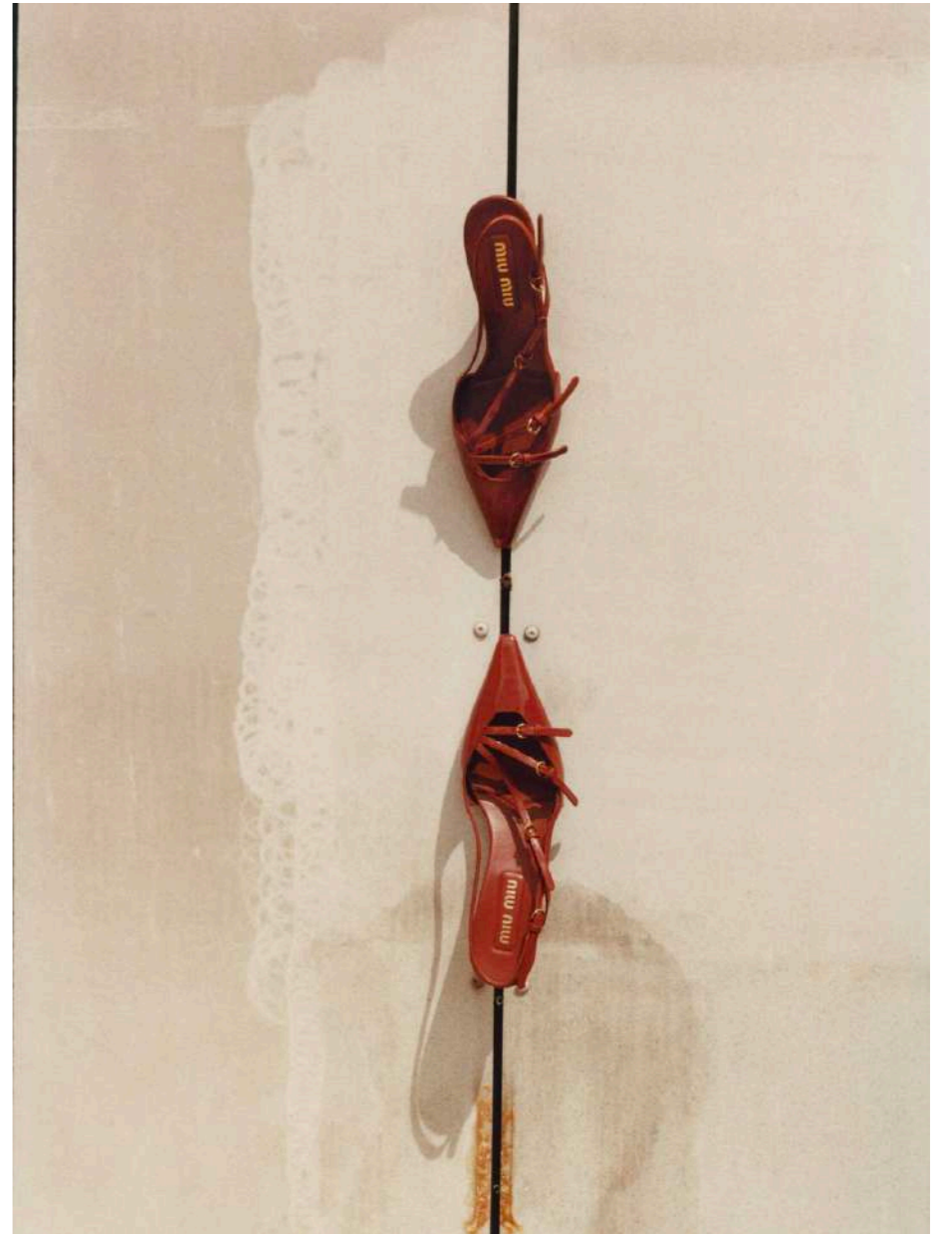


THE NECKLACE

# RAINBOW *Connection*

*BULGARI makes the kind of timeless STATEMENT PIECES that will always SHINE, like this high-jewelry NECKLACE that has seven JUMBO GEMS surrounded by 96 DIAMONDS and touches of black ONYX*

Bulgari High Jewelry Collection necklace; bulgari.com.

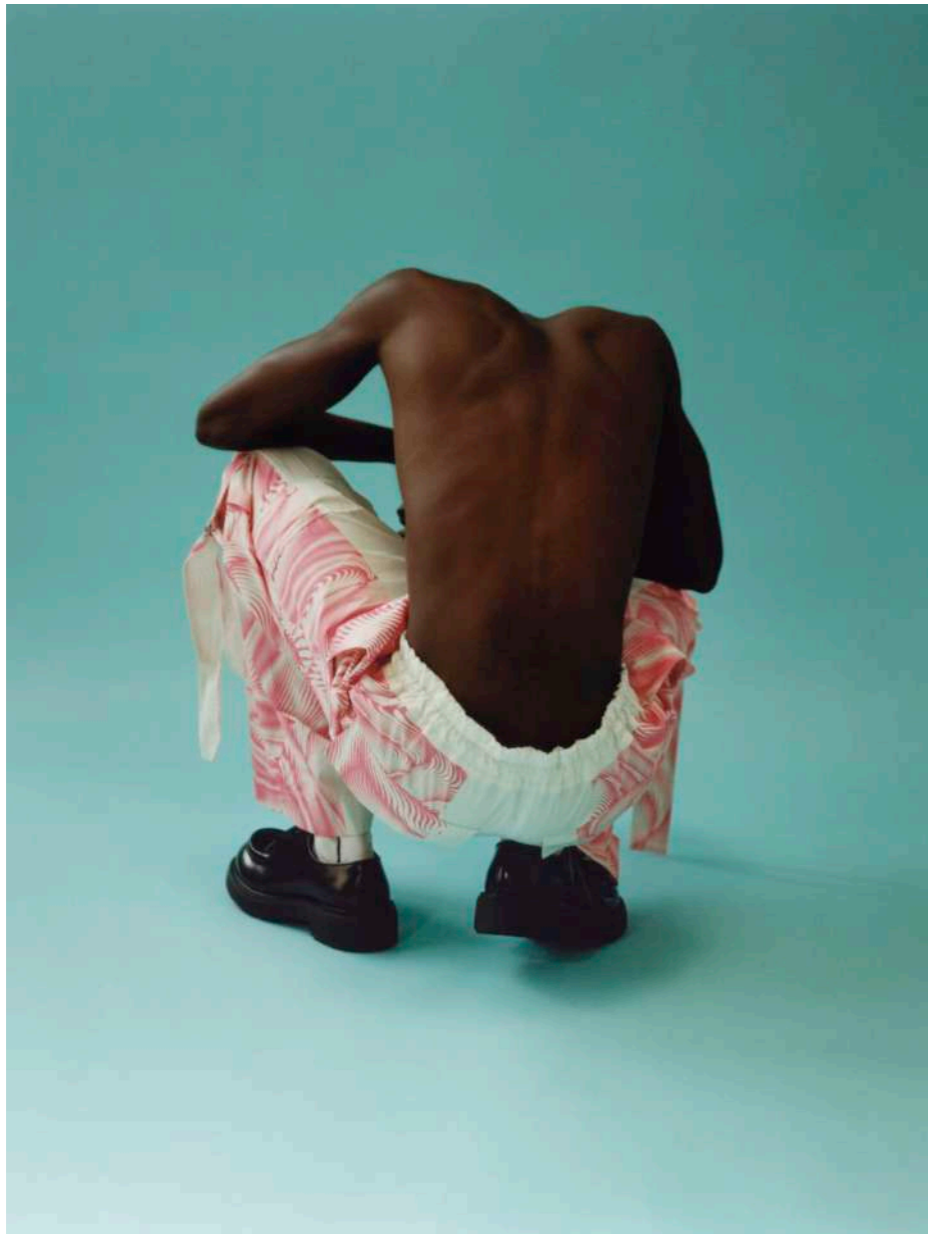




















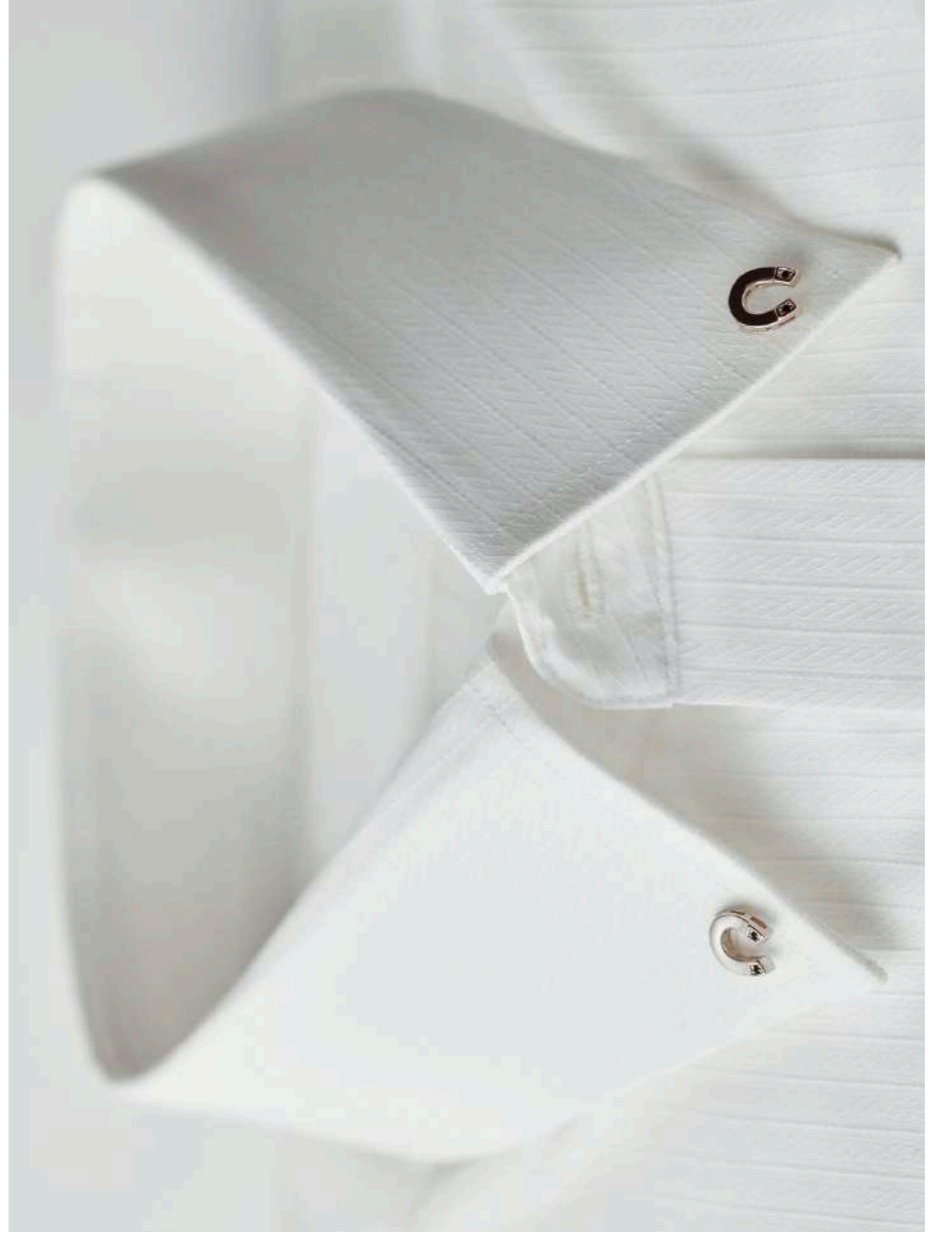
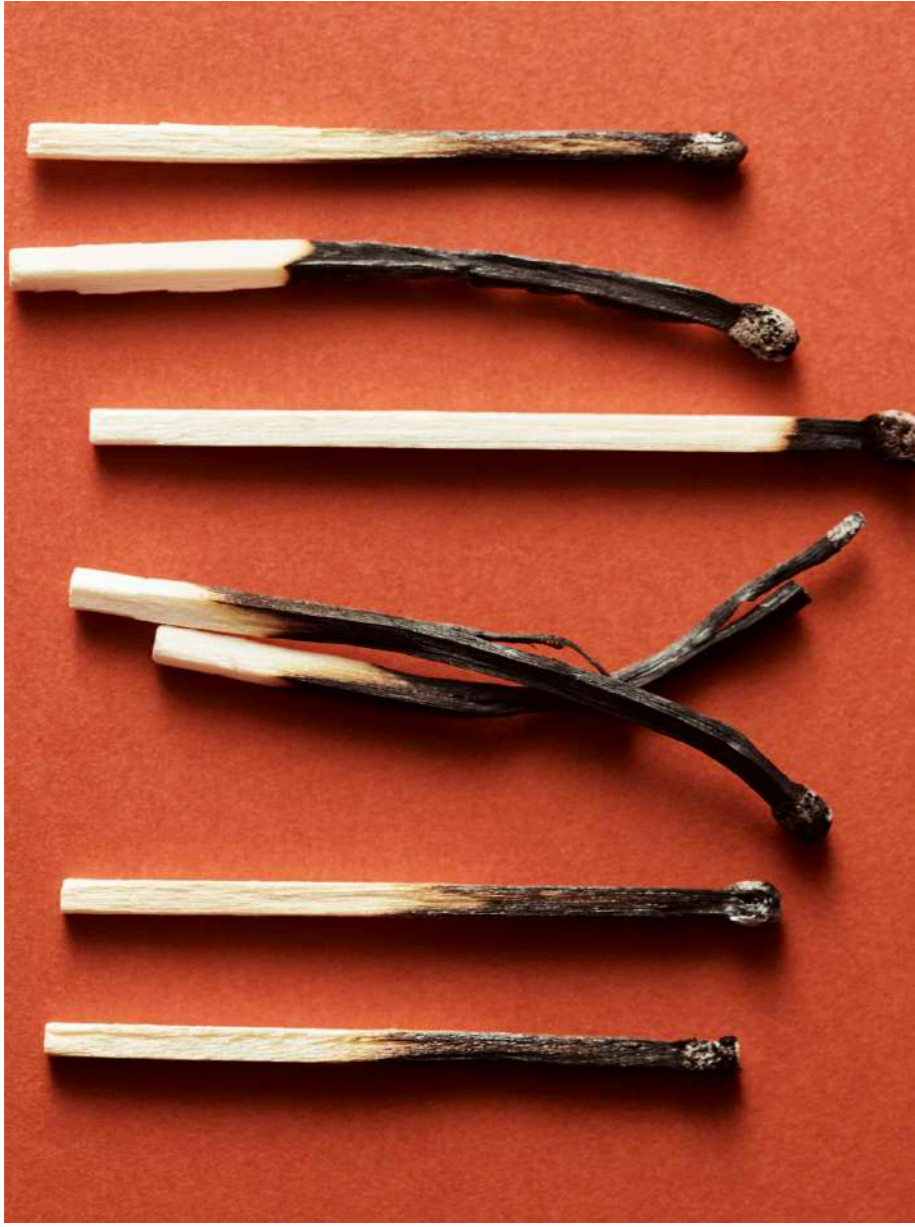




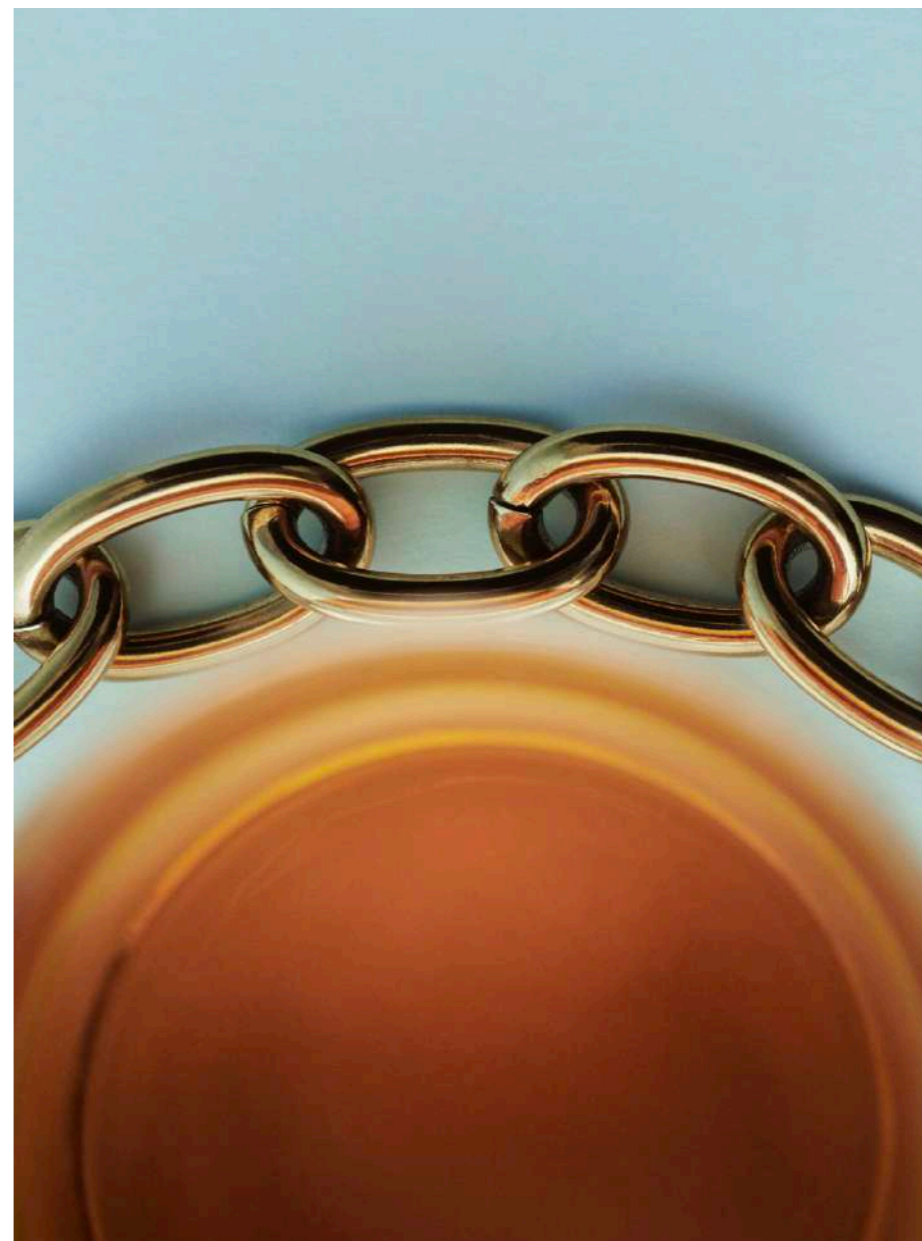






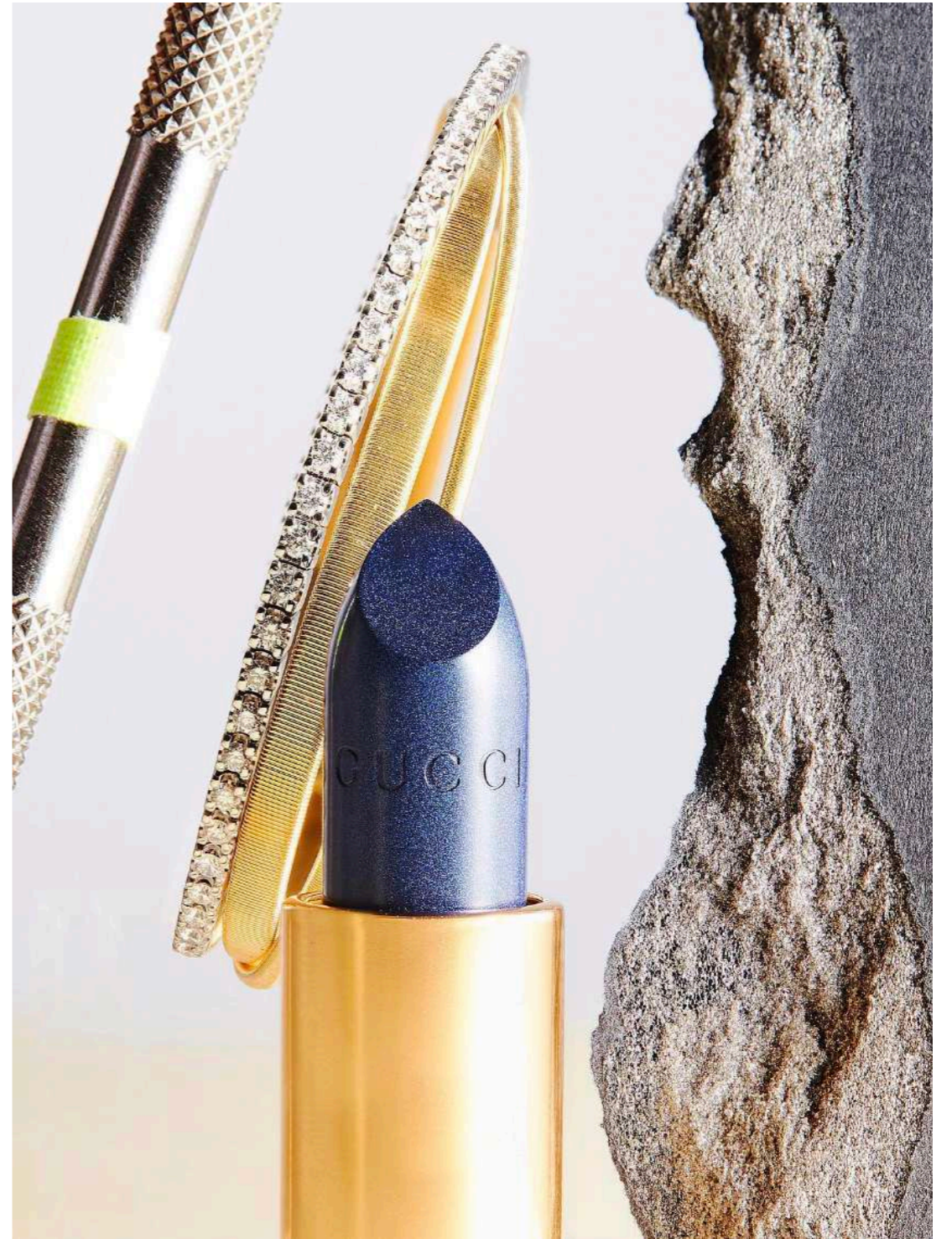


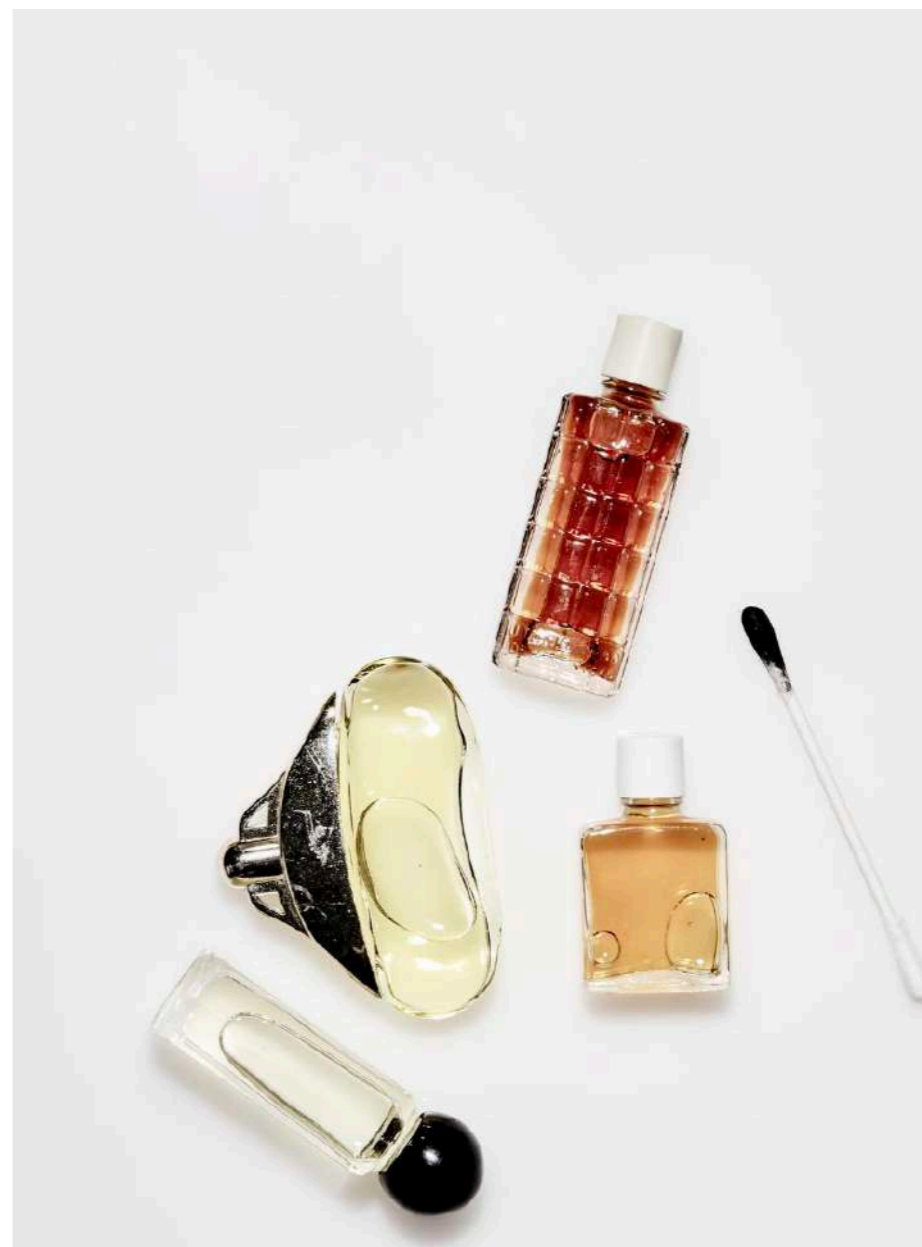






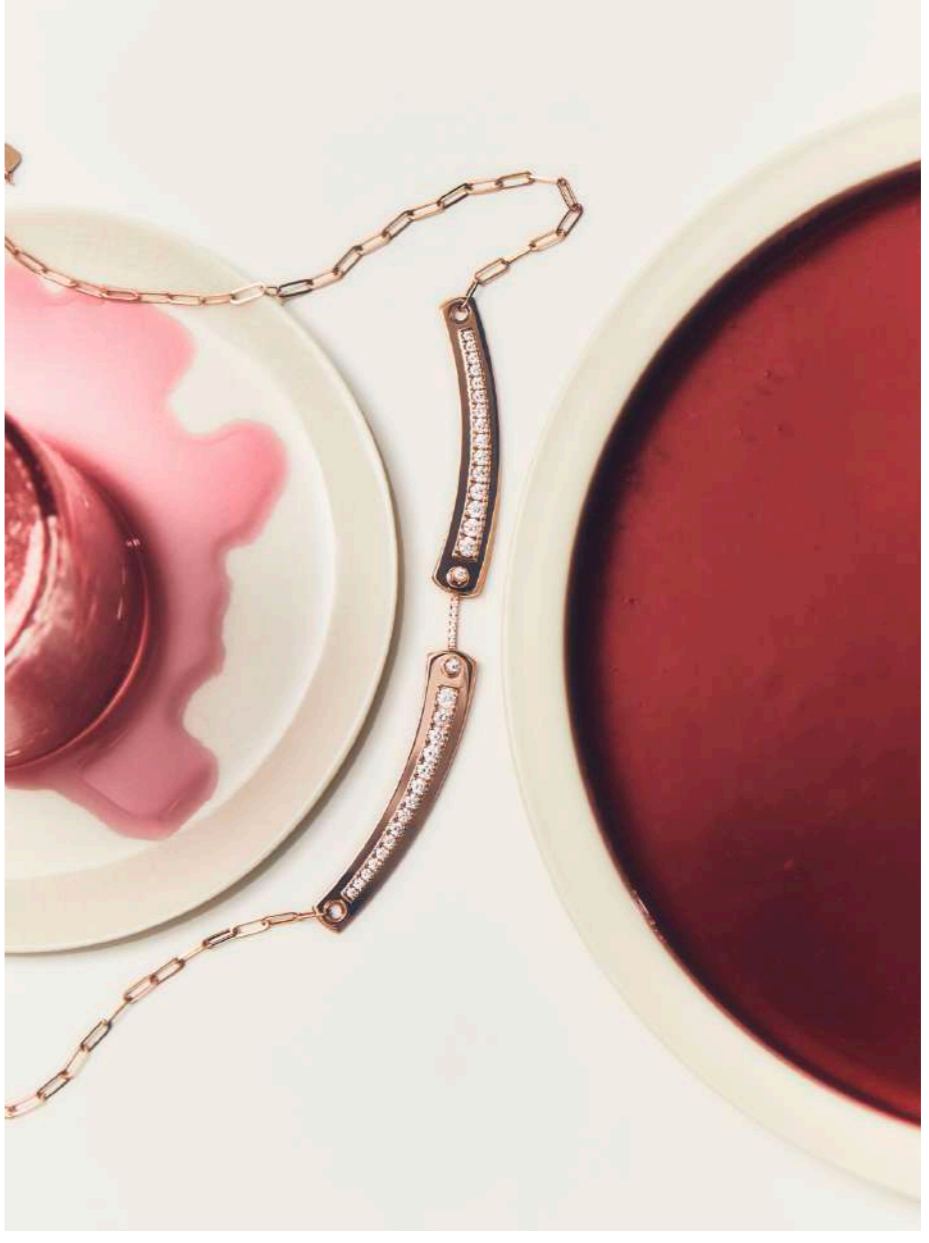




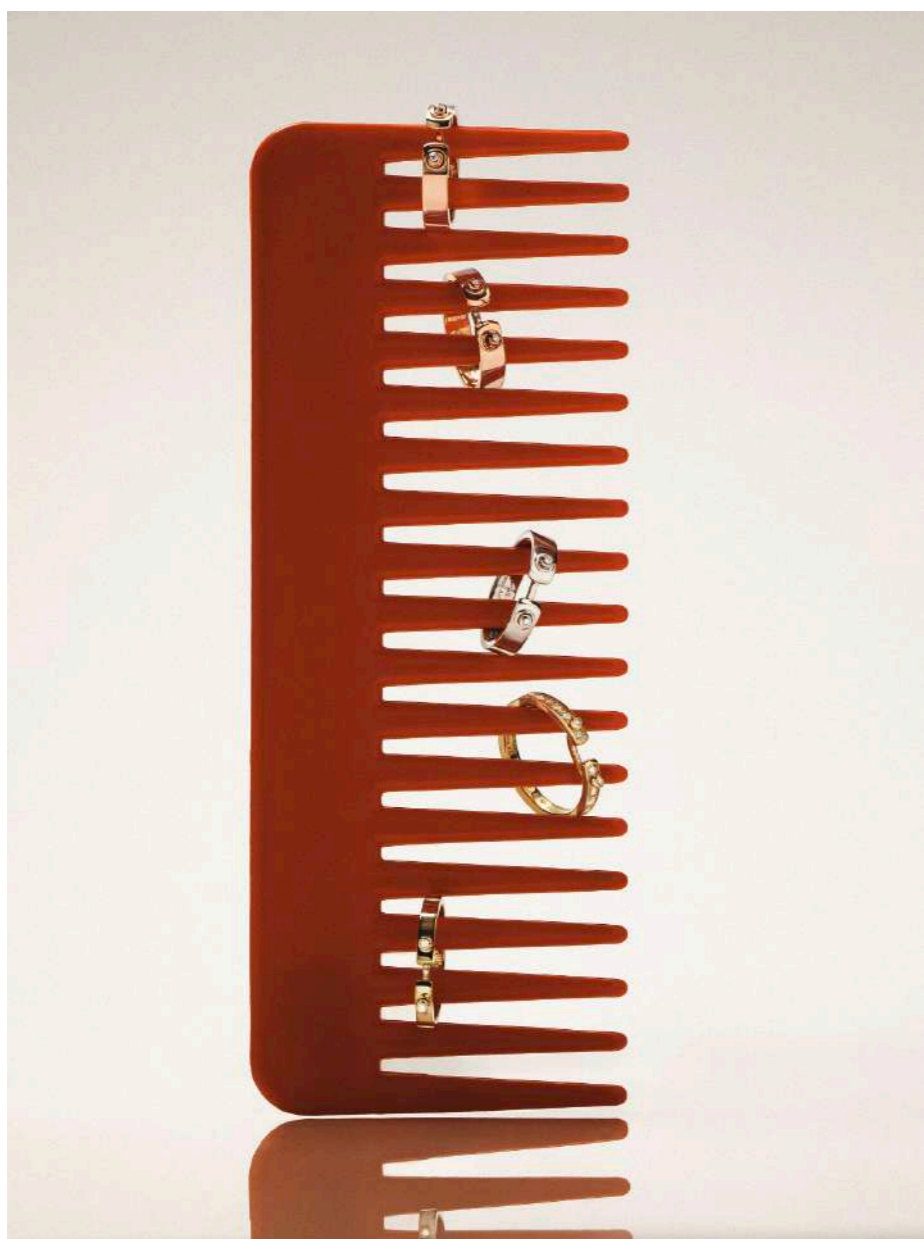






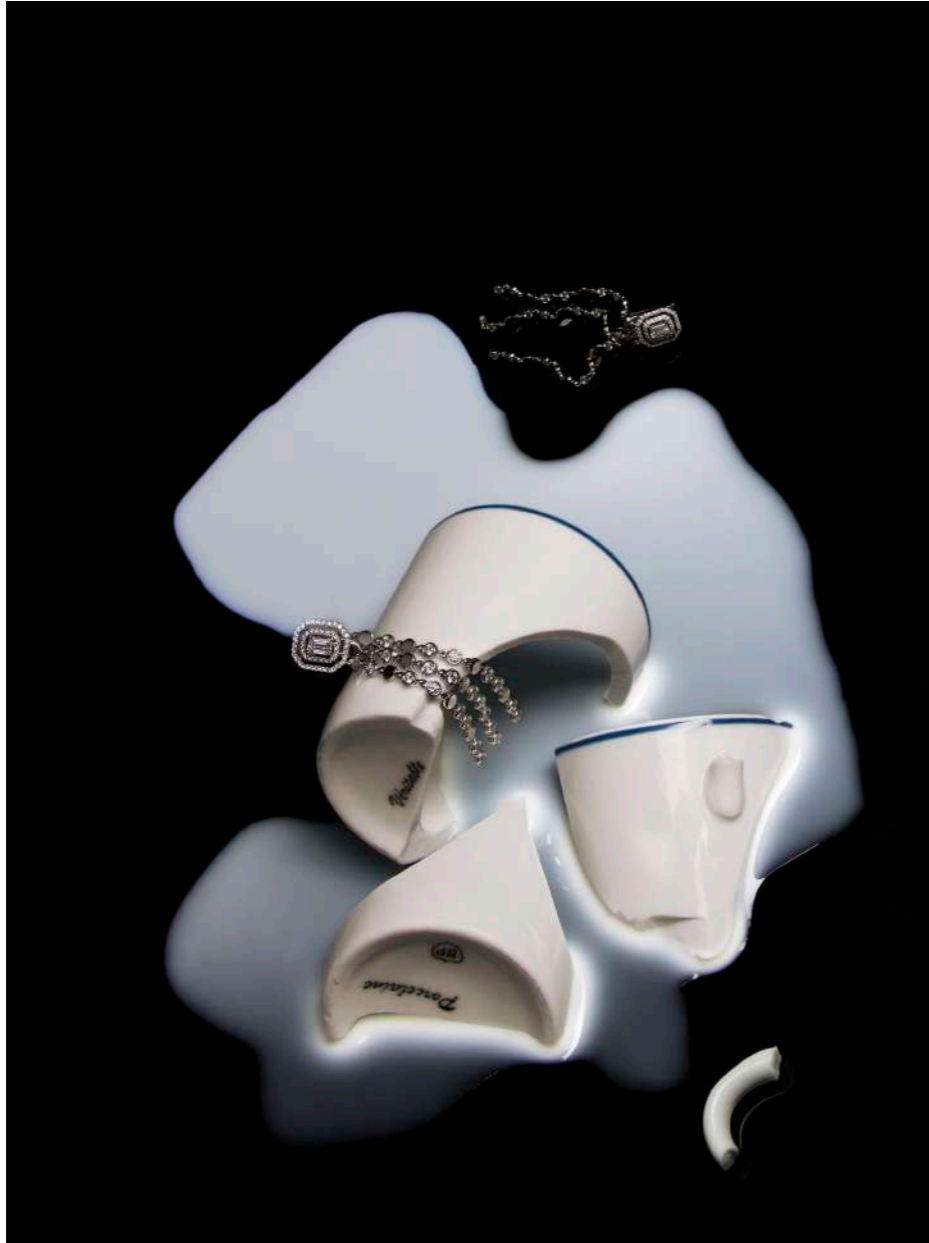








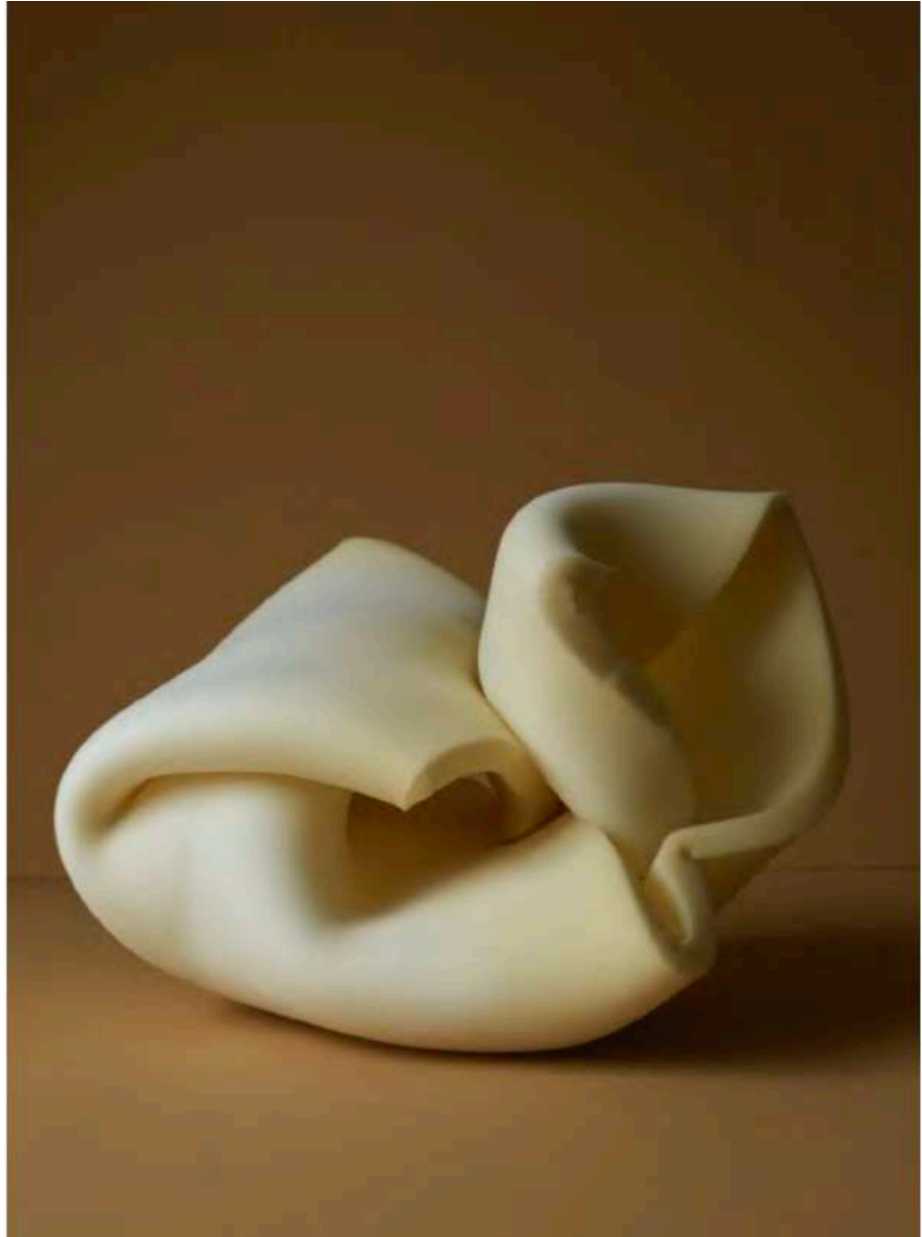






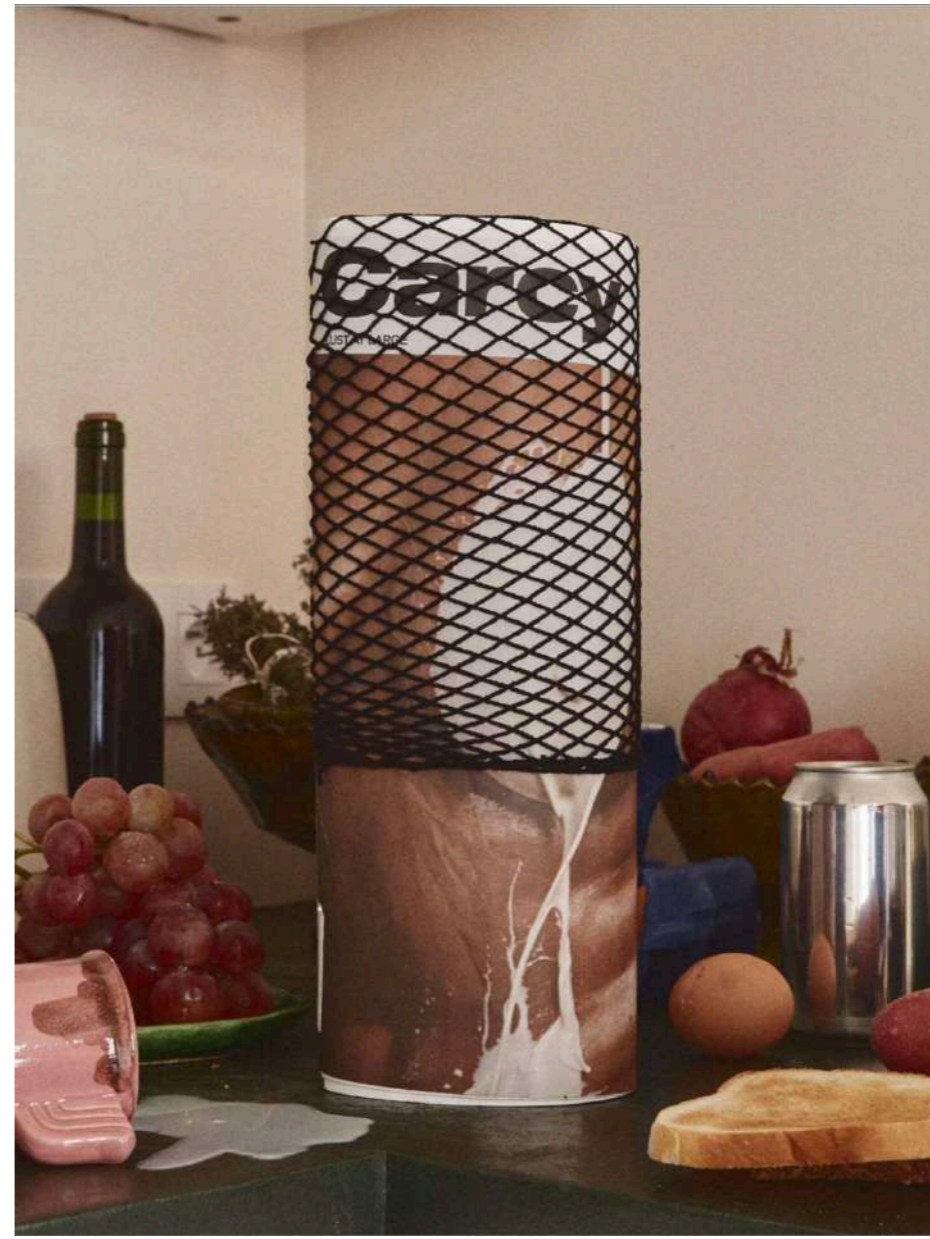












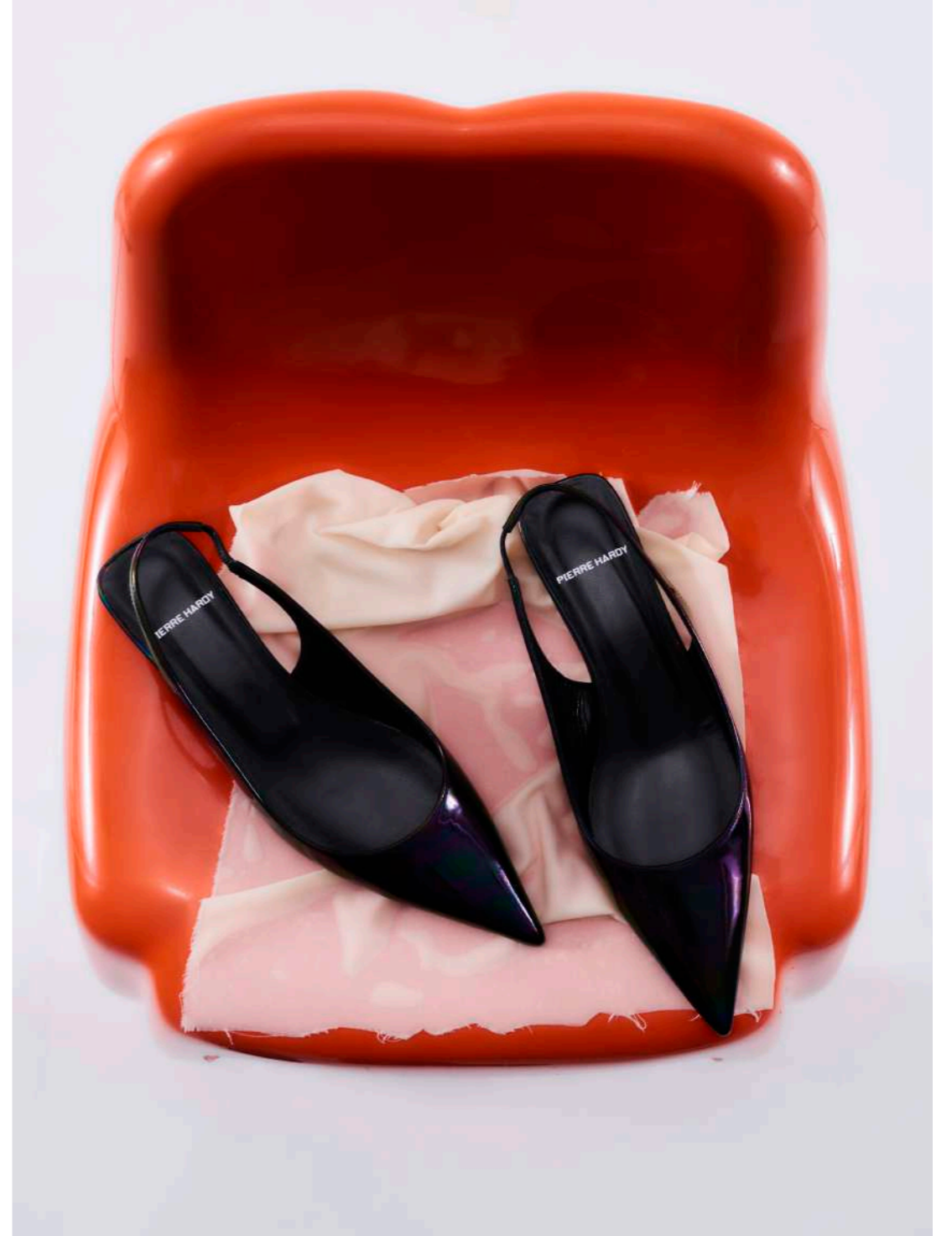


















---

43, RUE DE DUNKERQUE  
75010 PARIS

INFO@ANTHEMREP.COM

---

ÉMILIE FONTAINE  
ÉMILIE@ANTHEMREP.COM  
+33 (0) 6 47 82 18 67

EUGÉNIE CHEVALIER  
EUGENIE@ANTHEMREP.COM  
+33 (0) 6 50 26 53 50

**ANTHEM**

---