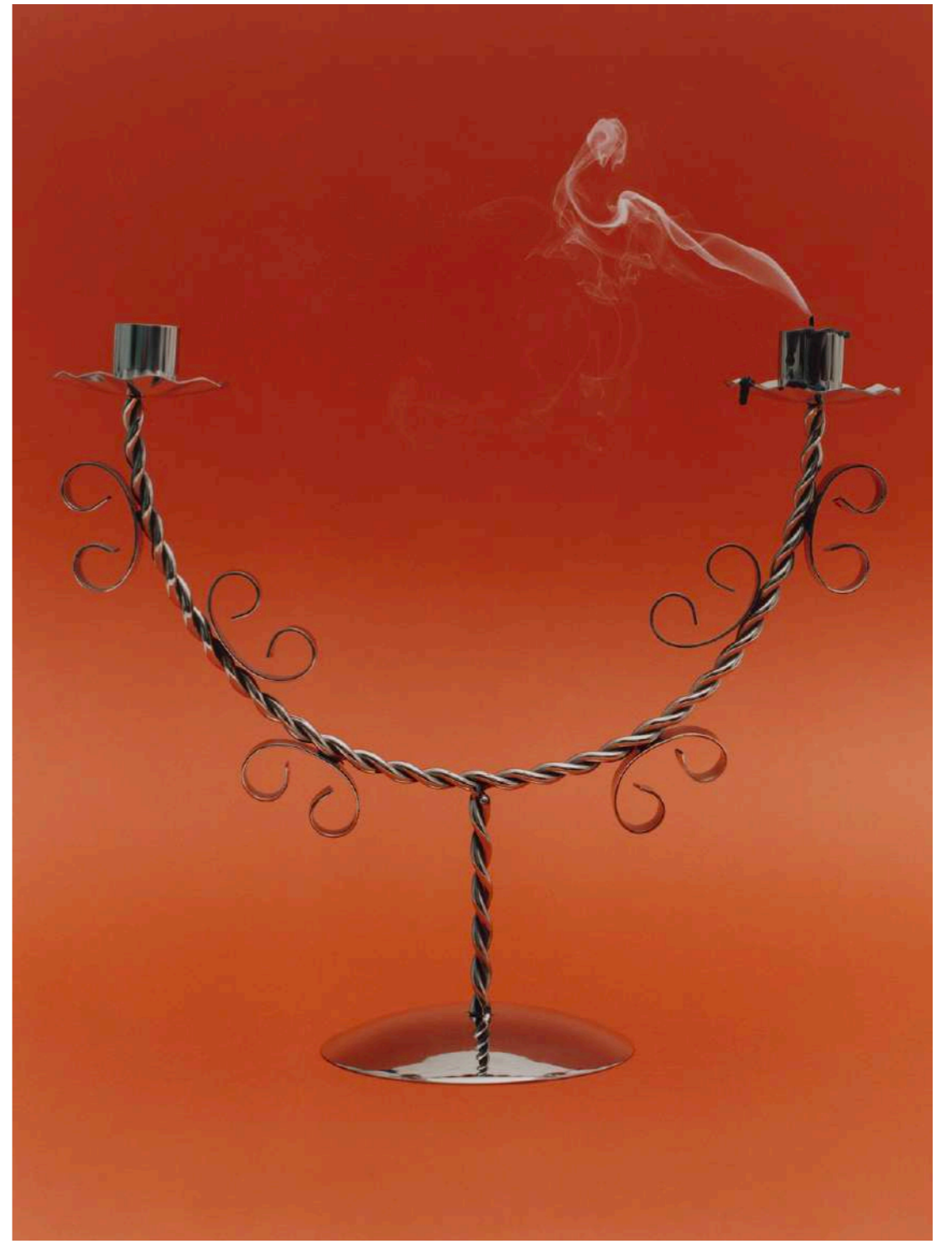

ANTHEM

CAMILLE LICHTENSTERN - SET DESIGN

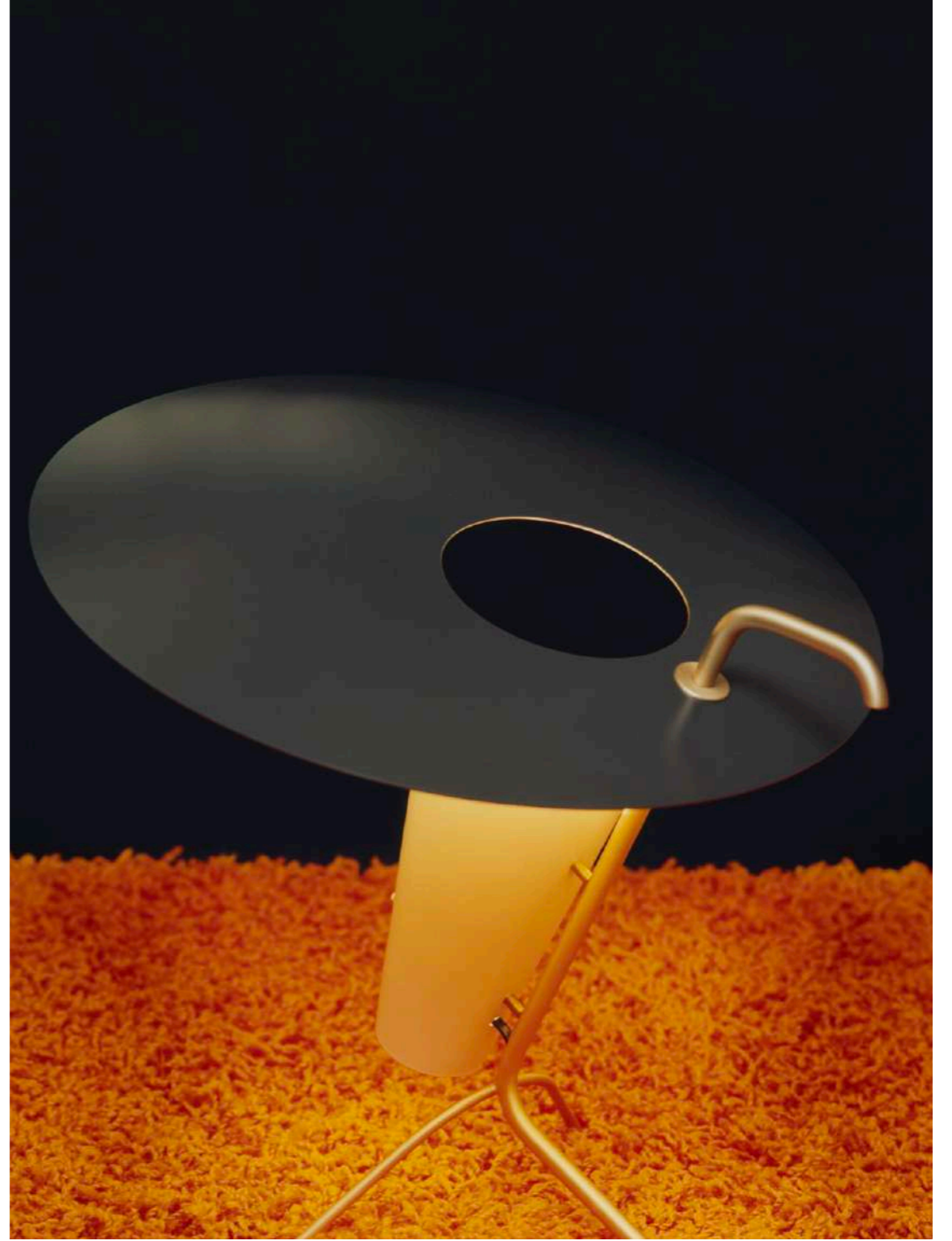
CAMILLE LICHTENSTERN IS A SWISS - PARIS BASED SET DESIGNER. SHE GRADUATED FROM ECAL LAUSANNE IN FINE ARTS AND HAS A CERAMICS DEGREE FROM HEAD GENEVA. AFTER PURSUING AN ARTIST CAREER BY FILLING UP SPACES WITH OBJECTS, SHE NOW SAYS THAT SHE FILLS UP IMAGES. HER PRACTICE FOCUSSES ON OBJECTS PAIRING AND COLLECTING, THERE IS A VERY PLAYFULL APPROACH IN HER WORK AND SHE HAS A VERY INTUITIVE WAY OF COMPOSING. SHE LOVES TO EXPLORE WITH NEW TEXTURES AND MATERIALS, ASWELL AS DELICATE LIFESTYLE SET-UPS.













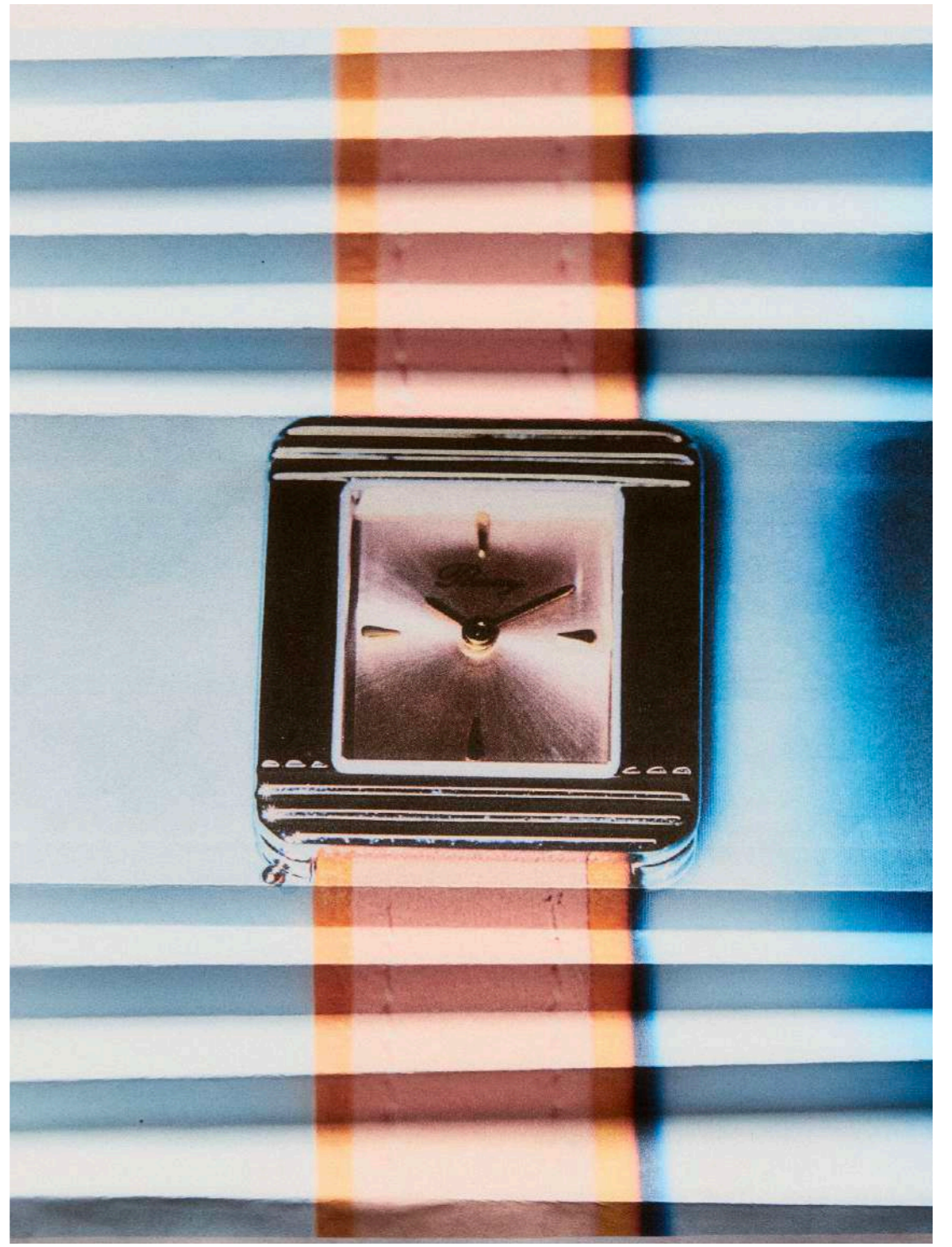
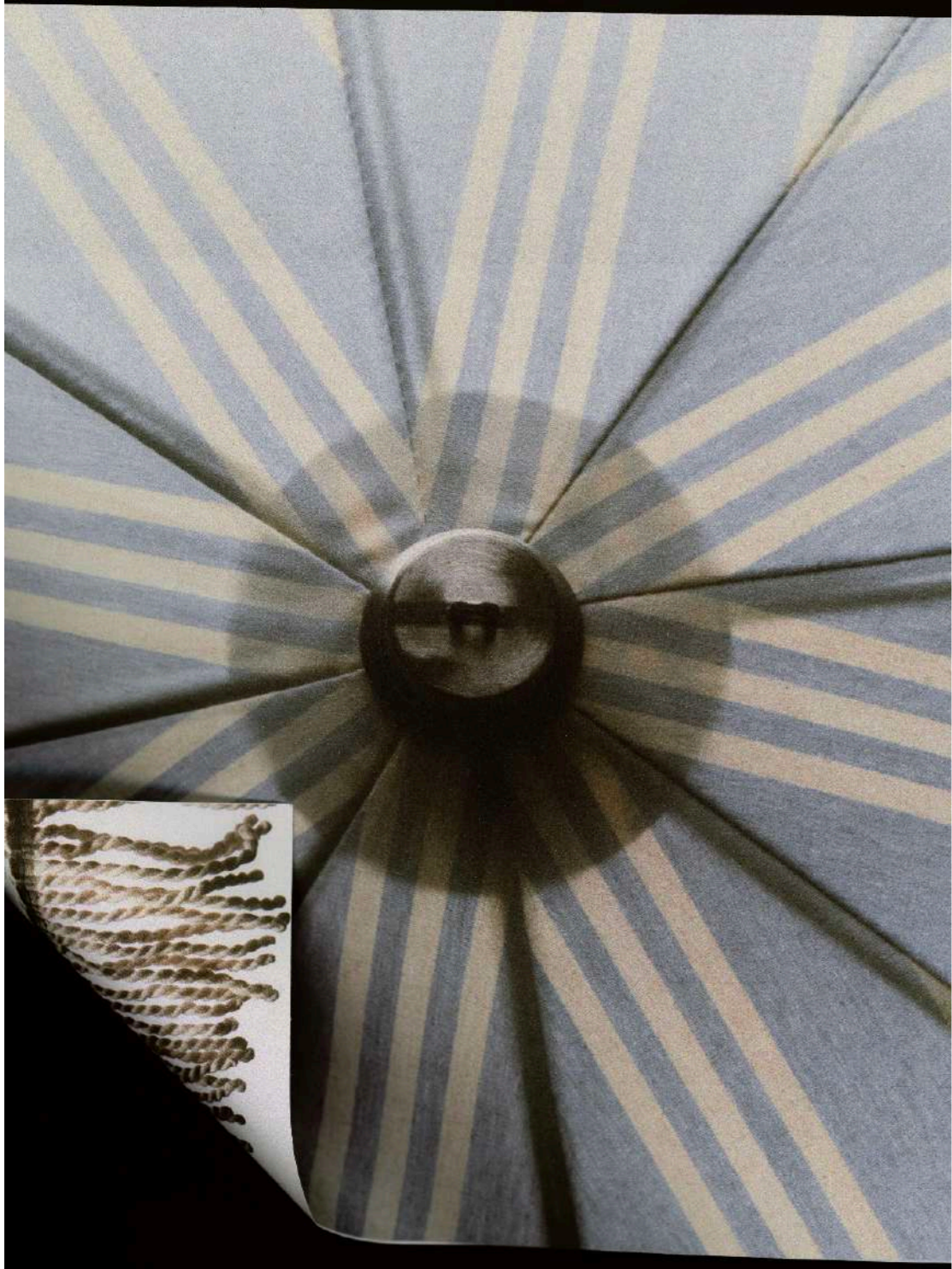


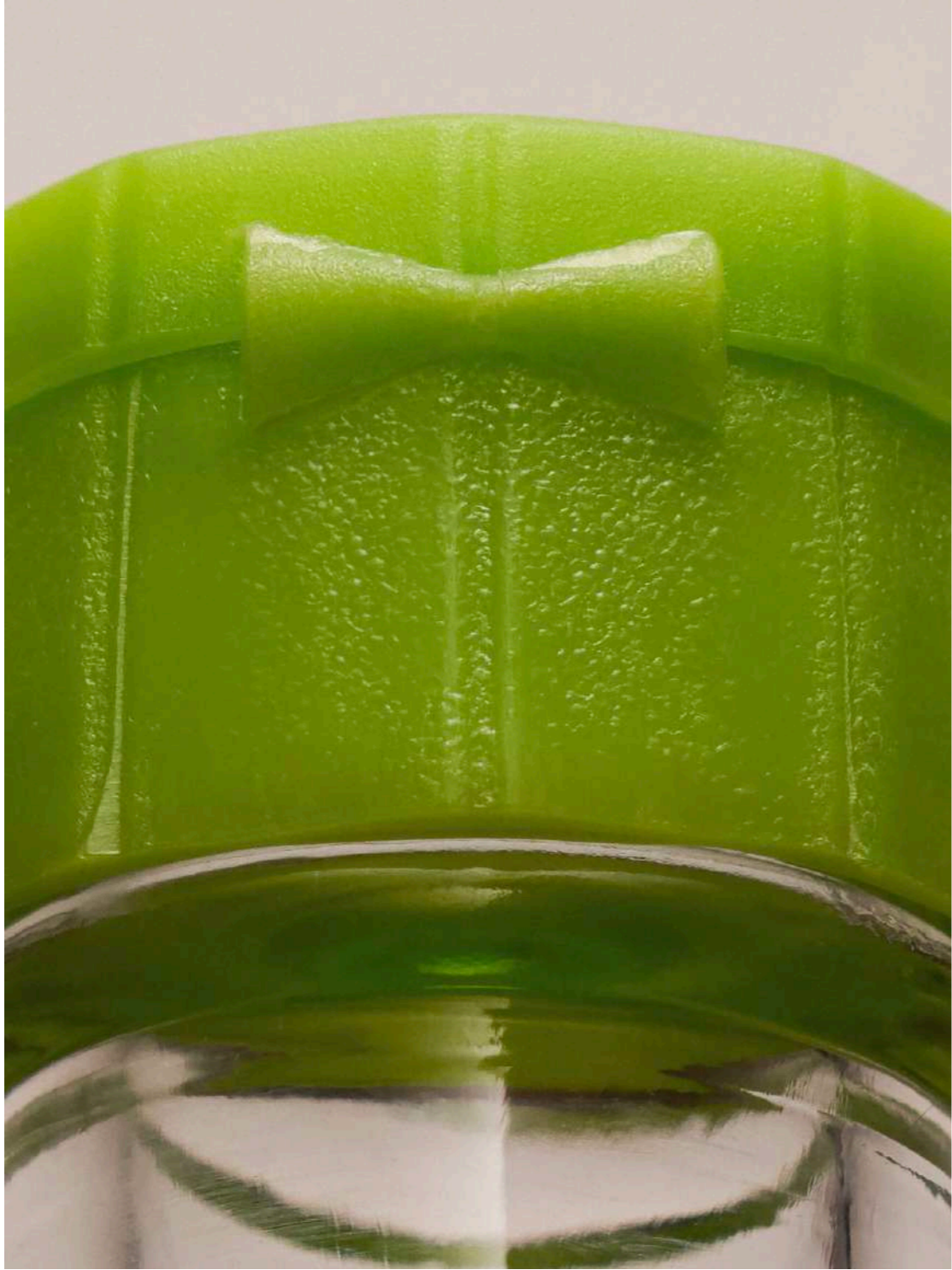


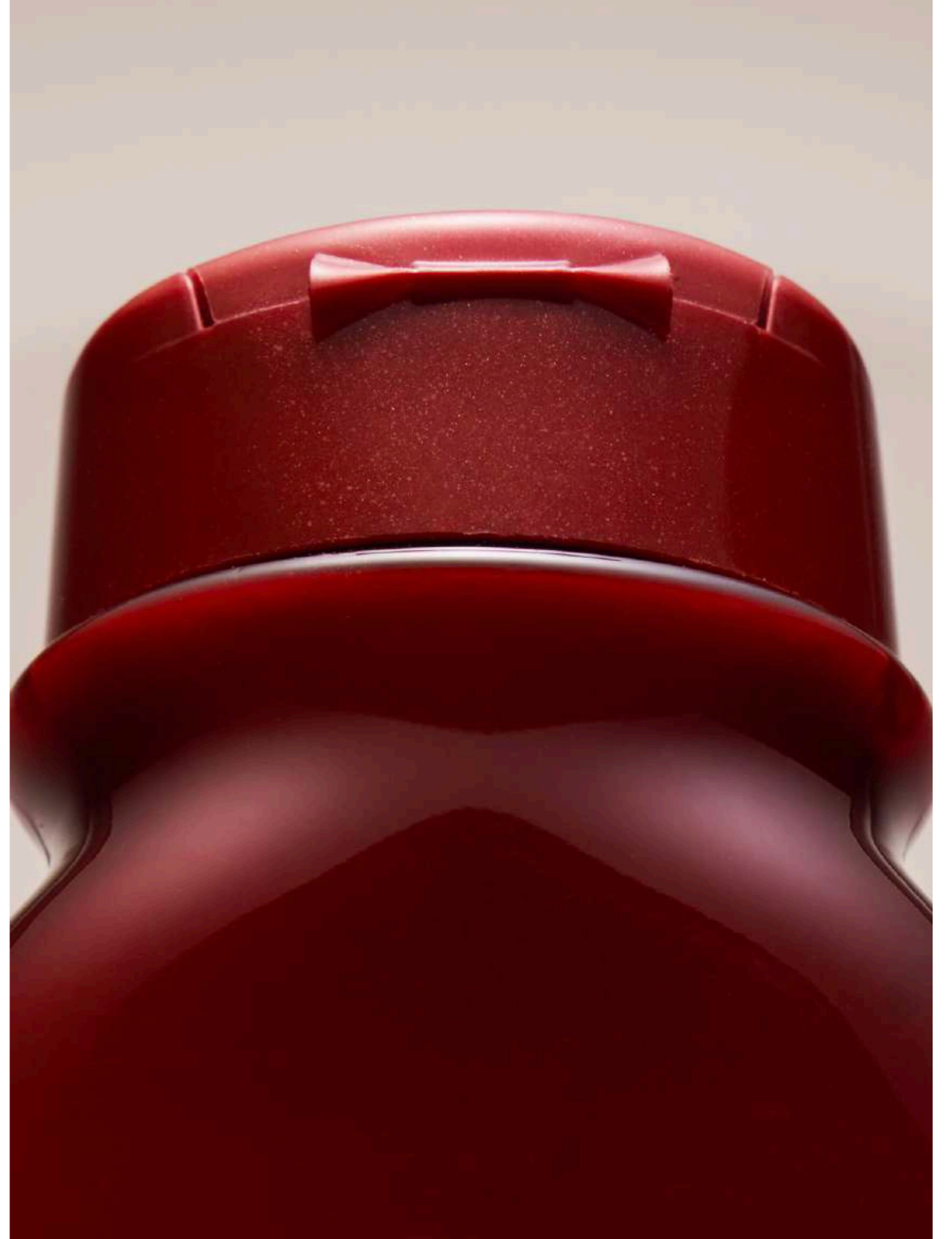
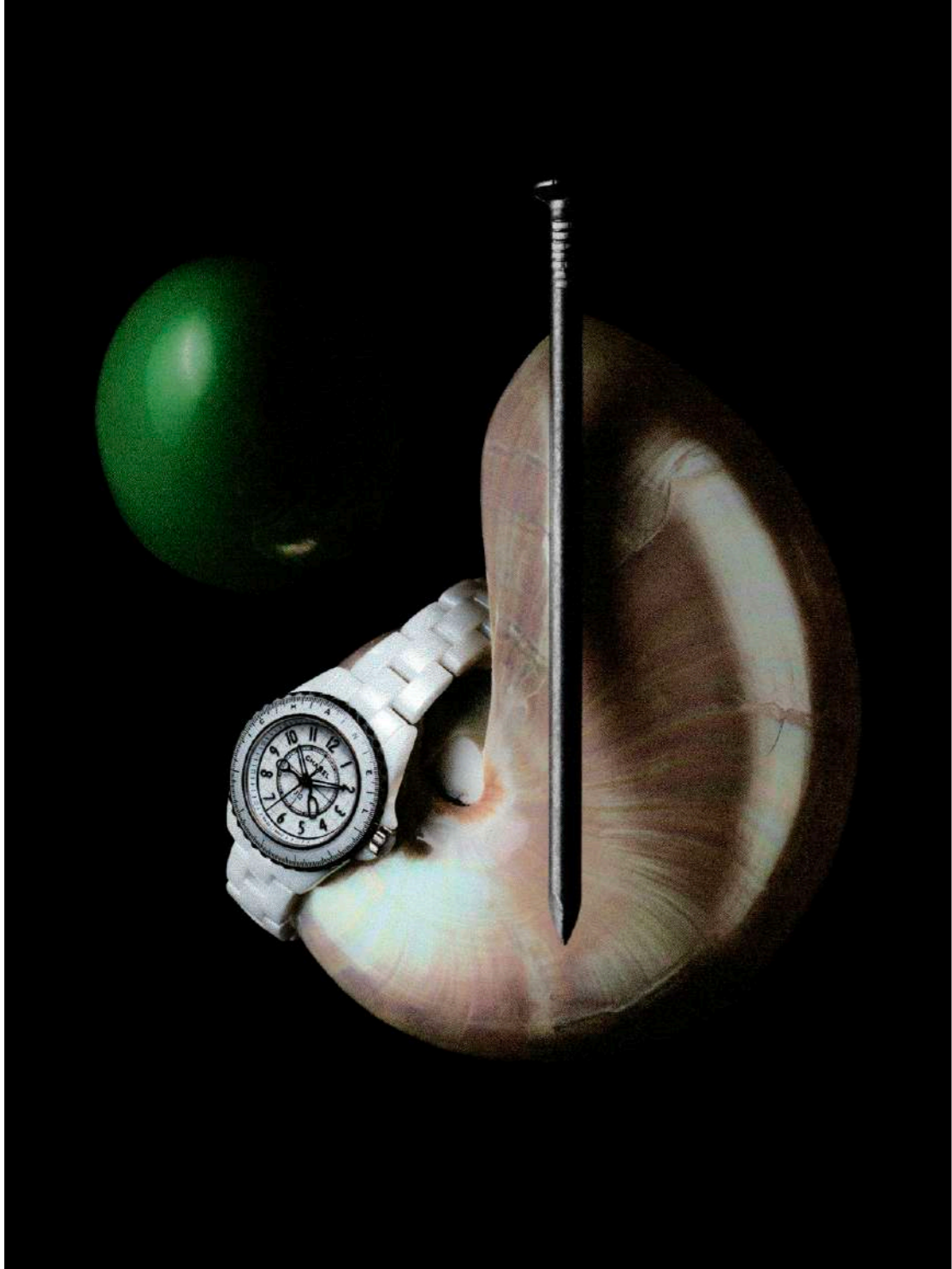




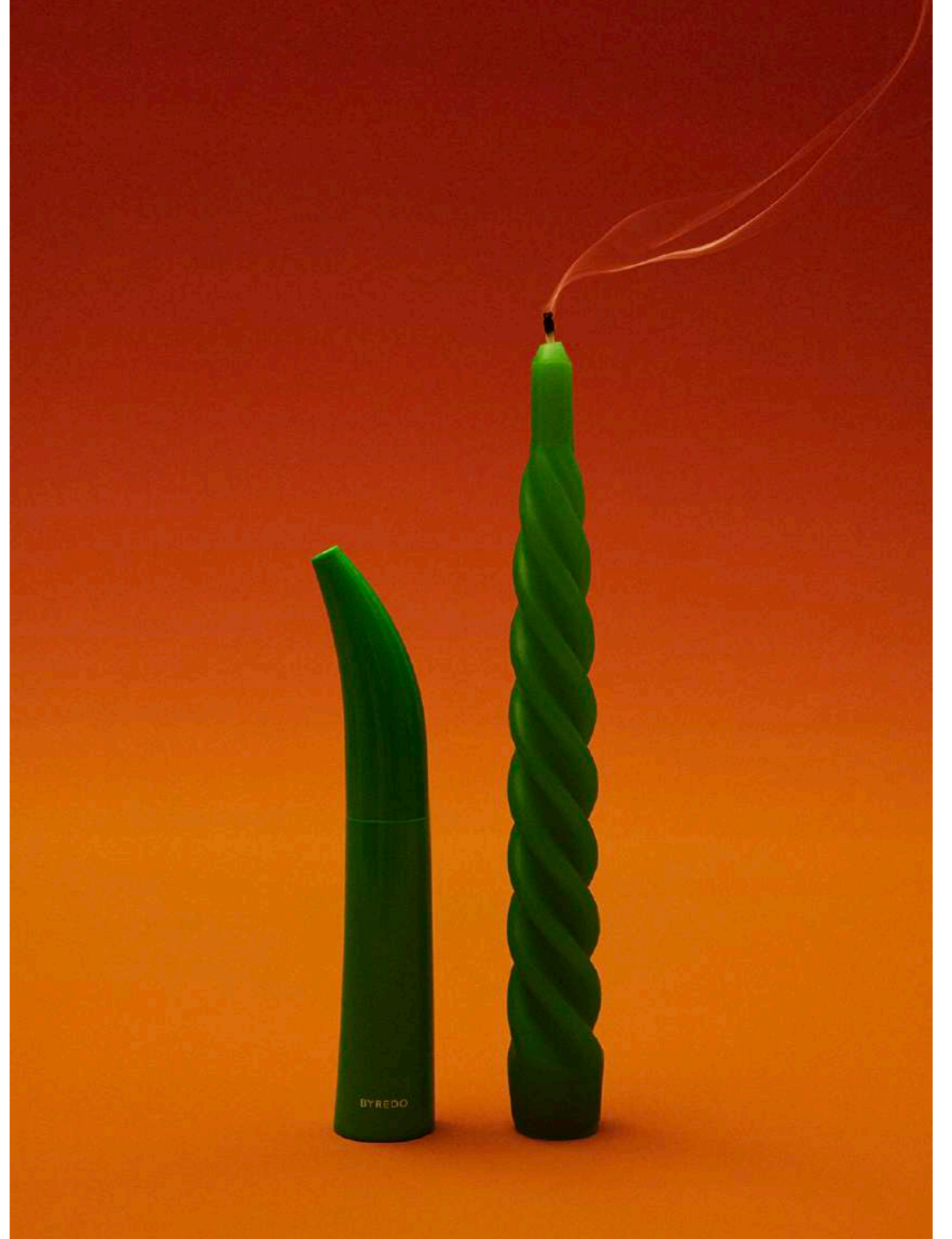


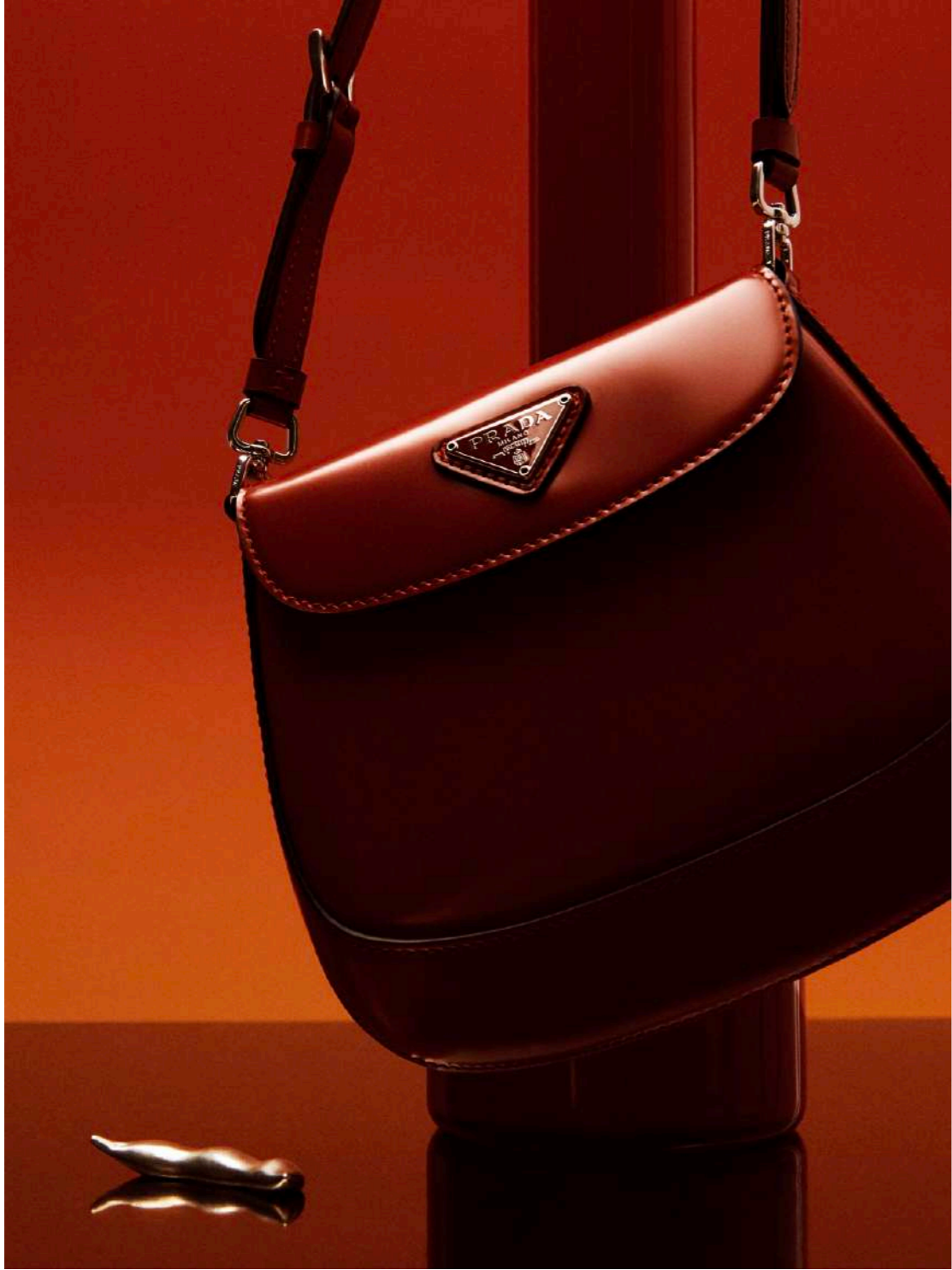




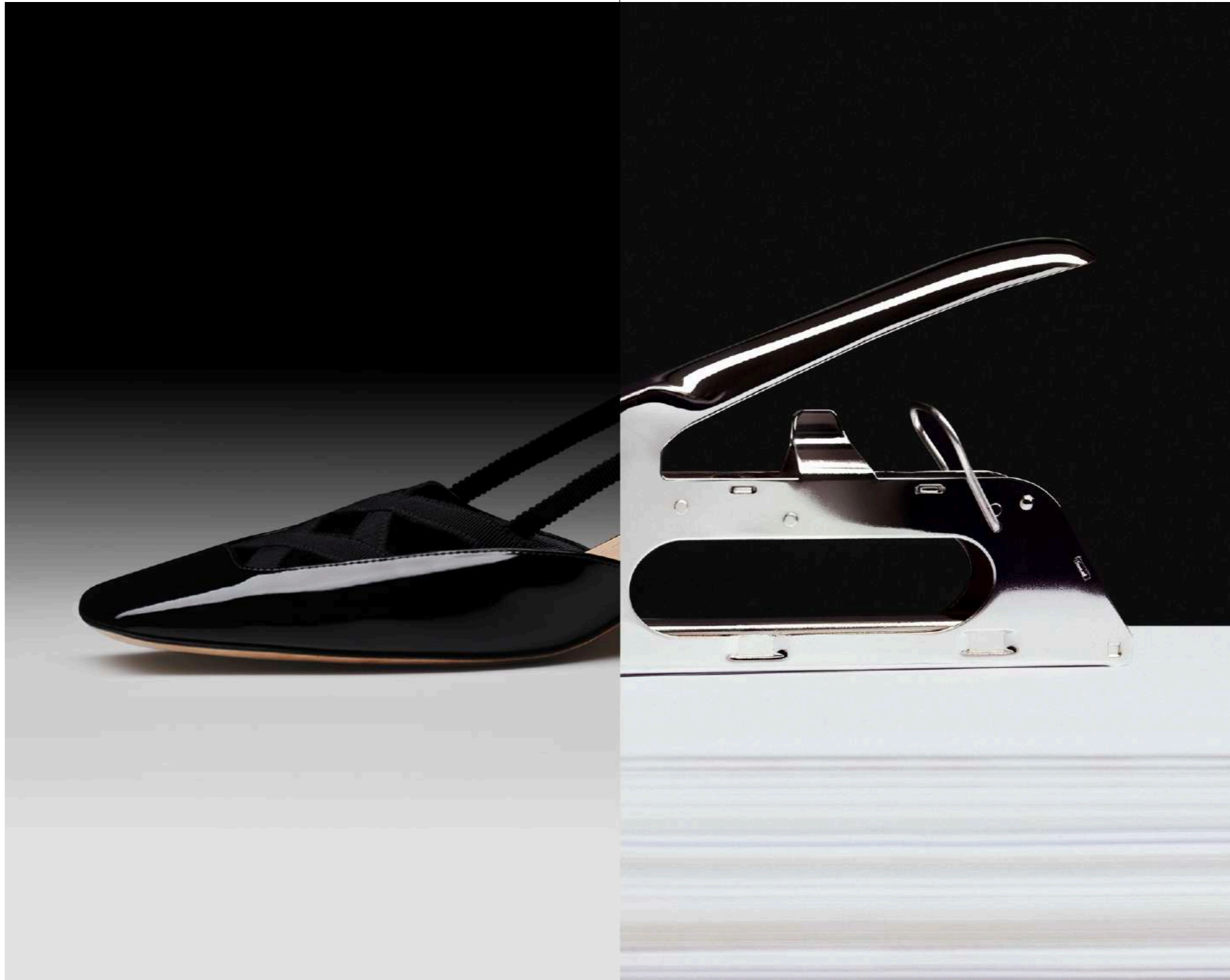






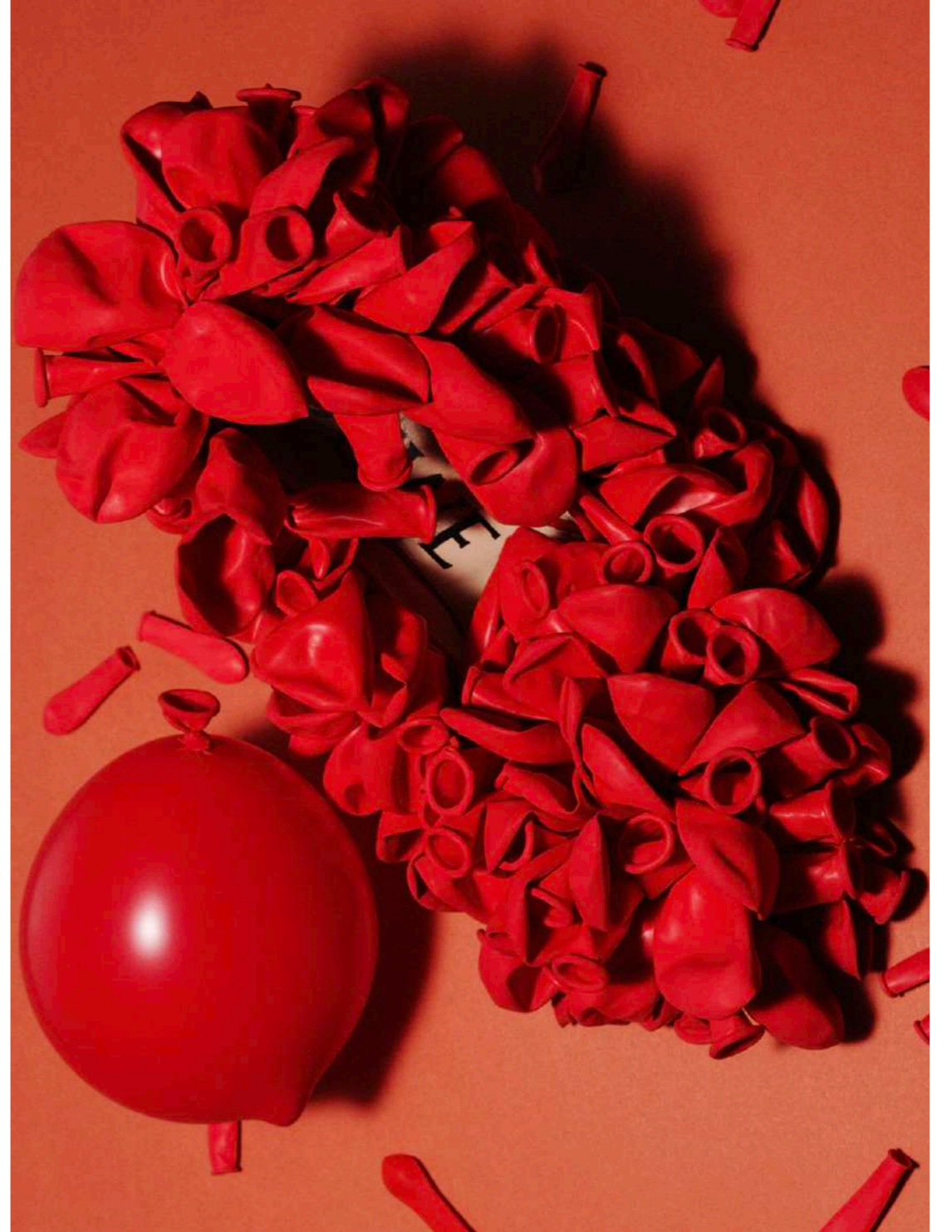
















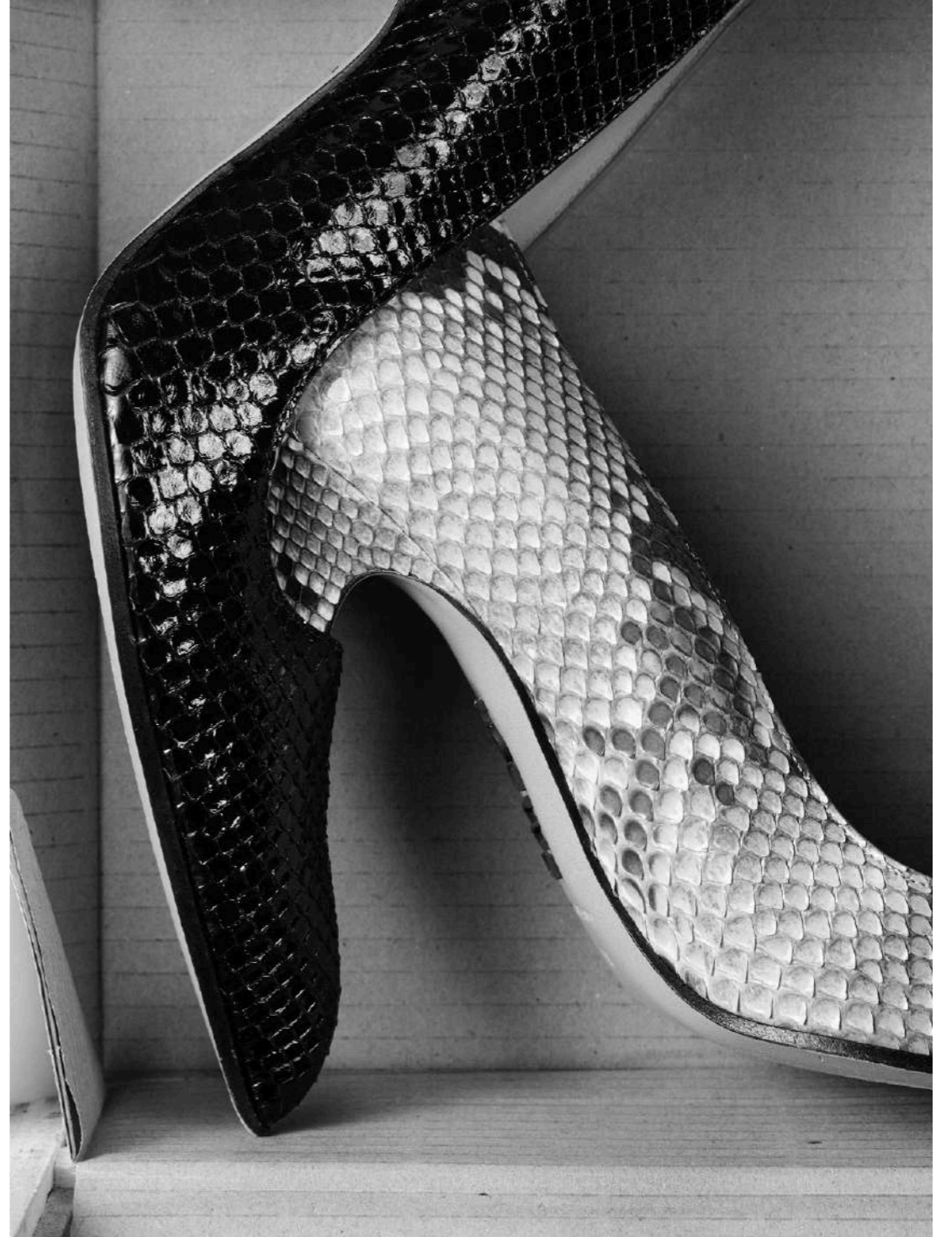
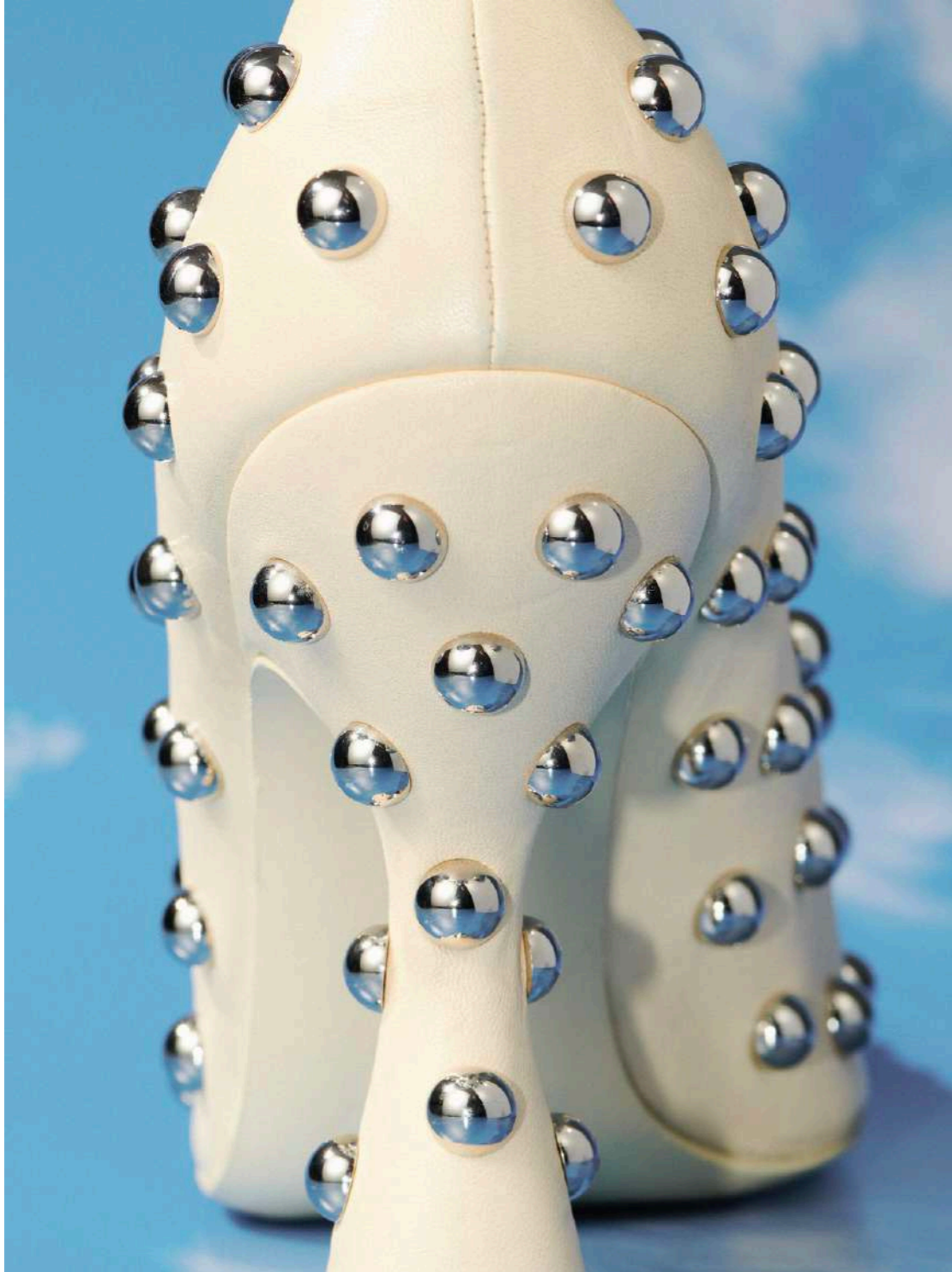




























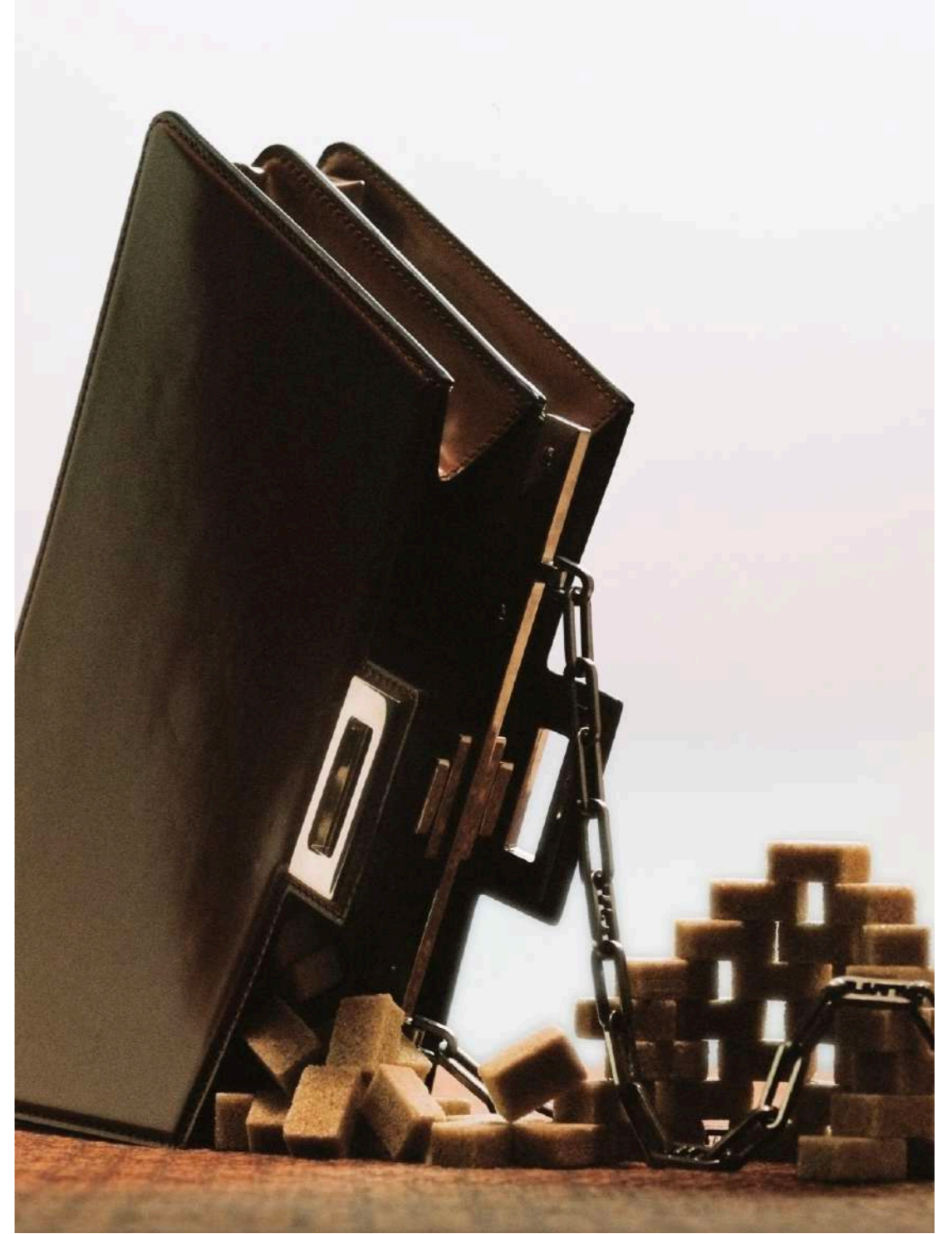




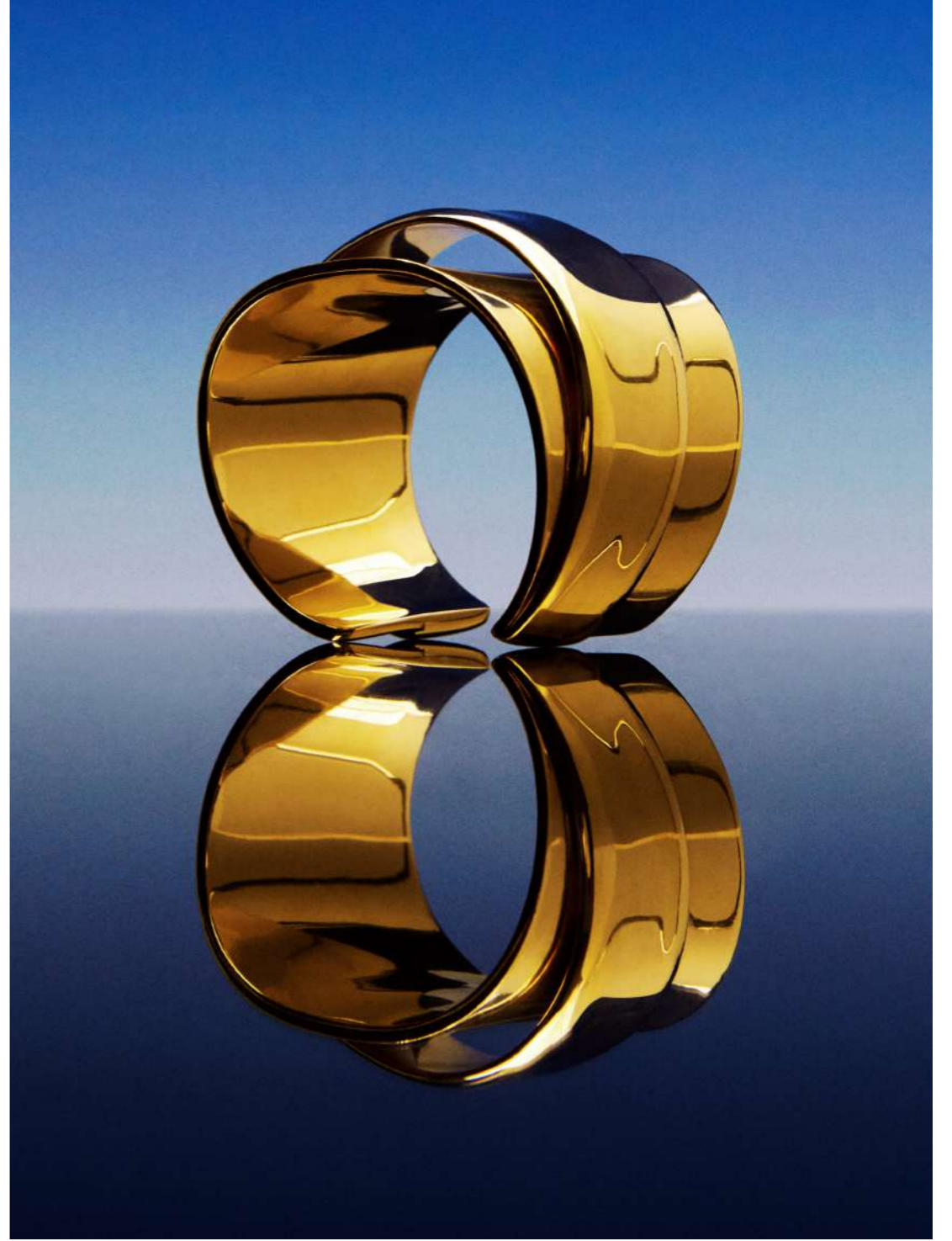








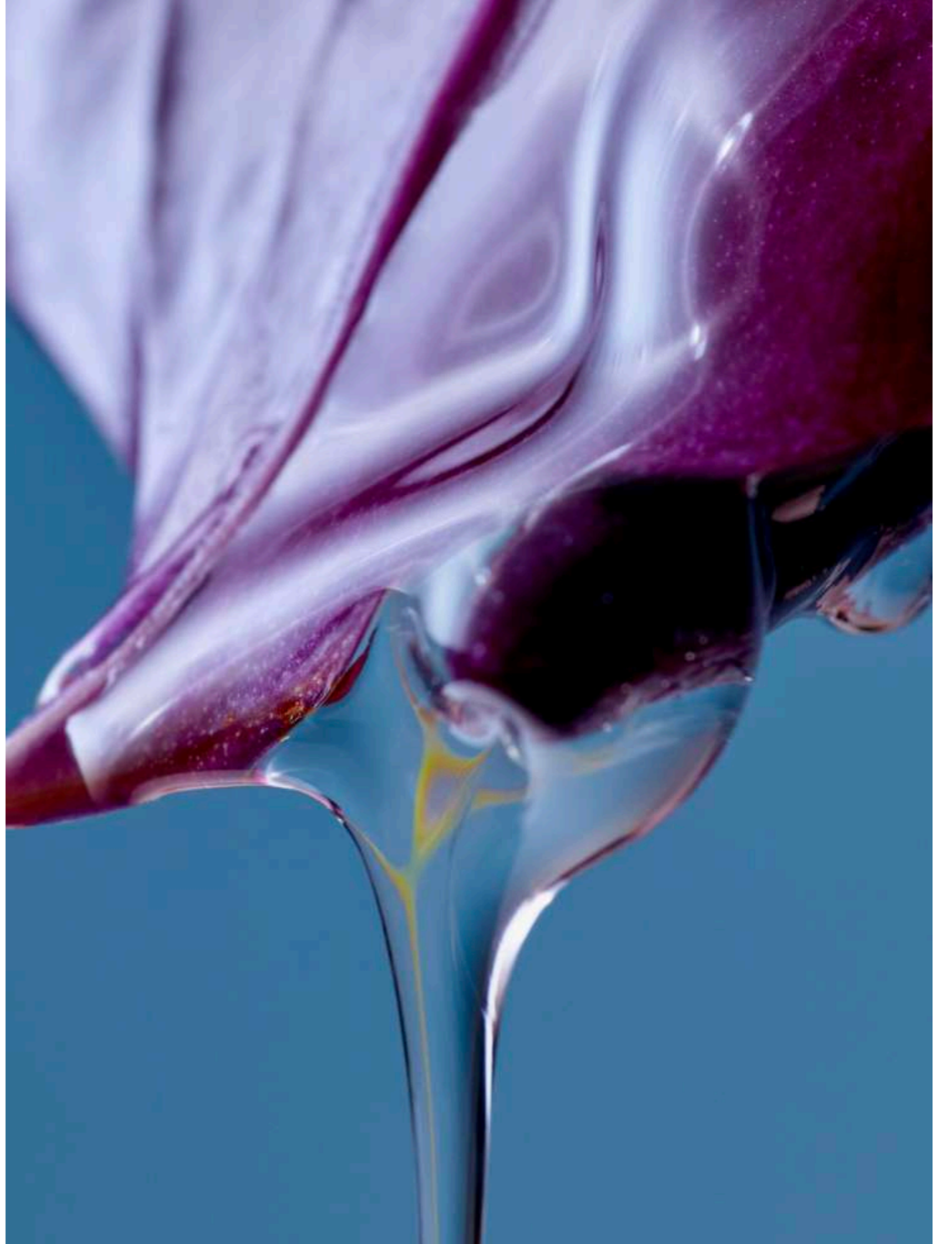






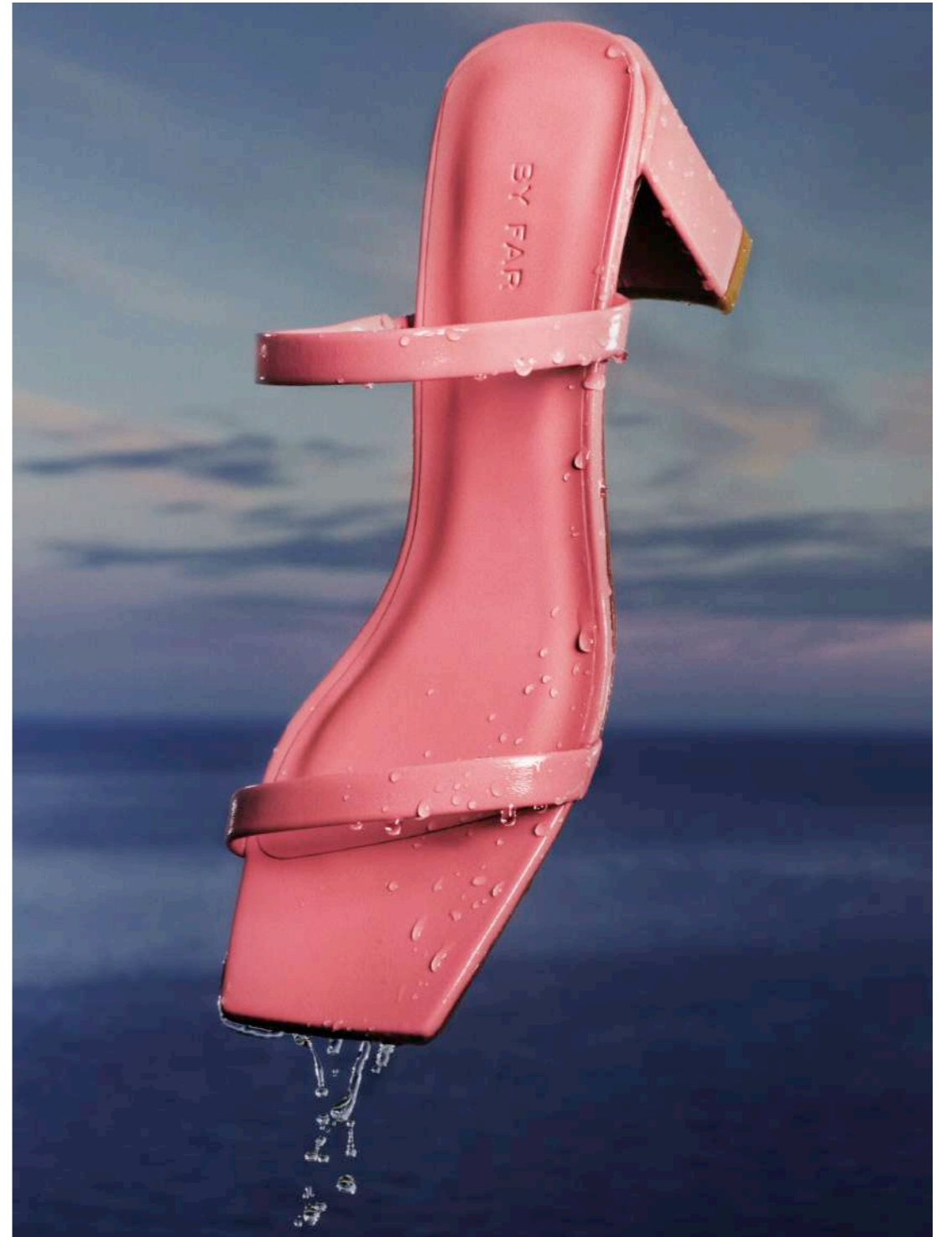


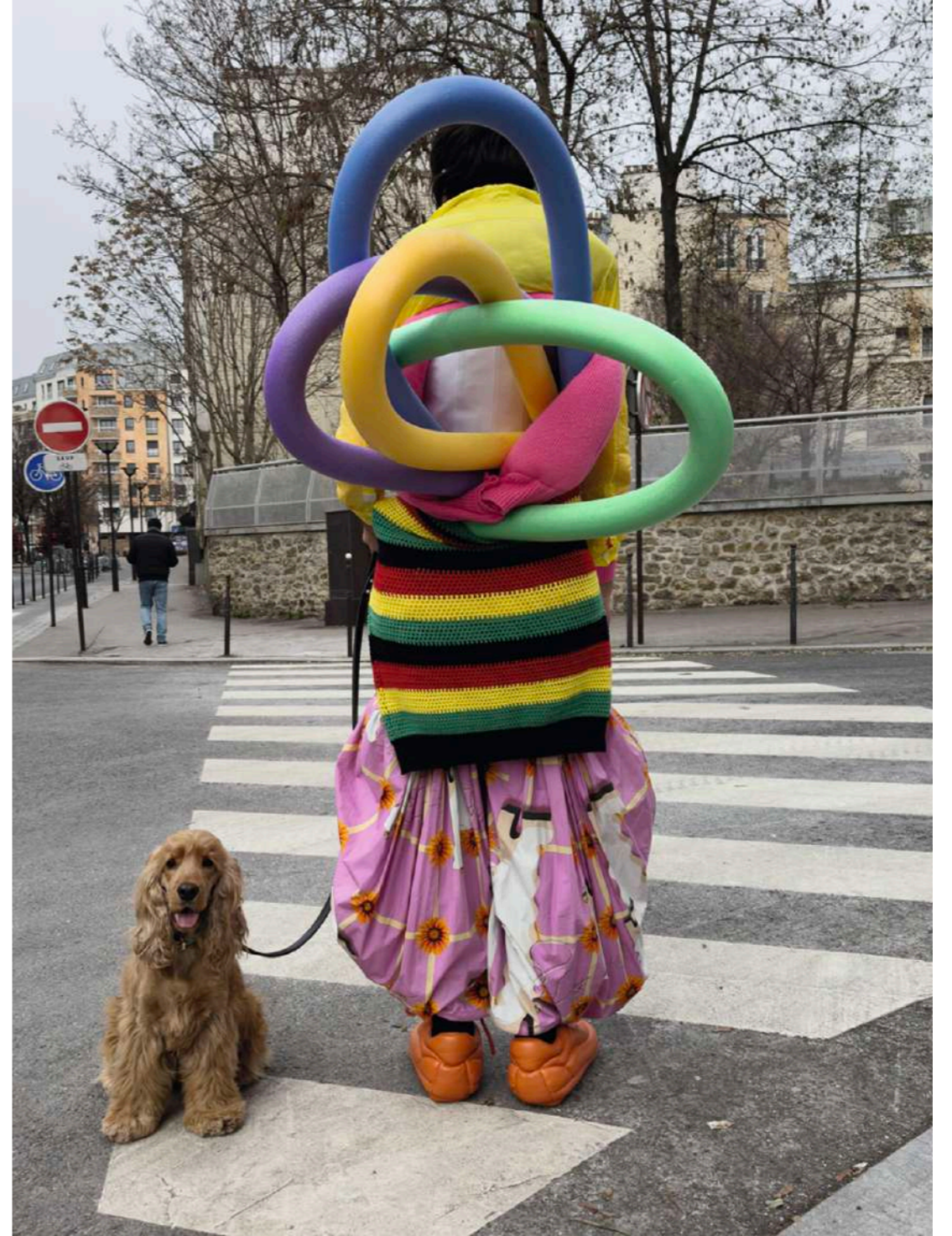












43, RUE DE DUNKERQUE
75010 PARIS

INFO@ANTHEMREP.COM
+33 (0) 1 40 34 73 98

INSTAGRAM

ÉMILIE FONTAINE
ÉMILIE@ANTHEMREP.COM
+33 (0) 6 47 82 18 67

EUGENIE CHEVALIER
EUGENIE@ANTHEMREP.COM
+33 (0) 6 50 26 53 50

ANTHEM
