

Singita

SERENGETI HOUSE

SERENGETI, TANZANIA

"A Singita experience leaves guests with a deeper understanding of the wonders of Africa, and an appreciation for our rare and magnificent wildlife."

**- LUKE BAILES
FOUNDER & EXECUTIVE CHAIRMAN**

Table of contents

AN ENDURING COMMITMENT TO safeguarding Africa's wildlife & wilderness

Singita is a conservation and ecotourism brand that has been helping to preserve Africa's untouched natural spaces for almost three decades and we offer guests exceptional safari experiences at 16 award-winning lodges and camps across four countries.

In partnership with non-profit Funds & Trusts who implement strategic conservation projects in each of the regions in which we operate, our 100-year purpose is to preserve and protect large parts of African wilderness for future generations.

We are steadfast in our commitment to protect unique ecosystems, help recover critically endangered species and ensure no further extinction, benefit neighbouring communities under our care, and contribute positively to the reduction of GHG emissions through our climate commitments.

Travellers choose to stay at Singita because of the expansive space and beauty of our remote locations. They value the restorative serenity of these pristine wilderness areas, as well as the limited guest and vehicle numbers, extraordinarily consistent game viewing and exceptional & intuitive care that is taken of each guest during their stay. When they depart, they are transformed for life and deeply moved by their connection and contribution to the legacy of this continent.



“Singita’s ethos of ‘touching the Earth lightly’ is no longer just a forward-thinking principle; it is imperative to our survival, and that of the land, wildlife and communities under our care.”

- INGE KOTZE
GENERAL MANAGER CONSERVATION



CONSERVATION as a way of life

Singita has been championing conservation in Africa from its inception.

The critical conservation work we carry out with our non-profit Funds & Trusts is aimed at restoring, enhancing and protecting the biodiversity of the ecosystems under our care. Our sustainable conservation model helps to balance tourism in all of the regions in which we operate.



THE GRUMETI FUND

In Tanzania, Singita partners with the Grumeti Fund, a non-profit organization carrying out wildlife conservation and community development work in the western corridor of the Serengeti ecosystem, where Singita Sabora Tented Camp is situated. The Grumeti Fund works tirelessly to ensure the long-term sustainability of the 350,000 acre Singita Grumeti and their vision is a world in which people and wildlife live together sustainably, forever.

WELCOME TO Singita Serengeti House

Refined yet luxuriously comfortable, this contemporary-African home on the slopes of Sasakwa Hill offers uninterrupted views across the Serengeti's open plains.

Designed for exclusive use, there's a sense of relaxed freedom for families or friends to enjoy shared experiences in nature here.

Casual, living spaces include an eat-in kitchen and media room, a full glass-walled fitness centre adjacent to the extended outdoor sala, and a tented spa suite at the updated tennis pavilion. A 25-metre lap pool, outdoor dining decks and fire pits provide intimate interactions with a busy water hole. Private staff, including a full-time Field Guide and dedicated vehicle, ensures an easy, flexible rhythm to each itinerary with tailor-made activities and meals.



The Serengeti House experience

ACCOMMODATION

- 2 x one-bedroom main house suites.
- 2 x one-bedroom garden suites.

ACTIVITIES

- Daily morning and afternoon game drives with your Field Guide. Afternoon drives conclude with an evening return revealing the elusive magic of nocturnal Africa.
- For the adventurers, there are guided safari walks (for guests 16 and over).
- Private tennis court available for use by guests.
- Balloon safaris (additional costs apply).
- Stargazing, bird watching, swimming and board games.
- A range of unique and mindfully curated experiences – from intimate wine tastings to cooking classes, meditation and yoga.
- Joining a community visit is the perfect way to experience Tanzanian culture and learn about the positive impact that tourism has made in the region.

A UNIQUE GAME-VIEWING EXPERIENCE

During your stay you are likely to see a great variety of wildlife, including:

- | | | | |
|-----------------|------------------|-----------|------------------|
| • bat-eared fox | • Colobus monkey | • gazelle | • Maasai giraffe |
| • buffalo | • eland | • leopard | • topi |
| • cheetah | • elephant | • lion | • wildebeest |





Preparing for your journey

SUGGESTED PACKING GUIDE

Cotton clothing in neutral colours such as green, khaki and grey is recommended for game drives and walking safaris. It is advisable to avoid white and dark colours as they tend to attract bugs. If it rains during a game drive, waterproof ponchos will be provided. No formal wear is required at any of our lodges.

Use the weather as your guide:

- **October – April:**
Casual summer clothing (shorts and lightweight shirts) with a warm jersey or sweater for the cooler morning and evening temperatures.
- **May – September:**
Casual lightweight clothing with a very warm parka or windbreaker jacket for the very cold mornings and nights.

To ensure a comfortable safari experience, we recommend that you bring the following:

- Comfortable walking or track shoes, or hiking boots for walks as well as sandals to wear around the lodge.
- Activewear if you plan on using the facilities at the fitness centre or your private in-room fitness area.
- A swimming costume or bathing suit, sun block, sun hat, sunglasses, lip balm, mosquito repellent. (Lip balm and insect repellent will be provided, but if you prefer a particular brand, you are welcome to bring it along.)
- Video camera, camera, binoculars and extra memory cards.

HEALTH REQUIREMENTS

Please consult your doctor or physician before travelling.

- Singita Serengeti House is situated in a malaria-risk area. It is therefore essential that you consult your medical practitioner regarding anti-malaria requirements prior to your trip.
- Vaccinations: Guests are strongly advised to check the latest information with regard to vaccinations for travel to Tanzania with their local travel clinic or travel agent.

Our location

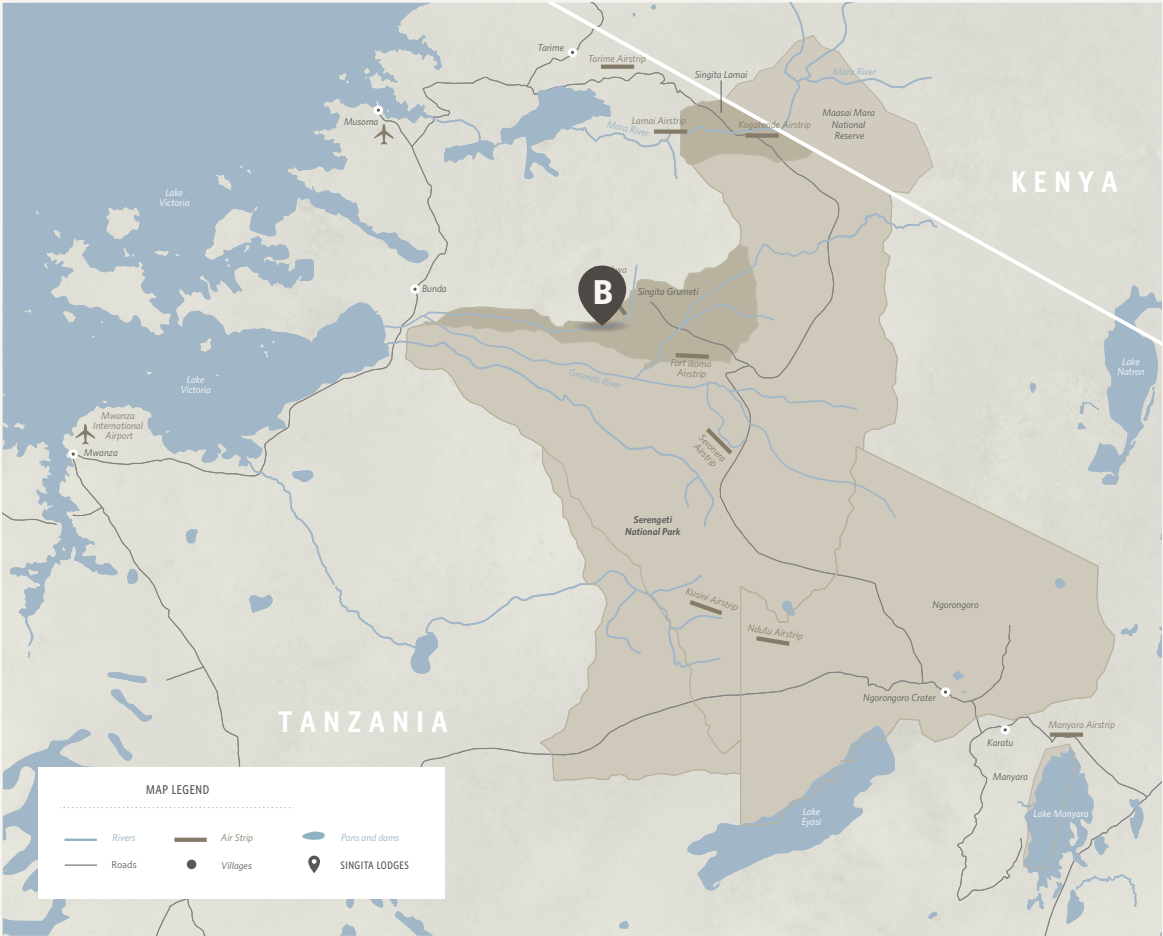


LOCATION OF SINGITA GRUMETI [A]

Spanning over 350,000 acres of untouched wilderness, Singita Grumeti is located in northern Tanzania, forming part of the Serengeti Mara ecosystem. Singita Grumeti offers visitors a front-row seat to the Great Migration as well as countless other wildlife experiences all year around. With a landscape that combines grassy plains with riverine forests and thorny scrubland, the area is home to a huge variety and vast number of big game and other iconic African animals.

LOCATION OF SINGITA SERENGETI HOUSE [B]

Singita Serengeti House is a welcoming exclusive-use retreat for families and friends offering private, carefree relaxation in a home-like atmosphere. Resting on the southeast slopes of Sasakwa Hill in the 350,000-acre Singita Grumeti Reserves, the house overlooks a watering hole frequented by a variety of animals throughout the day.



GETTING TO Singita Serengeti House

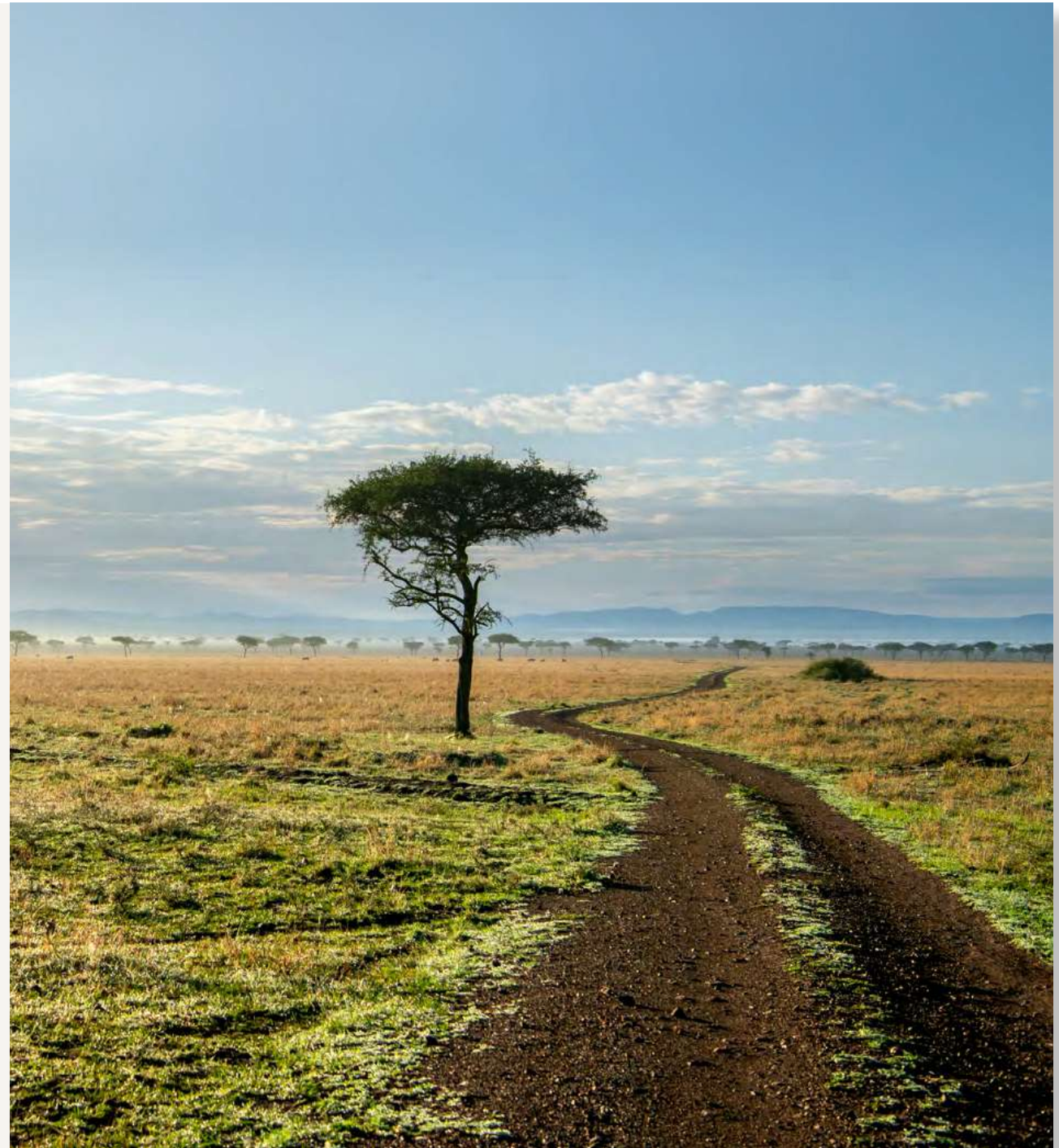
BY AIR

We can arrange scheduled flights or private charters. All flights land at the Singita Sasakwa airstrip in the Grumeti Reserve. For detailed information and bookings, please contact Singita Reservations.

- On scheduled flights, the weight of luggage is restricted to 15 kg (33 lb) for checked baggage.
- On arrival, guests are met by a Singita staff member and driven to Serengeti House.
- Private aircraft pilots land at their own risk and must adhere to strict aviation protocols.

FLIGHT DURATION

- Kilimanjaro International Airport – Singita: approximately 1 hour 15 minutes (if direct)
- Arusha Airport – Singita: approximately 1 hour (if direct)



A LUXURY EXPERIENCE in the heart of Africa

Every creature comfort is taken care of with these well-considered amenities and services:

- There is a 25m infinity swimming pool in front of the main house.
- The Singita Boutique & Gallery nearby Singita Sasakwa Lodge.
- Fully equipped fitness centre.
- Tennis court.
- Tented wellness suite.
- Each suite has a television.
- Dependent upon area coverage, there is mobile phone signal.
- Complementary WiFi internet is available.
Electricity/power available: 220V. Converters are also available and hair dryers are supplied in each suite.
- Children of all ages are welcome. There are tailor-made activities to suit each family. Children's participation in game activities is at the discretion of your guide.
- Please note that there are no Kosher or Halaal facilities available at Singita Serengeti House.





Weather and temperature

BEST TIME TO GO ON SAFARI

East Africa is equatorial, so the climate is fairly constant, making Singita Grumeti a perfect year-round destination. The Green Season, from November to May, offers long, warm days with short downpours of rain, which transforms the landscape into lush green grasslands teeming with diverse wildlife. June to October is traditionally the migration season, when the days are warm, sunny and dry.

AVERAGE SEASONAL TEMPERATURE RANGES

SPRING	SUMMER	AUTUMN	WINTER
(Sept - Nov)	(Dec - Feb)	(March - May)	(June - Aug)
Low 20 °C / 68 °F	Low 23 °C / 73 °F	Low 22 °C / 72 °F	Low 18 °C / 64 °F
High 30 °C / 86 °F	High 31 °C / 88 °F	High 31°C / 88 °F	High 29 °C / 84 °F

The above temperatures are monthly averages. The actual daily temperatures may differ from these.

The finer details

OUR TARIFFS INCLUDE

- Luxurious en-suite accommodation, breakfast, lunch and dinner daily, all drinks.
- Private game viewing vehicle, Field Guide, House host, chef and House staff.
- Game drives accompanied by an experienced guide.
- Laundry and valet services.
- Road transfers to and from Singita airstrip.
- Telephone calls.

OUR TARIFFS EXCLUDE

- Air transfers to and from the lodge.
- Transport to and from Singita Grumeti. Please see our flights & access documentation.
- Any day trips or transfers from Singita Grumeti into Serengeti National Park.
- Massage treatments.
- Certain special meal requests.
- Purchases from the Singita Boutique & Gallery.
- Wildlife or park fees.
- Tourism Development Levy.

CHECK-IN/CHECK-OUT TIMES AND LODGE CLOSURE

- The lodge is open year-round.
- Check-in time: 14h00.
- Check-out time: 11h00.
- Please note that guests wishing to check in before 14h00 and/or checking out after 11h00 are required to book an additional night at the Day Use Rate

PAYMENT OPTIONS

Visa, MasterCard and American Express cards accepted.



Whether standing in awe of the Great Migration, experiencing the African wilderness with loved ones or finding relief and escape from everyday life, this epic landscape and the astonishing diversity of animals within it will leave you humbled and restored.





Tel +27 21 683 3424
enquiries@singita.com
www.singita.com

Lodges and Camps across 4 countries in Africa

SOUTH AFRICA

Kruger National Park: Singita Lebombo and Sweni Lodges

Sabi Sand: Singita Castleton, Boulders and Ebony Lodges

TANZANIA

Grumeti: Singita Sasakwa Lodge, Sabora Tented Camp, Faru Faru Lodge, Serengeti House, Milele and Explore

Lamai: Singita Mara River Tented Camp

ZIMBABWE

Malilangwe Wildlife Reserve:
Singita Pamushana Lodge and Malilangwe House

RWANDA

Volcanoes National Park:
Singita Kwitonda Lodge and Kataza House