

# DYWIDAG Smart Temp

CRT MONITOR







## DYWIDAG Smart Temp

Smart Temp is an innovative automated critical rail temperature monitoring system.

The Smart Temp provides Permanent Way Managers with constantly updated rail temperature data allowing them to anticipate potential failures, avoid unnecessary speed restrictions and minimize the time spent working on or near the line.

The Smart Temp is a sustainable cable-free and compact monitoring system. It has a GPS locator housed within a portable and durable enclosure.

It is fitted to the rail foot in under 60 seconds via an easy-fit locking mechanism whilst an in-built solar panel provides power to recharge a 22Ah internal battery meaning it may never need re-charging once in the field.

Smart Temp continuously records rail temperatures from -55°C to +125°C and can be remotely programmed to send limit alarms to any number of recipients by SMS, email or direct communication via DYWIDAG's Control Centre in Manchester.

Data is streamed to DYWIDAG's secure website Infrastructure Intelligence and can be accessed from anywhere in the world via smartphones, tablet or computer.

Smart Temp is fully interactive and has been designed in conjunction with Network Rail Permanent Way Engineers as a Critical Rail Temperature (CRT) management system project.

### Key Features

- Single action dual purpose "carry-clamp"
- Designed for the rail environment
- Compact and portable
- Rapid easy-fit locking mechanism and anti-tamper option
- Simple to install
- Built-in multi network communications platform
- Auto non-contact off/on switch
- Interactive web-view of data on Infrastructure Intelligence
- Multiple and variable alarm limits, communicated online, by SMS or email to technical support

### Key Advantages

- Removes the need for manual on track measurements
- Optimizes resource management
- Reliability, accuracy and repeatability
- Rapid response to changeable weather systems
- Continuously measures track temperature
- Remotely controlled and programmable
- Innovative and state-of-the art communications platform

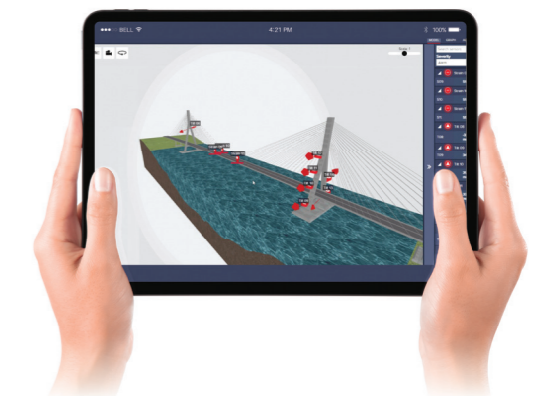
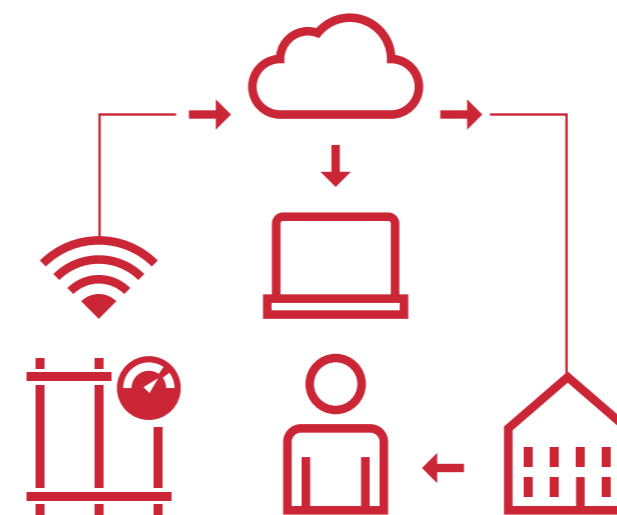


## Infrastructure Intelligence

Infrastructure Intelligence is a secure software application developed by DYWIDAG. It complements all of DYWIDAG's services and products providing a powerful data management and presentation solution. The user interface provides concise presentation of complex data.

### Example Features

- Interactive map view of all sites or projects
- Customizable layout options to view sensors at site
- Interactive graphing engine
- Configurable alerts to be sent via email or text
- Complete control of users and user groups
- Security features from Microsoft Azure





## GET IN TOUCH

---

### OUR HEAD OFFICE

Datum House, The Pavilions, Bridge Hall Lane, Bury, Lancashire, BL9 7NX

### CALL US

+44 161 797 5511

### EMAIL US

[sales.uk@dywidag.com](mailto:sales.uk@dywidag.com)

### FOLLOW US

 [@DYWIDAG](#)

 [@DywidagSystems](#)