



twahamwe

MOTT

Twahamwe is Swahili for "we are all one"

volume XXIX

number 6

Dec 2017

Miners Memorial Monument



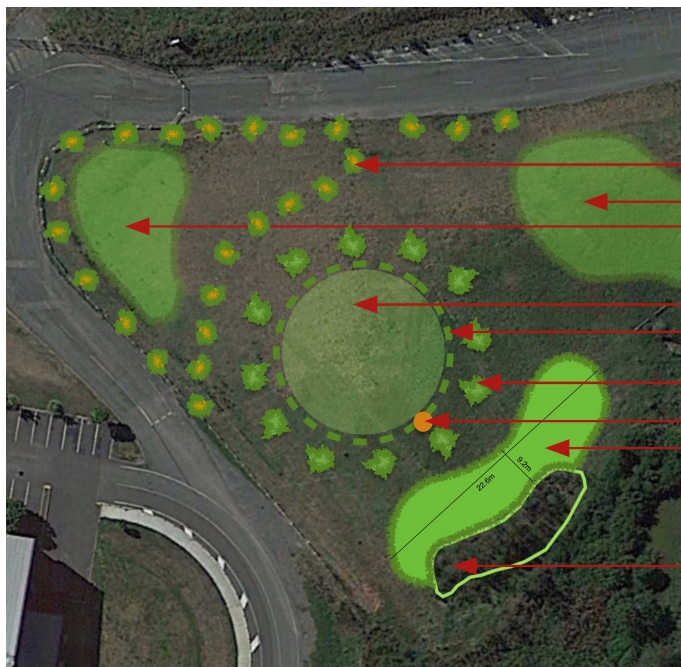
The MOTTly Crew standing among the Core Samples at the opening day of the State Miners Memorial are L - R; Scott, Jean, Jerry, Marion, Jan, Fran, Pat and Gary

After a few false starts and three changes of government MOTT dug in when it was needed.

Coordinating the volunteer community planting day at Redbank finally came to fruition on Sunday 13 August 2017.

John Donovan a veteran Ipswich tree planter and MOTT member designed the tree planting as a strategy to act as a flood mitigation to protect the memorial, form a backdrop to the site and enhance the existing planting that was established 10 years earlier.

Four hectares of site planting zones drawn up by Scott



Site Planting Plan

MMM Proposed Plantings
 As per MOTT report dated 26 May 2017

24 ICC street plantings

probably *Harpullia pendula*

Proposed future community plantings

at a date to be determined

with ICC and local catchment groups

Turfed area

Garden beds

either ICC or subcontractor to prepare

as per site layout plan dated 30 MAY

12x *Agathis robusta*

supplied by Care Transplanters

Core Sample Slab

Community planting site

on Sunday 13 August

Any assistance from ICC with marquees, tea, coffee facilities for this free, open to the public, event would be appreciated.

Any public awareness campaign generated by ICC marketing department would also be of benefit to local attendance and participation.

Existing planting



NOT TO SCALE: approximate layout only

DRAWN Scott Maxwell 31 May 2017

the right tree ~ in the right place ~ for the right reason

the Guru's birthday planting



at MOTT's community volunteer day

The Guru's birthday planting coincided with MOTT's large scale planting at Redbank

The Guru's Annual Birthday Planting was organised for our Indian friends from Dera Sacha Sauda (the organisation) to help plant 1000 trees and understory plants. The layout grid was systematically planned by John Donovan MOTT member and local to Redbank who has been involved with many Ipswich plantings over the past 30 years.

The event was held on Sunday 13th August (Guru's birthday is the 15th August) opposite Redbank Plaza to form a naturalistic backdrop for the State Miners Memorial designed by artist (and MOTT Vice President) Scott Maxwell.



Turning the sod; DSS member with Acting Mayor Paul Tully with Scott, Lin and Ish



Dera Sacha Sauda members of all ages planting trees while being recorded by the State Gov Promotional Unit



Marion leading the way by showing the ladies from DSS how to widen the holes

the right tree ~ in the right place ~ for the right reason



Proposal for Complementary Native Tree Planting Miners Memorial Monument - Redbank - 13 August 2017



Marion, Jerry, Fran, Scott and the ducks assessing the proposed site at the Pan Pacific Peace Gardens back in February 2015



Preparation Day involved digging the holes and spreading the mulch
L - R; Jerry, Jean, Steven, Marion, Lin, John and Ishara



MOTT Site Inspection with coordinator John Donovan wearing the hat

MOTT Management Committee inspecting the Endeavour Nursery for native plants at Riverview
From left to right:
Scott Maxwell
Gerry Dunford
Marion
Yanyu Lin
Jean Shipway
Fran Gilje

Site description

The area is low lying, subject to flooding, and adjacent to Goodna Creek. The site itself forms a 'kidney shape' of approximately 60 Metres X 10 Metres around the existing garden.

Proposed Design For Site.

The planting would consist of 30 large trees spaced approximately 5 metres apart, so as not to impede water flow, and allow space for the trees to mature. The species would be natives consistent with fresh water wetlands. An understory of small native shrubs, sedges, and rushes, would be planted in clumps, both for ease of maintenance, as well as to allow debris and water to pass in time of high water flow. An additional border of Lomandra would delineate the external border of the site.

Proposed Site Preparation

The present couch grass lawn across the area would be 'sprayed out' and then mulched to a depth of 100mm to 150mm. The site will be marked out, and holes bored, before planting is to take place in August 2017

Tree Species

Lophostemon suaveolens
Eucalyptus robusta + Eucalyptus tereticornis
Angophora subvelutina
Casuarina cunninghamiana
Melaleuca bracteata + Melaleuca quinquenervia

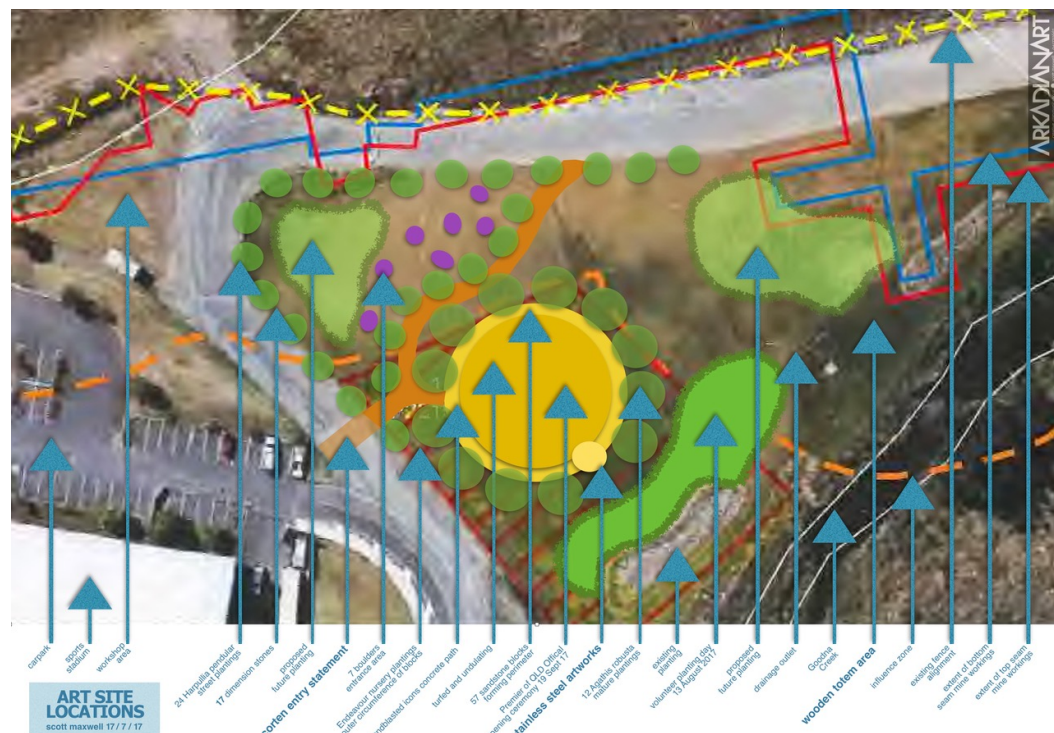
Species of Small Shrubs and Trees

Leptospermum liversidgei + Leptospermum polygalifolium
Crinum pedunculatum
Melaleuca pachyphylla + Melaleuca thymifolia
+ Melaleuca irbyana

Species of Sedges and Rushes

Juncus usitatus
Ficinia nodosa (Knobby Club Rush)
Carex appressa + Carex fascicularis
Cyperus exaltatus
Gahnia clarkei
Cyperus haspan

ABOVE: Proposal
BELOW: Site plan



John and Scott combine their efforts in testing out the brand new post hole digger donated especially for the community volunteer planting day

the right tree ~ in the right place ~ for the right reason



A Blast from the Past

images above and below

Ngairetta Brennan AM, (past President of MOTT for 19 years) received these photos from an old friend, Judith Hancock (Head of Girls Grammar for 25 years). Her husband, David was a member of MOTT for quite a few years. Judith tells the story of daily walking her dog along this neck of the woods near Northey Street City Farm.

It was designed by our Vice President, Scott Maxwell, to celebrate the Centenary of Australia and was opened by the then Premier of Queensland Peter Beattie.

It is officially named 'The Bowen Bridge Heritage Track' and was a series of big MOTT plantings back in 2001. This was once a barren, grassy open space is now a forest complimented with artworks and interpretive signage.

We must visit the site again soon so that we can introduce it to our more recent members and volunteers.



Christmas Luncheon at Cafe Lagarto near Samford

Cec Shipway is on the end in front of the camera, Danya Jassim, Natalie Mason, jim Dale, Cr. Steve Toomey, Pat Peek, Rhonda Ridley, Christine Marsh, Gary Marsh, Ishara Udawela, Peter Amabile, Lawrence Robertson, Jan Mealy, Ray Casten, Marion Goward, Fran Gilje, Gerry Dunford, Jean Shipway.

Pat Peek was the MC of the day, and he read out your Christmas Wishes and message to the group - which always cheers us on. Thanks for that Pat.



I just had to share this with you all especially after our day of planting birdwing vines on Saturday...

My husband and I went to visit Maroochy bushland botanical gardens near Buderim (sunny coast) on Tuesday. As we were meandering through one of the walks we looked up and there she was in all her glory. A female Richmond Birdwing Butterfly.

I have attached some photos. The surprising thing I was told was that they only planted some vines a few years ago and 4 birdwings have been regularly seen in that patch for around a year now.

The vines were not that big. It just goes to show that no matter how small and insignificant an effort one may think we make, the impact could actually be astounding.

story by Ishara Udawela

the right tree ~ in the right place ~ for the right reason

MOTT management meeting 10 June at Fran's place



As usual, lots of tea, coffee and homemade cakes and biscuits helped to fuel the topics for discussion, which included; participation in a PR display at PPNN for National Tree Day, new sites with Brisbane Habitat, upcoming seminars, community conservation partnership programs, restoration celebrations, working bees, seed collection and the logistics for big planting day at Redbank for the State Government's Miners Memorial.

L - R; Jan, Jerry, Marion, Fran, Jean, John, Gary with Tilli having a rest under Scott's seat. Sadly, this was the last photo of Tilli as she died 3 weeks later at the grand old age of 17.



Greg Gage at TED2017

Electrical experiments with plants that count and communicate

Click on this link for this remarkable Ted Talk; https://www.ted.com/talks/greg_gage_electrical_experiments_with_plants_that_count_and_communicate?utm_source=newsletter_weekly_2017-10-14&utm_campaign=newsletter_weekly&utm_medium=email&utm_content=talk_of_the_week_button



It is believed that Captain Cook drew this Norfolk Pine when he mapped Emily Bay area in 1744.



Greetings from the International Tree Foundation

- we recently launched our centenary campaign: 20 Million Trees for Kenya's Forests <http://internationaltreefoundation.org/20milliontrees/> which is about honouring our origins and of course doing something practical to help restore tree cover in Kenya.

- I think it would be fitting if one or all of the groups in Australia could get involved in the campaign (I am also contacting Men of the Trees WA and Trees for Life).

I am also wondering if there would be interest in organising a gathering at Muguga in Kenya on 22 July 1922 to celebrate the centenary of the Dance of the Trees and the founding of Watu wa Miti?

Perhaps we could arrange a Skype call soon?

Andy Egan Chief Executive
International Tree Foundation

Mayfield House 256 Banbury Road
Oxford OX2 7DE



WE ARE THE
WORLD'S OLDEST
continuous volunteer
incorporated non profit
tree planting organisation

~ the right tree
~ in the right place
~ for the right reason

PLEASE JOIN US
info@mottqld.com.au
MARION ~ 3366 1448
SCOTT ~ 041 7711667

FOUNDER: THE LATE DR RICHARD ST BARBE BAKER OBE
PATRON: HRH THE PRINCE OF WALES

the right tree ~ in the right place ~ for the right reason



2000 year old tree

**A sojourn into Mexico
by Rex Callahan**

As part of our tour of Mexico we were in the city of Oaxaca and we went out to the town of Santa Maria del Tule. On a former sacred site, later taken over by the Church, stands what is claimed to be the world's oldest tree, El Árbol de Tule (The Tree of Tule).

The tree is a Montezuma cypress and has the stoutest trunk of any tree in the world. In 2005, its trunk had a circumference of 42 metres (138 feet). The height is approximately 35 metres (116 feet) and, according to the sign nearby, it has a total volume of 817 square metres and a weight of 701 short tons, but these figures have not been independently verified.

The tree is so large that it was originally thought to be multiple trees but DNA tests have proven it to be one tree.

The age is, in fact, unknown, with estimates ranging from 1,200 and 3,000 years and there is even one claim of 6,000 years; the best scientific estimate, based on growth rates, is 1,433-1,600 years. Local Zapotec legend claims that it was planted about 1,400 years ago by Pecocho, a priest of Ehecatl, the Aztec wind god.

Local school children give tourists tours of this "Tree of Life", so called because of the images of the various animals that are reputedly visible in the gnarled trunk. They point out the jaguars and elephants that can be seen ... with a little imagination.

In 1990, it was reported that the tree was slowly dying because its roots have been damaged by water shortages, pollution and traffic, with around 8,000 cars daily on a nearby highway, and

in 2001, it was put on a UNESCO list of World Heritage Site.

Nearby stands its "son" but he is a yet a youngster at a mere 1,000 years.



A Presentation about Richard St Barbe Baker and 'Men Of The Trees' Organisations - at Peakhurst Garden Club Sydney.



In Early January 2017 Ann Marie Barnes, (Granddaughter of Richard St Barbe Baker) was invited by the Secretary of the Peakhurst Garden Club to attend their monthly meeting held on Friday 3rd February 2017.

The main aim was to talk about the Founder of the organisation 'Men Of The Trees' to around approximately 50 members. Many of the members were very enthusiastic to ask questions about Richard St Barbe Baker, 'Men Of The Trees' groups in Australia and the 'International Tree Foundation' and the various projects which are currently

being undertaken in a number of countries around the world.

At the end of the presentation Ann Marie was presented with a beautiful thank you card and \$50 donation to help with the running of the website www.themanofthetrees.com which makes available a free e-book "My Life, My Trees".



courtesy of Ann Marie Barnes

the right tree ~ in the right place ~ for the right reason



MOTT attended the Voluntary Conservation Programs End of Year Workshop organised by Morton Bay regional council. We cleaned up with a couple of door prizes, two beautiful books and a nest box. Thanks MBRC for a great morning



Planting of native grasses at Parkview Drive, The Gap on 28.10.17

Organised by Kerry Walker and assisted with site preparation by our BCC Habitat Brisbane Bushcare Officer, Simon Fox.



Jean Shipway working at Arbor Street Park, Ferny Grove with a broken arm, to put out trees for planting along the railway fence on 25.11.17. The pictures says it all



Kerry and Jerry with Natalie and Danya Environmental Management students at UQ



Jerry and John working from dawn to dusk watering the newly planted trees at Redbank in readiness for the opening of the Miners Memorial



**Fran and Brad relive old memories
... even after 20 years they never stop laughing**

Brad Jeffers started working with MOTT when he was 12 years old after school, and became the native plant ID consultant for Ashgrove, The Gap and beyond. He came upon us accidentally, and stayed to work with us. Good to see him come back!

the right tree ~ in the right place ~ for the right reason

SEED COLLECTING

Gerry and Ish collecting seed Poison Peach along Enoggera Creek, Payne Road, The Gap.



Seven MOTT representatives attended the MBRC Voluntary Conservation Program

On the 2nd December 2017, an end of Year Workshop to commend the conservation work achieved by Bushcare, Land for Wildlife, Backyards for Wildlife, and Voluntary Conservation Agreement participants.

Before the presentations in the Samford Bowls Club hall, a guided walk was given through the Samford Eco-corridor along Samford Creek. Gary Marsh and I joined a group led by Peter Storrer. The Eco-corridor is showing impressive growth. MOTT took part in at least two plantings towards this project. The photo is of Peter Storrer addressing the group - Gary Marsh is to the right.



Quantity Surveyor Yanxiu Lin assembled the donated auger ready for MOTTly Crew members Scott and John to tackle the Queensland Miners Memorial Planting Day.



VOLUNTEER DAY DISCARDS

MOTT treasurer Jan Mealy keeping an eye on the used pots collected by the children of Dera Sacha Sauda.

Habitat Brisbane Site nicely prepared by BCC Bushcare Officer, Simon Fox out at Keryn Place Park, Keperra.

L - R; John Donovan, Gary Marsh, Gerry Dunford, Jean Shipway, Kerry Walker, Simon Fox, Ray Casten



Robert White's Spiders

On the 25.6.17 some MOTTs attended the launch of a very interesting book entitled 'A Field Guide to Spiders of Australia' by Robert White and Greg Anderson. Robert White, one of the co-authors, is a leading light of the SOWN Scheme, and was at Walton Bridge Reserve (The Gap) for the launch, and to sign purchased copies. It is an excellent book, I think it will get a lot of people excited about spiders.

L - R; Danya Jassim, Natalie Mason, Robert White, Pat Peek, Ishara Udawela and Marion Goward.

the right tree ~ in the right place ~ for the right reason

MOTT's NURSERY WORK



On the fourth Saturday of each month, the MOTT group works at the PPNN in Paten Park, Paten Road, The Gap. The work involves whatever the requirement may be at the time - pricking-out, potting-on, tube washing, also seed-cleaning, weeding, watering, etc. A very nostalgic activity for some of us, who did the same, in the same place, when the nursery was MOTT's, 20 years ago.

The house is still officially named Twahamwe Cottage, and a large bark painting of the founder of MOTT, Richard St Barbe Baker, still hangs in the central position on the wall.

On the first Wednesday and the third Sunday of each month MOTT and the PPNN now get together to go on seed collecting expeditions. So far we have had some enjoyable and fruitful days in such places as Closeburn, Mt Coot-tha, and an idyllic property high up in the Lacey's Creek catchment, surrounded by the D'Aguilar National Park. These are the days when one can breathe the purest oxygen, and get closest to forests that still exist and hopefully always will.

~ please join our group ~

...the right tree ...in the right place ...for the right reason



Pat Peek - Membership Secretary
Please pay directly into the following account:

MOTT QLD inc

BSB: 124007

Account number: 93057245

or send cheque to: **MOTT QLD inc** PO Box 283 Clayfield QLD 4011

1 MAY 2017 - 30 APRIL 2018

ANNUAL MEMBERSHIP

active planter: \$10 / concession: \$15 / individual: \$25 / family: \$45 / corporate: \$100

If you are not renewing membership kindly cross the box and return slip to above address

name: _____

address: _____

email: _____

Your valued support enables MOTT to continue the vital role of tree planting

we acknowledge our dedicated sponsors



Manufacturers and suppliers of premium quality
caskets, coffins and funeral accessories



Dedicated to a better Brisbane



TWAHAMWE ~ biannual newsletter

Vol XXXIX No 7 Dec 2017

If undelivered please return to

PO BOX 283 CLAYFIELD QLD 4011

PRINTPOST APPROVED PP 434810/0002



SURFACE MAIL

**POSTAGE
PAID
AUSTRALIA**

the right tree ~ in the right place ~ for the right reason