



MEN OF THE TREES

TWAHAMWE

The official publication of THE MEN OF THE TREES Inc., Queensland Branch

Patron: The Prince of Wales

Founder: The late Dr. Richard St Barba Baker O.B.E.

TWAHAMWE IS SWAHILI FOR ALL TOGETHER or PULL TOGETHER

TELEPHONE (07) 3851 0858

PO Box 283 CLAYFIELD QLD 4011

www.menofthetrees.org.au

Volume XXXIV

Number 1

March 2013

KEITH FORDYCE.

Sad to report that Keith Fordyce passed away on December 2nd, less than two weeks after his 92nd birthday.

Keith was an active member of MOTT from 1966 until his health forced him to retire two years ago at the age of 90.

Keith was born in Cairns but moved to Brisbane as a child and grew up at Breakfast Creek. After leaving school, his first job was with the PMG (now Telstra).



Keith Fordyce

Keith took an exam to become a clerk in the Qld. Railways. He went on to clean trains until he moved on to be a driver. And it was he who, in November 1978, handed the controls over to Joh Bjelke Peterson when the first train crossed the new Merivale Bridge.

Later, Keith became involved in the AFULE, The Australian Federated Union of Locomotive Enginemen, first as treasurer and later he became union president, a position he held for 14 years until he retired in 1982.

CHRISTMAS BREAKUP

Our Christmas breakup was held at Pat Peek's house on December 15th and was quite an exciting event!

Apart from the relaxed and friendly atmosphere that accompanies most of our MOTT gatherings, this had the added excitement of the entire MOTT team almost being incinerated by Pat's barbeque.

When Pat lit the barbeque, it turned out that the gas connection wasn't quite (connected, that is) and it turned into a flame thrower that had the team scattering.

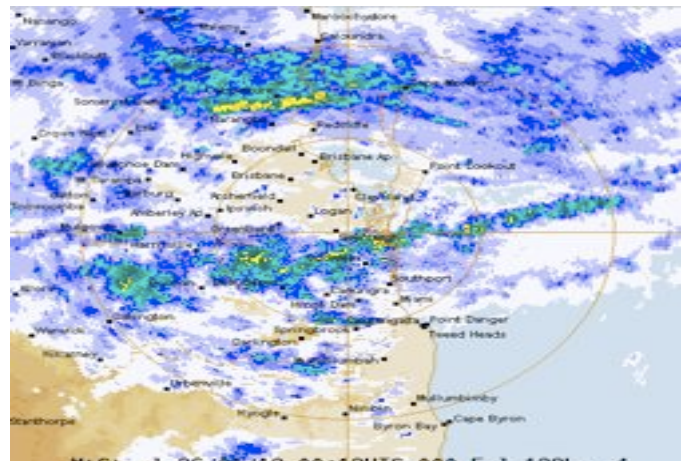


Despite this little setback, I am pretty sure that I speak for all those present when I say that it was a most enjoyable end to the year and maybe we should have a year's start, as well as a year's end. After all, it then wouldn't matter what the weather was like to begin the year.

And I'm sure Pat will get his barbeque sorted out ... eventually.

CANCELLATIONS

January saw our first day cancelled because of the heat and Australia Day cancelled because of the rain. But what else do we do when faced with weather radar like this:



Brisbane area – January 26th 2013

KNOW THINE ENEMY

We begin a new series this year, a description and detail of the weeds with which we deal.

A weed is any plant that is growing where you don't want it, and although a plant may be quite attractive, if it is doing damage within its environment, threatening other species, then it has got to go!

Our first offender is the vine that deprives us of Patrick Peek's company on Saturday mornings. When we arrive at a site, Pat goes off to search out and attack his nemesis, the Madeira vine.

Madeira vine, also known as mignonette vine, is an evergreen climber that grows from fleshy rhizomes. It has bright green, heart-shaped, fleshy, shiny leaves 4–13 cm long. The combination of fleshy leaves and thick aerial tubers makes this a very heavy vine. It smothers trees and other vegetation on which it grows and can easily break branches and bring down entire trees, which makes it a MOTT enemy #1.



Knobby, wart-like tubers on aerial stems are a key to identifying the plant. It produces masses of small fragrant, cream flowers hang from the leaf axils, which may be up to 30 cm in length. The plant spreads via the tubers, which detach very easily.

This species can reproduce through the proliferation of tubers and also from rhizome fragments that may be broken off, but can easily be transported by human activities. If fragments end up in waterways, they are easily transported to new locations.

It is an invasive species in many tropical and sub-tropical localities. Go Pat!

LOUISE

Sadly, we have to farewell our glamorous secretary, Louise Cadell, who is having to uproots and head off to Thailand to follow her heart and join vice-pres Derek, so she is having to leave MOTT, not forever hopefully.

Perhaps she'll only be giving up one set of roots for another –

there may be a *pôochaai hàeng tum* (MOTT) in Thailand.

Her time as secretary has been a sharp learning curve for her. She has learnt how to design and develop a website, which skills she endeavoured to pass on as Scott Maxwell's home in February.

A gathering of interested and willing people sat, trying desperately to follow the complications of webpages, updates, posts, upcoming events, categories and links. Our heads were, and still are, spinning. She will be sadly missed.

Thanks to Louise for all the work she has put in, especially in developing and making the website accessible and interesting.

MEET THE PLANTERS

Robert

Like most of the people I interview, Robert demurred, saying there was nothing interesting about him; but he was interestingly different from an early age. As a boy, in Sydney, Robert didn't want to be a fireman or a policeman – he always said that he wanted to be a tree planter.

He has always been interested in plants in general, in caring for them, and his great love is designing gardens and making them sustainable for the local environment as well as appealing – a practical garden can also look good. Robert likes to draw a plan of a garden; he likes to include a water feature, which is soothing, and he likes a garden in which you can meditate, a place of tranquility; a garden should be a place of retreat, a place where you can get back to nature.

He has done some contract gardening work but it's not what he does that for a living – he cares for people who have some kind of disability, a profession that he says is immensely fulfilling and rewarding, the one job he's had where there's a lot of personal satisfaction in helping someone especially when he can combine it with his love of gardens by taking them on outings, particularly to places like Newfarm Park, where they, too, can 'take time to smell the roses'

Robert feels that gardens are most important in our lives. So how does this go with people who live in flats? They can still have a garden, a different type of garden, a garden of pot plants, which can still have a water feature with some form of miniature pond.

Robert is also very interested in opals and finds it very disappointing that so many Australians are unaware of what must surely be our (very unappreciated) national gem ... or have no interest in them. A diamond is a diamond but there is an infinite variety of opals and Australia is rich in them. Compare it's multidimensional



features, it play of colours and its natural beauty. Yes, a white diamond that has been carefully cut and polished into a prism creates a spectrum of colours but a cut and polished piece of glass can do the same.

Every opal is unique – like a fingerprint. The wearer can express their personality while wearing a piece of Australia that took millions of years to create. The opals' colours range across the whole spectrum and each stone is unique.

And we have a wealth of opals. In Queensland, we have the Boulder Opal, in NSW and at Lightning Ridge, there are black opals.

For those of you with Internet access, the following websites will show you the beauty of some of our Australian stones:

Lightning Ridge, Australia's black opal capital:

<http://www.youtube.com/watch?v=5hdlvJMKORI>

Black Opal – the Mother of all Gemstones:

http://www.youtube.com/watch?feature=endscreen&v=aM71HA0_Bo0&NR=1

Robert discovered MOTT through Habitat, Queensland. He came along and enjoyed the "nice bunch of people", not to mention the best morning tea around and thinks it a great way to spend a Saturday morning.

It may have taken Robert some time to achieve his childhood ambition but now he is, indeed, a tree planter.

THINK ABOUT IT

Mini quiz here folks:

In which Rodgers and Hart song does MOTT get a mention?

Answer in the next edition.

SUBSCRIPTIONS DUE.

MOTT'S financial year runs May 1st – April 30th, so annual membership will be due in May.

Members can either use the form on the newsletter or pay by direct transfer to:

Name: Men of the Trees (Qld) Inc

BSB: 124-001

Acc No: 93057245:

And don't forget to put your name as a reference.

MEET THE KOALAS

Animals with Attitude

For nine weeks in April, larger-than-life koala sculptures will be displayed on the Gold Coast, showcasing a wealth of artistic talent.

The original sculpture was designed and created by Academy Award winning artist, John Cox, and artists have been invited to submit their own ideas for the creation of unique koalas.

Scott Maxwell had created Warwick, the rainbow koalakeet, and Francesca, the koalaiscus, both of which, along with

others, will be auctioned in May, the money raised going to the Currumbin Wildlife Hospital.

The launch weekend runs from Friday, March 1st to Sunday 3rd at Victoria Park, Surf Parade, Broadbeach.



Scott with his koala creations

The Animals With Attitude Gold Coast Sculpture Trail runs from Friday, March 8th to April 28th at various locations on the Gold Coast.

Here is an interesting piece, contributed by Lionel Fifield:

BOLIVIA'S MOTHER OF ALL LAWS ENSHRINES RIGHTS OF NATURE

LA PAZ: Bolivia is set to pass the world's first laws granting nature equal rights to humans. The Law of Mother Earth, now agreed by politicians and grassroots social groups, redefines the country's rich mineral deposits as "blessings" and is expected to bring radical new conservation and social measures to reduce pollution and control industry.

The country, which has been pilloried by the US and Britain in the United Nations climate talks for demanding steep carbon emission cuts, will establish 11 new rights for nature. They include: the right to life and to exist; the right to continue vital cycles and processes free from human alteration; the right to pure water and clean air; the right to balance; the right not to be polluted; and the right to not have cellular structure modified or genetically altered.

Controversially, it will also enshrine the right of nature "to not be affected by mega-infrastructure and development projects that affect the balance of ecosystems and the local inhabitant communities".

"It makes world history. Earth is the mother of all", said the Vice-President, Alvaro Garcia Linera.

The law has been heavily influenced by a resurgent indigenous Andean spiritual world view, which places the environment and the earth deity known as the Pachamama at the centre of all life. Humans are considered equal to all other entities.

Bolivia has long suffered from serious environmental problems from the mining of tin, silver, gold and other raw materials.

Guardian News & Media



March to May 2013

The most up-to-date version of this schedule can be found on the **MOTT** website:

<http://www.menofthetrees.org.au>

Questions? Check with the coordinator, or with Fran 3851 0858

Date	Planting location	Coordinator
Wednesday, March 6th	Wednesday Seed Collection Meet at the Greening Australia Nursery Paten Park, Paten Road, The Gap	Marion 3366 1448
Saturday, March 9th	Bunya Crossing, Wongon Creek UBD 107 Q20 to Dugandan Reserve, or take Dugandan to Allan Rd, right at Weston Dr to Banks Ct Park and walk down grassy hill 1 pm- Management meeting- Please bring nibblies for afternoon tea	Wendy 0437 439 774 Fran-3851 0858
Saturday, March 16th	Thomsett Park, Crane Reserve (limited parking, but more room to park in Olakuna Cr – UBD 117, L19)	Kerry 3289 9206
Saturday, March 23rd	Cassimaty Park, Ferny Grove (Kedron Brook), opposite BP service station on Samford Rd. Site of 2012 Qld Rail offset plantings. (UBD 137, L1)	Marion 3366 1448 Kerry 3289 9206
Saturday, March 30th Easter	An Saturday to spend with family and friends. Enjoy!	Insert your phone number here.
Wednesday April 3rd	SEED COLLECTION Meet at the Greening Australia Nursery Paten Park, Paten Road, The Gap	Marion 3366 1448 0413 483 833
Saturday, April 6th	Holy Spirit Anglican Church, 1036 Moggill Road, Kenmore, UBD177, N9	Kerry 3289 9206
Saturday, April 13th	Yellowwood Drive, Ferny Hills (Part of Wightman Reserve)	Wendy 0437 439 774

Saturday, April 20th	Paten Park (old usual site, near Scout den), Paten Road, The Gap	Kerry 3289 9206 Marion 3366-1448
Saturday, April 27th	Thomsett Park, Olakuna Cres, Ferny Hills Kerry (off Gordon Road, UBD117, L20)	Kerry- 3289 9206
Wednesday, May 1st	SEED COLLECTION Meet at the Greening Australia Nursery Paten Park, Paten Road, The Gap	Marion 3366 1448 0413 483 833
Saturday, May 4th	Paten Park NEW SITE Parkview Drive, The Gap or enter Paten Park as usual, walk down track to right just before bridge leading to nursery	Kerry- 3289 9206
Saturday, May 11th	Wongan Creek, Bunya Crossing, UBD107, Q20 Either drive to end of Dugandan Rd, then down track to Bunya crossing, through drawgate and picnic area and up Wongan Ck to planting site/or near end of Dugandan Rd take Allen Rd on left, first right at Weston Drive, first right at Banks Court, park, and walk down grassy easement Management meeting at Erika Jakemen's at 1 p.m. 119 Plucks Road, Arana Hills. Ph. 3351 1809 Please bring something to share for afternoon tea.	Wendy 0437 439 774
Saturday, May 18th	Cedar Creek in Arbor Street Park, entrance beside Police Station, Tramway Street, Ferny Grove. Drive thru park to creek at far right-hand corner	Kerry- 3289 9206
Saturday, May 25th	Ithaca Creek State School, Lugg Street, Bardon (Planting with children, teachers and parents) Vehicular entrance Primrose Terrace	Marion 3366 1448
Saturday, June 1st	Paten Park (old usual site, near Scout den), Paten Road, The Gap	Kerry 3289 9206 Marion 3366-1448
Wednesday, June 5th	SEED COLLECTION Meet at the Greening Australia Nursery Paten Park, Paten Road, The Gap	Marion 3366 1448 0413 483 833
Saturday, June 8th	Yellowwood Drive, Ferny Hills (Part of Wightman Reserve)	Wendy 0437 439 774
Saturday, June 15th	129(?) Broseley Road, Toowong (BCC owned spare allotment half-way down road, on right-hand side)	Marion 3366 1448
Saturday, June 22nd	Holy Spirit Anglican Church, 1036 Moggill Road, Kenmore, UBD177, N9	Kerry- 3289 9206
Saturday, June 9th	Paten Park NEW SITE Parkview Drive, The Gap or enter Paten Park as usual, walk down track to right just before bridge leading to nursery	Kerry- 3289 9206



The Men of the Trees Inc.

Annual Subscription

For May 1st 2012 - April 30th 2013

Individual	\$25
Concession	\$15
Family	\$45
Corporate	\$100

Please send a cheque or Money Order to

The Men of the Trees

PO Box 283

Clayfield Qld. 4011

If you are not renewing your membership kindly mark
the box and return the slip to the above address.



NAME: _____

ADDRESS: _____

EMAIL: _____

Your valued support enables The Men of the Trees to continue the vital role of tree planting.

Jim MacDonald
Membership Secretary

TWAHAMWE - Vol XXXIII No 5, December 2012

If undelivered please return to

PO BOX 283 CLAYFIELD QLD 4011

PRINTPOST APPROVED PP 434810/0002

SURFACE MAIL

POSTAGE
PAID
AUSTRALIA