



Resilient Zero-Trust Access with Teleport

Muneer Taskar, EMEA Growth



What We Do

VISION We make computing trustworthy.

MISSION We modernize **identity, access, and policy for infrastructure**, for human and non-human identities.

IMPACT Improve **velocity of engineering teams**, protecting time to market.
Improve **resilience of infrastructure** against human factors or compromise.

TRUSTED by industry leaders



3 of top 5 financial services firms


3 of top 10 software firms

5 of top 20 market cap leaders

What if

Everyone and everything in your infrastructure has a strong identity

In steady state, no one has access to anything in your infrastructure

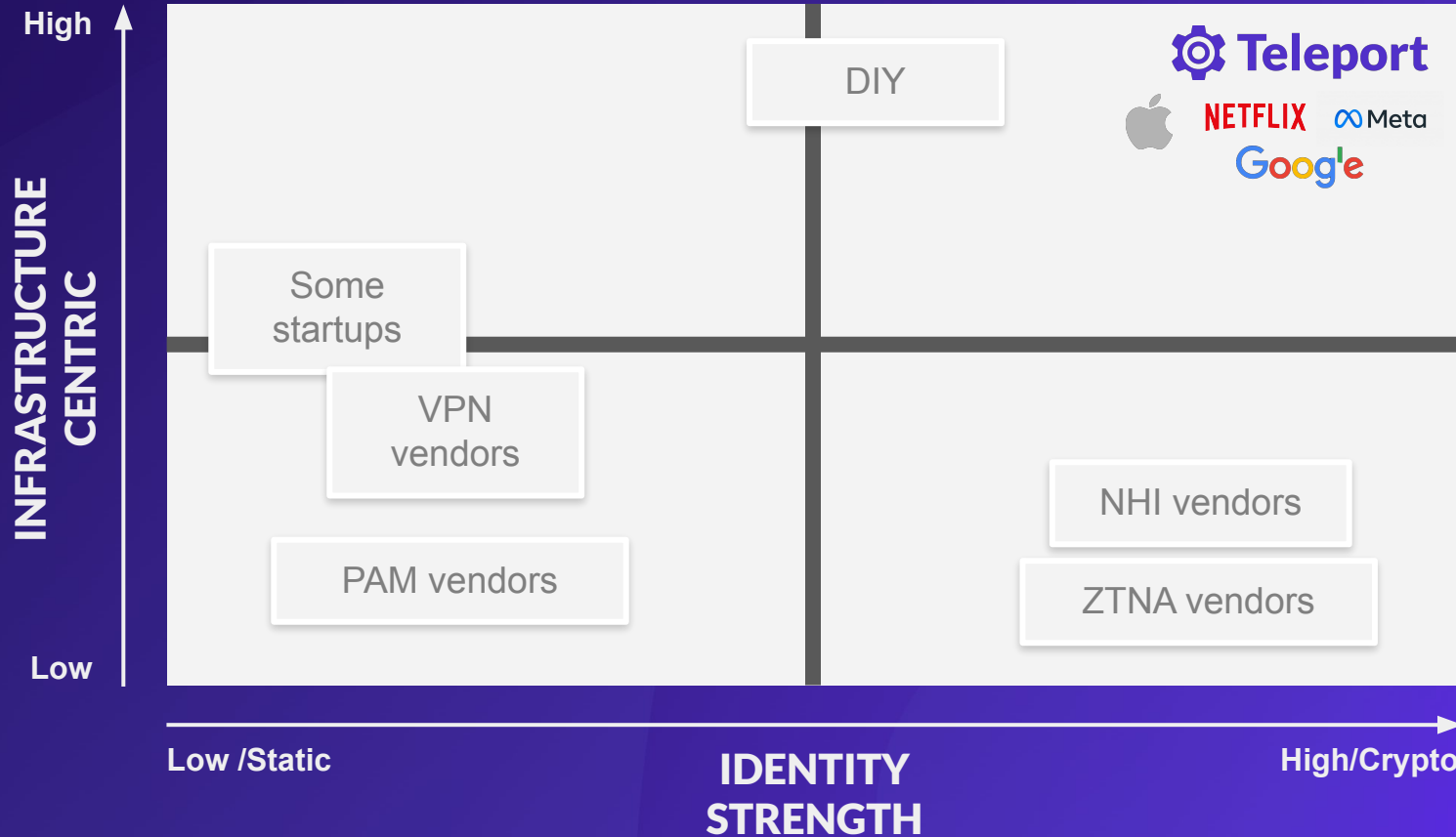


Trusted
Computing





When work needs to be done, engineers get access seamlessly

When work is done, access disappears automatically

Infrastructure Identity Landscape



Infrastructure Identity Architecture

 SECURITY INTELLIGENCE	Govern & Audit	Single source of truth for everyone and everything
 SHORT-LIVED PRIVILEGES	Enforce Policy	Least privileged, on-demand access based on tasks; secretless authentication, ephemeral authorization
 ZERO-TRUST NETWORKING+	Connect	Session-level encryption and authentication to infrastructure assets
 CRYPTOGRAPHIC IDENTITY	Identify	Humans, machines/workloads, endpoints, AI agents

What We Provide

Teleport

- **Certificate-based** authentication
- Just-in-time (**JIT**) access
- Full session recording & **compliance** reporting
- Human, Non-Human & **Agentic AI**

Cockroach Labs

- Multi-region **fault tolerance**
- Cloud-native design for **high-throughput, low-latency transactions**
- Supports core ledgers, payment systems, and **AI Data Storage**

Better Together Story

Teleport with CockroachDB enabled issuer to operate confidence

Resiliency

CockroachDB's distributed SQL architecture ensures always-on availability—even during regional failures

Security

Teleport enforces zero-trust, identity-based access with fine-grained controls, short-lived certificates, and full session recording across environments

Speed & Compliance

Fast failover, consistent data access, and complete audibility across all regions meet regulatory standards while improving developer velocity

CAPABILITY

Zero-Trust, Identity-Based Access

Teleport Value:

SSO, MFA, RBAC, device trust policies, just-in-time access

Cockroach Labs Value:

Strong consistency with the highest level of data isolation

CAPABILITY

Multi-Region, Highly Available Architecture

Teleport Value:

Access orchestration across hybrid and multi-cloud environments

Cockroach Labs Value:

Geo-partitioning, automatic failover, 99.999% SLA

CAPABILITY

Operational Complexity

Teleport Value:

Seamless access without VPNs or bastion hosts; developer-friendly access workflows

Cockroach Labs Value:

Scalable distributed SQL with familiar PostgreSQL interface; no manual sharding

Trusted Access To CR AI Workloads



Trusted AI Access to Vector Databases

Teleport secures non-human identity access to CockroachDB's vector search, ensuring only approved AI agents query embeddings and sensitive data.



Resilient + Secure Stack

Cockroach's always-on, distributed SQL & Teleport's Zero-Trust Access platform powers global, secure, AI applications at scale.



Granular RBAC for AI

Limit AI access to specific tables, indexes, or vector functions within CockroachDB, ensuring least privilege by default.



End-to-End Visibility

All AI interactions with CockroachDB are proxied through Teleport, delivering full audit trails and real-time observability.

Teleport & Cockroach Labs: Driving Multi-Cloud Resilience - Top Payment Processor

Challenge:

- Tier 0 app requires 99.999% availability for enterprise wide adoption
- Etcd backend (existing database) limited scalability and lacked multi-region support

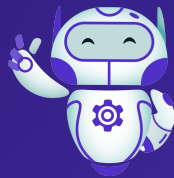
Solution:

- Switched to CockroachDB for Teleport backend
- Enabled global multi-region active-active deployment
- Achieved Tier 0 SLA, scalability, high performance, resilient access

Outcome:

- Reliable, scalable infrastructure for 1,500 concurrent users
- Passed security, latency, resiliency and throughput requirements for enterprise-wise adoption

Thank you!



Muneer Taskar

muneer.taskar@goteleport.com