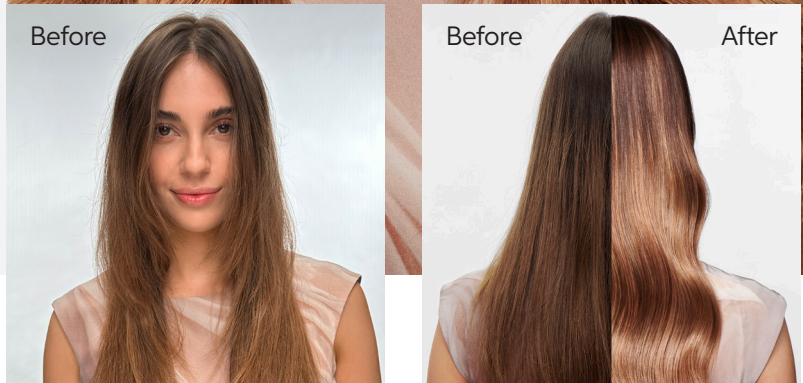


# ROSE GOLD GLASS HAIR

*“A freehand inspired  
Illuminage with a mix of  
balancing mid tones of rose  
wood into light delicate  
rose gold tones, layer with  
Shinefinity Golden Top Glaze  
for irresistible silky shine.”*

@moniquemcmahoncolour



## COLOR FORMULAS

### 01. BASE LAYER



**Formula A:**  
30g Freelifights  
+ 45g Freelifights 6%,  
increasing to 9%

### TONING



**Formula B:  
Root Shadow**  
10g 6/ + 10g 6/19 + 20g 1.9%  
+ 20g Post Service Treatment



**Formula C:  
Mid Tone**  
5g 8/ + 15g 7/53  
+ 40g 1.9%



**Formula D:  
Blonde Toning**  
20g 10/53  
+ 40g 1.9%

### 02. TOP GLAZE LAYER



**Formula E:**  
10g 09/3 + 10g 09/05  
+ 20g Bottle Activator

**Formula F:**  
20g 09/3  
+ 20g Bottle Activator

### 03. FINISH LAYER



Ultimate Smooth

## 01. BASE LAYER

Section the hair to frame the face and map out where the lightness will be. Begin by taking diagonal slices at the nape.

Hold the hair at 45° with tension directly from the head. Load the brush and begin in the mid areas, and work down, layering the Freelights to where you require more lightness.

Use the balayage board to saturate lightener to the ends. Wrapping with Perforated Wrap Foils to protect each area.

Proceed to horizontal direction, allow hair to fall with natural tension for seamless results. Continue until the back is complete.

Have the brush sweep down and diffuse in-between the ribbons for softer transition.

Around the hairline, direct the hair slightly back and 45° from the head – maintain tension and paint close to the roots as desired.

Bring all the hair back and wrap with the Perforated Wrap Foils. Shampoo with **Ultimate Smooth** and **Blondor Seal and Care**.



## TONING

Divide toning into 3 – **hairline & top**.

Apply the **mid tone** formula **C** to the middle section and the formula **D** to the **lengths and ends** **and the hair line** to maintain lightness at the front.

On the top section tap in the formula **B** at the roots and then transition into formula **C & D** on the lengths and ends.

Shampoo with **Ultimate Smooth** followed by post service conditioner.



## 02. TOP GLAZE

Apply formula **E** to the perimeter for a more rose tone, and formula **F** on the top section for a more golden reflection.



## 03. FINISH LAYER

Finish with **Ultimate Smooth** Micarle Oil Serum for silky shine.

