

O.P.I.

NEW

The GElevate™ Extension System



GElevate™ Soft Gel Tips

Prepped & Ready to Apply

- Double-sided MicroEtched tips eliminates mechanical and chemical etching
- Eliminates tip prep steps making the overall application process faster. Reducing service times by half, enabling more salon services and revenue
- Clear appearance after top coat application

Flexible & Natural Fit

- Flexible c-curve ensures a natural and comfortable fit
- Ultra-thin edges blend seamlessly at cuticles
- Available in 16 sizes

Gold Standard ProApex™

- Designed for durability, natural appearance and lasting comfort
- Strategic apex placement ensures easy fills and maintenance as nails grow
- Expertly designed based on professional nail sculpting experience

Available in medium length with a clear finish in five shapes: round, almond, stiletto, square, and coffin



O.P.I.

NEW

GElevate™ 4-in-1 Builder

An all-in-one formula with OPI Intelli-BUILDER Technology™ that brilliantly adheres, fills, overlays, and builds. Available in clear and nude shades with up to 3 weeks of flawless wear.



OPI'm Flawless
(clear)



Pink Over-slay
(pink)



For the Fill of It
(warm pink)



4get Me Not
(cool pink)



Blank Canvas
(soft white)

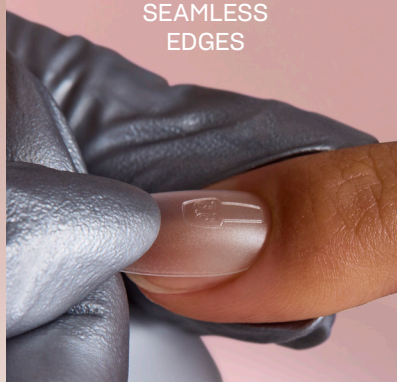
DOUBLE-SIDED
MICROETCHED TIPS



PROAPEX™ TIPS BUILT
FOR STRENGTH, COMFORT
AND ANY NAIL SHAPE.



SEAMLESS
EDGES



ADHERES, FILLS,
OVERLAYS, BUILDS



GElevate™
4-in-1 Builder (Clear)
15ml



GElevate™
4-in-1 Builder (Colour)
15ml



GElevate™
Soft Gel
Extensions



GelColor
Intelli-Gel™
15ml

| | | | | |
|-------------------------------|---------|----------|---------|---------|
| Salon cost | £18.99 | £21.90 | £36.90 | £19.90 |
| Average # of services per pkg | 20 | 20 | 64 | 80 |
| Cost per application | £0.95 | £1.10 | £0.58 | £0.14 |
| Weeks of wear | 3 weeks | 2+ weeks | 3 weeks | 3 weeks |

OPI GElevate™ System cost per service from £1.67



*No animal-derived ingredients or by-products.
**See opi.com for details.

O.P.I.

NEW

Lightning Flash Cure Gel Lamp



Sleek, functional, and easy to use, this lamp gives you a quick flash cure to lock your GELocate™ Soft Gel Tips, GELocate™ 4-in-1 Builder, charms, and nail art in place—just remember to finish with a full cure in the OPI Star Light Lamp.

Why You'll Love It

- Touch LED Light with a built in 30 second timer
- Single Wavelength 400nm
- Lightweight and Portable
- 360 Degree Movement
- Acetone & IPA Resistant
- Cordless
- 24 Hour Charge
- USB/USB-C

Steps for Perfect Application

| | | |
|--|-------------|---|
| Lock a GELocate™ Soft Gel Tip | 3–5 seconds | Tap the ring of the Lightning Flash Cure Lamp. Hold the tip on the client's nail and move it into the light, stopping approximately 1 inch from the light. Hold for 3–5 seconds, rocking the finger from side to side to lock the tip in place. |
| Lock your GELocate™ 4-in-1 Builder Shape | 3–5 seconds | Tap the ring of the Lightning Flash Cure Lamp, being sure your builder gel is placed where you want it. Move the nail into the light, stopping approximately 1 inch from the light. Hold for 3–5 seconds, rocking the finger from side to side to lock the shape in place. |
| Lock GelColor Nail Art | 5–8 seconds | Tap the ring of the Lightning Flash Cure Lamp to lock nail art designs in place. Move the nail into the light, stopping approximately 1 inch from the light. Hold for 5–8 seconds, rocking the finger from side to side to lock the design in place. |
| Lock 3D Embellishments | 3–5 seconds | Apply clear builder or GelColor Top Coat to secure 3D embellishments. Tap the ring of the Lightning Flash Cure Lamp. Move the nail into the light, stopping approximately 1 inch from the light. Hold for 3–5 seconds, rocking the finger from side to side to lock the embellishment in place. |



Level up your salon service with OPI's new generation of Professional innovation and essentials

Flawless nails don't happen by chance, it starts with meticulous prep. Combined with a thoughtful consultation, this is your blueprint for flawless client results and retail success.

Master OPI nail prep essentials

1. Ensure you're washing the client's hands as well as your own before service.
2. File and shape the nail, pushing back and lifting non-living tissue from the nail plate. Only trim if necessary. Dry prep is recommended for any Gel service.
3. Wipe the nail thoroughly with NAS 99
4. Buff the nail with recommended OPI flex file required for your service
5. Wipe once more with NAS 99
6. Apply BondAid to each nail, to balance the pH of the nail plate and maximise adhesion of product.
7. For all base coats, ensure you shake the bottle for 1 minute to ensure even consistency. Always remember to cap the free edge with your base coat, regardless of which one you choose. Proper application ensures longer-lasting wear and prevents lifting!

Primer for Ultimate Staying Power (Optional)

Boost the longevity of your OPI GElevate™ Builder and GelColor Intelli-Gel™ services with OPI Bondex; an acid-free primer that contains a touch of HEMA for extended wear, adhesion and durability.

PRO TIP: BONDEX

A little goes a long way. Apply sparingly or just along the free edge to prevent chipping. For an extra seal, circle around the cuticle edge while leaving the center of the nail free of product.

Want expert guidance and tailored solutions? Ask for an in-person or digital demo with our award winning Education Team.

Choosing the right OPI System



| WHAT IT IS | OPI GELCOLOR SUPER BASE (HEMA-Free) | OPI GELCOLOR STAY STRONG BASE COAT (Contains HEMA) | GELEVATE™ 4-IN-1 BUILDER (HEMA-free) | GELCOLOR INTELLI-GEL™ GEL POLISH |
|---------------|---|---|--|---|
| HOW TO USE IT | <ul style="list-style-type: none">• WIPE THE BRUSH: Remove excess product inside the neck of the bottle.• APPLY THINLY: Brush a thin layer onto the nail, leaving a hair's width gap around the cuticle and sidewalls.• CURE: Cure under the lamp for 30 seconds. | <ul style="list-style-type: none">• APPLY THINLY: Use a small amount and scrub or burnish the product into the nail. It's normal to see brush marks.• CURE: Cure under the lamp for 30 seconds | <ul style="list-style-type: none">• OVERLAYS: Provides strength to the natural nail while it grows out.• LENGTH: A builder that builds short and medium length of the nail.• ADHERES: Fuses tailor-made OPI soft gel tips, built for strength, comfort, and any nail shape.• FILLS: Backfills and sculpts overlays and tips in one bottle. <p>Join our award-winning Educators in our Education classes and master the OPI GElevate™ service.</p> | <ul style="list-style-type: none">• Apply Two Coats of your chosen OPI GelColor shade. Ensure to shake the bottle well before use. Cure each layer for 30 seconds under the OPI Starlight Lamp.• Select your preferred top coat - shine or matte. Shake the bottle well, then apply the top coat using smooth, gentle strokes to avoid dragging or picking up color.• Cure for 30 seconds, then thoroughly wipe the nails with NAS 99 and finish with nourishing OPI cuticle oil. |
| GOOD TO KNOW | Best for clients with strong, dry nails or clients with a HEMA allergy. This is OPI's gentlest gel base formula. | Ideal for clients with weaker nails or those needing longer wear. Provides extra adhesion. <div>PRO TIP</div> Choose the base coat based on your client's nail condition in the consultation stage for the best results. | <ul style="list-style-type: none">• Available in Clear and four Neutral shades, GElevate™ is perfect for nails that need extra support. It allows the nail to have a foundation for strength.• GElevate™ builder (Clear) give 3 weeks of wear• GElevate™ builder (Colour) gives 2+ weeks of wear• Vegan*. No animal derived ingredients or by-products. | |