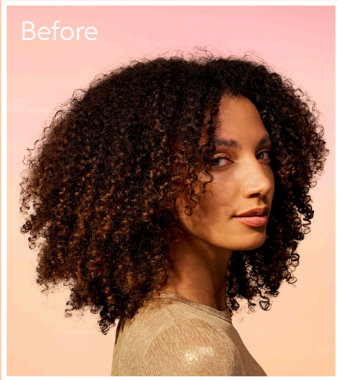


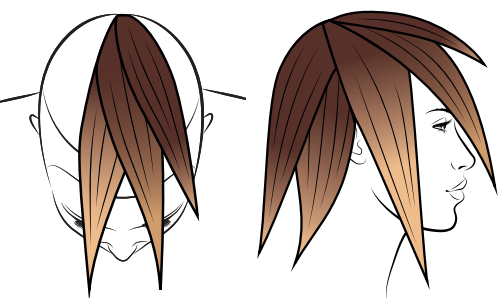
GOLDEN HOUR BRONZE

Glowing bronze tones with different levels of clarity and depth. Mainly focused around the face with a partial application gives this look a sunlit halo.



COLOR FORMULAS

<p>01. Roots 5/05 + 6%</p>	<p>02. Mid Lengths 7/05 + 9%</p>	<p>03. Ends 9/05 + 12%</p>	<p>04. Glaze 09/05 + Bottle Activator</p>



COLOR STEPS

<p>Apply your roots.</p>	<p>Blend your end color to your mid length color into your root shade section by section.</p>	<p>Glaze with Shinefinity for a top coat shine.</p>	

STEP BY STEP GOLDEN HOUR BRONZE

01. The Base

Section off your two front triangles and a top triangle.

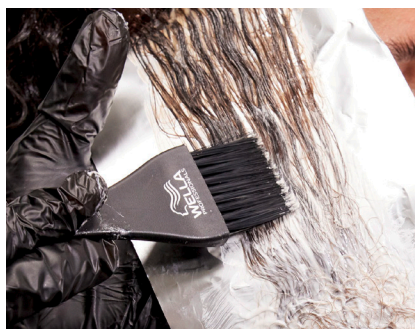
Work on a diagonal angle.

Apply your root color and melt into your mid and lighter shade.



02. Master the Blend

Applying your shade with a tint brush and further blending your shade with your fingers will help to smoothen the transitions.



TIP: For a natural looking gradience stagger the size of your root color. This will give a gradience with a lived-in feel.

Develop for up to 40 min.

Rinse and remove with
ColorMotion+.



03. Glaze

For a final topcoat shine glaze with Shinefinity. If more vibrancy or balancing is needed use Color Touch for this final step.



04. After Care

Use Ultimate Repair line to repair the hair from the inside out. With AHA rebuild bonds inside & Omega -9 to replenish hair outside.



THE
TREND

MEET THE
EXPERTS

TECHNICAL
SKILLS

CARE &
MAINTAIN