



Installation Instructions

#LG5-GA-RK: Retrofit Kit - Gate, LG5-GA Manhole Guard Retrieval System

Introduction: The Pelsue Company has developed an entrance gate that can be retro-fitted to a standard LG5-GA manhole guard system. The retrofit kit #LG5-GA-RK consists of the aluminum swing gate and the associated hardware for installation. It also includes a template for proper installation on to the guard.

NOTE: The procedure described herein shall only be undertaken by those with a reasonable level of experience in general mechanics and the use of the required equipment listed below.

Required Equipment:

- Handheld power drill
- Drill Bit - #9
- Drill Bit - 17/32"
- Hex Key - 1/8"
- Socket Set including 3/4" and 3/8" sockets
- Small hammer
- Rubber mallet

PARTS LIST: #LG5-GA-RK

Item Number	Part Number	Description	Quantity
3	501306-001	WELDMENT - MANHOLE GUARD GATE, MANHOLE GUARD RETRIEVAL SYSTEM, LG5	1
4	118535-RH1	LATCH - SPRING LOADED, 1/2" DIA. STAINLESS STL BAR, ROLL PIN STOP, RH	1
5	501308-001	HINGE - SURFACE MOUNT, LIFT-OFF, ZINC ALLOY, BLACK POWDER COAT	2
6	103518-150	SCREW - CAP, FLAT SOCKET, 10-24 UNC X 1.50" LONG, BLACK	4
7	112178-001	LOCKNUT - NYLON INSERT, 10-24 UNC, BLACK OXIDE	8
8	103518-200	SCREW - CAP, FLAT SOCKET, 10-24 UNC X 2.00" LONG, BLACK	4
9	100157-012	SCREW - CAP, HEX HEAD, 5/16"-18 X 1-3/4" LONG, PLATED	2
10	100048-116	LOCK NUT - HEX, 5/16-18 NYLON INSERT	2
11	501309-001	TUBE CAP - SNAP IN, FLEXIBLE RIDGES, PLASTIC, FOR 1" SQ TUBE	4
12	501315-001	WELDMENT - SPRING PLUNGER RECEIVER, LG5-GA GATE RETROFIT	1
13	100049-011	SCREW - CAP, HEX HD, 1/2-13 X 2.25, GR 5, PLATED	2
14	121311-050	NUT, CENTERLOCK, HEX, 1/2-13 UNC, PLATED	2
15	501310-001	GATE MOUNTING HOLE TEMPLATE - LG5 RETROFIT	1

Note: While all included components are listed, the majority of the components are part of the assembled gate.



2500 S. Tejon St.
 Englewood, CO 80110
 Ph: 1-800-525-8460, (303) 936-7432
 Fax: (303)934-5581
 Web: www.pelsue.com E-mail: sales@pelsue.com



Figure 1a: Gate Assembly



Figure 1b: Spring Latch Receiver with hardware

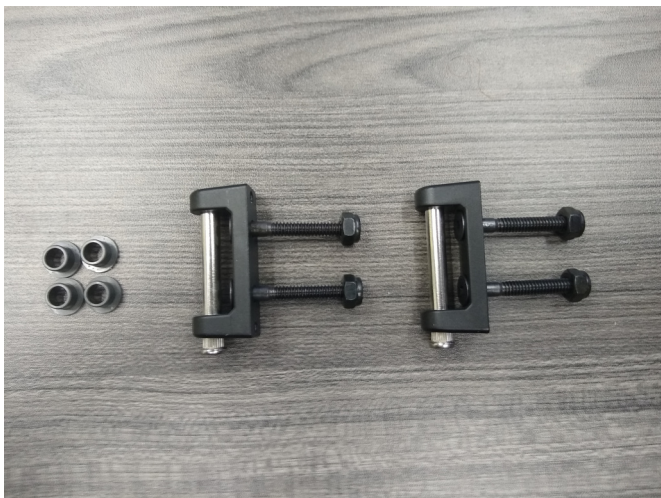


Figure 1c: Guard side hinges with hardware, pins and nylon bushings.



Figure 1d: Hinge mounting hole template

1. Verify all components are included. Assembled gate (Figure 1a), spring latch receiver with hardware (Figure 1b), guard side hinges with hardware, pins, and nylon bushings (Figure 1c), and hinge mounting hole template (Figure 1d).
2. Assemble LG5 (Figure 2). Remove chains.

Figure 2: Assembled LG5 with chains



Figure 2



Figure 3

3. Drill through the existing 1/2" holes (Figure 3) located on the front left leg of the LG5 with a 17/32" drill bit. This will provide clearance for the 1/2" bolts used to secure the spring latch receiver.

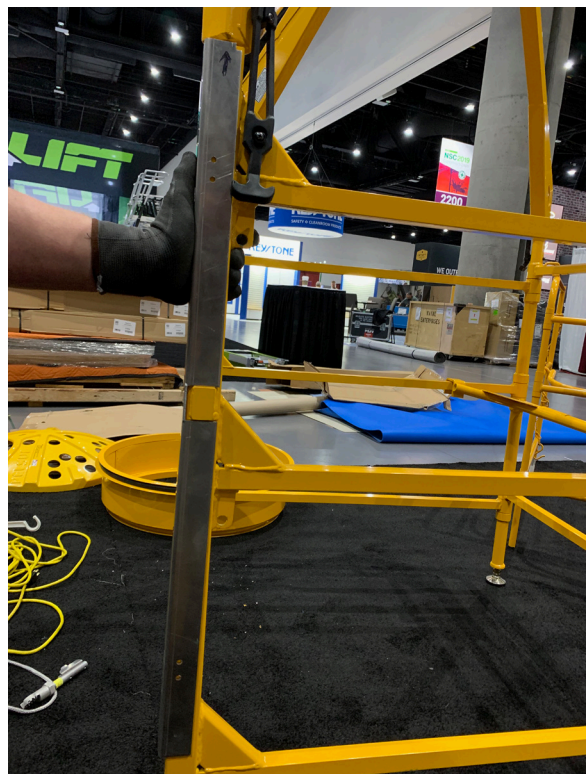
Figure 3: Locate 1/2" holes on the front left leg of the LG5.

4. Orient the hinge mounting hole template so that the notch is pointing up (Figure 4a). With the notch pointed up slide the template in place on the right front leg of the LG5 (Figure 4b). Clamp the template securely in place. If you choose to hold the template in place (as shown) DO NOT drill a hole in your hand.

Figure 4a: The proper hinge mounting hole template orientation is shown below.



Figure 4b: Slide the hinge mounting hole template in place.



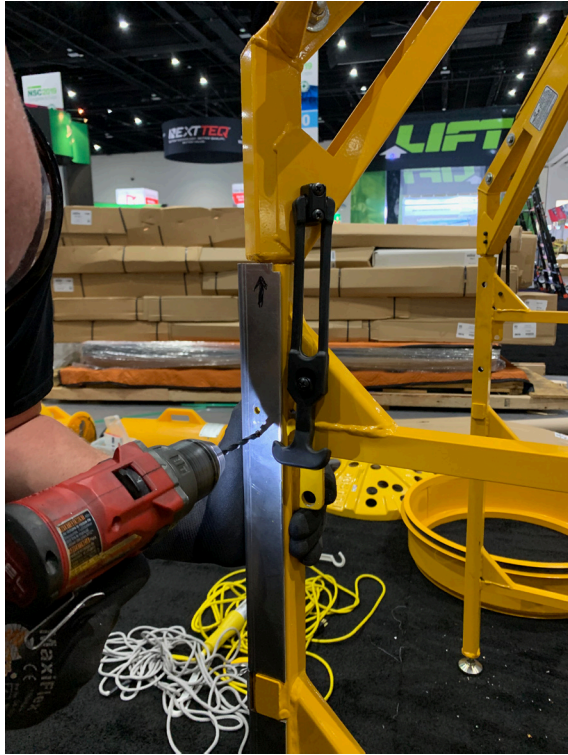


Figure 5a: Drill upper hinge mounting holes.

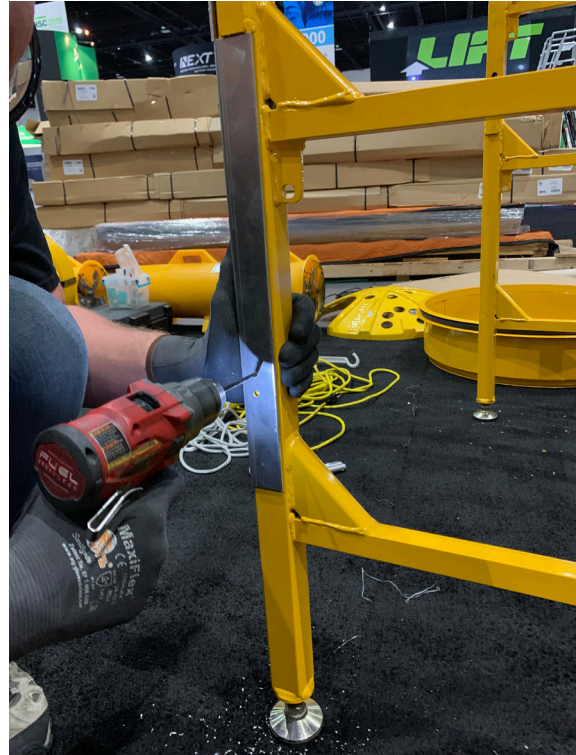


Figure 5b: Drill lower hinge mounting holes.

5. Using a #9 drill bit, drill the upper hinge mounting holes (Figure 5a) and the lower hinge mounting holes (Figure 5b). Note that the template holes are slightly smaller than the #9 drill bit to ensure proper hinge alignment. Drill a total of 8 holes, 4 from each side.



Figure 6: Install the spring latch receiver.

6. Install the spring latch receiver on the front left leg of the LG5 using the included 1/2" bolts and center locking nuts as shown in (Figure 6).



Figure 7: Install hinges using the included hardware.

7. Install the upper and lower hinges on the front right leg of the LG5 using the included #10 bolts and nylon locknuts as shown in (Figure 7).

8. Insert the included nylon bushings into the hinges attached to the assembled gate as shown in (Figure 8).

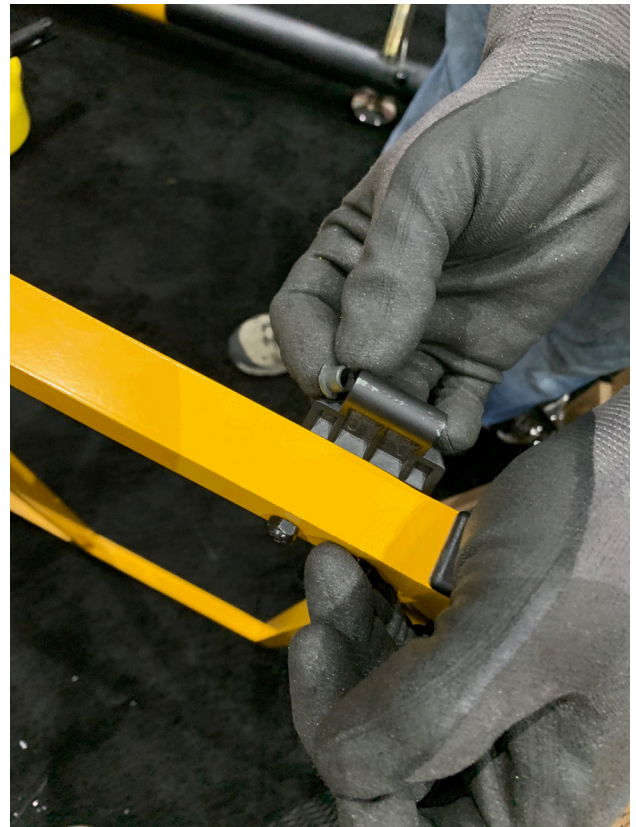


Figure 8: Insert nylon bushings into the hinges on the assembled gate.



9. Align the lower hinge first and insert the hinge pin as shown in (Figure 9). When aligning the upper hinge, it may be necessary to adjust the hinge piece attached to the gate. In this case, lightly tap the hinge piece with a rubber mallet. Insert the upper hinge pin. Once both hinge pins are inserted lock the knurled hinge pins into place by tapping them lightly with a small hammer.
10. To close the gate, first place the spring latch in the locked position as shown in (Figure 10a). Align the spring latch with the spring latch receiver and release the spring latch by twisting the handle clockwise (Figure 10b).

Figure 9: Insert hinge pins to attach the gate to the LG5.



Figure 10a: Place the spring latch in the locked position.



Figure 10b: Release the spring latch into the spring latch receiver.



Figure 11: LG5 with installed gate.

Please contact T.A. Pelsue Company Customer Service with any questions and/or concerns.

T.A. Pelsue Company
2500 South Tejon Street
Englewood, Colorado 80110
1-800-525-8460
www.pelsue.com