



Product Specifications

Model #SB-SM2 Fall Arrest Post Base, 4-Arm Manway Mount, 12" Arms, Multi-Position

The Pelsue Model #SB-SM2 4-Arm Manway Base is specifically designed to provide a portable mounting point for a Pelsue Model #FT-C70 Fall Arrest Post. The four arms that extend from the base plate of the Model #SB-SM2 pivot independently, and are equipped with sliding bolting blocks that can be secured at any point along the leg's length. These two features allow the Model #SB-SM2 to mount over a large variety of sizes of manways up to a 26-5/8" maximum diameter bolt circle. The Model #SB-SM2 is constructed of steel with a powdercoated finish. The Model #SB-SM2 is only rated for usage in conjunction with a Pelsue Model #FT-C70 Fall Arrest Post and must be operated according to the supplied Product Manual.

General Specifications:

The #SB-SM2 is approved as a portable mounting base for a Pelsue Model #FT-C70 Fall Arrest Post when both products are employed and utilized according to their respective Product Manuals.

- ! NOTE ! - Installation of the Model #FT-C70 Fall Arrest Post on a Model #SB-SM2 Manway Base will reduce the allowed number of users from 3 to 2. Always remember that a complete fall arrest system must be employed and rated according to the capabilities of all of the components used within that system.

Materials & Construction:

- General Construction.....Welded Carbon Steel, Powdercoated
- Hardware.....Grade 8 Steel Zinc Plated Steel

Weight:

- Weight..... 39.8 lbs. (18.1 kg)

Features:

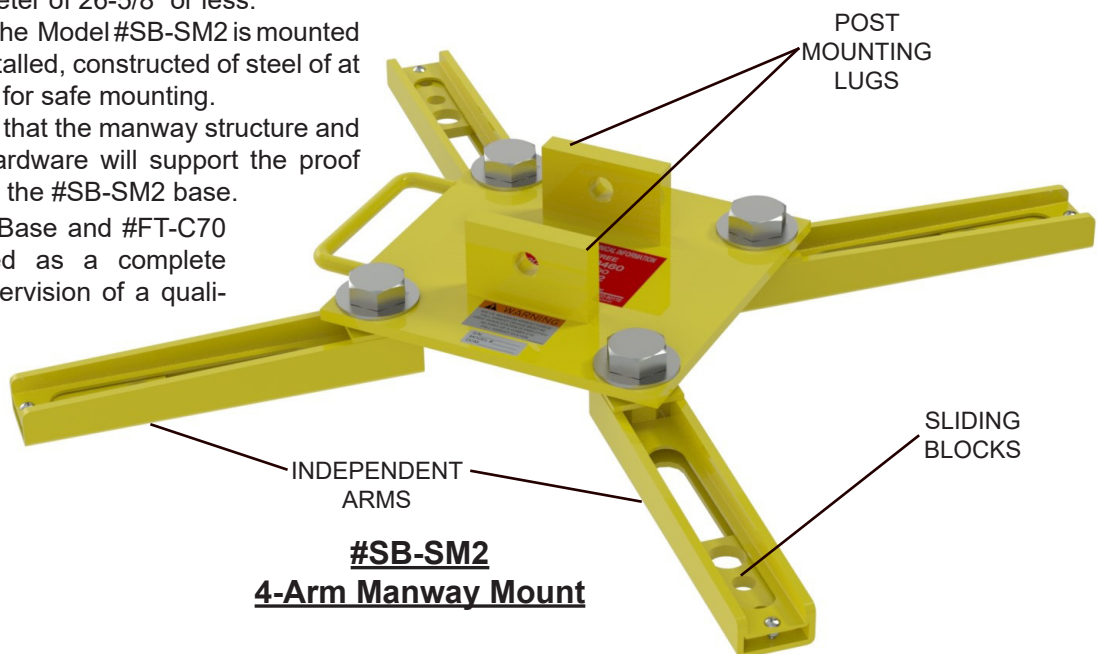
- Portable Fall Arrest Post Base for installation on manways
- Independently pivoting arms and Slider Blocks allow maximum adjustment
- Folding Arms and handle for easy transportation or stowage
- Provides an approved mounting base for an #FT-C70 fall arrest post

Usage Requirements & Limitations:

- The Model #SB-SM2 is only rated for use in conjunction with a Pelsue Model #FT-C70 Fall Arrest Post
- The Model #SB-SM2 is only to be used on manways with a bolt circle diameter of 26-5/8" or less.
- The manway to which the Model #SB-SM2 is mounted must have a cover installed, constructed of steel of at least 1/4" in thickness for safe mounting.
- The user must ensure that the manway structure and the cover securing hardware will support the proof loads imparted to it by the #SB-SM2 base.
- The Model #SB-SM2 Base and #FT-C70 Post must be utilized as a complete system under the supervision of a qualified person.



**#SB-SM2
4-Arm Manway Mount
(Folded)**

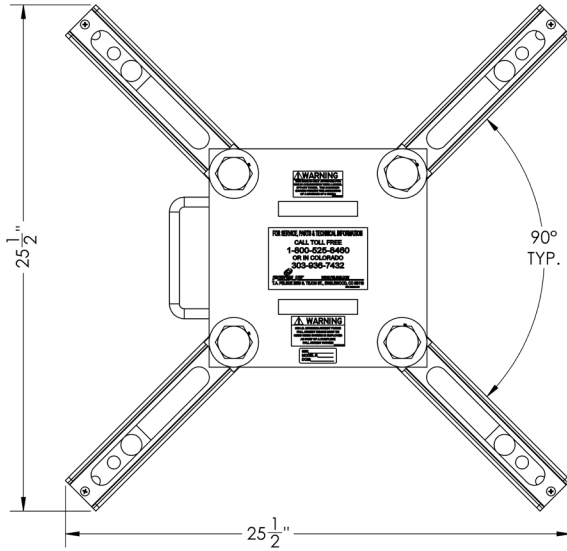


**#SB-SM2
4-Arm Manway Mount**

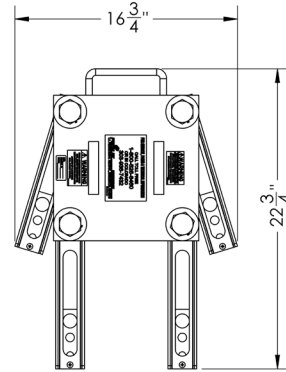
PELSUE
T.A. Pelsue Company
2500 S. Tejon St.
Englewood, CO 80110
Ph: 1-800-525-8460, (303)
Fax: (303)934-5581
Web: www.pelsue.com E-mail: sales@pelsue.com



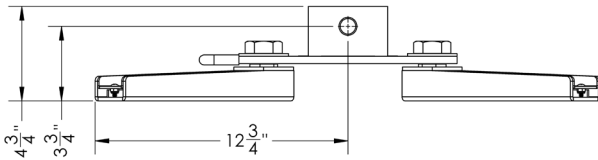
Product Specifications



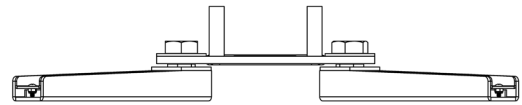
TOP VIEW



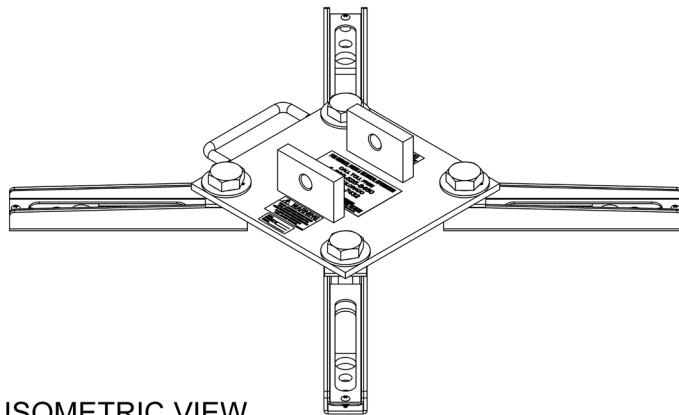
TOP VIEW
(FOLDED)



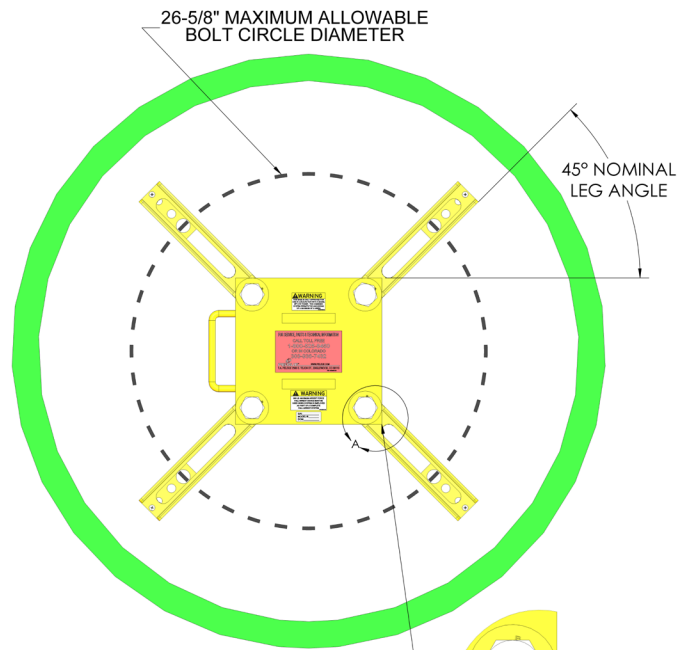
SIDE VIEW



FRONT VIEW

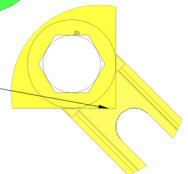


ISOMETRIC VIEW



ALL 4X CORNERS OF THE BASE PLATE
MUST LIE ABOVE THEIR RESPECTIVE
LEGS FOR SAFE INSTALLATION

**APPROVED MOUNTING
CONFIGURATION**



2500 S. Tejon St.
Englewood, CO 80110
Ph: 1-800-525-8460, (303) 936-7432
Fax: (303)934-5581
Web: www.pelsue.com E-mail: sales@pelsue.com