

OPERATING AND MAINTENANCE INSTRUCTIONS

P/N 110172-001

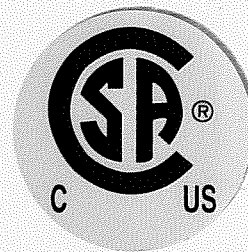
MODEL 1380D AXIAL BLOWER/PURGE PAC

TABLE OF CONTENTS

<u>SECTION</u>	<u>PAGE NUMBERS</u>
1.0 GENERAL	1
2.0 SAFETY PRECAUTIONS	1
3.0 MAINTENANCE AND REPAIR	1
4.0 PRODUCT DESCRIPTION	2
5.0 START-UP AND OPERATING PROCEDURES	2
6.0 PARTS LIST	3-4

ASSEMBLY DRAWING (P/N 110170)
WIRING DIAGRAM (P/N E-1027)
ACCESSORIES/OPTIONS

T. A. PELSUE COMPANY
2500 S. Tejon St., Englewood, CO 80110
Phone: (303) 936-7432 or (800) 525-8460
Fax: (303) 934-5581



PELSUE 1380D PURGE PAC

1.0 GENERAL

1.01 This manual covers the description, operation and maintenance of the Pelsue Model 1380D Purge Pac.

PLEASE TAKE THE TIME TO READ THIS MANUAL BEFORE OPERATING BLOWER.

1.02 The 1380D portable blower, is specifically designed to provide a completely portable source of fresh air. This blower is powered by an 120V AC, 60 HZ electrical source.

2.0 SAFETY PRECAUTIONS

FOR YOUR SAFETY

READ THE FOLLOWING
SAFETY PRECAUTIONS.

2.01 Do not use the blower for other than its intended use.

2.02 Do not wear loose clothing that can become entangled in operating machinery. Do not operate blower without inlet or outlet screen guards in place. (if guards are missing or damaged, contact factory for replacements).

2.03 Do not place fingers or any other object through inlet or outlet screens.

2.04 GROUND FAULT CIRCUIT INTERRUPTER. Always operate a blower from a 120V AC source supplied through a ground fault circuit interrupter receptable, test receptacle for ground fault before plugging in the blower.

2.05 WET HANDS. Never handle energized power cords with wet hands.

2.06 WATER. Never let extension cords or plug connection lay in water. Locate the blower so that it cannot fall into water inadvertently.

2.07 EQUIPMENT. Never use cords with frayed, cut, or brittle insulation. Check the cord for sound connections to the ground fault interrupter plug.

2.08 EXPLOSIVE ATMOSPHERE. Never use this blower in any explosive environment.

2.09 SAVE THESE INSTRUCTIONS.

3.0 MAINTENANCE AND REPAIR

3.01 Be sure the blower is disconnected from the power source before doing any maintenance or repair work on the blower.

3.02 Check all power cords for cuts, frayed ends, or brittle insulation. See the enclosed parts list for the replacement cord part number.

3.04 For parts or service information, contact:

T.A. Pelsue Service Department
2500 South Tejon Street
Englewood, Colorado 80110
Phone 303-936-7432 or
1-800-525-8460
Fax (303) 934-5581

4.0 PRODUCT DESCRIPTION:

The Pelsue Model 1380D Axial Blower

A. The Model 1380D Blower is a single-speed, fresh-air blower for use in moderate conditions.

4.01 DIMENSIONS & WEIGHTS

Width: 13" (330 mm)
Length: 14.5" (368 mm)
Height: 16.75" (425 mm)
Weight: 32.75 lbs. (14.93 kg)

4.02 MODEL SPECIFICATIONS & PERFORMANCE:

Voltage: 120V AC, 60 HZ

AMPERAGE: 4
H.P.: 1/3 (.248KW)
STRAIGHT HOSE: 1077CFM (30.50M3/MIN)
ONE 90D BEND: 917 CFM (25.97M3/MIN)

5.0 START UP & OPERATING PROCEDURES

READ ENTIRE START UP & OPERATING PROCEDURE BEFORE OPERATING BLOWER.

5.01 PRE-START PROCEDURE

CAUTION: Read, 2.0 SAFETY PRECAUTIONS.

A. Check blower inlet and outlet guard screens for obstructions. Check immediate area around blower for objects that could be sucked into the blower inlet and remove from area.

B. Extend and place blower hose as required. **BE SURE NO TOXIC FUMES ARE BLOWN INTO A CONFINED SPACE.**

5.02 START PROCEDURE

A. Plug in blower power cord to a GFI protected 120V AC outlet.

B. Do not leave blower plugged in or operating while unattended.

5.03 SHUT-OFF PROCEDURE

When blower operation is no longer required unplug the power cord. Coil and store the power cord in the opening between the base and the blower housing.

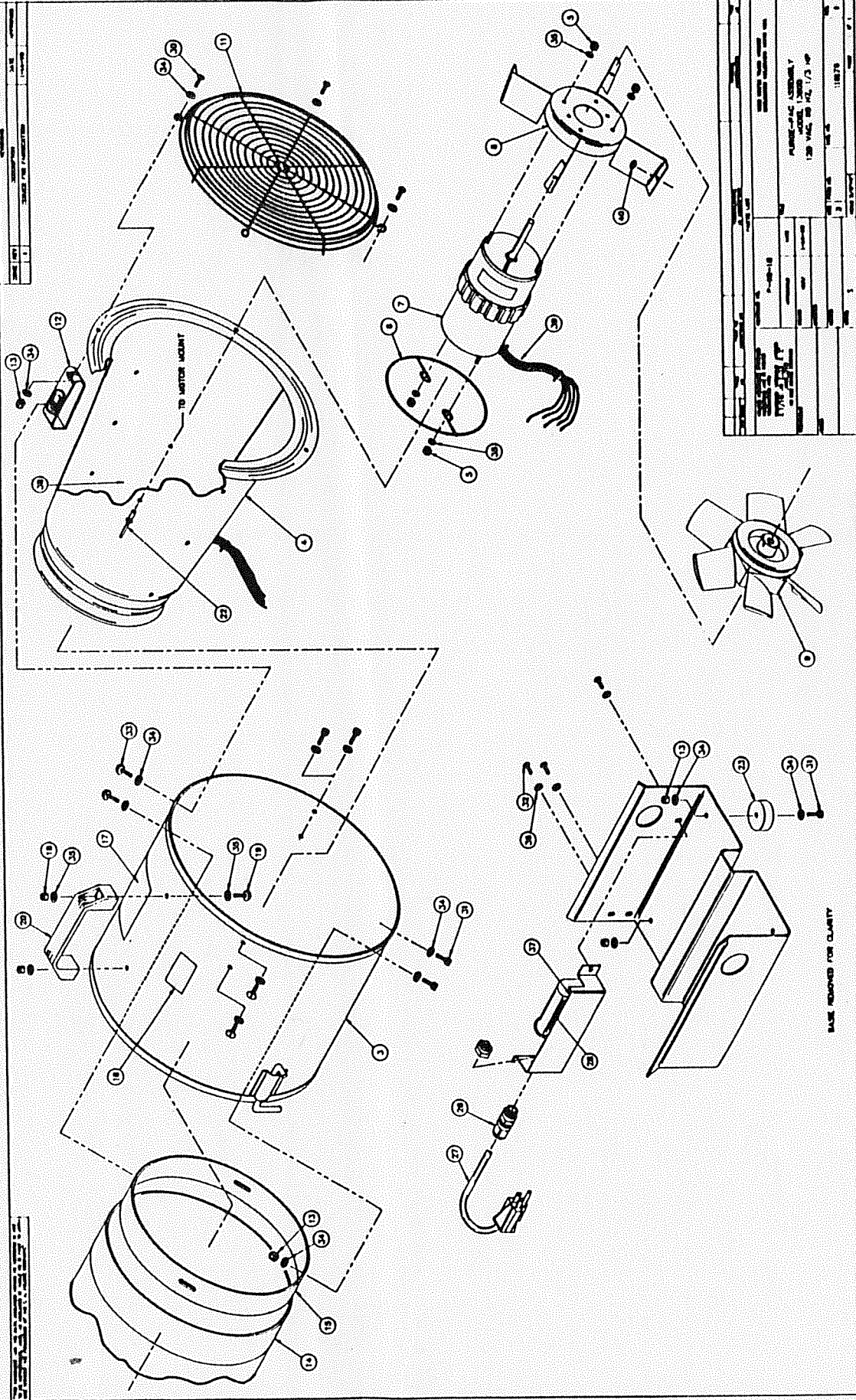
6.0 PARTS LIST - 1380D PURGE PAC

<u>ITEM #</u>	<u>PART #</u>	<u>DESCRIPTION</u>	<u>QTY.</u>
1	110170	Dwg: Assembly 1380D	1
3	101143-002	Weldment, Purge Pac, 1380 Series	1
4	110006-001	Housing Weldment - Housing with inlet spinning	1
5	100060-007	Locknut - 3-32 UNC, Nylon insert	6
6	110000-001	Guard - Blower Outlet, wire ring	1
7	110002-001	Motor - Electric, 120 VAC, 1/3 HP, Axial, .375" dia. shaft	1
8	110003-001	Weldment - motor mount	1
9	110001-001	Fan Blade - Composite, 10.00" Dia. x 3.75" Dia. Shaft	1
10	68N-016700	Screw - Machine Truss Hd. 1/4 -20 UNC x 3/4 plated	4
11	104977-001	Grille - Intake, Blower, circular wire (13 ga/.090" Dia) Nickle plated with 1" offset	1
12	101145-001	Bracket - Mounting, housing, purge blower	4
13	100060-010	Locknut - Hex, 1/4-20 UNC, Plated, Nylon Insert	12
14	101051-001	Hose - Blower, 12" dia. x 8'	1
15	101142-001	Clamp - Hose, Purge Blower, 1380B/1380HB	1
16	107648-001	Decal - American Flag "MADE IN AMERICA", 1.50" x 2"	1
17	110171-001	Decal - I.D. & Serial Plate, 1380D Purge Pac, 120VAC, 60 HZ, 1/3 HP, 3A, Axial	1
18	100060-008	Locknut - Hex, 10-24 UNC, Plated, Nylon Insert	2
19	103978-000	Screw - Machine, Truss Head 10-24 x 5/8" Plated	2
20	106942-001	Handle - Pull Type, Black Plastic	1
21	100050-005	Washer - Flat, #8, Type A, W, Plated	6

6.0 PARTS LIST - 1380D PURGE PAC

<u>ITEM #</u>	<u>PART #</u>	<u>DESCRIPTION</u>	<u>QTY.</u>
22	103824-001	Rivet - Blind (Pop), Stainless Steel, Flange Dome, .188" dia. x .126" - .250" grip range, .45" long	4
23	100188-001	Foot - Rubber, 3/4" OD, With Washer	4
24	106905-000	Velcro- Flex Pile 1" wide, pressure sensitive adhesive backing, white	3
25	106904-000	Velcro- Flex, Hook, 1" Wide, pressure sensitive adhesive backing, white	3
26	103773-001	Strain Relief - .37" - .43" Cable Dia., .125" Max. panel thickness	1
27	26E-005700	Cord & Plug Set - 3 wire, 16/3 So. 12" Long	1
28	110007-001	Capacitor - 7.5 MFD, 370 VAC, 60 Hz.	1
29	109348-001	Decal - Arrow, Red, for Model 309 Plank Supports	
30	101427-001	Screw - Cap, Hex Head, 1/4 - 20 UNC x 1/2 Plated	4
31	100604-008	Screw - Hex Head 1/4 - 20 UNC x 3/4 Plated	4
32	68N-002800	Screw - Machine, Truss Head, 8-32 UNC x 3/8 Plated	3
33	68N-002600	Screw - Machine, Truss Head, 1/4 - 20 UNC x 1/2 Plated	4
34	100050-009	Washer - Flat, 1/4", Type A, W, Plated	28
35	100050-023	Washer - Flat, #10 SAE, Zinc Plated	4
36	68N-004200	Washer - Lock, Internal Tooth, #8, Plated	3
37	110192-001	Switch Box - 1380D Purge Pac, Switch & Cap. Mtg. & Cover	1
38	62E-011200	Grommet - Rubber, .375" ID x .5" Groove Dia., .75" OD	2
39	101550-000	Loom - Split, Convoluted, 1/2" Dia.	1
40	104151-001	Washer - Rivet Back Up, 7/32" ID x 7/16" OD, Stainless Steel	4

PART NO. 11879
 QUANTITY 1
 DRAWING FOR IDENTIFICATION

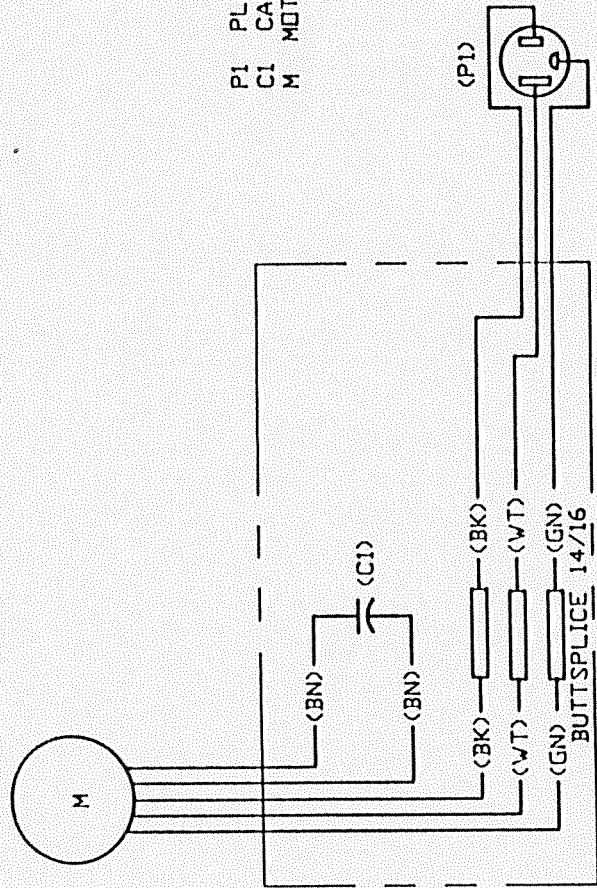


PART NO. 11879 QUANTITY 1 DRAWING FOR IDENTIFICATION	PART NO. 11879 QUANTITY 1 DRAWING FOR IDENTIFICATION	PART NO. 11879 QUANTITY 1 DRAWING FOR IDENTIFICATION	PART NO. 11879 QUANTITY 1 DRAWING FOR IDENTIFICATION	PART NO. 11879 QUANTITY 1 DRAWING FOR IDENTIFICATION	PART NO. 11879 QUANTITY 1 DRAWING FOR IDENTIFICATION
--	--	--	--	--	--

MAKE ROOM FOR CLARITY

THIS DOCUMENT AND THE DATA DISCLOSED HEREIN OR HEREWITH IS NOT TO BE REPRODUCED, USED, OR DISCLOSED IN WHOLE OR IN PART TO ANYONE WITHOUT THE PERMISSION OF THE T. A. PELSUE COMPANY.

ZONE (REV)	REVISIONS DESCRIPTION	DATE	APPROVED
1	UPDATE TO FASCO MOTOR	01-21-93	
2	DELETE SWITCH	04-07-93	



LEGEND

- P1 PLUG, 120 VAC, 60 HZ
- C1 CAPACITOR, 7.5MFD, 370 VAC, 60 HZ.
- M MOTOR, 1/3 HP. AXIAL

UNLESS OTHERWISE NOTED
 DIMENSIONS ARE IN INCHES
 FINISHES UNLESS NOTED
 1/8" = 1" UNLESS NOTED
 DO NOT SCALE DRAWING

CONTRACT NO. P-08-18		2500 SOUTH TEJON STREET ENGLEWOOD COLORADO 80110 USA	
APPROVALS	DATE	TITLE	
F. J. SCHWELL	11-03-93	WIRING DIAGRAM	
CHECKED		1300D SERIES BLOWERS	
DESIGNED		SIZE	DWG. NO.
DATE		3	E-1027
SCALE	1" = 1'	SHEET	071