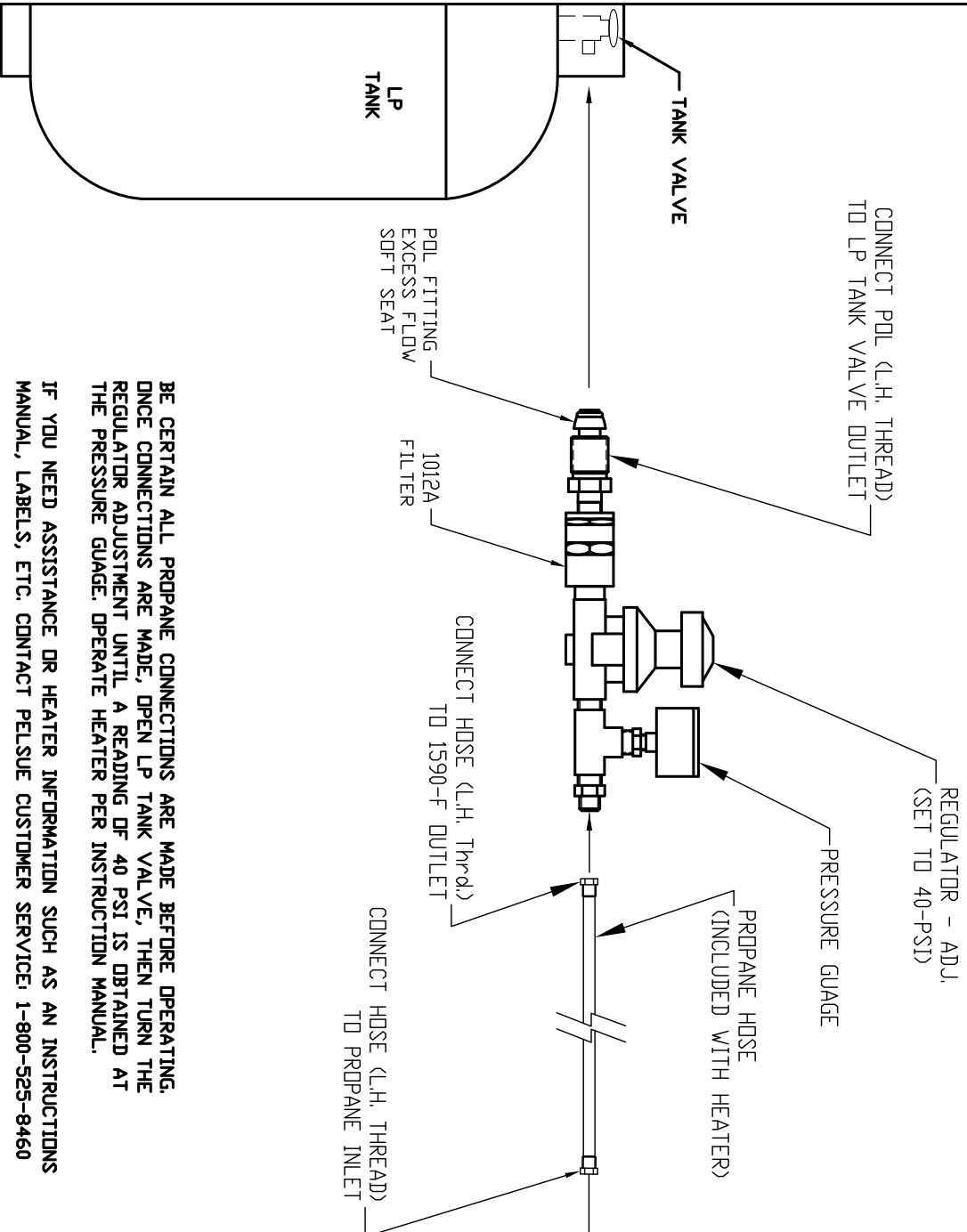


OPERATING INSTRUCTIONS

PELSUE MODEL 1590-F REGULATOR ASSEMBLY

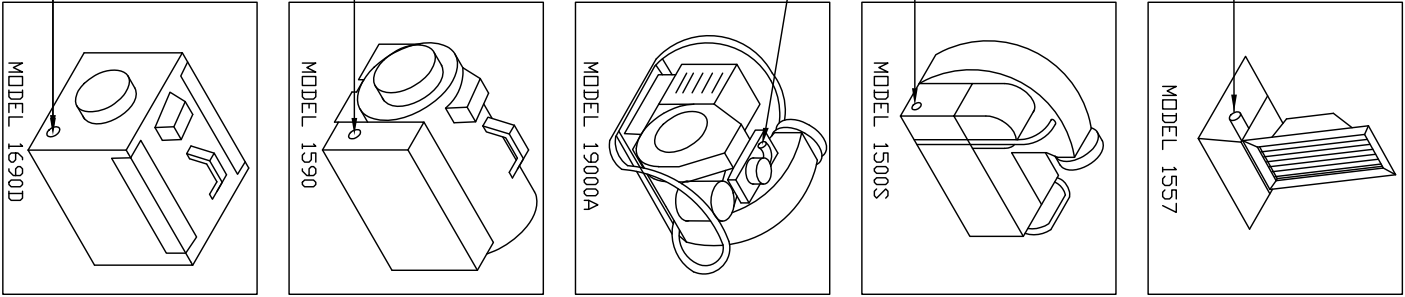
FOR USE WITH 1557, 1590, 1690 & 1500S HEATERS

(SOLD SEPARATELY)



BE CERTAIN ALL PROPANE CONNECTIONS ARE MADE BEFORE OPERATING. ONCE CONNECTIONS ARE MADE, OPEN LP TANK VALVE, THEN TURN THE REGULATOR ADJUSTMENT UNTIL A READING OF 40 PSI IS OBTAINED AT THE PRESSURE GAUGE. OPERATE HEATER PER INSTRUCTION MANUAL.

IF YOU NEED ASSISTANCE OR HEATER INFORMATION SUCH AS AN INSTRUCTIONS MANUAL, LABELS, ETC. CONTACT PELSUE CUSTOMER SERVICE: 1-800-525-8460



OPERATING INSTRUCTIONS

PELSUE MODEL 1590-F REGULATOR ASSEMBLY

FOR USE WITH 1500S, 1557, 1590 & 1690D HEATERS (SOLD SEPARATELY)

