

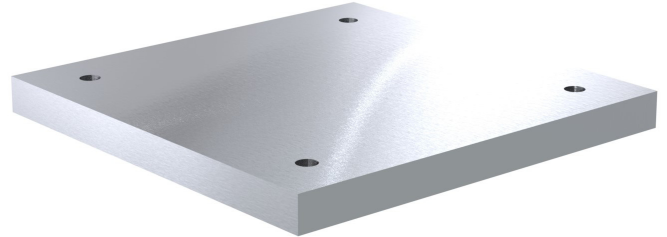


# Product Specifications

**Model: #FB-BT1 Base Plate - Small Threaded Weld-On (9" Square) for Rotating Fall Arrest Post Base**

## General Specifications:

1. This Weld-On Base Plate is to be used in conjunction with Pelsue Model #FB-VA1 Rotating Base Plate Assembly in order to mount PELSUE brand fall arrest posts to work surfaces.
2. Plate is to be welded on to surface adhering to all PELSUE guidelines



## Materials & Construction:

General Construction..... ASTM A-36 Carbon Steel

## Product Weight:

Weight..... 17.2 LBS. (7.8 Kg)

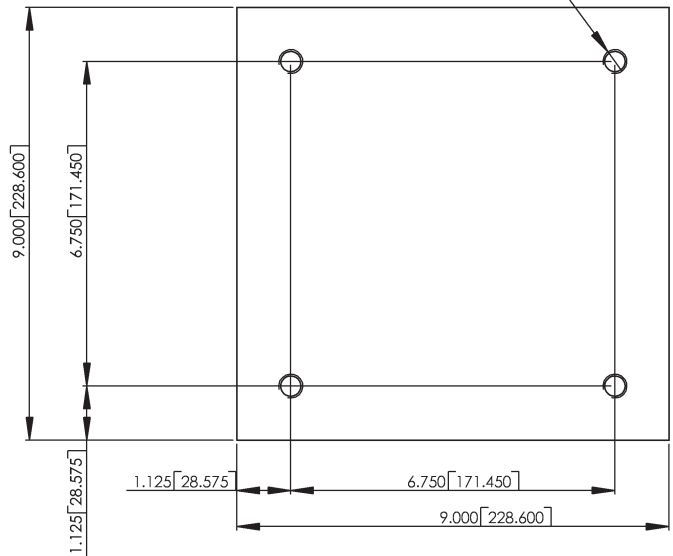
## Product Ratings & Limitations:

When Installed following the mounting requirements given on this page, the PELSUE Model #FB-BT1 Base Plate is rated as a fall arrest anchorage according to the following table as per OSHA 1926 & ANSI A10.14.

		Lifeline Connection Height	
		53 Inches [1346 mm]	70 Inches [1778 mm]
Angle of Pull from Vertical (degrees)	10	3 People	3 People
	15	3 People	3 People
	20	3 People	3 People
	25	3 People	3 People
	30	3 people	3 People
	35	3 People	2 People
	40	3 People	2 People
	45	2 People	2 People
	50	2 People	2 People
	55	2 People	1 Person

**\*\*This Table Defines a "person" as being 350 LBS.(159 Kg.) Maximum weight with all equipment and tools & each person must be attached to the structure via a 900 LB. MAF(Maximum Arrest Force) Shock Absorbing Device**

4X) 1/2"-13 UNC Threaded Holes



Dimensions displayed in; inches [millimeters]

**TOP VIEW**

## Mounting Requirements:

In order to comply with all standards and stated ratings, the FB-BT1 Base Plate must be installed by a certified welder following the requirements given within PELSUE Document #500588-001; "Guidelines for Installation of PELSUE Brand Weld-On Fall Arrest Post Base Plates." Failure to follow guidelines will negate all claims of compliance and/or certification

**PELSUE**  
**T.A. Pelsue Company**  
 2500 S. Tejon St.  
 Englewood, CO 80110  
 Ph: 1-800-525-8460, (303) 936-7432  
 Fax: (303)934-5581  
 Web: www.pelsue.com E-mail: sales@pelsue.com