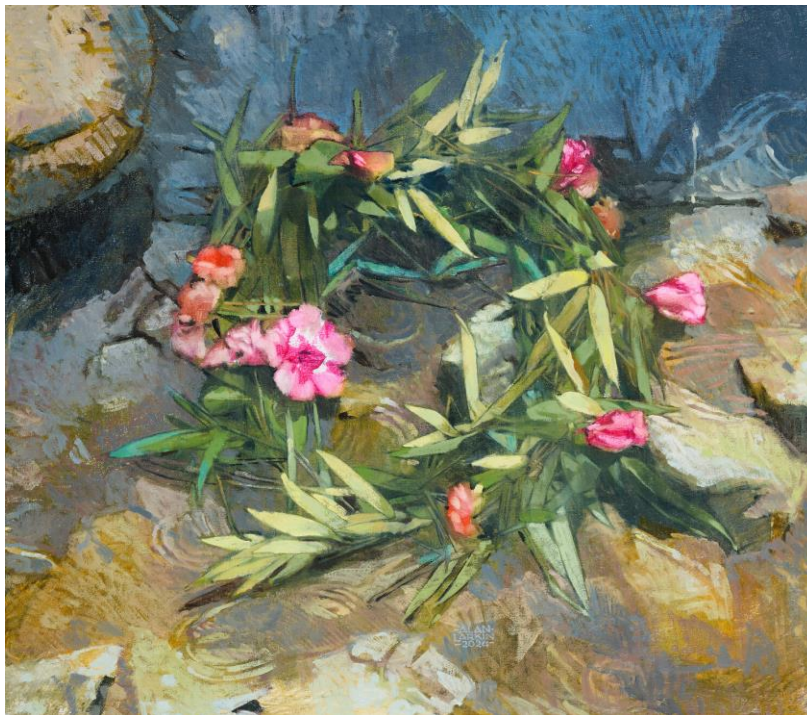




FOR IMMEDIATE RELEASE
Images available upon request.

94th Annual Juried Exhibition of the Indiana Artists Club, Inc. is Now Open at the Indianapolis Museum of Art



Best of Show, 2025 Annual Juried Exhibition. Alan Larkin, *River's Edge Wreath*, oil. Courtesy of the artist. © Alan Larkin.

INDIANAPOLIS, IN, April 2, 2026—The [*94th Annual Juried Exhibition of the Indiana Artists Club, Inc.*](#) opened at Newfields today, featuring 45 artworks by Hoosier professional artists who live and work in Indiana. The juried exhibition has been a feature of the Indiana Artists Club for 94 years, serving their mission of exhibiting artwork and engaging with the community. It has been presented annually at Newfields since 1992 reflecting our ongoing commitment to showcasing works by Indiana artists

Founded in 1917 by artists in Brown County, Indiana—including several members of the original Hoosier Group—the Indiana Artists Club, Inc. has long supported artists across the state through exhibitions, workshops, and community engagement.

This year's exhibition was curated by award-winning artist and instructor, Barbara Schilling, from Grand Rapids, Michigan. She began her career as a conservator, later transitioning to work as a full-time artist.

The exhibition features works in a variety of mediums, including paintings, sculptures and mixed-media. The juried exhibition will be on view in Waller Gallery on Floor 1 of the Indianapolis Museum of Art until May 23, 2026 and is free to Members and guests.

###

About Newfields:

Newfields offers dynamic experiences with art and nature for guests of all ages. The 152-acre cultural campus features art galleries, lush gardens, a historic home, performance spaces, a nature preserve and sculpture park. From inspiring exhibitions in the IMA Galleries, to concerts in The Tobias Theater, to a stroll through The Garden with a glass of something cold, guests are invited to interact with art and nature in exciting new ways. Newfields is home to the Indianapolis Museum of Art, among the ten largest and ten oldest general art museums in the nation; the Lilly House, a National Historic Landmark; The Garden, featuring 40 acres of contemporary and historic gardens, a working greenhouse and an orchard; and The Virginia B. Fairbanks Art & Nature Park, one of the largest art and nature parks in the country. The Newfields campus extends outside of Indianapolis with Miller House and Garden in Columbus, Ind. one of the nation's most highly regarded examples of mid-century Modernist architecture. For more information, visit [DiscoverNewfields.org](https://www.discovernewfields.org).

Media Contacts:

Emily Sogard
Assistant Director of Communications
317-224-6330
esogard@discovernewfields.org

John Yelkich
Public Relations Coordinator
317-426-7504
jyelkich@discovernewfields.org