

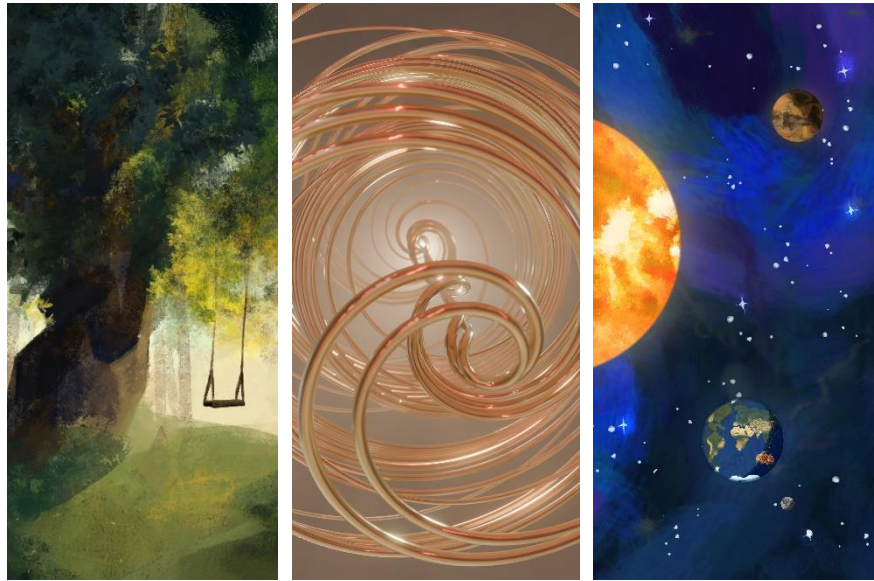


**FOR IMMEDIATE RELEASE**

*Images available upon request.*

***THE LUME Indianapolis Debuts Three New Featurettes from Local Students***

*Six artists from Herron School of Art + Design displaying artwork in THE LUME starting June 27*



**INDIANAPOLIS**, June 20, 2025 — Three original artworks from local students at the Herron School of Art + Design are set to run alongside [\*THE LUME Indianapolis\* featuring \*Connection: Land, Water, Sky – Art & Music from Indigenous Australians\*](#) beginning the night of [\*Artful Party: Summer\*](#) on June 27. *Echoes of Home*, *Harmonia* and *Evren* were commissioned by the Indianapolis Museum of Art at Newfields to showcase the talents of these early-career artists.

The launch of these featurettes marks the second series of featurettes to be displayed in *THE LUME Indianapolis*. Each digitally immersive artwork has a runtime of roughly three minutes and includes both audio and video elements consistent with every exhibition in the fully immersive gallery.

"We are proud to showcase the rising talent of artists from the Herron School of Art + Design students," said Belinda Tate, the Melvin & Bren Simon Director of the Indianapolis Museum of Art. "This exhibition reflects our continued commitment to supporting emerging regional artists and highlights the strength of our ongoing partnership with Herron."

### **Echoes of Home** by Jansing Lunato and Macy Oberhart



Lunato [left] and Oberhart [right], both from Indianapolis, drew on the nostalgic themes of home, childhood and growth. Lunato, who led visuals, wrote, "I took scenes and everyday objects and represented them in a way that reflects the deep sentiment I associate with my childhood. I invite the audience to literally step into the work, offering them a space to reflect on their own memories and the emotions they evoke."

Oberhart, who led sound design, wrote, "I used a lot of audio samples of things that you may not even think about when going through your day."

*Echoes of Home* is made to showcase multiple important pieces of a child's life and imagination."

### **Harmonia** by Gregory Fisher-Fox and Maxwell Arney



The range of emotions that humans face on a daily basis: visualized in a digitally immersive space – that is what Fisher-Fox [left] and Arney [right] set out to accomplish in *Harmonia*. This work was a deeply personal creation. Fisher-Fox, from Beech Grove, wrote, "I recognized the influence of my own anxiety. That led me to create a narrative rooted in emotional cycles."

Arney's sound composition complements the visuals with musical elements that capture every corner of the space. Arney, from Indianapolis, writes, "Without the ability to spread out some of the musical elements across the space, the experience simply wouldn't be the same."

### **Evren** by Kyleigh Sprout and Regan Wakeman



An otherworldly experience distilled into the minutes-long featurette was made possible by the imaginations of Kyleigh Sprout [left] and Regan Wakeman [right]. Their focus on space, stars and speculative cosmology is what sets this work apart. Sprout, from Franklin, IN, asks, "How would it look if you were surrounded by planets and astronomical events? My main goal was to have a recognizable galaxy but have it textured in a painterly way that would cause the audience's minds to wonder and imagine."

Regarding the sound design, Wakeman, from Indianapolis, wrote, "Fire-crackling sounds move in a circular motion around the listener creating a surreal sensation of being engulfed by the sun. We simply want to create space for questions, for awe, and for reflection on what lies both beyond and within us."

Celebrate the opening of the featurettes and several other exhibitions at [Artful Party: Summer](#) on the evening of Friday, June 27. Live entertainment, artfully paired hors d'oeuvres from Newfields culinary staff and a great evening around lovers of art & nature awaits.

**Image Credits [From Left to Right]:** Still image from *Echoes of Home*, 2025. Commissioned by the Indianapolis Museum of Art at Newfields for *THE LUME Indianapolis* created by Grande Experiences. © Jansing Lunato and Macy Oberhart.

Still image from *Harmonia*, 2025. Commissioned by the Indianapolis Museum of Art at Newfields for *THE LUME Indianapolis* created by Grande Experiences. © Gregory Fisher-Fox and Maxwell Arney.

Still image from *Evren*, 2025. Commissioned by the Indianapolis Museum of Art at Newfields for *THE LUME Indianapolis* created by Grande Experiences. © Kyleigh Sprout and Regan Wakeman.

###

**About Newfields:**

Newfields offers dynamic experiences with art and nature for guests of all ages. The 152-acre cultural campus features art galleries, lush gardens, a historic home, performance spaces, a nature preserve and sculpture park. From inspiring exhibitions in the IMA Galleries, to concerts in The Tobias Theater, to a stroll through The Garden with a glass of something cold, guests are invited to interact with art and nature in exciting new ways. Newfields is home to the Indianapolis Museum of Art, among the ten largest and ten oldest general art museums in the nation; the Lilly House, a National Historic Landmark; The Garden, featuring 40 acres of contemporary and historic gardens, a working greenhouse and an orchard; and The Virginia B. Fairbanks Art & Nature Park, one of the largest art and nature parks in the country. The Newfields campus extends outside of Indianapolis with Miller House and Garden in Columbus, Ind. — one of the nation's most highly regarded examples of mid-century Modernist architecture. For more information, visit [DiscoverNewfields.org](https://discovernewfields.org).

**Media Contacts:**

Mattie Wethington  
Director of Communications  
317-923-1331 ext. 265  
[mwethington@discovernewfields.org](mailto:mwethington@discovernewfields.org)

Jack Wright  
Public Relations Manager  
317-923-1331 ext. 174  
[jhwright@discovernewfields.org](mailto:jhwright@discovernewfields.org)