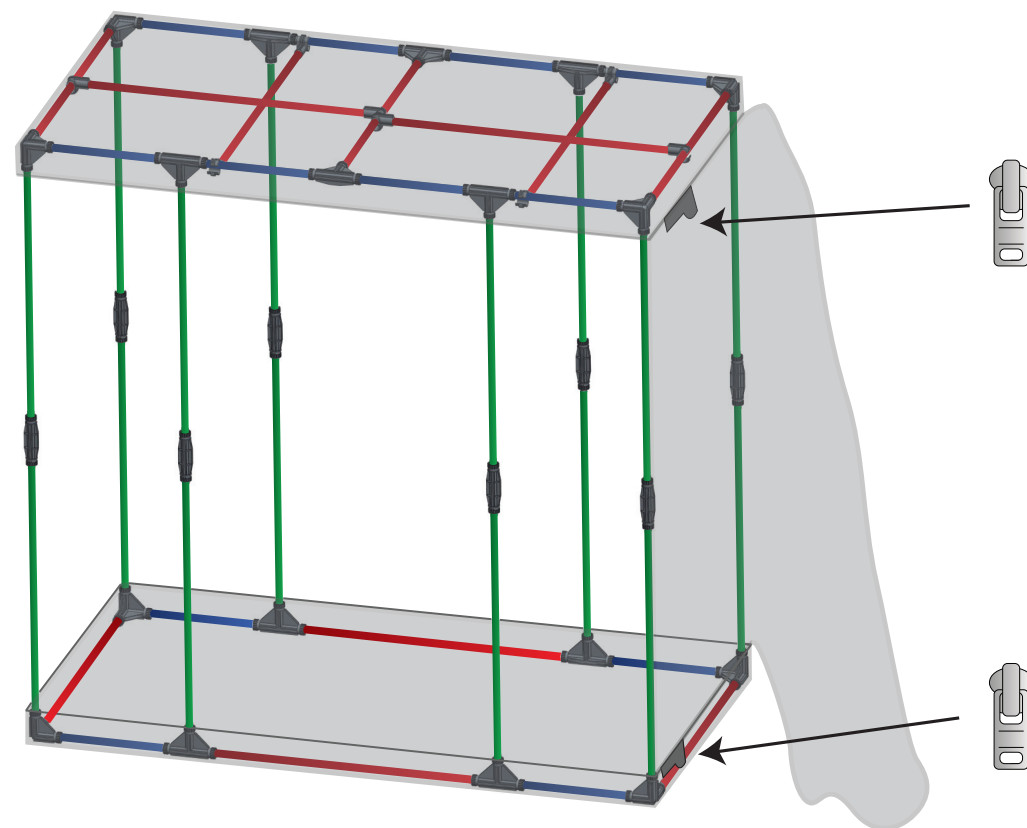


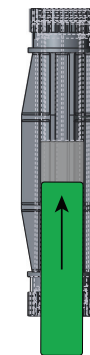
Step 5

Connect wall panel zip to the roof and base zips (under Velcro flaps).

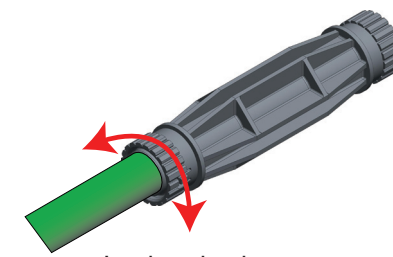


Assembly Instructions

Two Person Assembly Recommended



Insert pole into connector
(ensure poles are fully inserted)



Lock poles into connectors
by rotating left or right

NOTE



If unable to Insert pole



CLICK!
Rotate locking
mechanism until it clicks



Insert pole into connector
(ensure poles are fully inserted)

Equipment Hangers

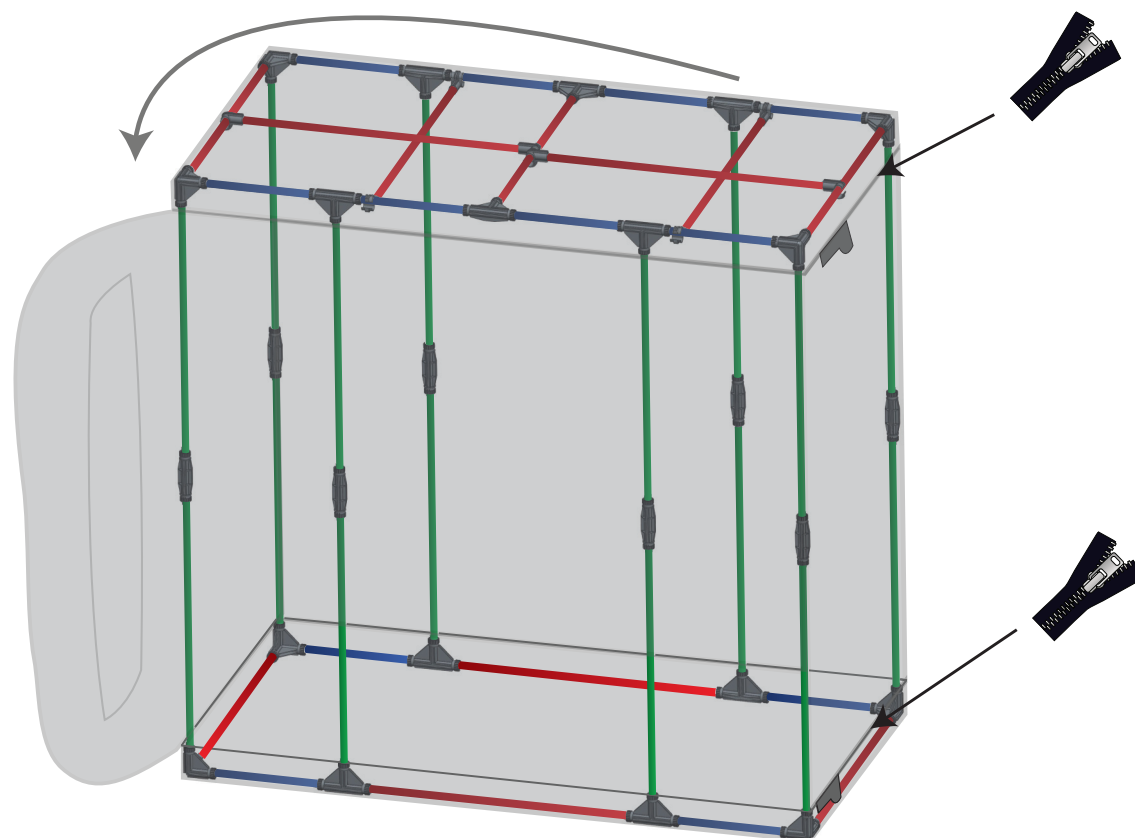
Lower Equipment Hanger



Upper Equipment Hanger

Step 6

Zip the wall panel to the roof and base.



Parts List



Red Pole
x11



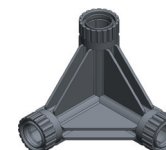
Blue pole
x12



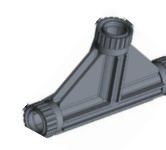
Green Pole
x16



Straight
Connector
x8



3-Way
Corner
x8



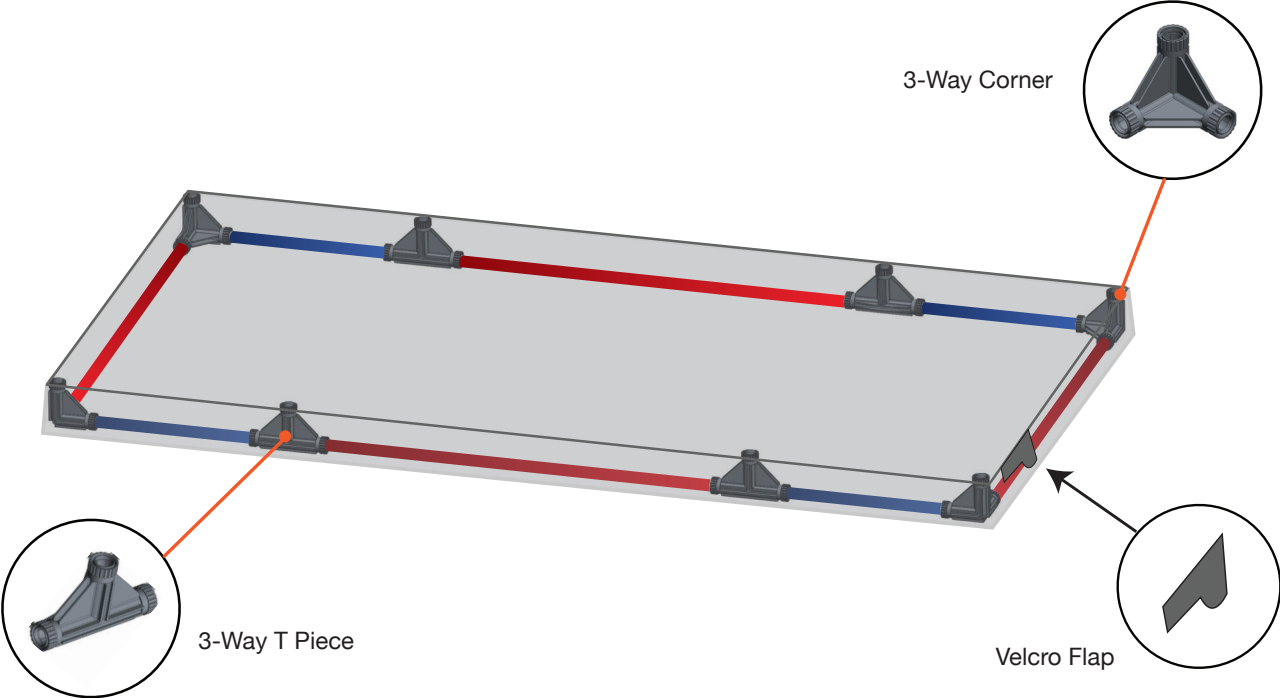
3-Way
T Piece
x10



Equipment
Hanger Ends
x8

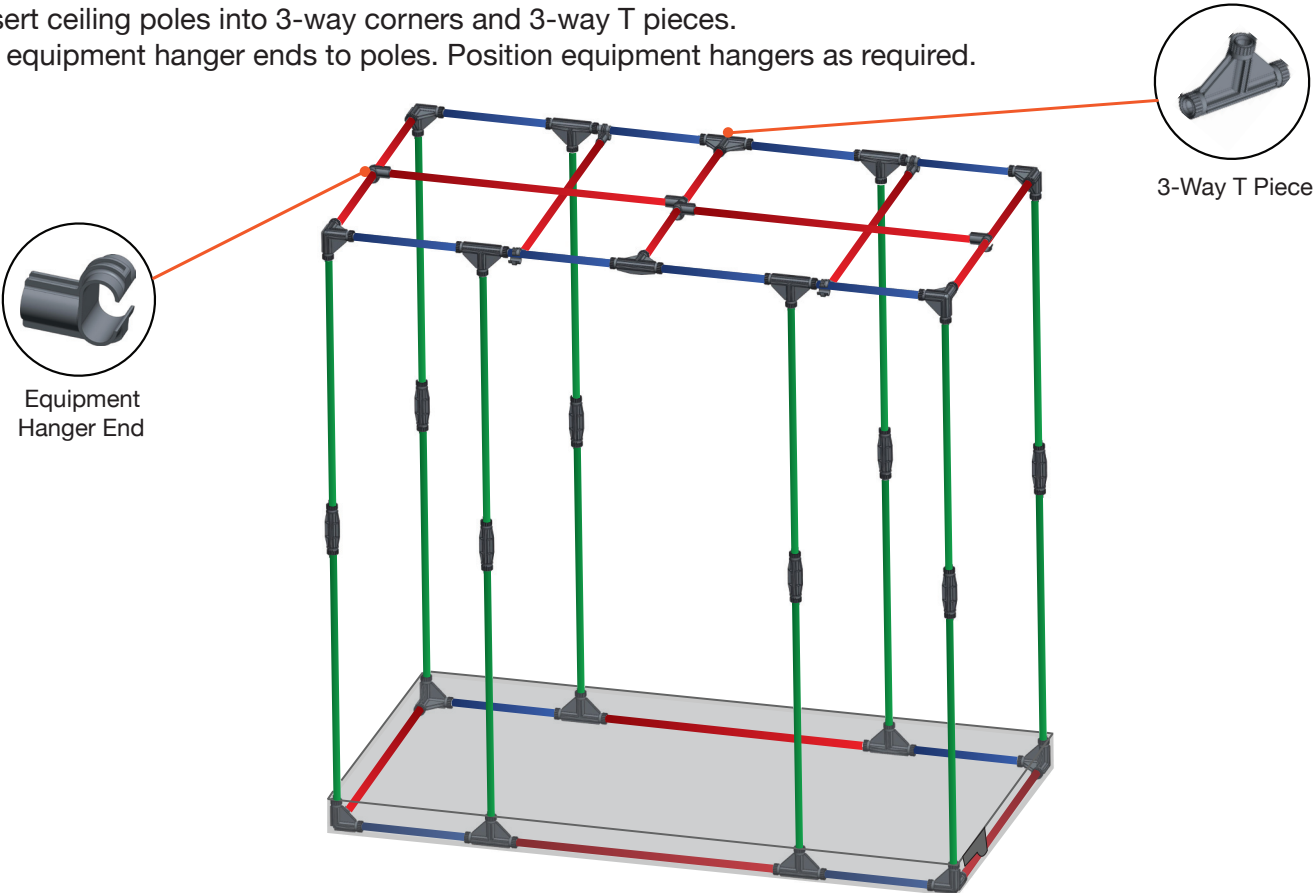
Step 1

Lay out base ensuring Velcro flap is in front right corner.
Assemble floor poles, 3-way corners and 3-way T pieces as shown.



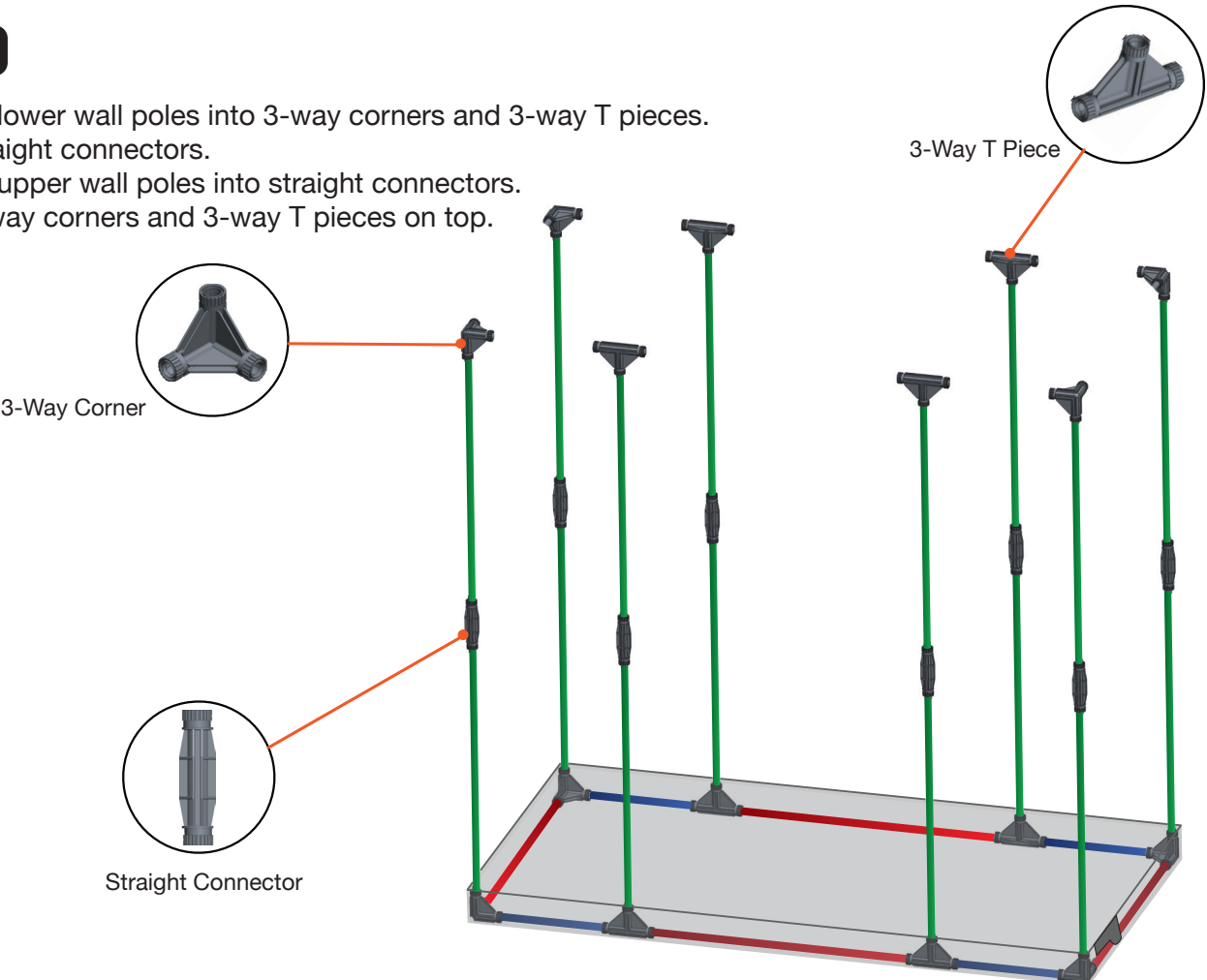
Step 3

Insert ceiling poles into 3-way corners and 3-way T pieces.
Fit equipment hanger ends to poles. Position equipment hangers as required.



Step 2

Insert lower wall poles into 3-way corners and 3-way T pieces.
Fit straight connectors.
Insert upper wall poles into straight connectors.
Fit 3-way corners and 3-way T pieces on top.



Step 4

Fit roof ensuring Velcro flap is in front right corner.

