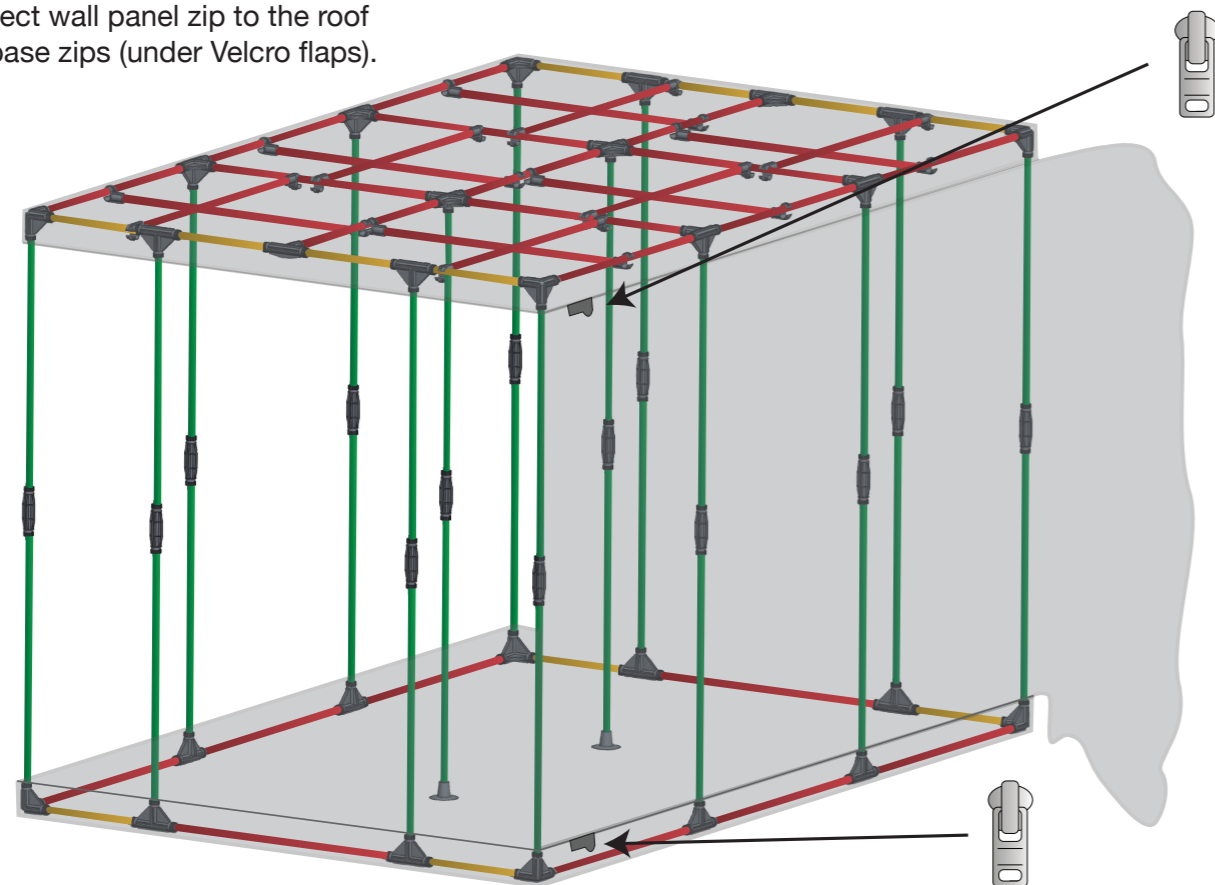


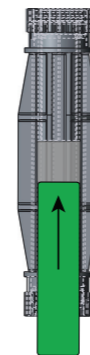
Step 5

Connect wall panel zip to the roof and base zips (under Velcro flaps).

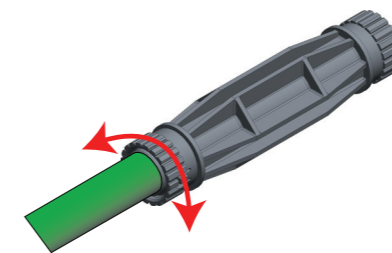


Assembly Instructions

Two Person Assembly Recommended



Insert pole into connector
(ensure poles are fully inserted)



Lock poles into connectors
by rotating left or right

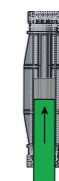
NOTE



If unable to Insert pole



CLICK!
Rotate locking
mechanism until it clicks



Insert pole into connector
(ensure poles are fully inserted)

Equipment Hangers

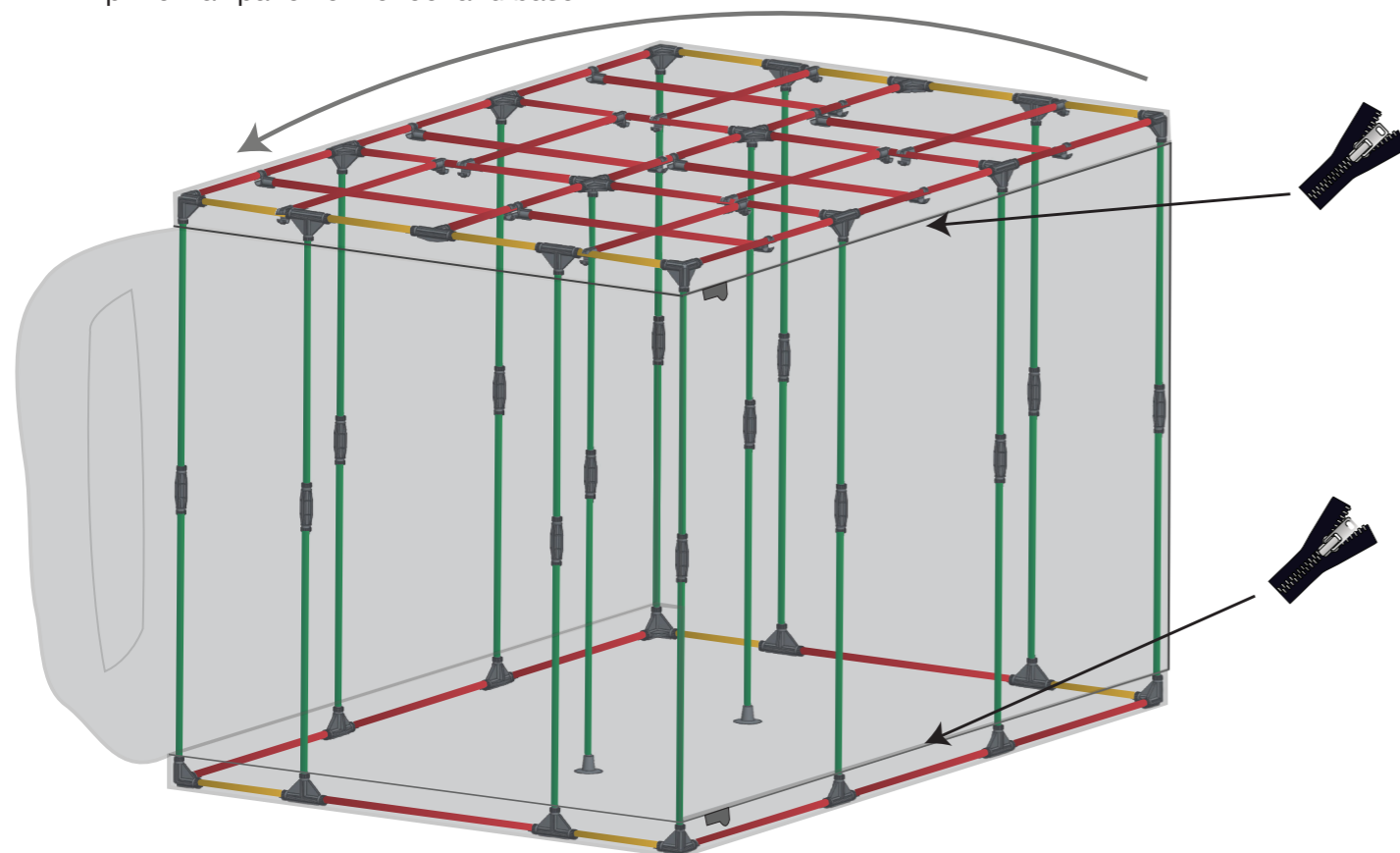
Lower Equipment Hanger



Upper Equipment Hanger

Step 6

Zip the wall panel to the roof and base.



Parts List



Red Pole
x33



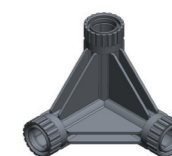
Yellow Pole
x12



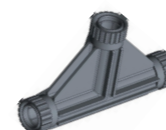
Green Pole
x28



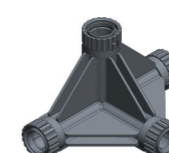
Straight
Connector
x14



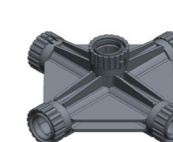
3-Way
Corner
x8



3-Way
T Piece
x14



4-Way
Join
x4



5-Way
Join
x2



Equipment
Hanger Ends
x24

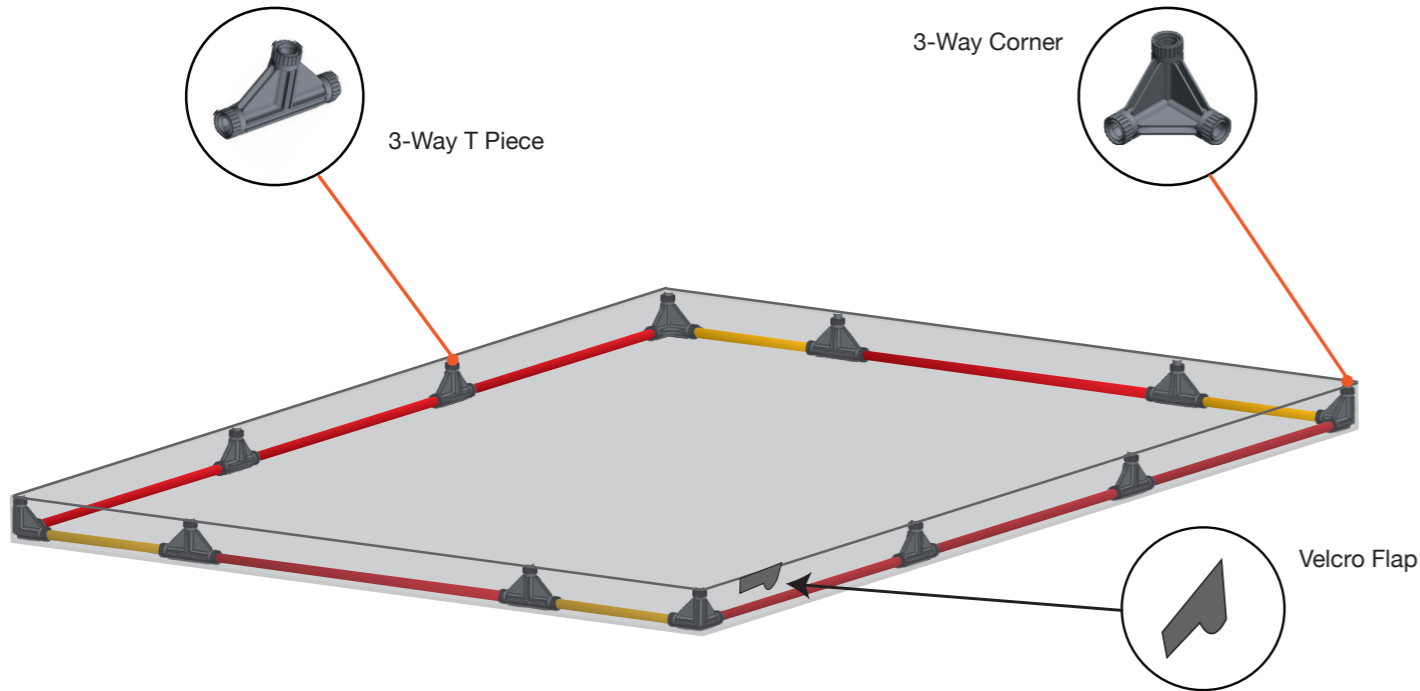


Support Pole
Foot
x2

mammothtents.nl
Elite 360S

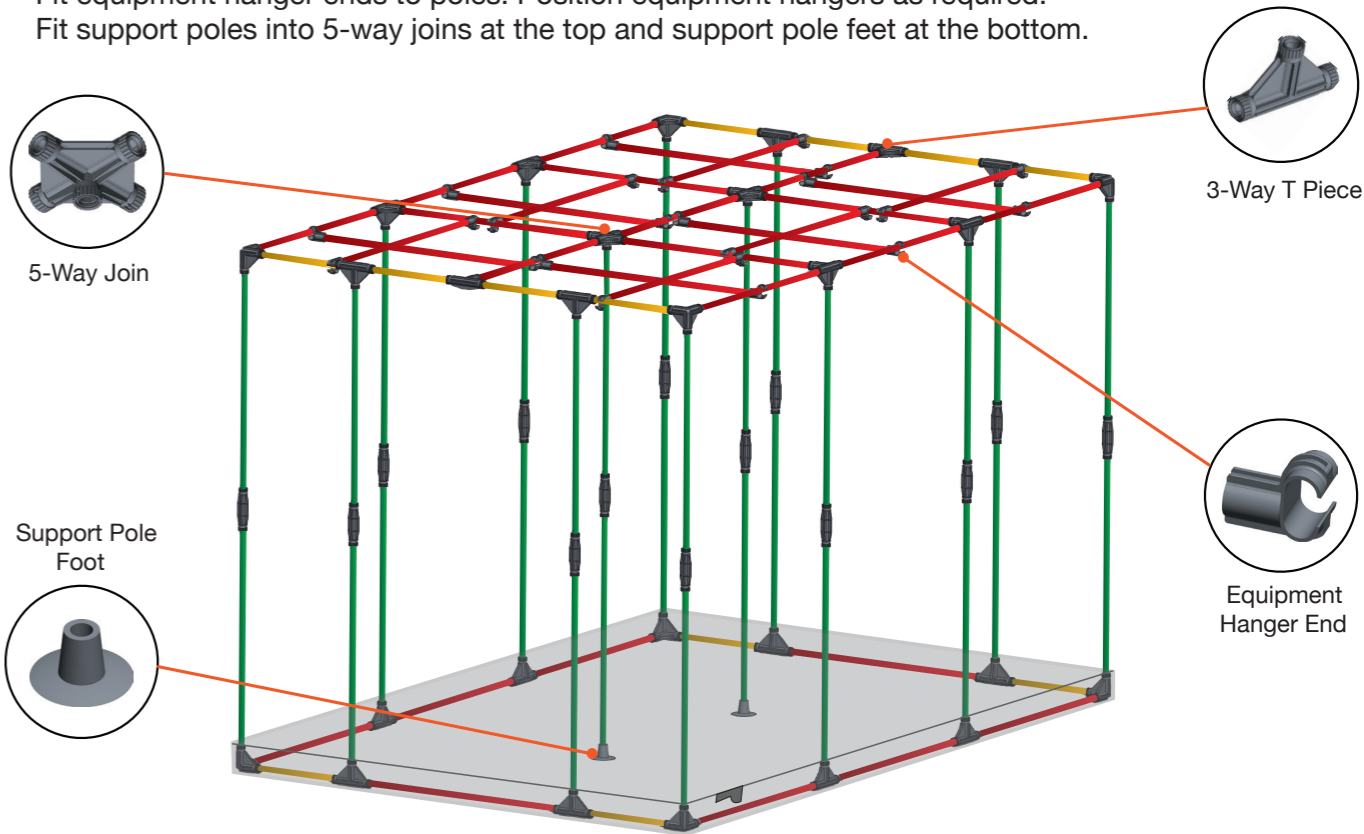
Step 1

Lay out base ensuring Velcro flap is in front right corner.
Assemble floor poles, 3-way corners and 3-way T pieces as shown.



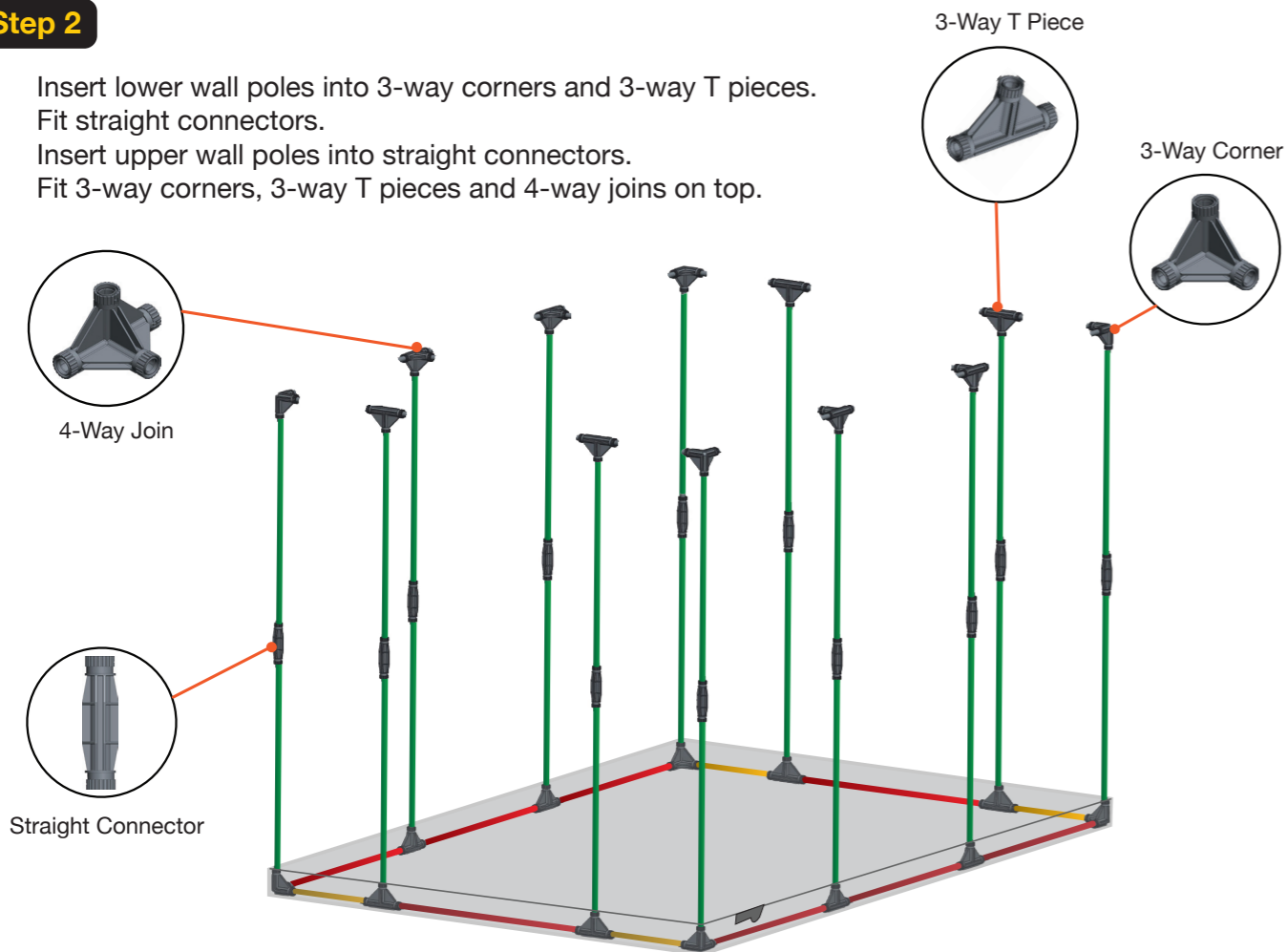
Step 3

Insert ceiling poles into 3-way corners, 3-way T pieces, 4-way joins and 5-way joins.
Fit equipment hanger ends to poles. Position equipment hangers as required.
Fit support poles into 5-way joins at the top and support pole feet at the bottom.



Step 2

Insert lower wall poles into 3-way corners and 3-way T pieces.
Fit straight connectors.
Insert upper wall poles into straight connectors.
Fit 3-way corners, 3-way T pieces and 4-way joins on top.



Step 4

Fit roof ensuring Velcro flap is in front right corner.

