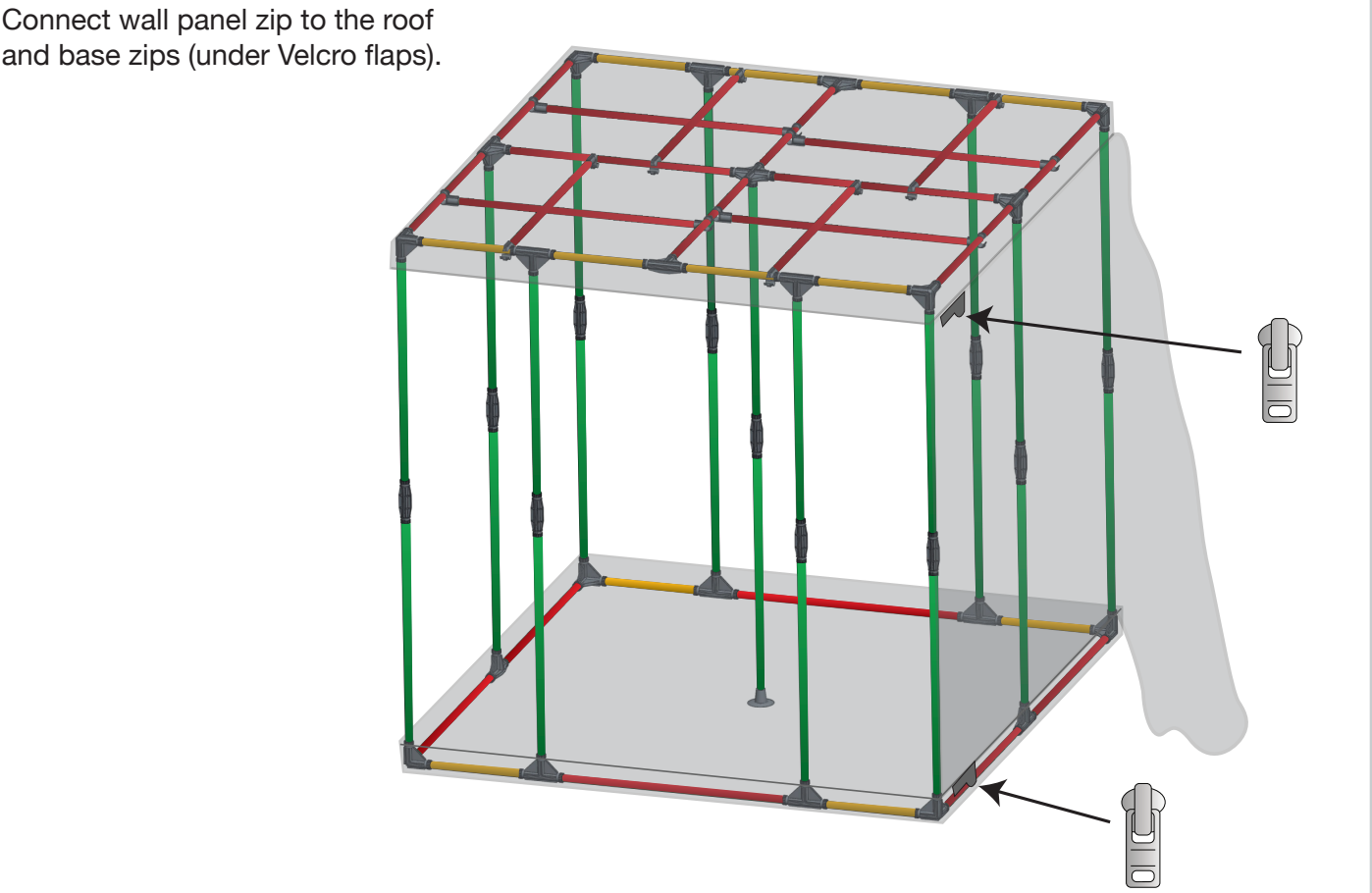
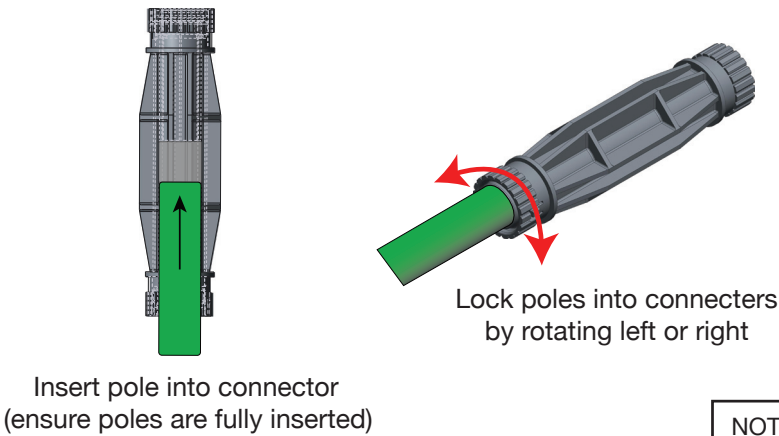


Step 5

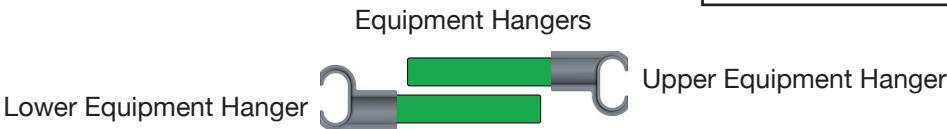
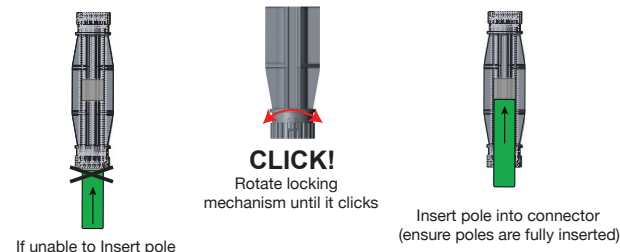


Assembly Instructions

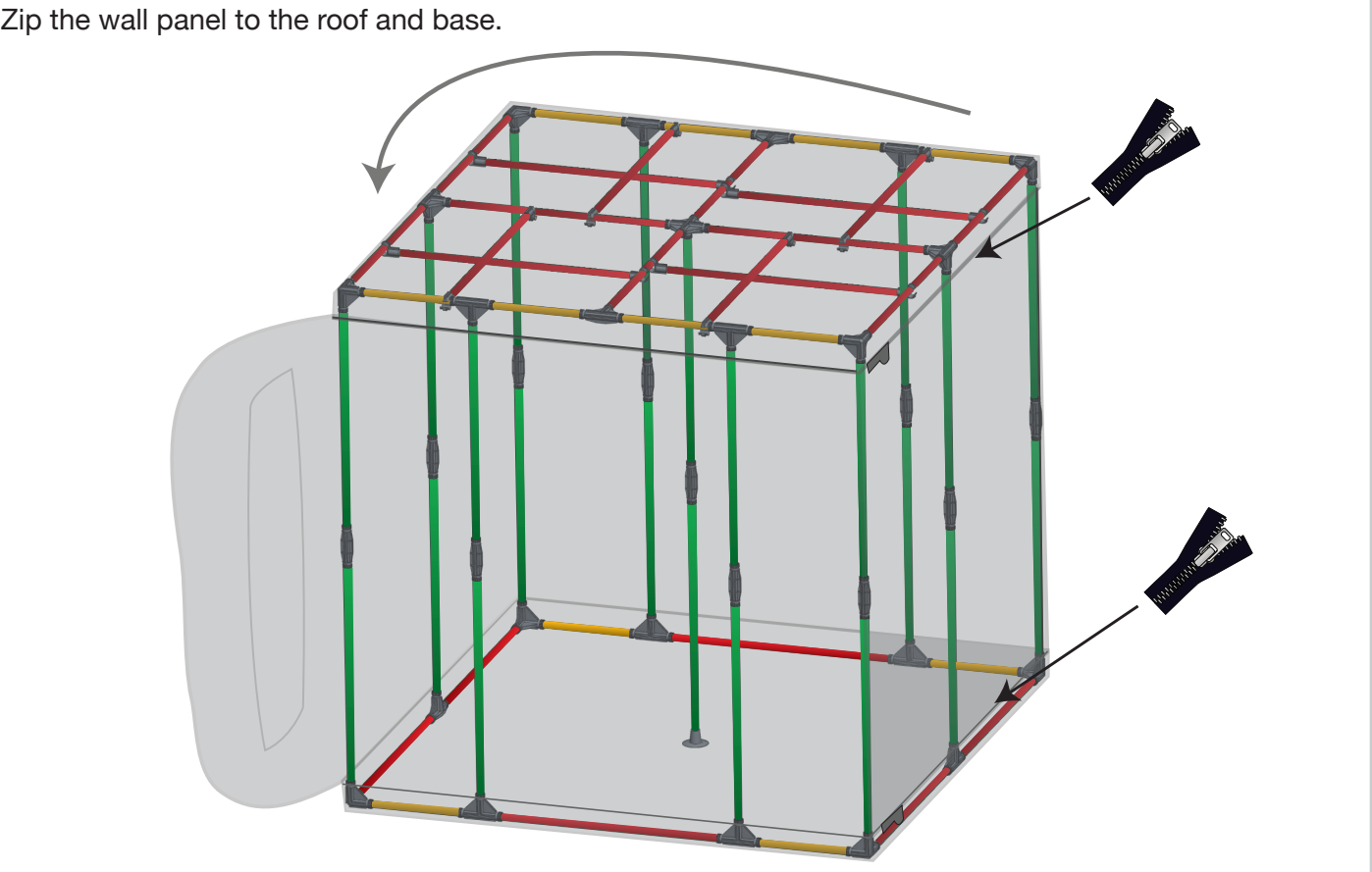
Two Person Assembly Recommended



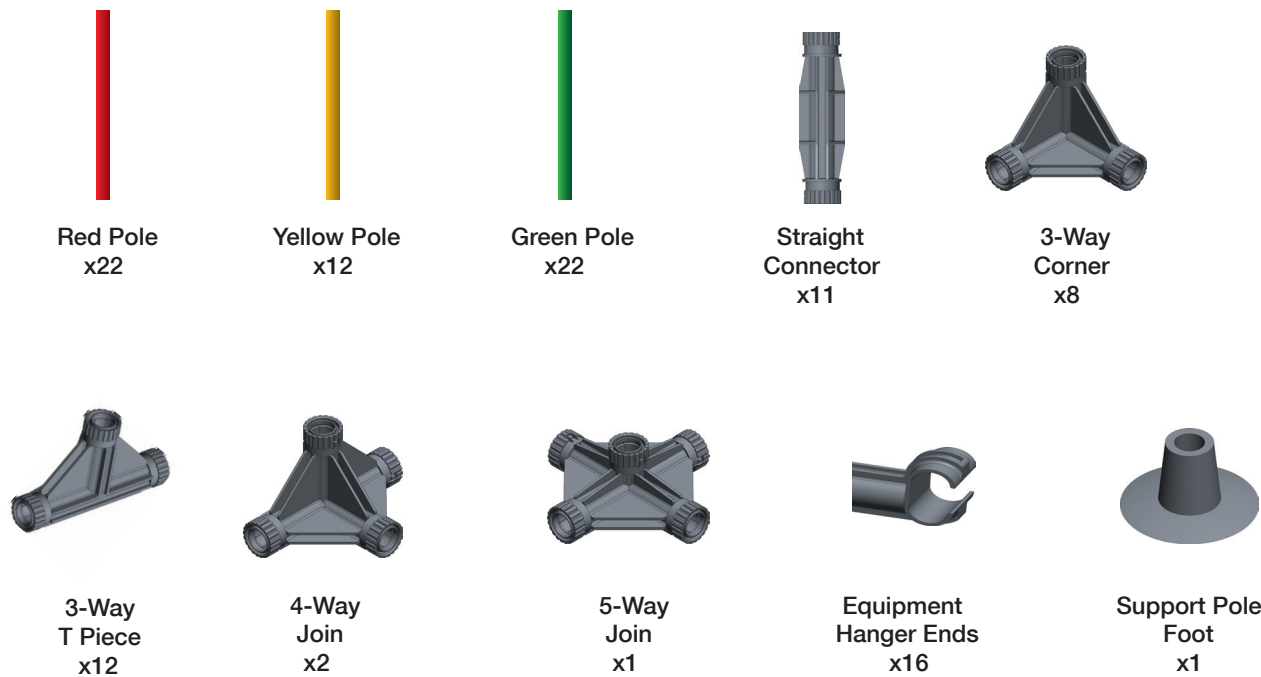
NOTE



Step 6

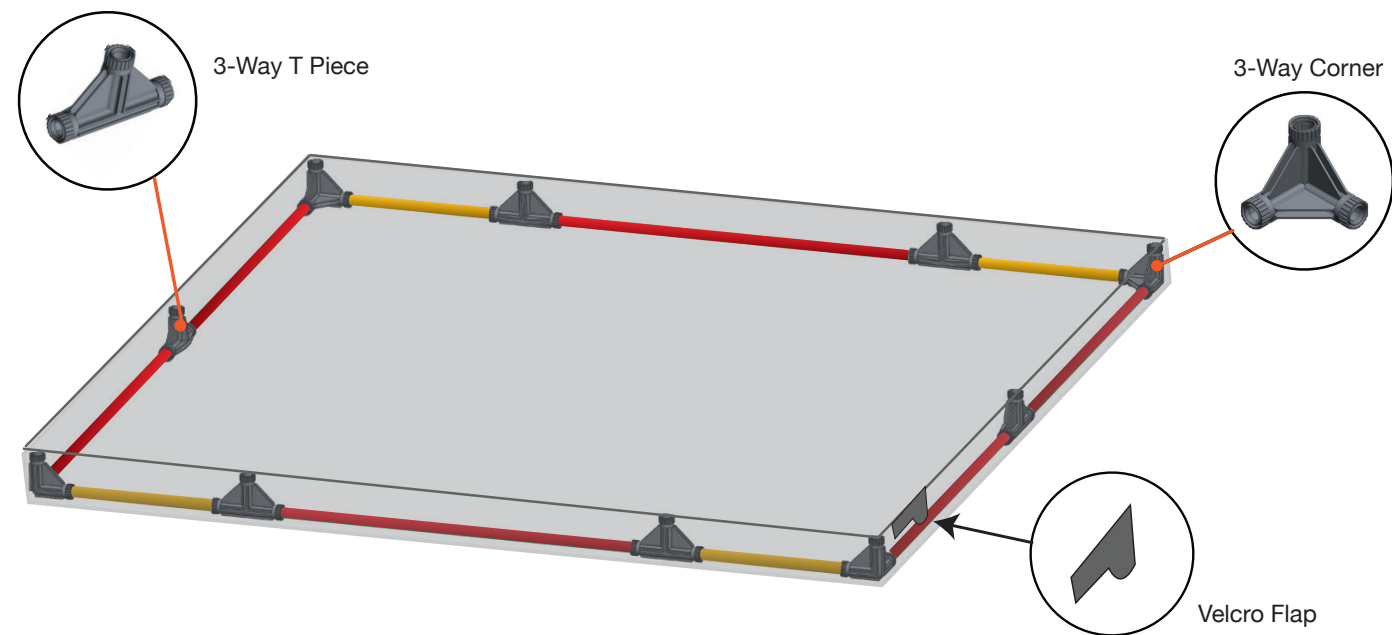


Parts List



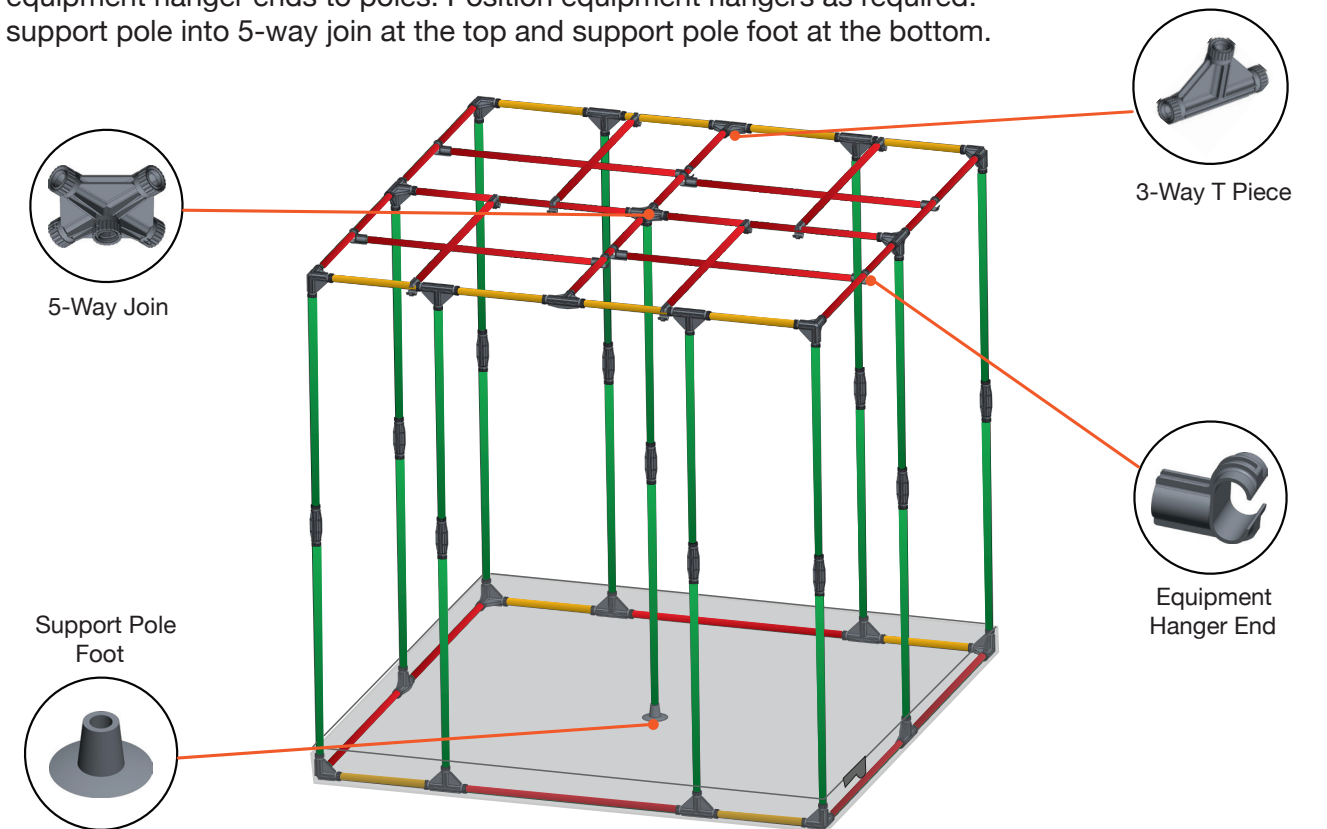
### Step 1

Lay out base ensuring Velcro flap is in front right corner.  
Assemble floor poles, 3-way corners and 3-way T pieces as shown.



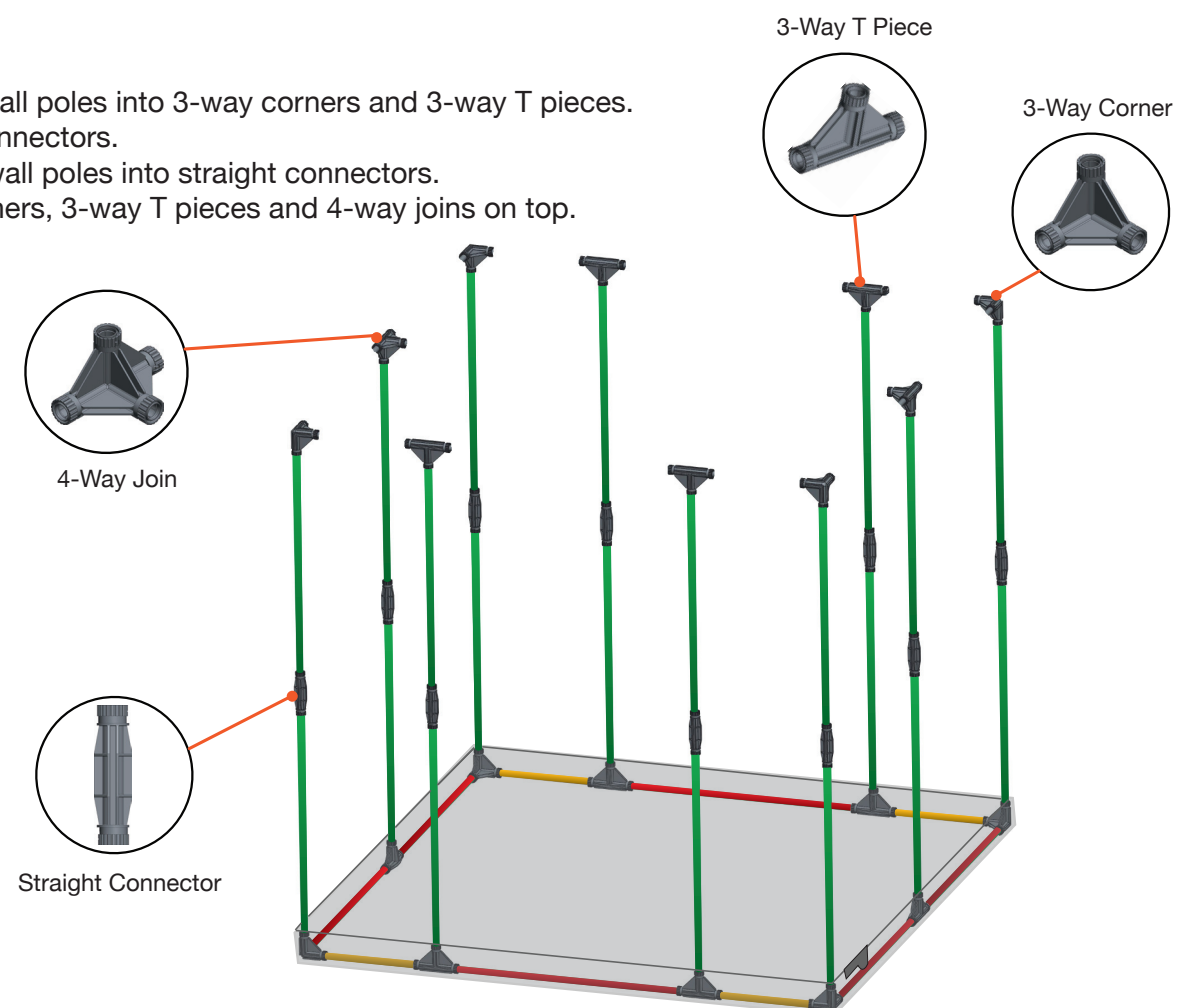
### Step 3

Insert ceiling poles into 3-way corners, 3-way T pieces, 4-way joins and 5-way join.  
Fit equipment hanger ends to poles. Position equipment hangers as required.  
Fit support pole into 5-way join at the top and support pole foot at the bottom.



### Step 2

Insert lower wall poles into 3-way corners and 3-way T pieces.  
Fit straight connectors.  
Insert upper wall poles into straight connectors.  
Fit 3-way corners, 3-way T pieces and 4-way joins on top.



### Step 4

Fit roof ensuring Velcro flap is in front right corner.

