



MATERIALS COMPATIBILITY GUIDE 2024 V.1.0

	Fabric																				Leather					
	Suunta	Steelcut Trio	Divina Melange	Remix	Naveli	Melange Nap	Main Line Flax	Messenger	L493 sanfor	Sport	SUNHILL	Jade	Revive	Medley	Manhattan	Era	Wool Roll	Pattern	Canvas	New Castle	Crystal	Milano	Bellagio 2	Omega	Saddle Leather	
Arc	●	●	●	●	●	●	●	●	●	●	●	▲3	✖	●	●	●	●	●	✖	●	●	●	●	●	✖	
Atelier	●	●	●	●	●	●	●	●	●	●	●	●	●	●	●	●	●	●	✖	✖	✖	✖	✖	✖	✖	
Aya	●	●	●	●	●	●	●	●	●	●	●	●	●	●	●	●	●	●	✖	●	●	●	●	●	✖	
Blend	●	●	●	●	●	●	●	●	●	●	●	●	●	●	●	●	●	●	●	●	●	●	●	●	✖	
Blink	●	●	●	●	●	●	●	●	●	●	●	▲2	●	●	●	●	●	●	✖	●	●	●	●	●	✖	
Brightliner★	●	●	●	●	●	●	●	●	●	●	●	▲3	✖	●	●	●	●	●	✖	●	●	●	●	●	✖	
Bund	●	●	✖	●	●	●	●	●	●	●	●	✖	●	●	●	●	●	●	✖	●	✖	●	●	●	✖	
Carlo	●	●	●	●	●	●	●	●	●	●	●	▲2	●	●	●	●	●	●	✖	●	●	●	●	●	✖	
Crawford	●	●	●	●	●	●	●	●	●	●	●	▲3	●	●	●	●	●	●	✖	●	●	●	●	●	✖	
Dawn	●	●	●	●	●	●	●	●	●	●	●	●	●	●	●	●	●	●	●	●	●	●	●	●	✖	
Discipline	●	●	●	●	●	●	●	●	●	●	●	▲2	●	●	●	●	●	●	●	●	●	●	●	●	✖	
Exchange	●	●	●	●	●	●	●	●	●	●	●	●	●	●	●	●	●	●	✖	●	●	●	●	●	✖	
Float	●	●	●	●	●	●	●	●	●	●	●	●	✖	●	●	●	●	●	●	●	●	●	●	●	✖	
Freja	✖	✖	✖	✖	✖	✖	✖	✖	✖	✖	✖	✖	✖	✖	✖	✖	✖	✖	✖	✖	✖	✖	✖	✖	●	
Industry	●	●	●	✖	●	●	●	●	●	●	●	●	✖	●	●	●	●	●	✖	●	●	●	●	●	✖	
Infinity	●	●	●	●	●	●	●	●	●	●	●	▲3	✖	●	✖	●	●	●	✖	●	●	●	●	●	✖	
James	●	●	●	●	●	●	●	●	●	●	●	●	●	●	●	●	●	●	✖	●	●	●	●	●	✖	
Journey	▲4	▲4	▲4	▲4	▲4	▲4	▲4	▲4	▲4	▲4	▲4	▲4	▲4	▲4	▲4	▲4	▲4	▲4	●	▲4	▲4	▲4	▲4	▲4	●	
Kite	●	●	●	●	●	●	●	●	●	●	●	▲3	✖	●	●	●	●	●	✖	●	●	●	●	●	✖	
Laval★	●	●	●	●	●	●	●	●	●	●	●	●	●	●	●	●	●	●	✖	●	●	●	●	●	✖	
Lunar	●	●	●	●	●	●	●	●	●	●	●	▲3	✖	●	✖	●	●	●	✖	●	✖	●	●	●	✖	
Mandarin	●	●	●	●	●	●	●	●	●	●	●	▲2	●	●	●	●	●	●	✖	●	●	●	●	●	✖	
Ming	✖	✖	✖	✖	✖	✖	✖	✖	✖	✖	✖	✖	✖	✖	✖	✖	✖	✖	✖	✖	✖	✖	✖	✖	✖	
Pagoda	●	●	●	●	●	●	●	●	●	●	●	●	●	●	●	●	●	●	●	●	●	●	●	●	✖	
QT	●	●	●	●	●	●	●	●	●	●	●	●	●	●	●	●	●	●	●	●	●	●	●	●	✖	
Chillax	●	●	●	●	●	●	●	●	●	●	●	✖	●	●	●	●	●	●	✖	●	●	●	●	●	✖	
Ren	●	●	●	●	●	●	●	●	●	●	●	●	●	●	●	●	●	●	●	●	●	●	●	●	✖	
Risom	●	●	●	●	●	●	●	●	●	●	●	●	●	●	●	●	●	●	●	●	●	●	●	●	✖	
Slow	●	●	●	●	●	●	●	●	●	●	●	▲2	●	●	●	●	●	●	✖	●	●	●	●	●	✖	
SW	●	●	●	●	●	●	●	●	●	●	●	●	●	●	●	●	●	●	●	●	●	●	●	●	✖	
Taylor	●	●	●	●	●	●	●	●	●	●	●	▲3	●	●	●	●	●	●	✖	●	●	●	●	●	✖	
Utility	●	●	●	●	●	●	●	●	●	●	●	▲2	●	●	●	●	●	●	✖	●	●	●	●	●	✖	
Valet★	▲5	▲5	▲5	▲5	▲5	▲5	▲5	▲5	▲5	▲5	▲5	✖	✖	▲5	▲5	▲5	▲5	▲5	✖	▲5	▲5	▲5	▲5	▲5	●	
William Gray★	●	●	●	●	●	●	●	●	●	●	●	▲3	✖	●	●	●	●	●	✖	●	●	●	●	●	✖	
Wohlert	●	●	●	●	●	●	●	●	●	●	●	●	●	●	●	●	●	●	●	●	●	●	●	●	▲1	

● Recommended materials to use for Stellar Works signature & collaboration collections.

✗ Materials which are not suitable for certain Stellar Works signature & collaboration collections.

* Collaboration collections

▲¹ Wohlert Collection: Can be used for Triangle Chair(1952) and Triangle Ottoman only.

▲² Due to the pile length of this fabric, there may be colour inconsistencies or deviation at seam lines.

▲³ Due to the low elasticity of this fabric, wrinkles appear at seam lines.

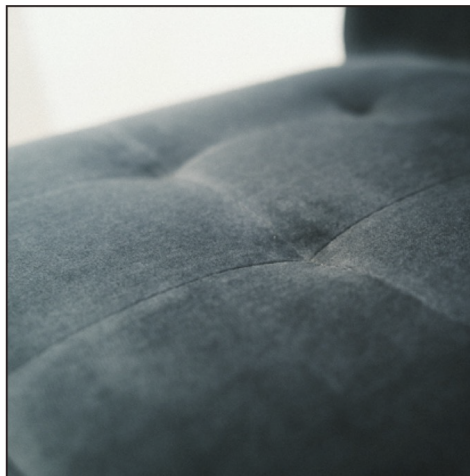
▲⁴ Only used for cushion.(Fabric for Canvas and leather for Saddle Leather)

▲⁵ Can be used for Valet Love Seat and Club Chair only.



MATERIALS COMPATIBILITY GUIDE 2024 V.1.0

▲2 Due to the pile length of this fabric, there may be colour inconsistencies or deviation at seam lines.



▲3 Due to the low elasticity of this fabric, wrinkles appear at seam lines.

