



motorola

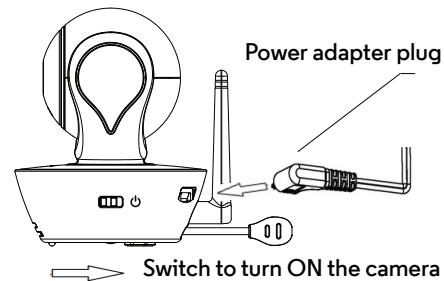
MODEL:
SCOUT85

QUICK START GUIDE

For a full explanation of all features and instructions, please refer to the User's Guide.

1. Setting up your Wi-Fi® Pet Video Camera

A. Connect to Power Supply.



1. Insert the Power Adapter plug into the micro USB socket at the back of the Camera Unit.
2. Connect the other end of the Power Adapter into a suitable mains power socket.
3. Switch the ON/OFF button to the ON position. The coloured LED will now start flashing slowly.

B. Install Hubble for Motorola Monitors Application.



Download the Hubble for Motorola Monitors App from the App Store for iOS devices or from the Google Play™ Store for Android™ devices.

WARNING:

STRANGULATION HAZARD – In case this unit is being used to monitor infants or children, keep the unit and adapter cord more than 1 metre from the cot and out their reach.

Never place camera or cords within a cot or near a bed. Secure the cord away from children's reach. Never use extension cords with AC Adapters. Only use the AC Adapters provided.

As with any electrical device, supervision of your pet's usage should be exercised until your pet is acclimated to the product. If your pet is prone to chewing, we strongly recommend you keep this and all other electrical devices out of its reach.

C. View on Compatible Smartphones, Tablets and Computers.



1. Run the Hubble App on your compatible smartphone, tablet, or computer.
2. Follow the in-app instructions to create your Hubble account and connect to your Wi-Fi® Camera.
3. Log in to your account on your compatible smartphone, tablet or via <https://app.hubbleconnected.com/#login> on your PC to access your live camera stream.

Please take note of the following minimum system requirements:

Smartphones/Tablets: iOS 7, Android™ 4.2

PC (only for viewing – NOT setup): Windows® 7, Mac OS® 10.7, Chrome™ 24, Internet Explorer® 9, Safari® 6, Firefox® 18, Adobe® Flash® 15, Java™ 7

Wi-Fi® requirements:

At least 0.6 Mbps upload bandwidth per camera. Test your Internet speed at: <http://www.speedtest.net/>

2. Customer Support

If you are experiencing any issues with your Motorola Wi-Fi® Pet Video Camera, you can contact our customer support team.

+49 (0) 1805 938 802 (Europe)
Email: motorola-mbp@tdm.de

or visit our help section on our website www.motorola.com



Manufactured, distributed or sold by Binatone Electronics International LTD., official licensee for this product. MOTOROLA and the Stylized M Logo, are trademarks or registered trademarks of Motorola Trademark Holdings, LLC. and are used under license. Mac, Mac OS, iPhone, iPad and Safari are the trademarks of Apple Inc., registered in the U.S. and other countries. Android, Google Play and Chrome are trademarks of Google Inc. Wi-Fi is trademark of the Wi-Fi Alliance. Window XP and Internet Explorer are trademarks of the Microsoft group of companies. Oracle and Java are registered trademarks of Oracle and/or its affiliates. All other trademarks are the property of their respective owners. © 2015 Motorola Mobility LLC. All rights reserved.



Printed in China
EN_EU Version 4.0