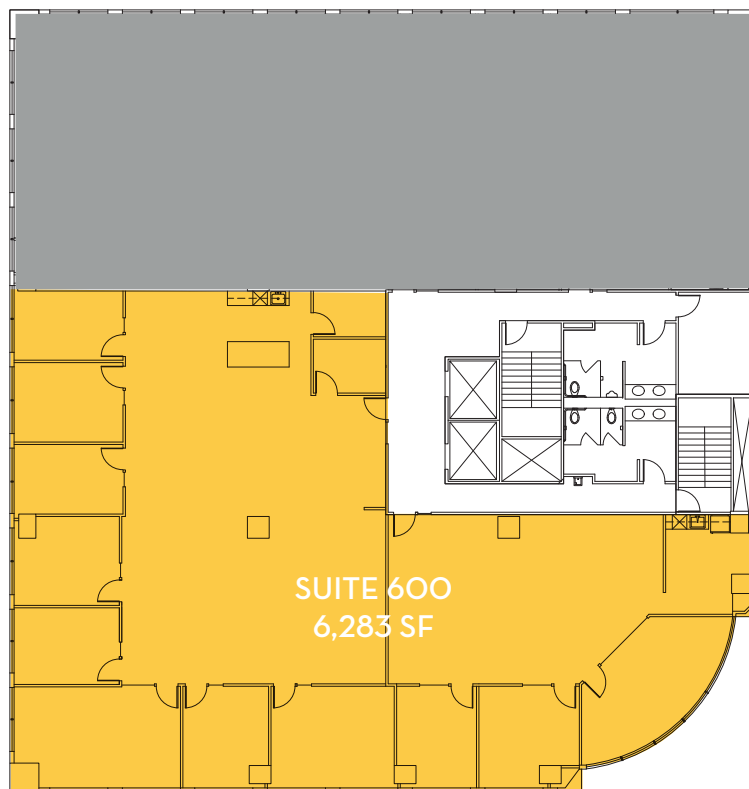


# 2505 SECOND

SEATTLE, WASHINGTON

## OFFICE SUITE 600 | 6,283 SF



### SCOTTA ASHCRAFT

Senior Vice President

[scotta.ashcraft@cbre.com](mailto:scotta.ashcraft@cbre.com)

206.292.6063

### LEAH MASSON

Senior Associate

[leah.masson@cbre.com](mailto:leah.masson@cbre.com)

206.292.6080

# CBRE

### MICHELLE CRABTREE

Regional Vice President

[mcrabtree@steelwave.com](mailto:mcrabtree@steelwave.com)

425.372.5485

© 2021 CBRE, Inc. All rights reserved. This information has been obtained from sources believed reliable, but has not been verified for accuracy or completeness. Any projections, opinions, or estimates are subject to uncertainty. The information may not represent the current or future performance of the property. You and your advisors should conduct a careful, independent investigation of the property and verify all information. Any reliance on this information is solely at your own risk. CBRE and the CBRE logo are service marks of CBRE, Inc. and/or its affiliated or related companies in the United States and other countries. All other marks displayed on this document are the property of their respective owners. Photos herein are the property of their respective owners and use of these images without the express written consent of the owner is prohibited. 8-2-2021JS