

# Between ocean and sky



SPACE + CRAFT

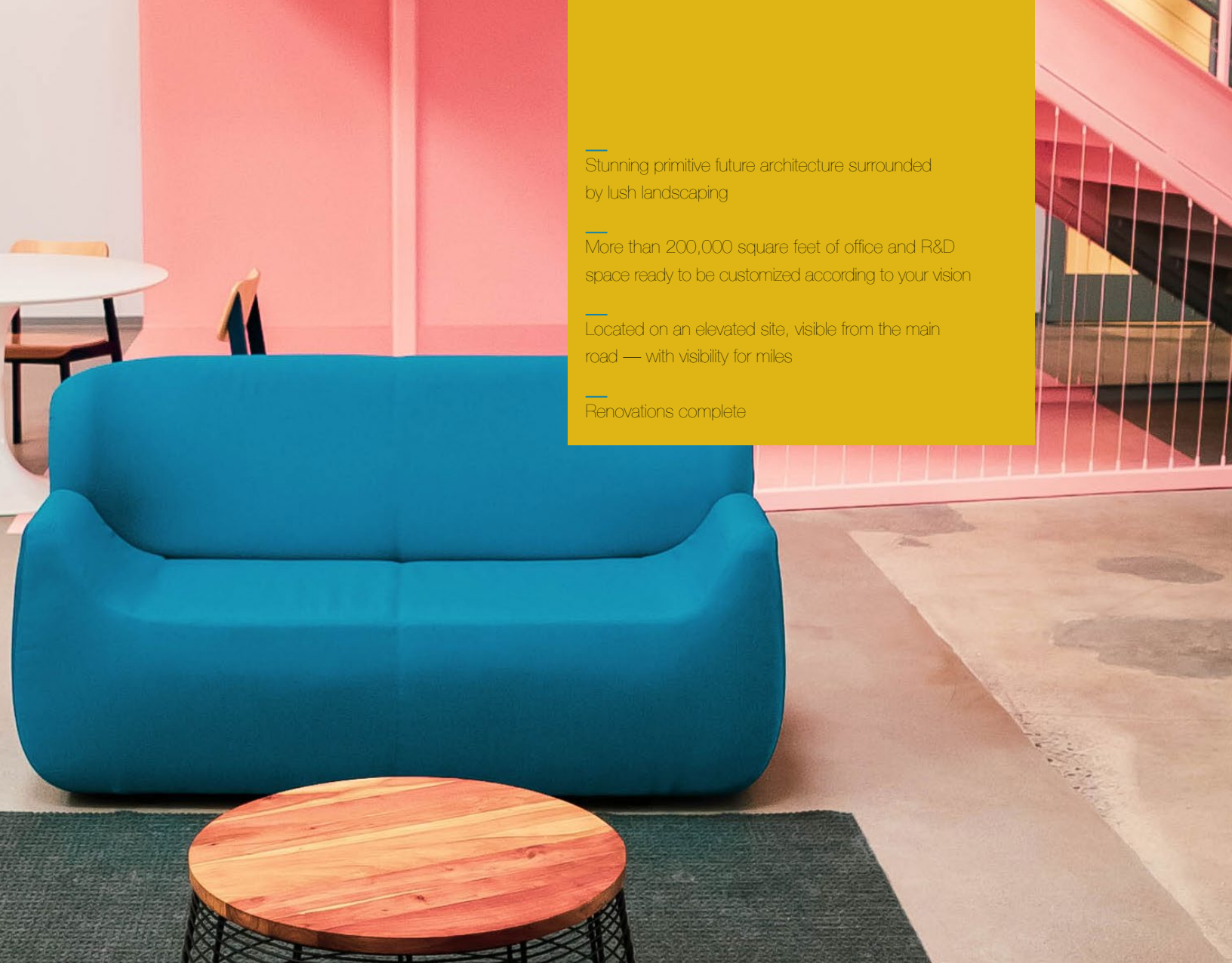
Design

01

# Presence without precedent

It sits low. Radically grounded,  
it beckons you to look up, as if  
pointing to the sky. It exists here  
and nowhere else.





—  
Stunning primitive future architecture surrounded  
by lush landscaping

—  
More than 200,000 square feet of office and R&D  
space ready to be customized according to your vision

—  
Located on an elevated site, visible from the main  
road — with visibility for miles

—  
Renovations complete





# A past focused forward

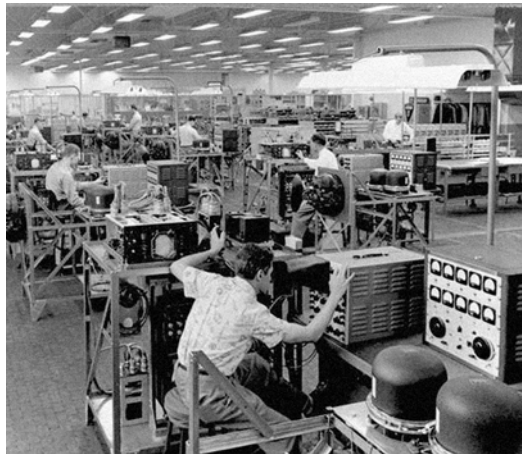
Space Craft was no accident.  
It was built for people.  
It was built with purpose:  
To foster innovation, further  
exploration and push the best  
beyond their limits.





## TO HELP THE BRIGHTEST SHINE

When Space Craft originally opened in the 1970s, those walking through its doors worked for the research and development division of the Hughes Aircraft Corporation, one of the most storied American companies in the fields of aviation and space exploration. It was designed with those men and women in mind — not only to attract them, but to inspire them to deliver their best. Today, it stands as a monument to the innovation and creation that's gone on within its walls.



# We work where we are

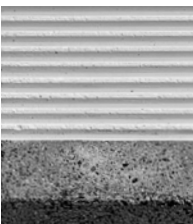
It's about substance without pretense.  
Not a sense of place, but an actual place.  
A character you may not instantly  
recognize, but one that stays with you.

## A BUILDING IS MORE THAN WALLS

We work in offices, hallways and meeting rooms, but also beyond  
traditional workspaces: in courtyards, cafes and gyms. Space  
Craft is for those who know a building is more than walls and what  
happens between them is more than a job.







Fully renovated gym with fitness classes and onsite trainer

Full service cafe with indoor and outdoor seating

Many large common spaces throughout the site

Multiple outdoor workspaces and seating areas with distinctive, mediterranean-inspired landscaping

Neighborhood

04

# A shout among whispers

This is the very definition of hiding in plain sight. It appears both out of place and completely in tune with its surroundings.







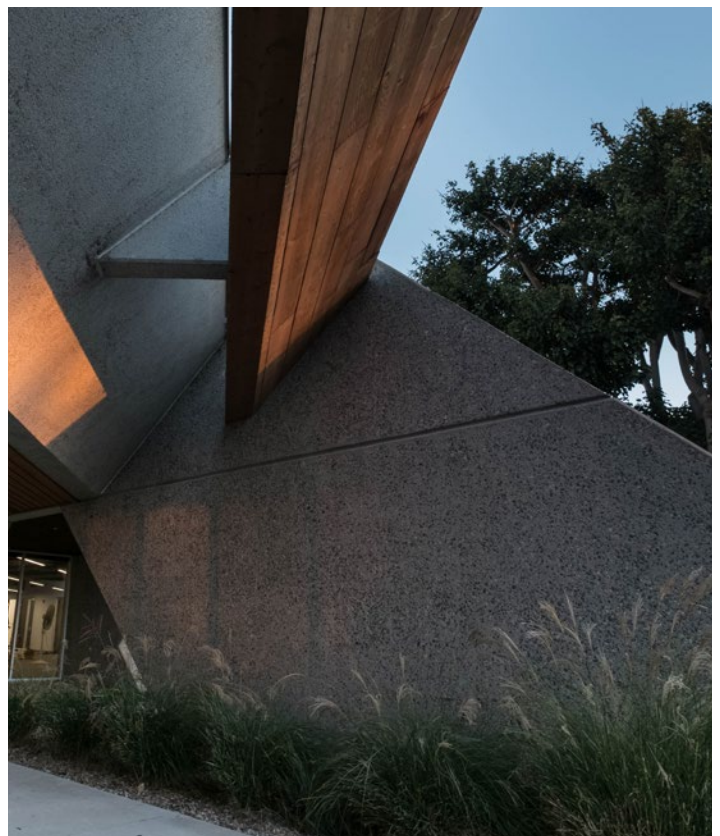
A national hub for high-tech, action sports, clean tech, med-device, and golf businesses

Directly accessible from Palomar Airport Road, the region's main thoroughfare

Minutes from Interstate 5 and the Coast Highway

Across the street from McClellan – Palomar Airport

Near high end restaurants, quick stop eateries, retail and some of Carlsbad's finest hotels and resorts



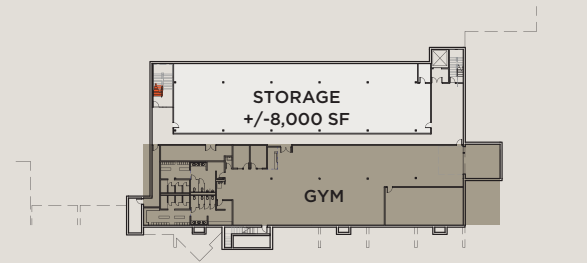
# Plans

05

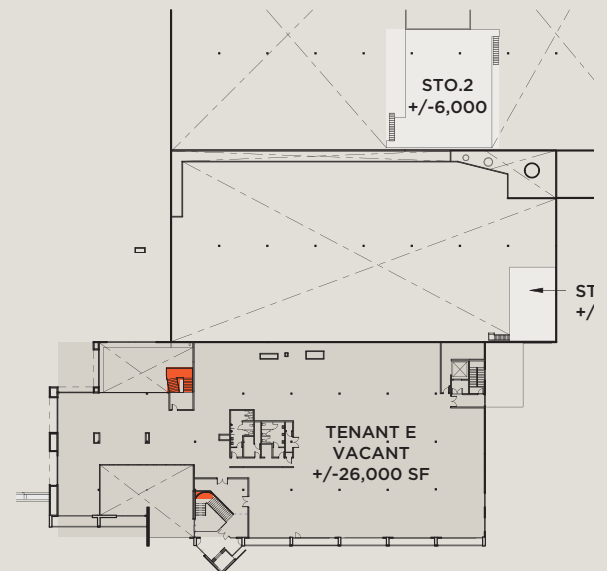
## Floor Plans



LEVEL 1



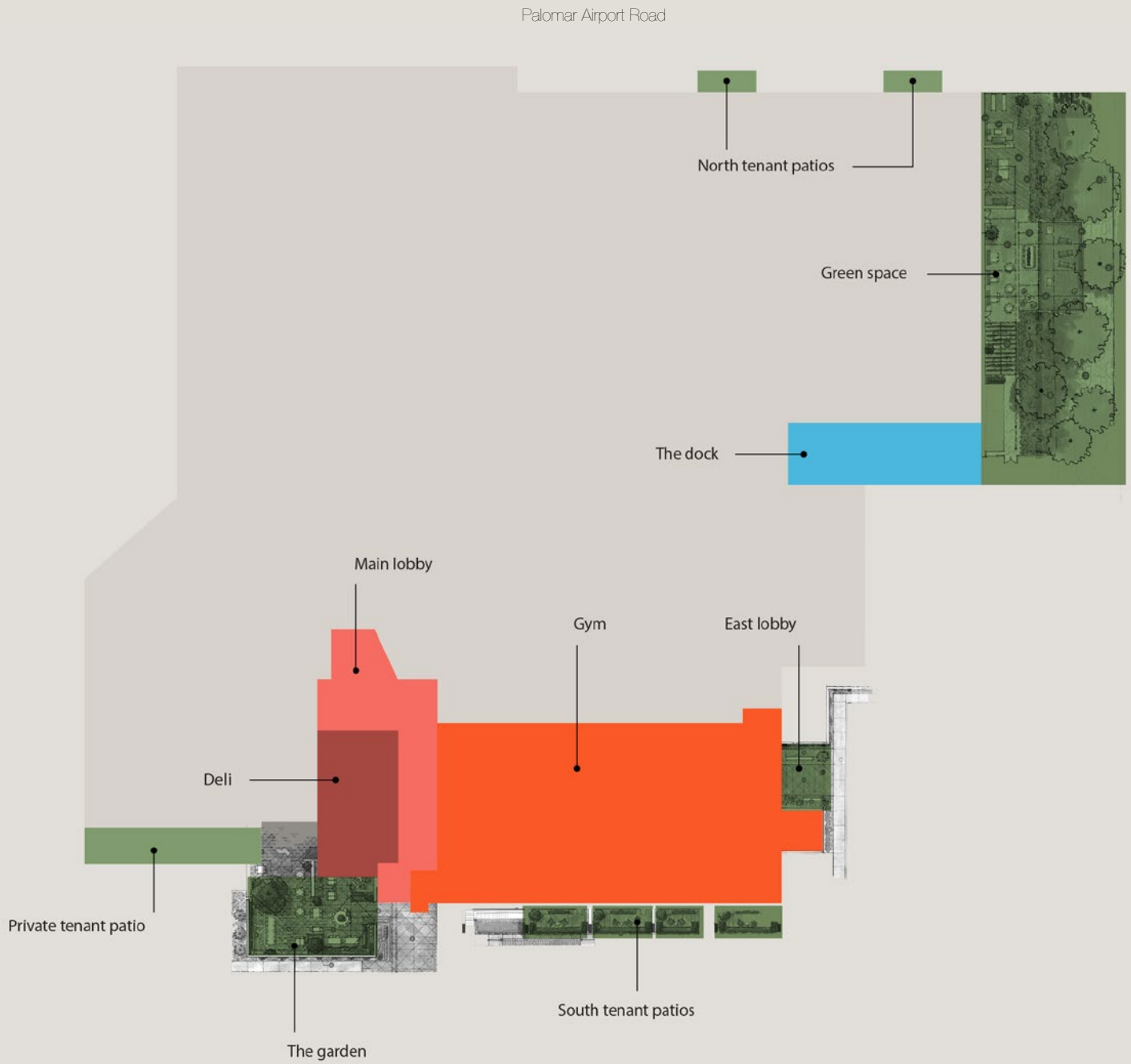
LEVEL 0



LEVEL 2



# Site Plan



# The Details

06

---

More than 200,000 square feet of office and R&D space ready to be customized according to your vision

---

In keeping with Californian influences, indoor-outdoor connections are amplified with a variety of outdoor living spaces, from casual dining, to ceremonial entry, to intimate workspaces and patios

---

13.07 acre elevated site, minutes from Interstate 5, PCH and McClellan-Palomar airport







---

Large, open common spaces

---

Construction commenced Q1 2020

---

Newly remodeled double-height lobby with skylights positioned to create a dynamic play of light throughout the day, and built-in lounge seating

---

Outdoor dining area enclosed with new sculptural site walls, built-in benches, and a folded metal shade structure

---

Fully-renovated gym with lockers, showers and fitness classes

---

3/1,000 parking

---

Project is close to many high-end restaurants, quick stop eateries, retail and some of Carlsbad's finest hotels and resorts









## SPACE + CRAFT

**Jonathan Hastanan**  
949.556.9657  
[jhastanan@steelwaveinc.com](mailto:jhastanan@steelwaveinc.com)



**Aric Starck**  
760.431.4211  
[aric.starck@cushwake.com](mailto:aric.starck@cushwake.com)

