



AXIS TOWER



If you have the vision to see that *where* you do business is as important as *how* you do business, then you'll be in enviable company at Axis Tower.



Axis Tower.  
Redeveloped.  
Redesigned.  
Rebuilt for  
Business.





## Where a timeless point of view is all you need to see.

Inspired by the most celebrated mid-century architects, interior designers and visual producers of our time, we have reimagined Axis Tower @ DTC. What some would have seen as only an old building that is past its prime, we saw an opportunity. Axis Tower, with over \$8,000,000 in infrastructure, technology, and design improvements, will stand among the most desirable locations in the Denver Tech Center. See it and you'll know exactly what we're talking about.



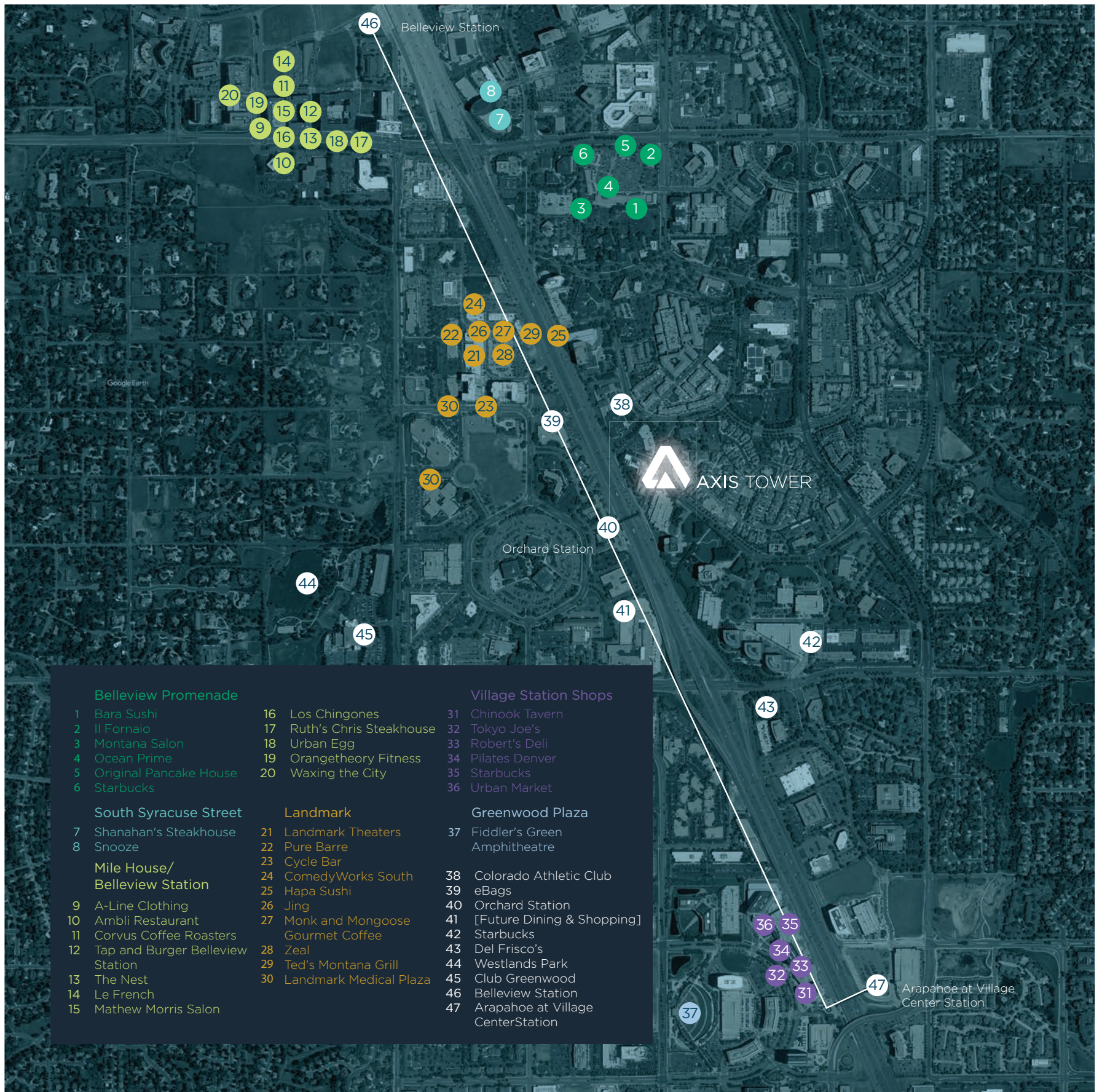


When we say  
it's all here, we  
actually mean it.

From the winding drive towards the dramatic entry façade, Axis Tower is has everything you need. We have substantially remodeled its lobby, fitness center, and technologically cutting edge shared conference spaces. The fully appointed locker rooms, garden level Café and lounges are also all new. There is not a detail, and we mean not a single detail, left out. With its 360° views, direct access to light rail, and outstanding location, there is actually nothing like Axis Tower @ DTC.



360° *views*



### Bellevue Promenade

- 1 Bara Sushi
- 2 Il Fornaio
- 3 Montana Salon
- 4 Ocean Prime
- 5 Original Pancake House
- 6 Starbucks

### South Syracuse Street

- 7 Shanahan's Steakhouse
- 8 Snooze

### Mile House/ Belleview Station

- 9 A-Line Clothing
- 10 Ambli Restaurant
- 11 Corvus Coffee Roasters
- 12 Tap and Burger Belleview Station
- 13 The Nest
- 14 Le French
- 15 Mathew Morris Salon

- 16 Los Chingones
- 17 Ruth's Chris Steakhouse
- 18 Urban Egg
- 19 Orangetheory Fitness
- 20 Waxing the City

### Landmark

- 21 Landmark Theaters
- 22 Pure Barre
- 23 Cycle Bar
- 24 ComedyWorks South
- 25 Hapa Sushi
- 26 Jing
- 27 Monk and Mongoose Gourmet Coffee
- 28 Zeal
- 29 Ted's Montana Grill
- 30 Landmark Medical Plaza

### Village Station Shops

- 31 Chinook Tavern
- 32 Tokyo Joe's
- 33 Robert's Deli
- 34 Pilates Denver
- 35 Starbucks
- 36 Urban Market

### Greenwood Plaza

- 37 Fiddler's Green Amphitheatre
- 38 Colorado Athletic Club
- 39 eBags
- 40 Orchard Station
- 41 [Future Dining & Shopping]
- 42 Starbucks
- 43 Del Frisco's
- 44 Westlands Park
- 45 Club Greenwood
- 46 Belleview Station
- 47 Arapahoe at Village Center Station



# When someone asks you to pinpoint the moment your company elevated its brand, you can say that this would be that.

Most outstanding about Axis Tower would be its premiere location. Situated atop one of the highest geographical locations in the Denver Tech Center affords our tenants sweeping 180 degree views of the front range. From Longs Peak to the south, along the western front range to downtown Denver and then east to Cherry Creek Dam - unobstructed. What's more, we are directly across from the Orchard Light Rail Station allowing you to pull the most outstanding selection of potential employees from every direction. Directly across from the building resides the most prestigious neighborhoods in metro Denver, as well as miles

and miles of running, biking and walking trails. And if that's not enough, some of the area's most outstanding collection of coffee, dining, athletic clubs, shopping centers, theaters, golf courses and gathering places in the city are but a few minutes drive away. This is what being in the right place at the right time actually looks like.

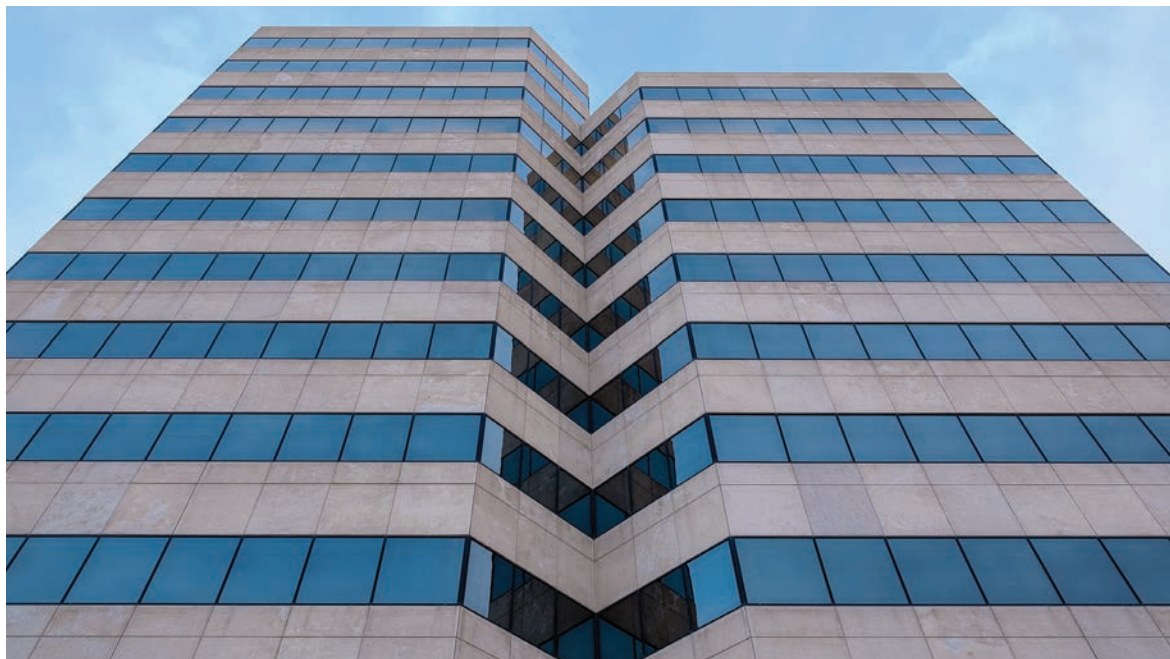


# We know a thing or two because we've succeeded at a thing or two.

## Buchanan Street Partners. Why success breeds success.

Buchanan Street Partners is a real estate investment management firm based in Newport Beach, California that focuses on value-investing in both commercial and multifamily direct ownership and debt investments. Our highly skilled team understands how to invest through multiple real estate cycles, enabling them to identify opportunities and maximize value while prioritizing principal preservation. Axis Tower epitomizes our company foundation. Axis Tower will not only stand the test of time, but be

operated seamlessly for each and every tenant we serve. That's our formula of success for our tenants. And we can prove it time and time again.







We're open for  
your business.

With an eye on one-of-a-kind opportunities,  
we invite you to call CBRE today.

It's one of the smartest things you can do for  
the future of your company.

**CBRE**

**JOHN MAROLD**  
+1 720 528 63 55  
[john.marold@cbre.com](mailto:john.marold@cbre.com)

**LINDSAY GILBERT**  
+1 720 528 6360  
[lindsay.gilbert@cbre.com](mailto:lindsay.gilbert@cbre.com)

**MITCH BRADLEY**  
+1 720 528 6311  
[mitch.bradley@cbre.com](mailto:mitch.bradley@cbre.com)



---

AXIS TOWER