



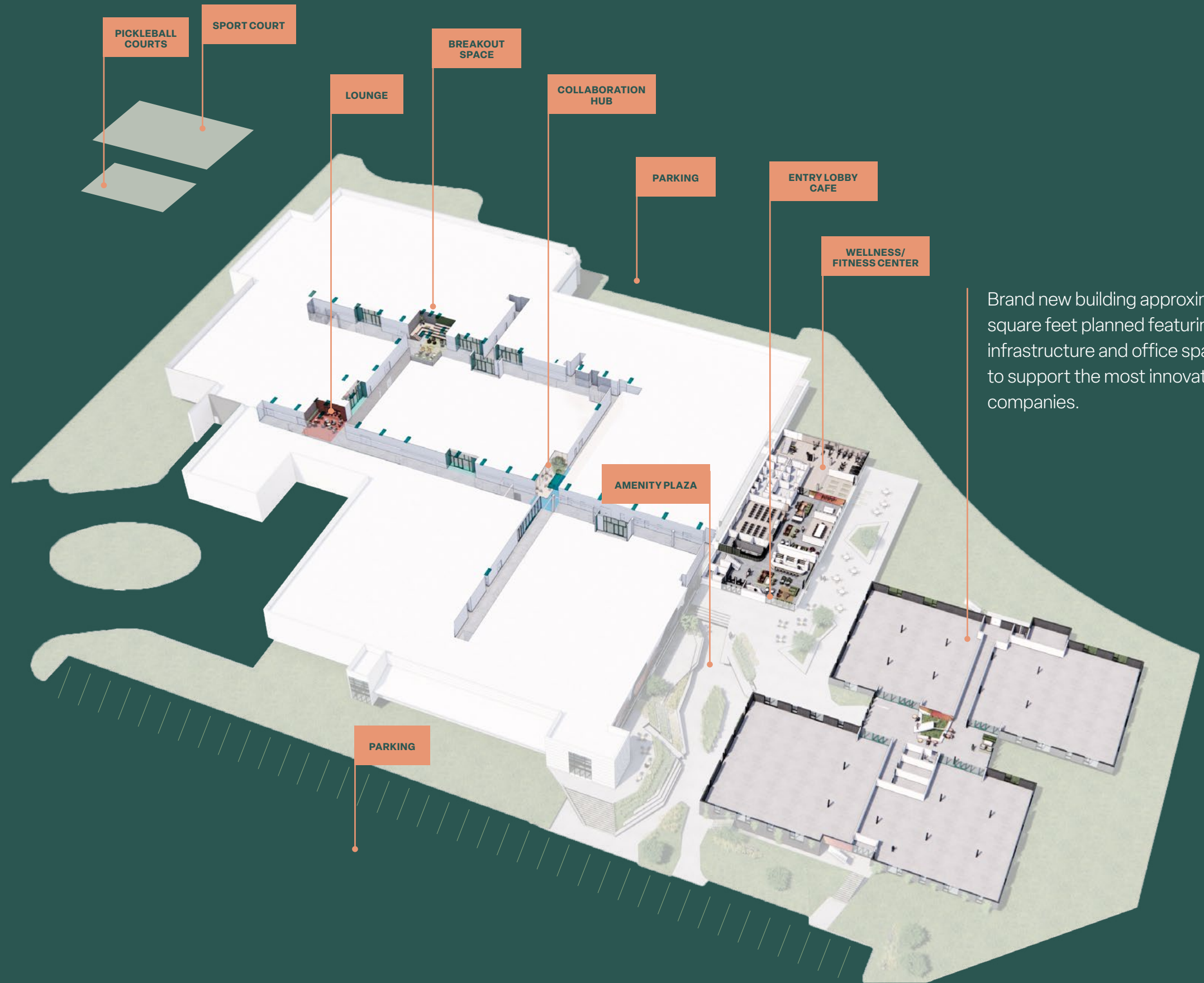
**INFINITE
LABS**

A campus outfitted for Colorado's most complex Life Science Innovators.



An elevated life-science campus.

1450 Infinite Drive
Louisville, CO 80027



Brand new building approximately 70,000 square feet planned featuring brand new lab infrastructure and office space designed to support the most innovative life science companies.

The existing building is 167,000 sf.

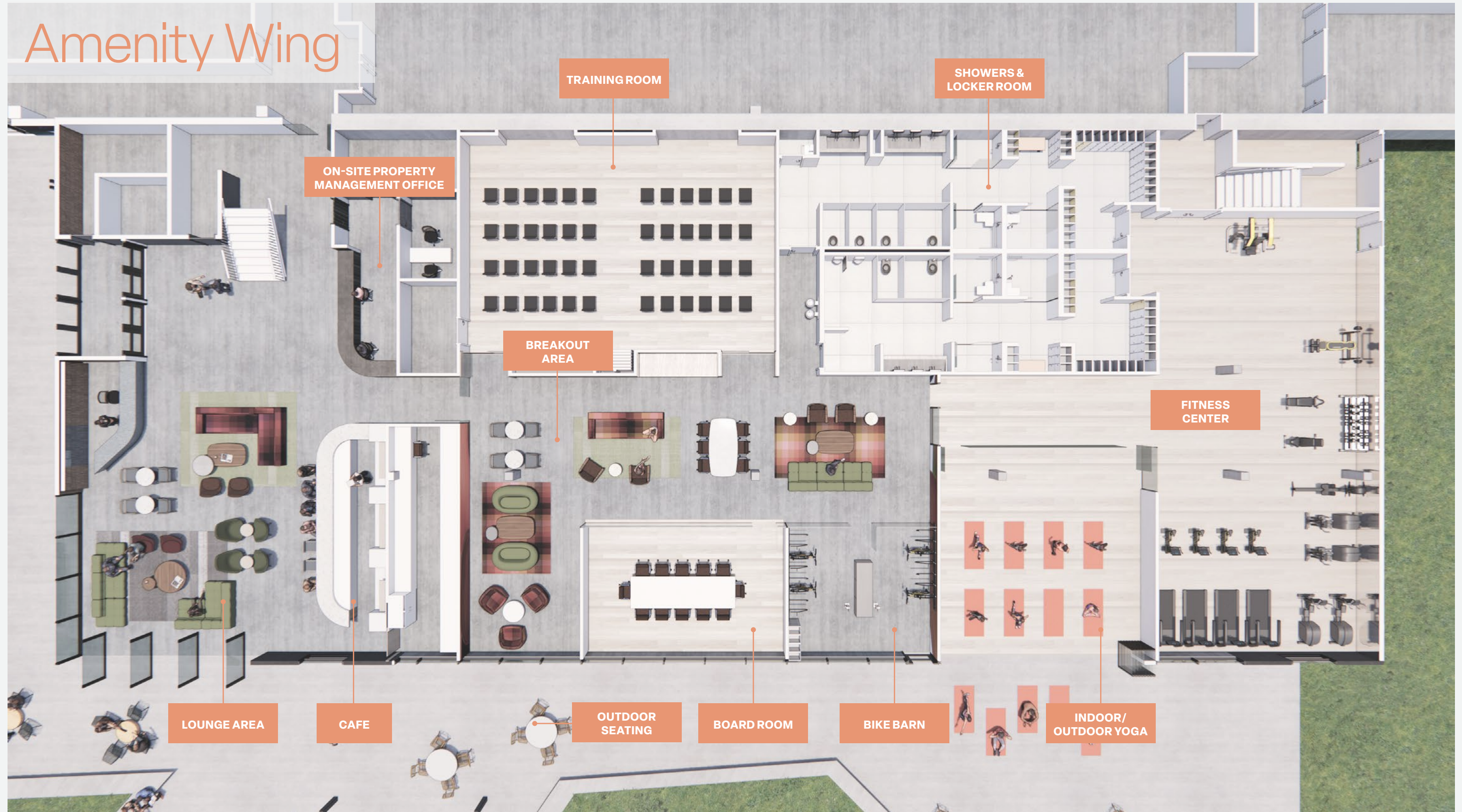
Ample Parking

Sport Courts: A pickleball court and multi-function court for tennis, and basketball.

Louisville Trails Access

In-Place Lab Infrastructure

Amenity Wing



Additional Outdoor Gathering Area Planned

20,000 SF AMENITY PLAZA

InfiniteLabs will feature additional outdoor gathering area, which features a communal plaza, covered seating and updated landscaping for its tenants to enjoy the beautiful Boulder weather!



Fitness Center



PELOTON & TRAINER

First-class on-site fitness center including Peloton bikes and locker room with showers and on-site personal trainer.

Outdoor Yoga



The yoga and meditation studio is equipped with an operable glass front, enabling classes to migrate outdoors and features weekly yoga classes.

Lounge Area



A LOUNGE WITH A BREEZE

This cozy and functional lounge brings in the Colorado sun and breeze with articulating doors.

The Vibe | Coffee & Wine Bar



STAFFED COFFEE & WINE BAR
Whether you're enjoying a coffee while working at the cafe bar or relaxing with a glass of wine, this entry cafe seamlessly transitions into the communal amenity plaza, providing a modern, casual space ideal for both work and leisure.

Bike Barn



FOR THE BOULDER CYCLIST

Bike barn with fixit wall mount, vending machine, compressed air machine, and lockers.

Outdoor Seating and Meeting Area



BBQ & GATHERING AREA

Shaded event space with string lighting outfitted with BBQ equipment for specialty tenant events.

Conference Rooms

On-site conference room and 75-person training room equipped with state-of-the-art technology and multiple high-definition televisions.



A WELCOME EXPERIENCE

Each tenant suite offers a special corridor entry that welcomes your employees and visitors into the space.

Tenant Suites

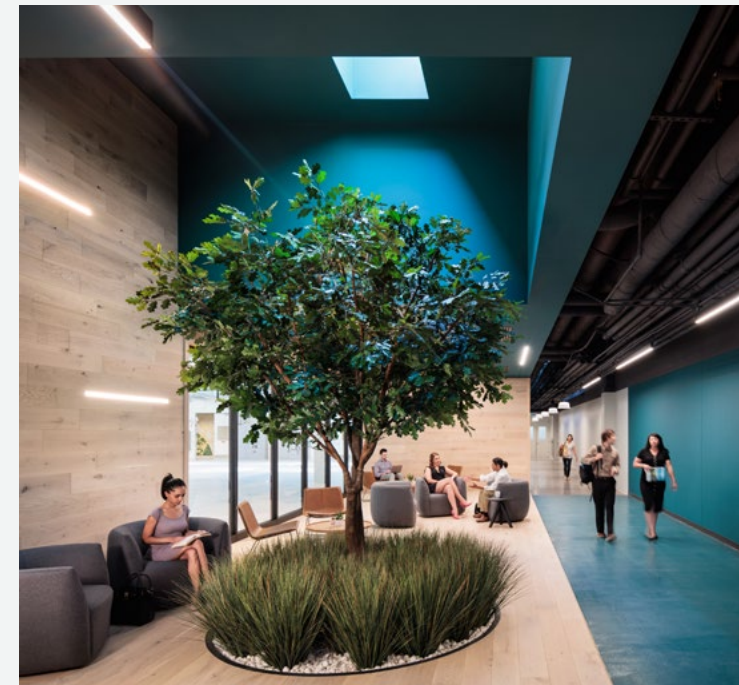


CREATIVE THINKING

Comfortable and welcoming lounges provide spaces for retreat and creative thinking.

Collaboration Lounges

Breakout Spaces



CONNECTION

Energized breakout spaces designed to offer a variety of workspaces for science and tech professionals.

SKYLIGHTS

Open ceilings with skylights for ample natural light.



Boulder Corridor: The Premier Life Science Hub

Located in Louisville, CO, just 10 minutes from downtown Boulder and 25 minutes from the heart of downtown Denver. Louisville is one of the most established and sought-after life science hubs within Boulder County, serving top talent from both the Denver and Boulder area.

Ranked #10

Denver/Boulder ranked No. 10 on a list of top life science markets in the U.S., according to a mid-year report from real estate firm Newmark.

72%

72% of Boulder County residents have a bachelor's degree or higher. Hire from one of the most highly educated talent pools in the nation.

50%

50% of area employment is provided by advanced technology companies. Access top tech talent who will appreciate InfiniteLabs amenities.



InfiniteLabs provides a cutting-edge Infrastructure for life science and tech users of varying sizes.

Spec suites available now.



16,000+ amp of power

Cleanroom space rated as Class 100, ISO 9001 & 14001

HVAC Mechanical 24/7

Extensive Emergency Back-up power

Redundant Electrical, Heating, & Cooling Service

Chemical Control Infrastructure in Place

Acid Neutralization Equipment

Heavy Metal Removal System

De-Ionized Water System

Refrigeration Equipment

Nearby Amenities

FOOD & DRINK

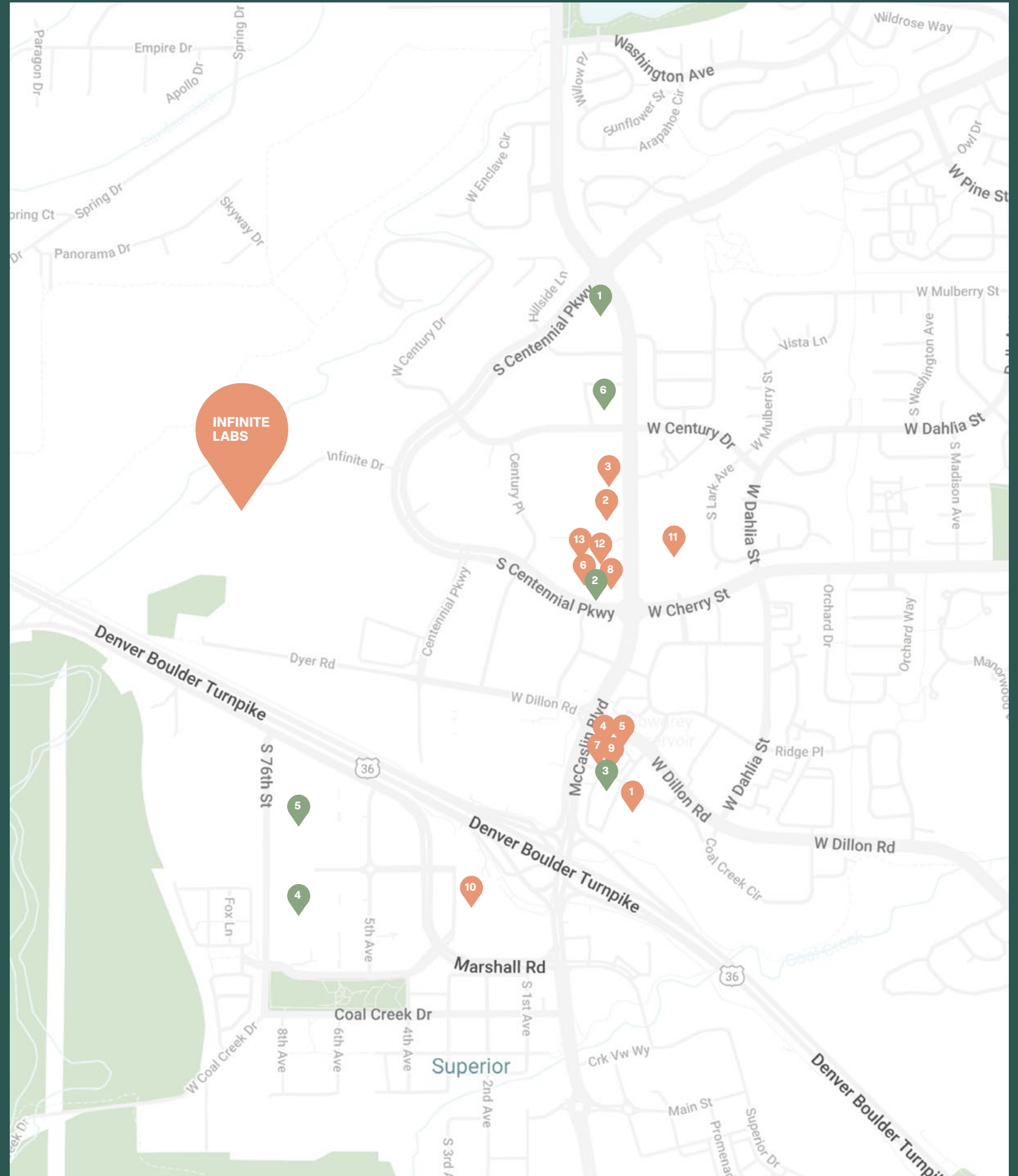
- 1 Courtyard Marriott
- 2 Chipotle 🚶
- 3 Jersey Mike's Sub 🚶
- 4 Jimmy John's
- 5 MAD Greens
- 6 Marco's Pizza 🚶
- 7 MOD Pizza
- 8 QDOBA 🚶
- 9 Smashburger
- 10 Whole Foods Market
- 11 Centennial Wine & Spirits
- 12 Organic Sandwich Company 🚶
- 13 Starbucks 🚶

OTHER

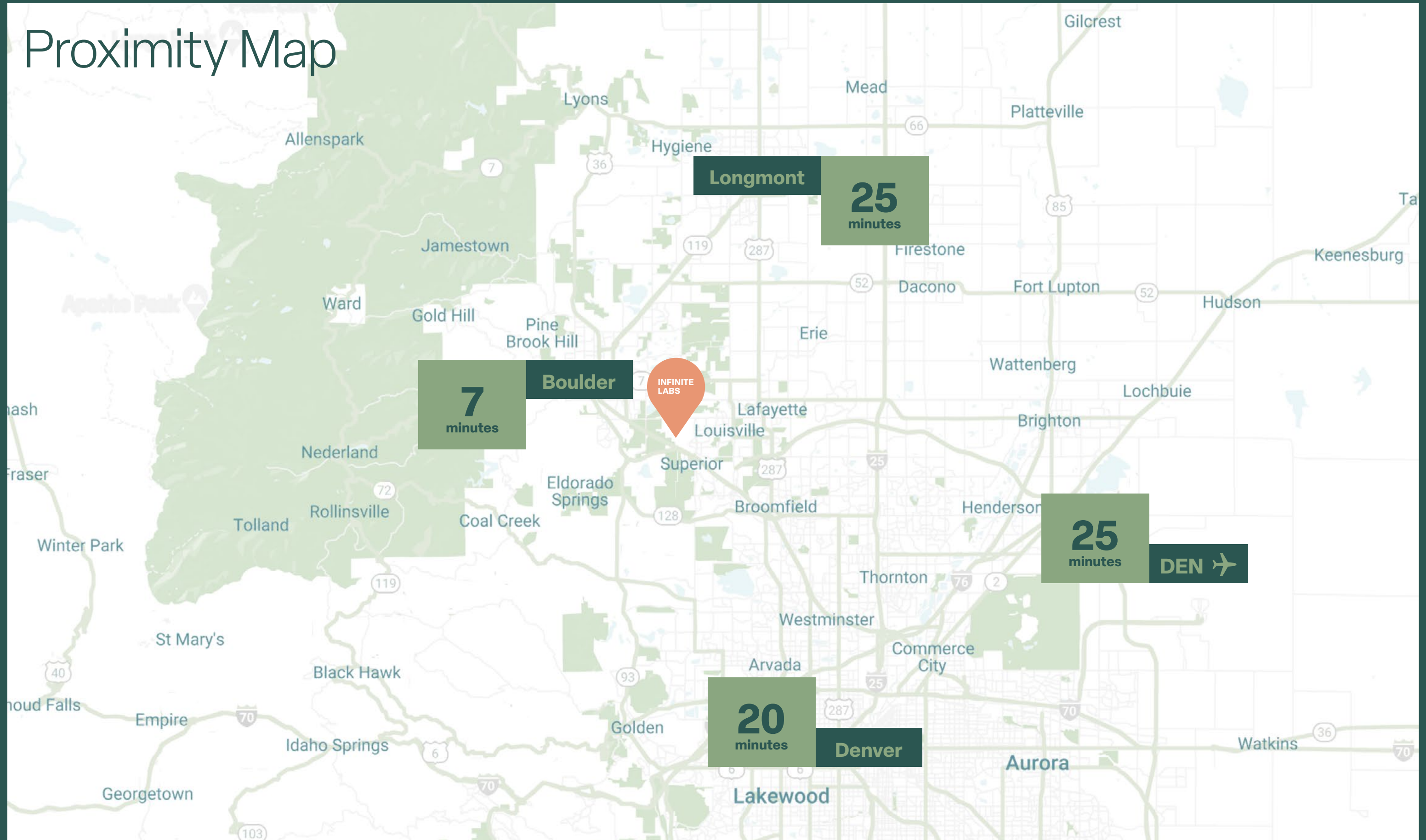
- 1 KinderCare
- 2 Cyclebar 🚶
- 3 FedEx Office
- 4 Target
- 5 Costco
- 6 Walgreens 🚶

5 MINUTES NORTHEAST

- Mudrock's Tap & Tavern
- The Wellness Way
- My Salon Suite
- Wells Fargo Bank
- Planet Fitness
- Subway
- NoCoast CrossFit



Proximity Map



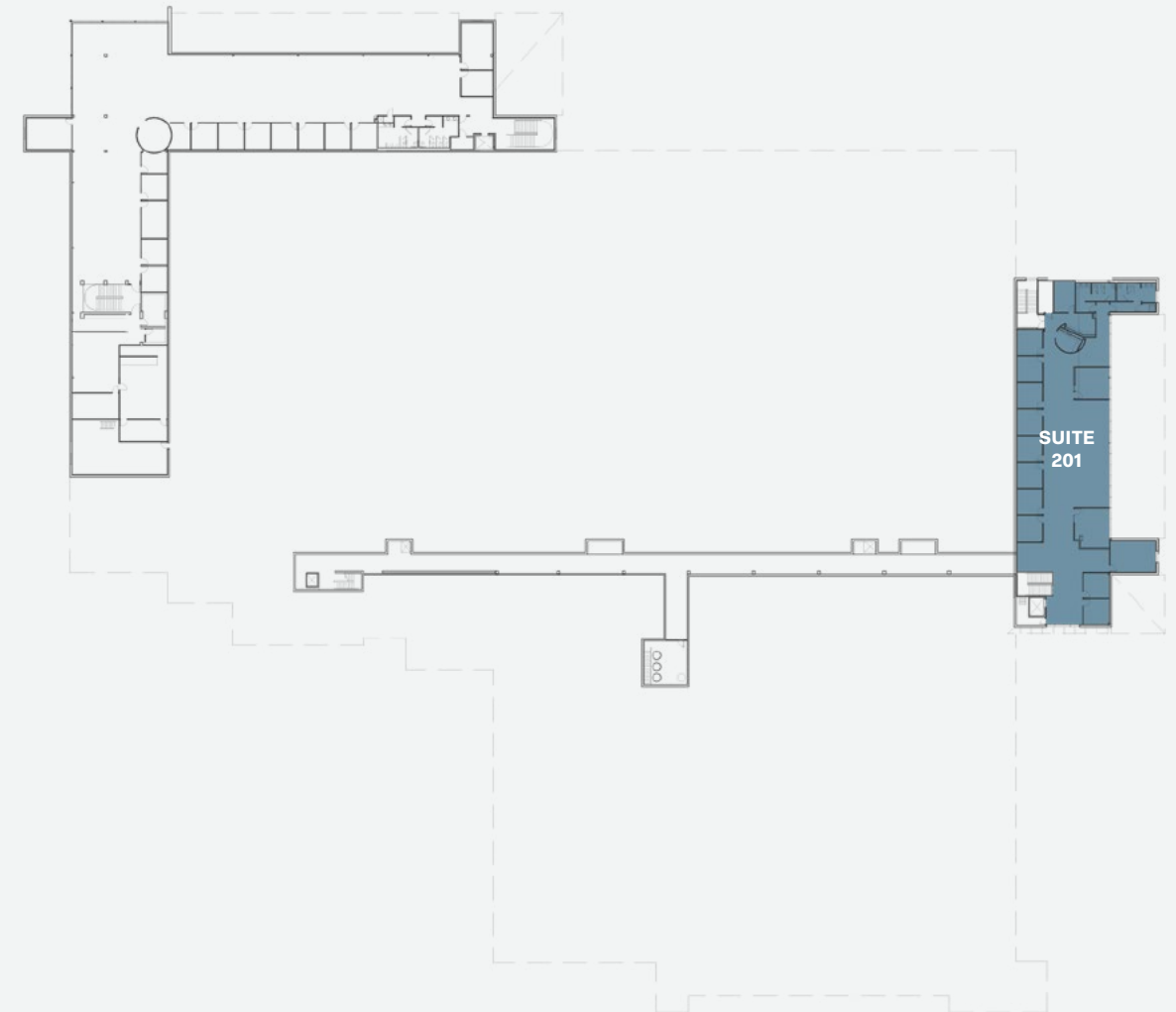
Existing Building

A proven life science building equipped with lab, R&D space, clean rooms and office space infused with modern amenities: breakout spaces, collaboration hubs, cafe, and wellness and fitness center.

Suite 102	12,299 SF	New Spec Suite
Suite 108	21,039 SF	Lab/Shell Ready
Suite 122	3,683 SF	New Spec Suite
Suite 201	8,527 SF	New Spec Suite



LEVEL 1

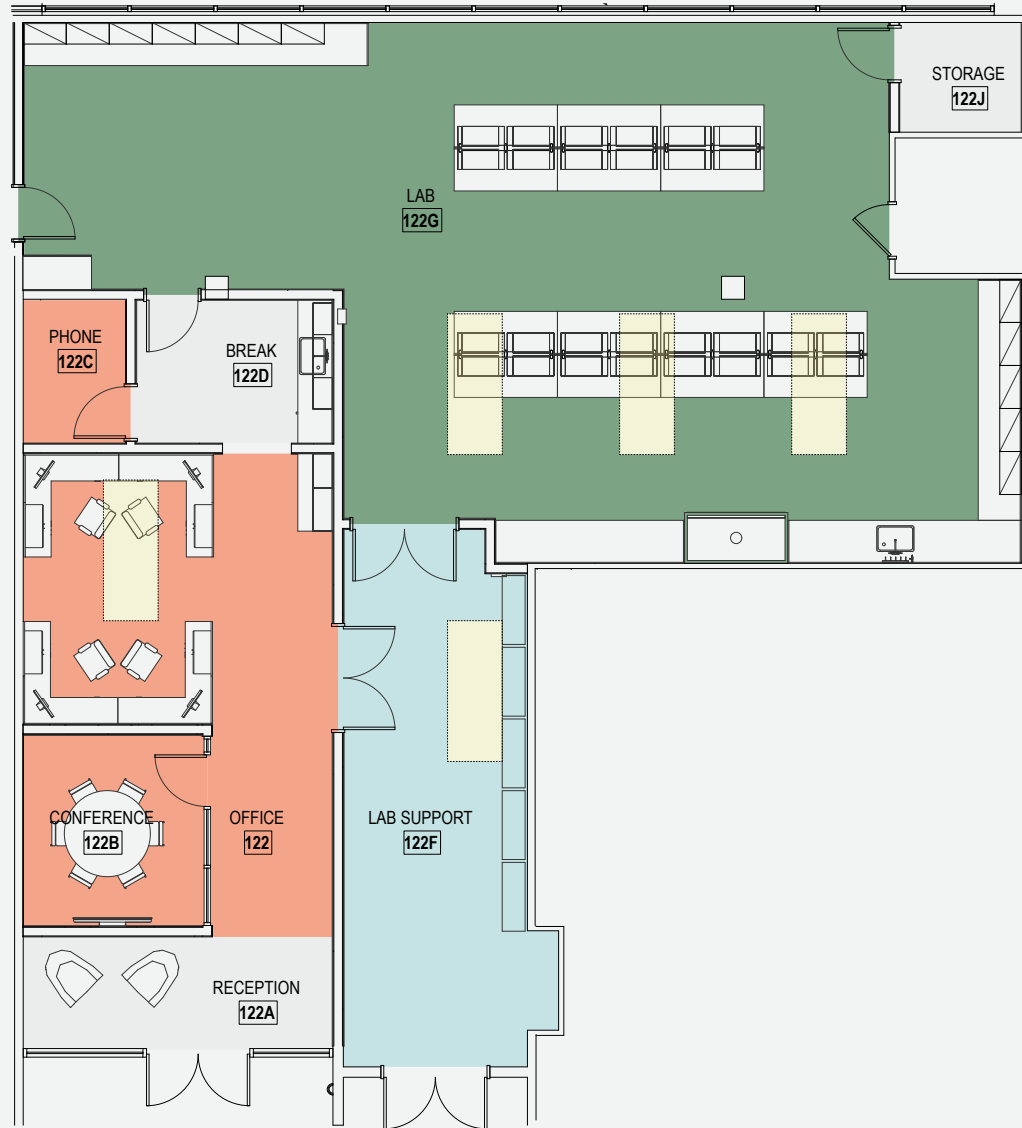


LEVEL 2

Suite 122

3,683 SF

Available Now

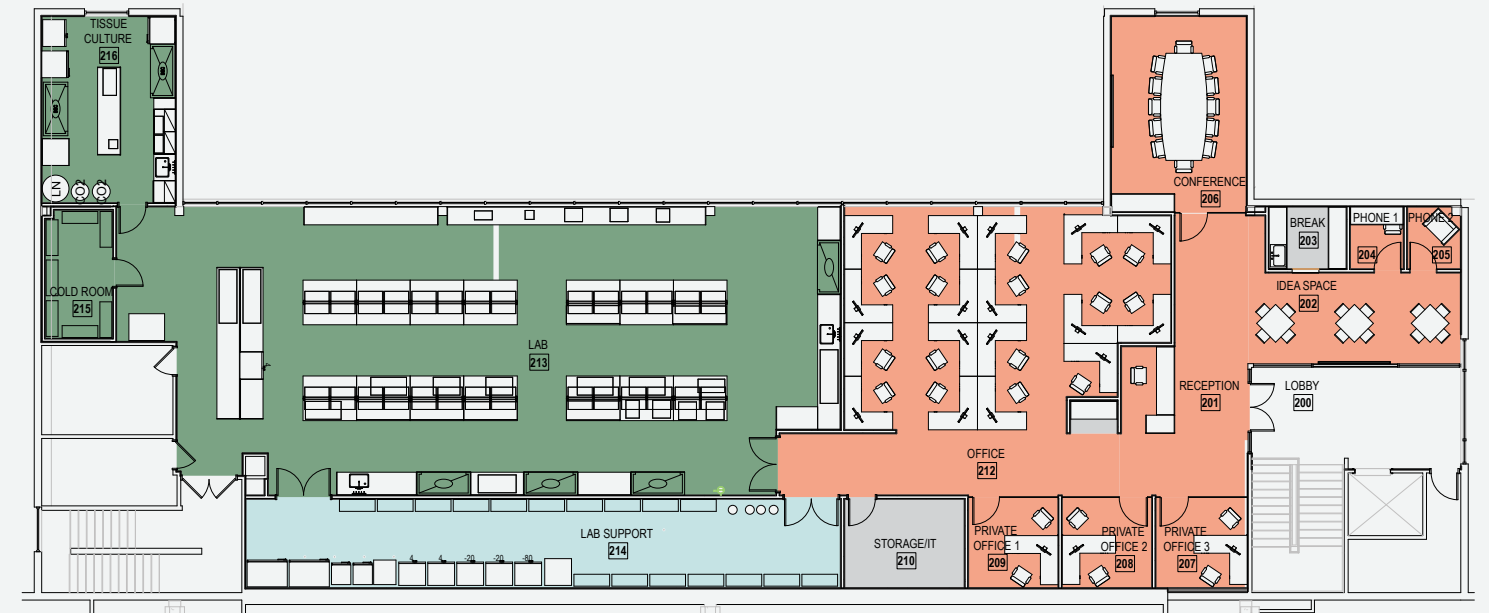


- Lab
- Office
- Lab Support

Suite 201

8,527 SF

Available Now



- Lab
- Office
- Lab Support



1450 Infinite Drive
Louisville, CO 80027

ERIK ABRAHAMSON

Senior Vice President
Erik.Abrahamson@cbre.com
720.315.4517

BLAKE HARRIS

Senior Vice President
Blake.Harris@cbre.com
303.917.7405

CHRIS PHENICIE

Senior Vice President
Chris.Phenicie@cbre.com
303.638.1619

