



FOR LEASE

Queen Anne Square

200-220 WEST MERCER STREET, SEATTLE



Available Suites 618 SF up to 18,234 SF

AMENITIES INCLUDE showers, bike storage, and conference room

PARKING RATIO: 1.95/1,000 RSF

ELECTRONIC CAR parking access with charging station

WITHIN WALKING DISTANCE of many convenient amenities nearby

CLOSE TO Rapid Ride, Space Needle, Seattle Center, and Key Arena

NEARBY DINING AND SHOPPING includes cafes, fine dining, retail, and grocery stores

LESS THAN a 15-minute walk to South Lake Union and 1.5 miles from the Downtown Central Business District

JUST MINUTES to drive to downtown Seattle, Interstate 5, and Highway 99

SCENIC VIEWS of Elliott Bay, the Olympic Mountains, and a large landscaped plaza

JEFF HUNTINGTON
206.296.9619
jeff.huntington@kidder.com

TODD BATTISON
206.296.9621
todd.battison@kidder.com

MICHELLE CRABTREE, CPM, RPA
206.270.6503
mcrabtree@steelwavellc.com

KIDDER.COM

This information supplied herein is from sources we deem reliable. It is provided without any representation, warranty, or guarantee, expressed or implied as to its accuracy. Prospective Buyer or Tenant should conduct an independent investigation and verification of all matters deemed to be material, including, but not limited to, statements of income and expenses. Consult your attorney, accountant, or other professional advisor.

**Kidder
Mathews**

FOR LEASE

Queen Anne Square

200-220 WEST MERCER STREET, SEATTLE



JEFF HUNTINGTON
206.296.9619
jeff.huntington@kidder.com

TODD BATTISON
206.296.9621
todd.battison@kidder.com

MICHELLE CRABTREE, CPM, RPA
206.270.6503
mcrabtree@steelwavellc.com

KIDDER.COM



This information supplied herein is from sources we deem reliable. It is provided without any representation, warranty, or guarantee, expressed or implied as to its accuracy. Prospective Buyer or Tenant should conduct an independent investigation and verification of all matters deemed to be material, including, but not limited to, statements of income and expenses. Consult your attorney, accountant, or other professional advisor.

AVAILABLE SPACE

EAST BUILDING

Suite	SF	Available
East Suite 101 [†]	5,325	Now
East Suite 102	1,477	Now
East Suite 107	929	08/01/21
East Suite 209	2,440	Now
East Suite 305	1,381	Now
East Suite 307	618	Now
East Suite 401*	12,660	Now
East Suite 411*	3,216	Pending
East Suite 412*	2,358	Now

*CAN BE COMBINED FOR 18,234 SF

[†]CAN BE DEMISED TO 1,519 SF

WEST BUILDING

Suite	SF	Available
West Suite 225	2,466*	Now
West Suite 250	3,002*	Now
West Suite 300	9,045	Now
West Suite 400	2,745	Now

*CAN BE COMBINED FOR 5,468 SF

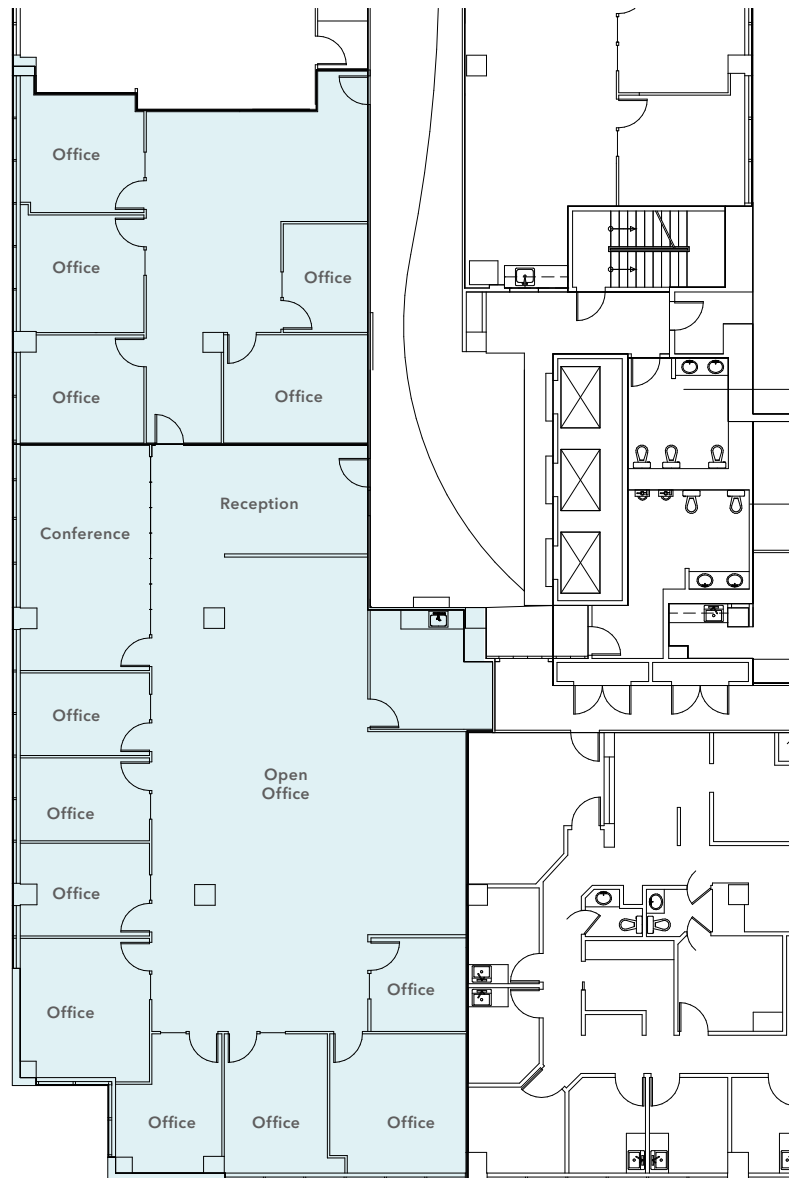
FOR PRICING, contact brokers.

FOR LEASE

Queen Anne Square

200-220 WEST MERCER STREET, SEATTLE

EAST SUITE 101: 5,325 SF



JEFF HUNTINGTON
206.296.9619
jeff.huntington@kidder.com

TODD BATTISON
206.296.9621
todd.battison@kidder.com

MICHELLE CRABTREE, CPM, RPA
206.270.6503
mcrabtree@steelwavelc.com

KIDDER.COM

This information supplied herein is from sources we deem reliable. It is provided without any representation, warranty, or guarantee, expressed or implied as to its accuracy. Prospective Buyer or Tenant should conduct an independent investigation and verification of all matters deemed to be material, including, but not limited to, statements of income and expenses. Consult your attorney, accountant, or other professional advisor.

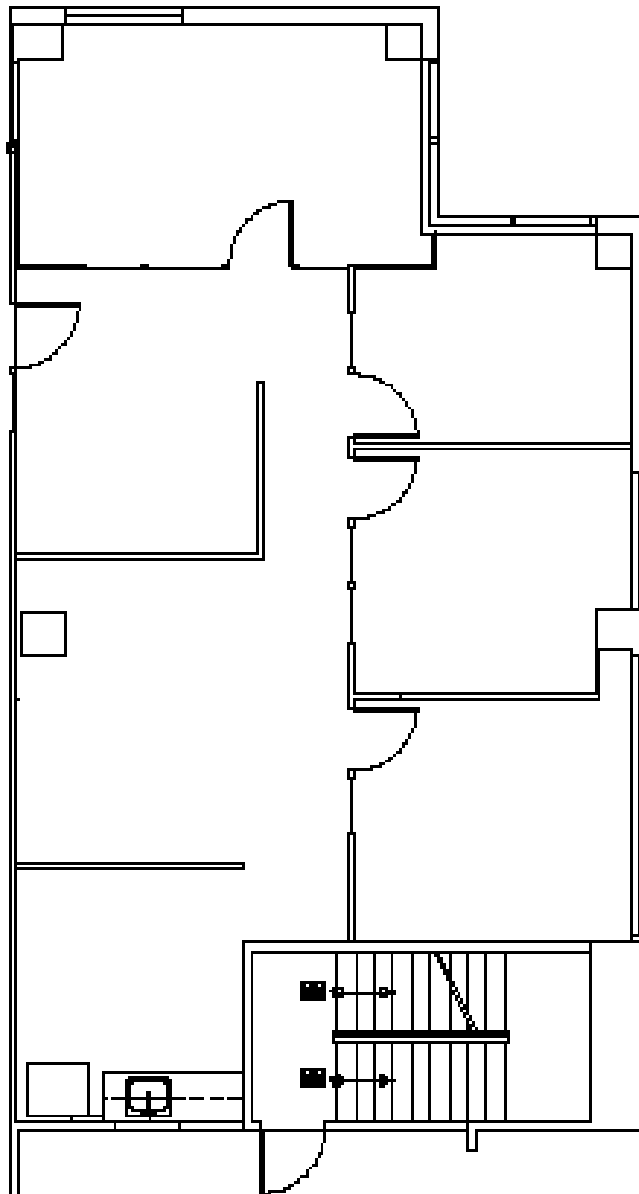


FOR LEASE

Queen Anne Square

200-220 WEST MERCER STREET, SEATTLE

EAST SUITE 102: 1,477 SF



JEFF HUNTINGTON
206.296.9619
jeff.huntington@kidder.com

TODD BATTISON
206.296.9621
todd.battison@kidder.com

MICHELLE CRABTREE, CPM, RPA
206.270.6503
mcrabtree@steelwavelc.com

KIDDER.COM

This information supplied herein is from sources we deem reliable. It is provided without any representation, warranty, or guarantee, expressed or implied as to its accuracy. Prospective Buyer or Tenant should conduct an independent investigation and verification of all matters deemed to be material, including, but not limited to, statements of income and expenses. Consult your attorney, accountant, or other professional advisor.

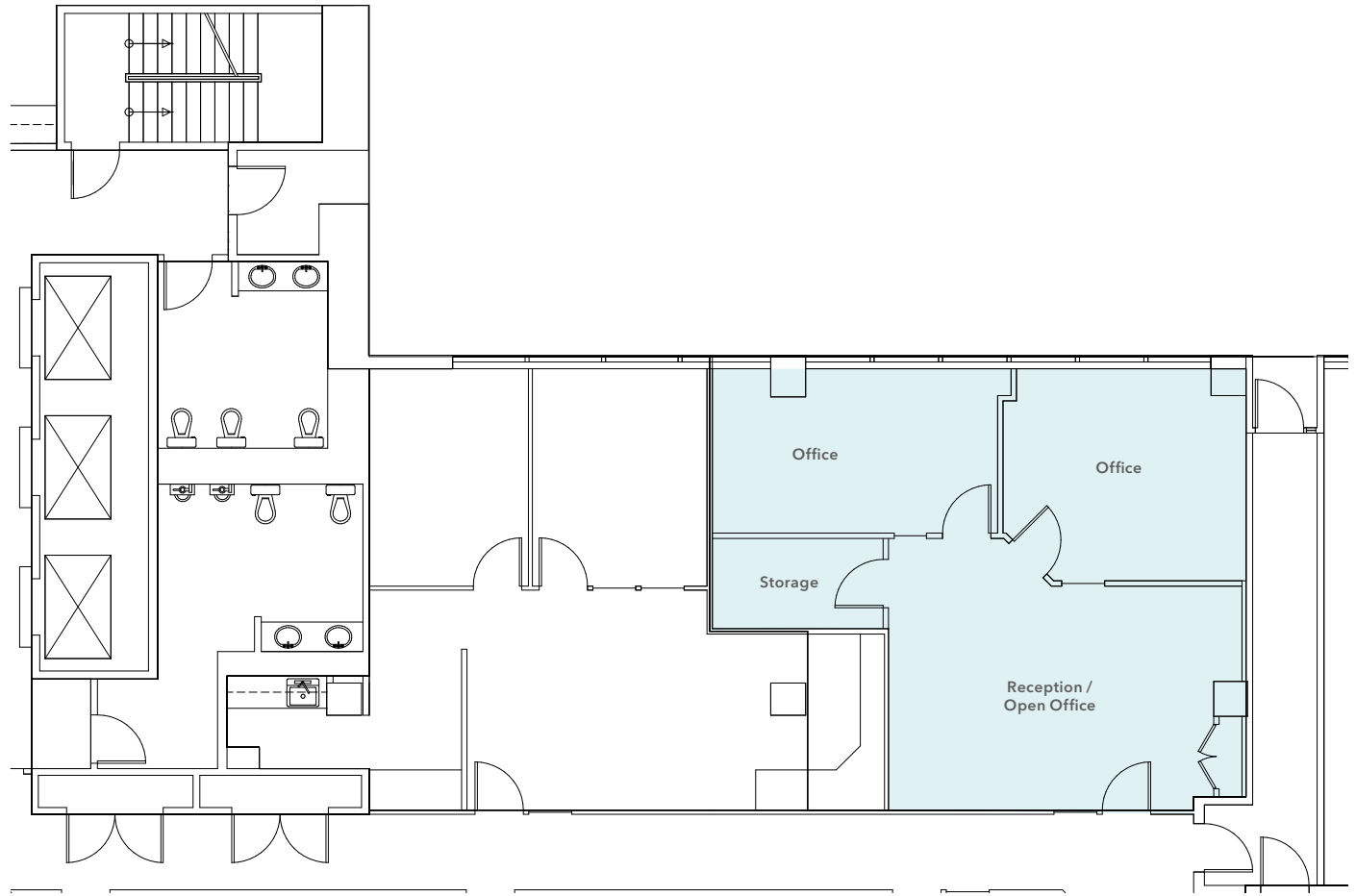


FOR LEASE

Queen Anne Square

200-220 WEST MERCER STREET, SEATTLE

EAST SUITE 107: 929 SF



JEFF HUNTINGTON
206.296.9619
jeff.huntington@kidder.com

TODD BATTISON
206.296.9621
todd.battison@kidder.com

MICHELLE CRABTREE, CPM, RPA
206.270.6503
mcrabtree@steelwavelc.com

KIDDER.COM

This information supplied herein is from sources we deem reliable. It is provided without any representation, warranty, or guarantee, expressed or implied as to its accuracy. Prospective Buyer or Tenant should conduct an independent investigation and verification of all matters deemed to be material, including, but not limited to, statements of income and expenses. Consult your attorney, accountant, or other professional advisor.

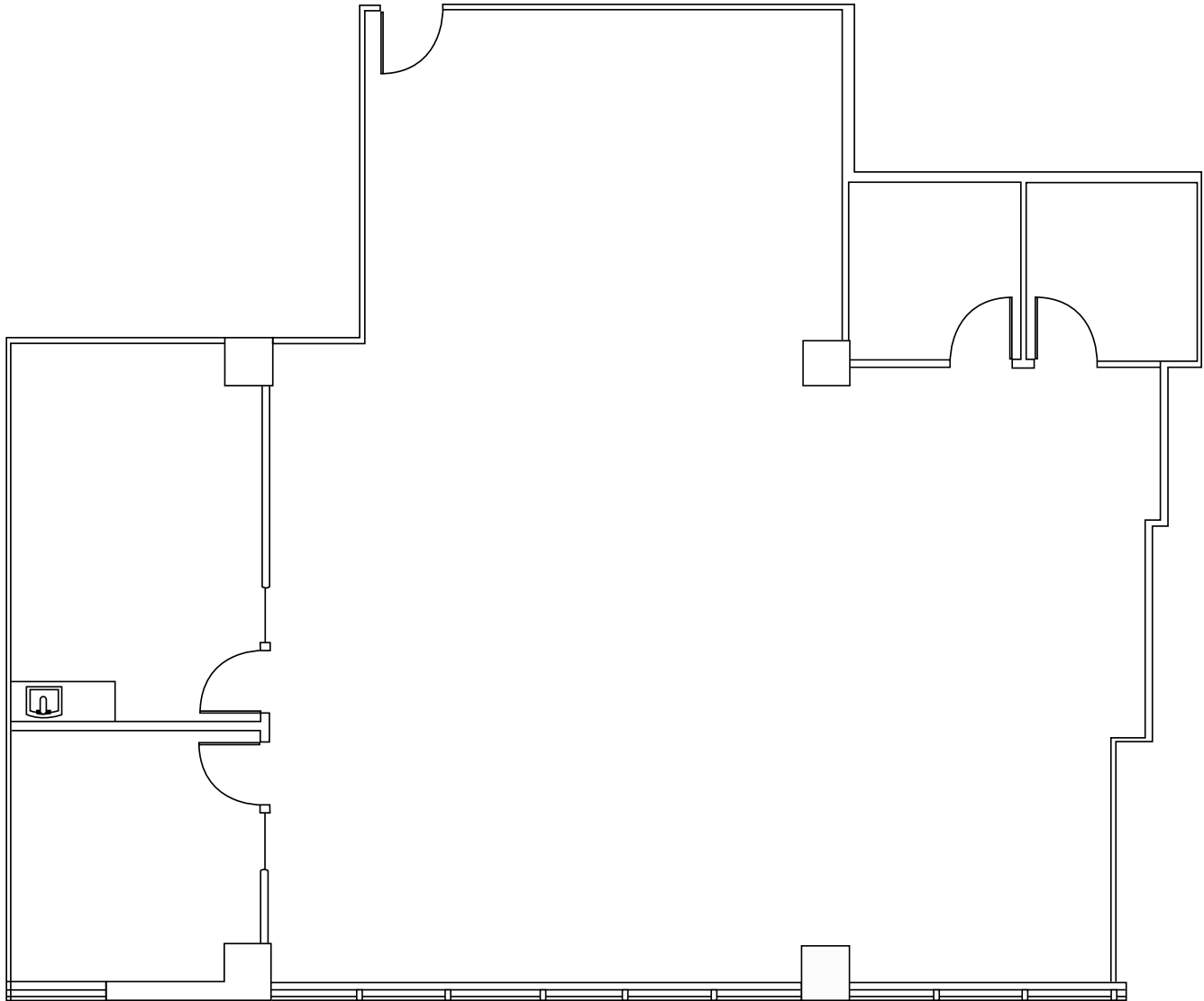


FOR LEASE

Queen Anne Square

200-220 WEST MERCER STREET, SEATTLE

EAST SUITE 209: 2,440 SF



JEFF HUNTINGTON
206.296.9619
jeff.huntington@kidder.com

TODD BATTISON
206.296.9621
todd.battison@kidder.com

MICHELLE CRABTREE, CPM, RPA
206.270.6503
mcrabtree@steelwavelc.com

KIDDER.COM

This information supplied herein is from sources we deem reliable. It is provided without any representation, warranty, or guarantee, expressed or implied as to its accuracy. Prospective Buyer or Tenant should conduct an independent investigation and verification of all matters deemed to be material, including, but not limited to, statements of income and expenses. Consult your attorney, accountant, or other professional advisor.

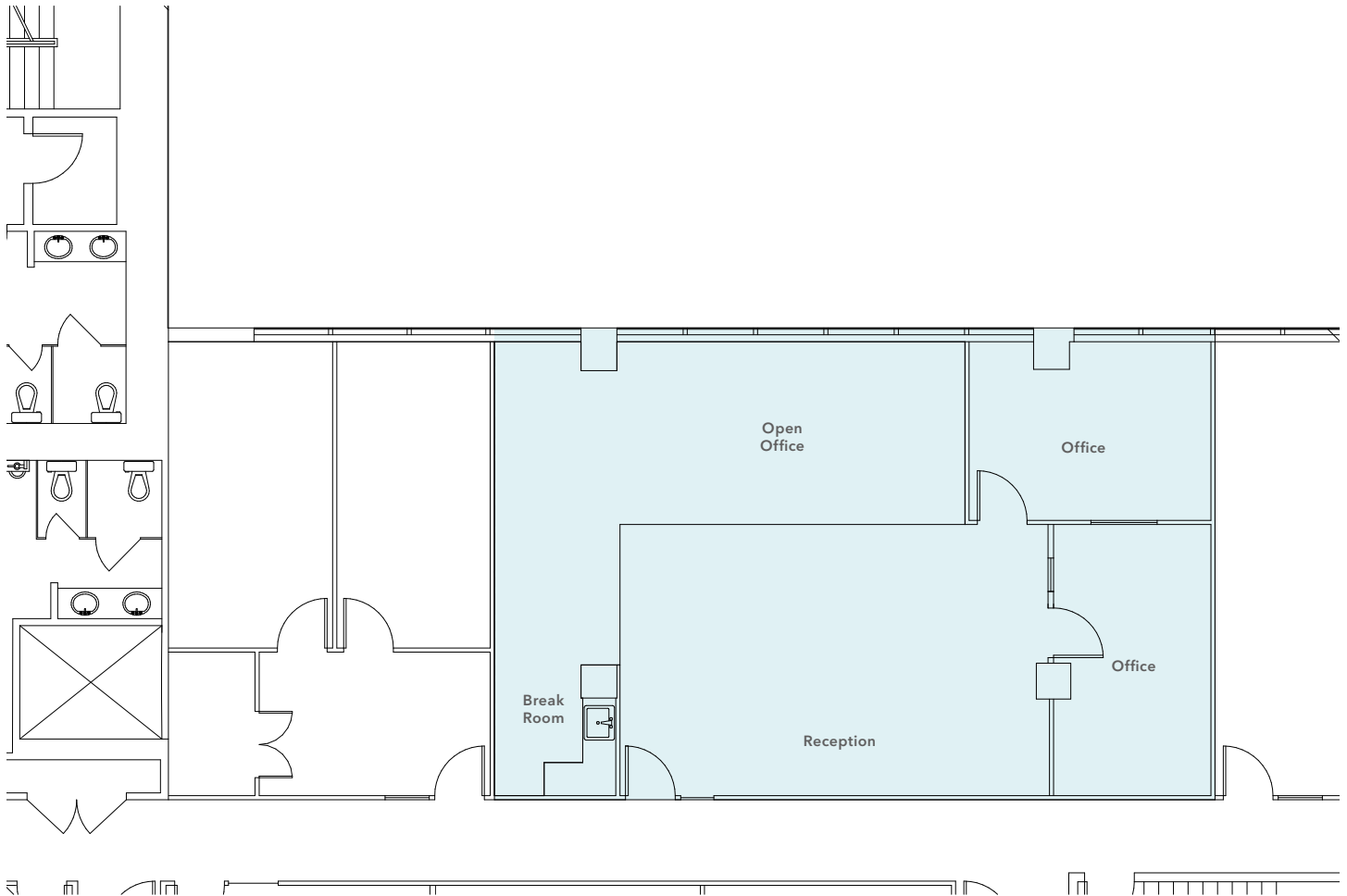


FOR LEASE

Queen Anne Square

200-220 WEST MERCER STREET, SEATTLE

EAST SUITE 305: 1,381 SF



JEFF HUNTINGTON
206.296.9619
jeff.huntington@kidder.com

TODD BATTISON
206.296.9621
todd.battison@kidder.com

MICHELLE CRABTREE, CPM, RPA
206.270.6503
mcrabtree@steelwavelc.com

KIDDER.COM

This information supplied herein is from sources we deem reliable. It is provided without any representation, warranty, or guarantee, expressed or implied as to its accuracy. Prospective Buyer or Tenant should conduct an independent investigation and verification of all matters deemed to be material, including, but not limited to, statements of income and expenses. Consult your attorney, accountant, or other professional advisor.

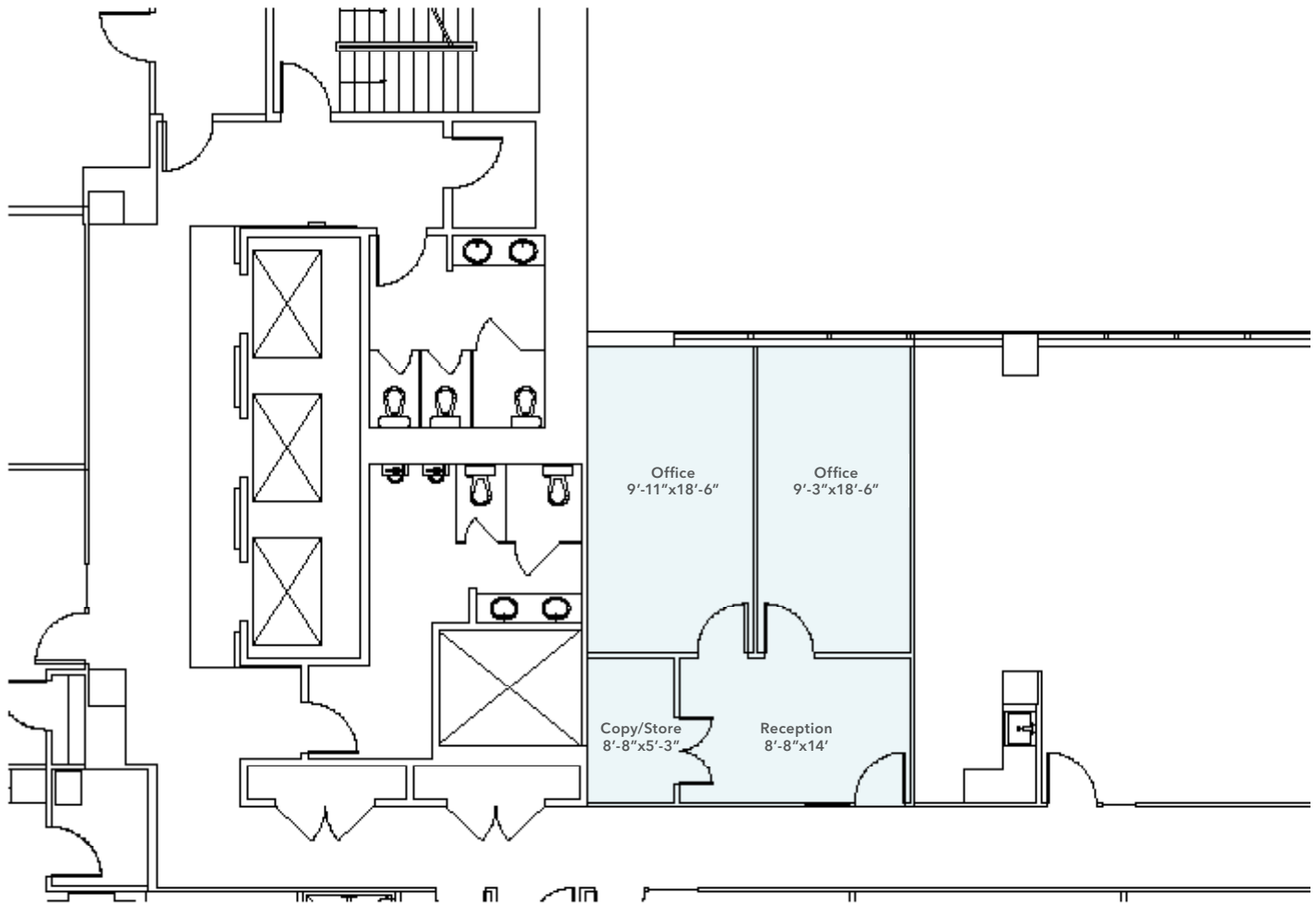


FOR LEASE

Queen Anne Square

200-220 WEST MERCER STREET, SEATTLE

EAST SUITE 307: 618 SF



JEFF HUNTINGTON
206.296.9619
jeff.huntington@kidder.com

TODD BATTISON
206.296.9621
todd.battison@kidder.com

MICHELLE CRABTREE, CPM, RPA
206.270.6503
mcrabtree@steelwavelc.com

KIDDER.COM

This information supplied herein is from sources we deem reliable. It is provided without any representation, warranty, or guarantee, expressed or implied as to its accuracy. Prospective Buyer or Tenant should conduct an independent investigation and verification of all matters deemed to be material, including, but not limited to, statements of income and expenses. Consult your attorney, accountant, or other professional advisor.

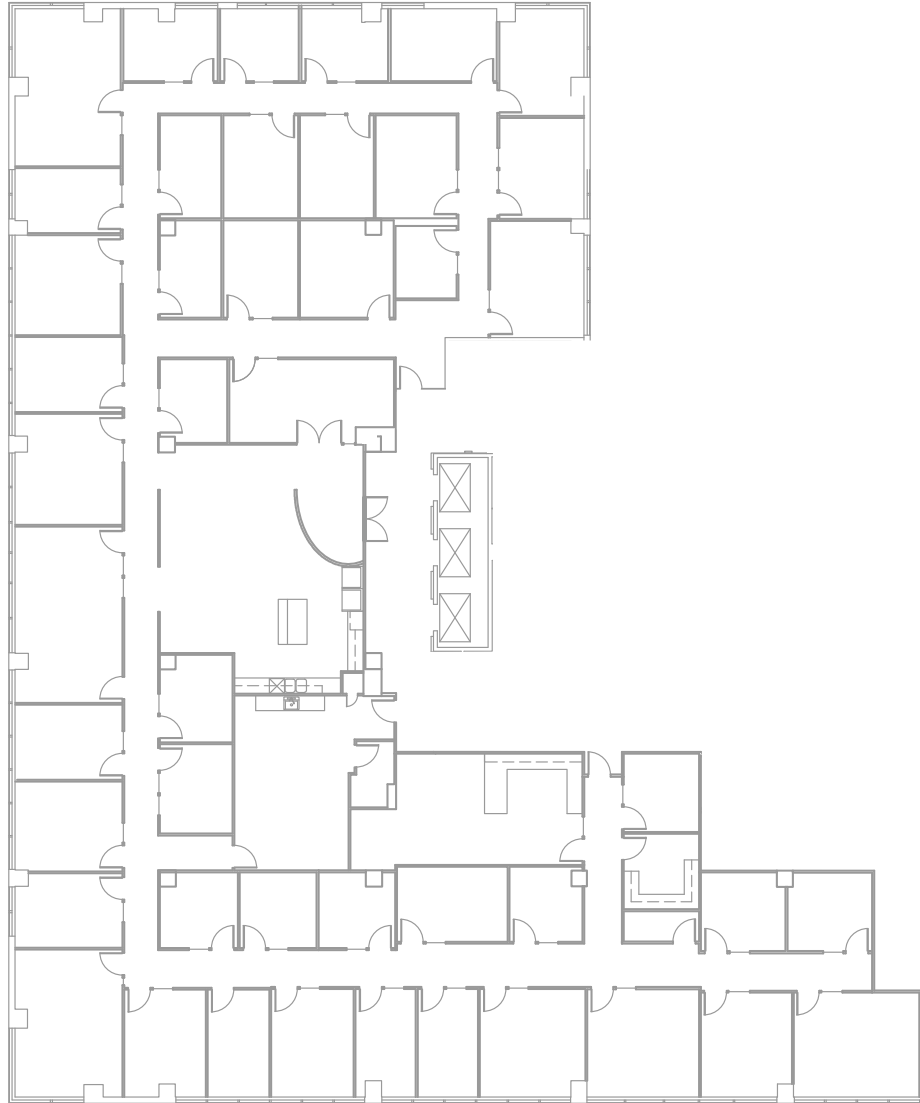


FOR LEASE

Queen Anne Square

200-220 WEST MERCER STREET, SEATTLE

EAST SUITE 401: 12,660 SF



JEFF HUNTINGTON
206.296.9619
jeff.huntington@kidder.com

TODD BATTISON
206.296.9621
todd.battison@kidder.com

MICHELLE CRABTREE, CPM, RPA
206.270.6503
mcrabtree@steelwavelc.com

KIDDER.COM

This information supplied herein is from sources we deem reliable. It is provided without any representation, warranty, or guarantee, expressed or implied as to its accuracy. Prospective Buyer or Tenant should conduct an independent investigation and verification of all matters deemed to be material, including, but not limited to, statements of income and expenses. Consult your attorney, accountant, or other professional advisor.

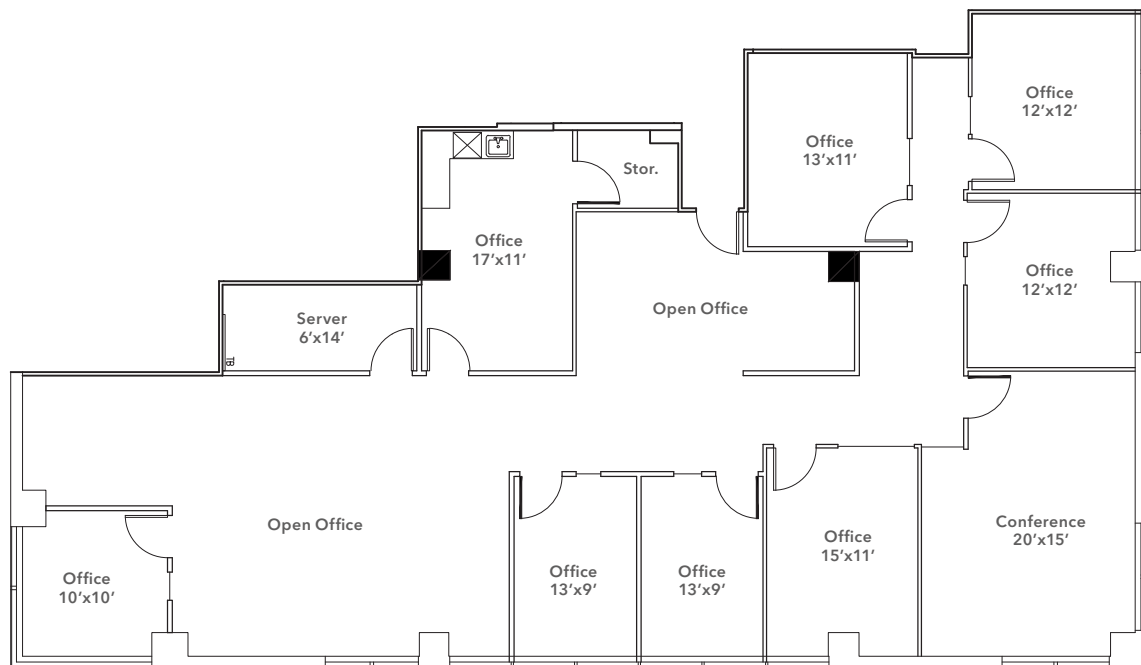


FOR LEASE

Queen Anne Square

200-220 WEST MERCER STREET, SEATTLE

EAST SUITE 411: 3,216 SF



JEFF HUNTINGTON
206.296.9619
jeff.huntington@kidder.com

TODD BATTISON
206.296.9621
todd.battison@kidder.com

MICHELLE CRABTREE, CPM, RPA
206.270.6503
mcrabtree@steelwavelc.com

KIDDER.COM

This information supplied herein is from sources we deem reliable. It is provided without any representation, warranty, or guarantee, expressed or implied as to its accuracy. Prospective Buyer or Tenant should conduct an independent investigation and verification of all matters deemed to be material, including, but not limited to, statements of income and expenses. Consult your attorney, accountant, or other professional advisor.

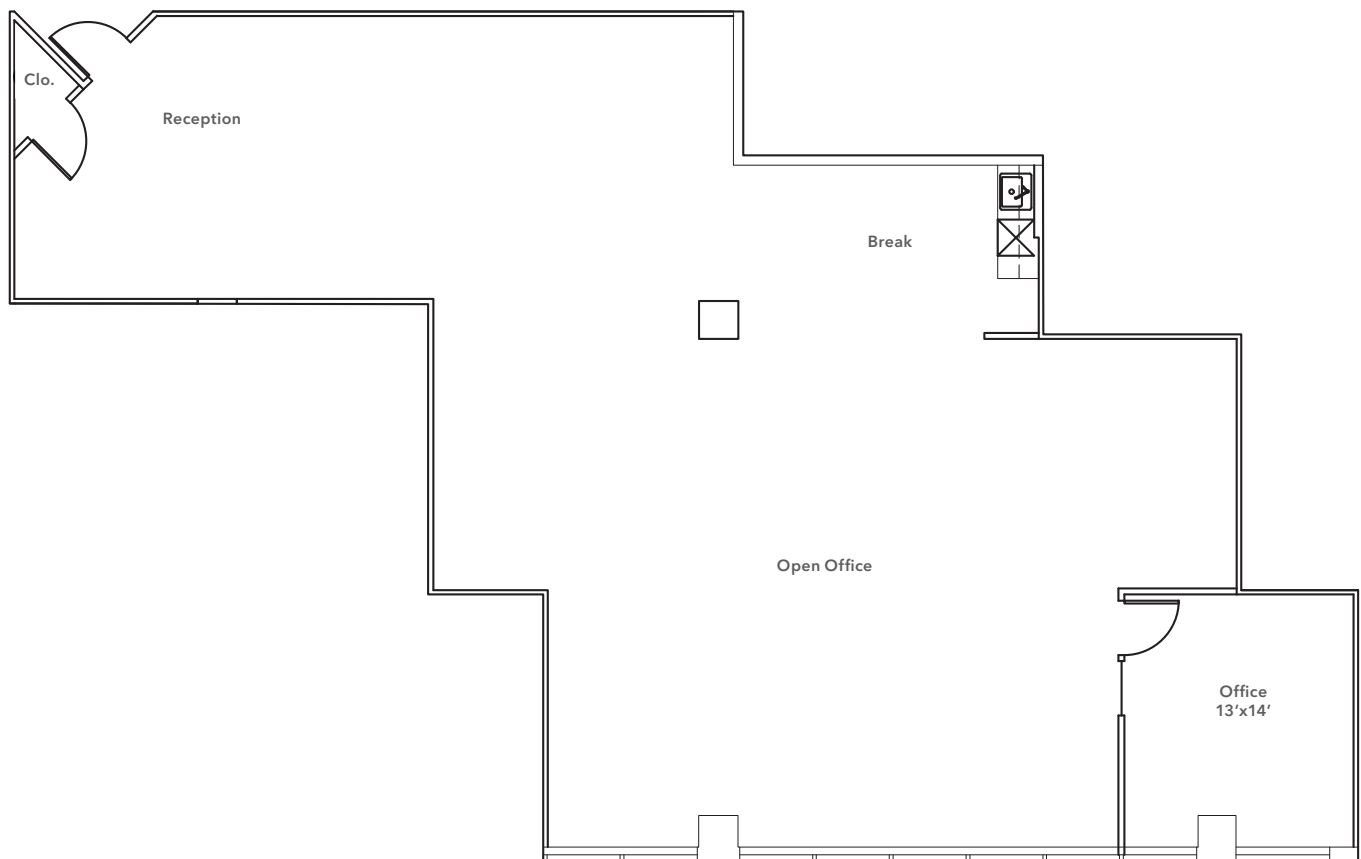


FOR LEASE

Queen Anne Square

200-220 WEST MERCER STREET, SEATTLE

EAST SUITE 412: 2,358 SF



JEFF HUNTINGTON
206.296.9619
jeff.huntington@kidder.com

TODD BATTISON
206.296.9621
todd.battison@kidder.com

MICHELLE CRABTREE, CPM, RPA
206.270.6503
mcrabtree@steelwavelc.com

KIDDER.COM

This information supplied herein is from sources we deem reliable. It is provided without any representation, warranty, or guarantee, expressed or implied as to its accuracy. Prospective Buyer or Tenant should conduct an independent investigation and verification of all matters deemed to be material, including, but not limited to, statements of income and expenses. Consult your attorney, accountant, or other professional advisor.

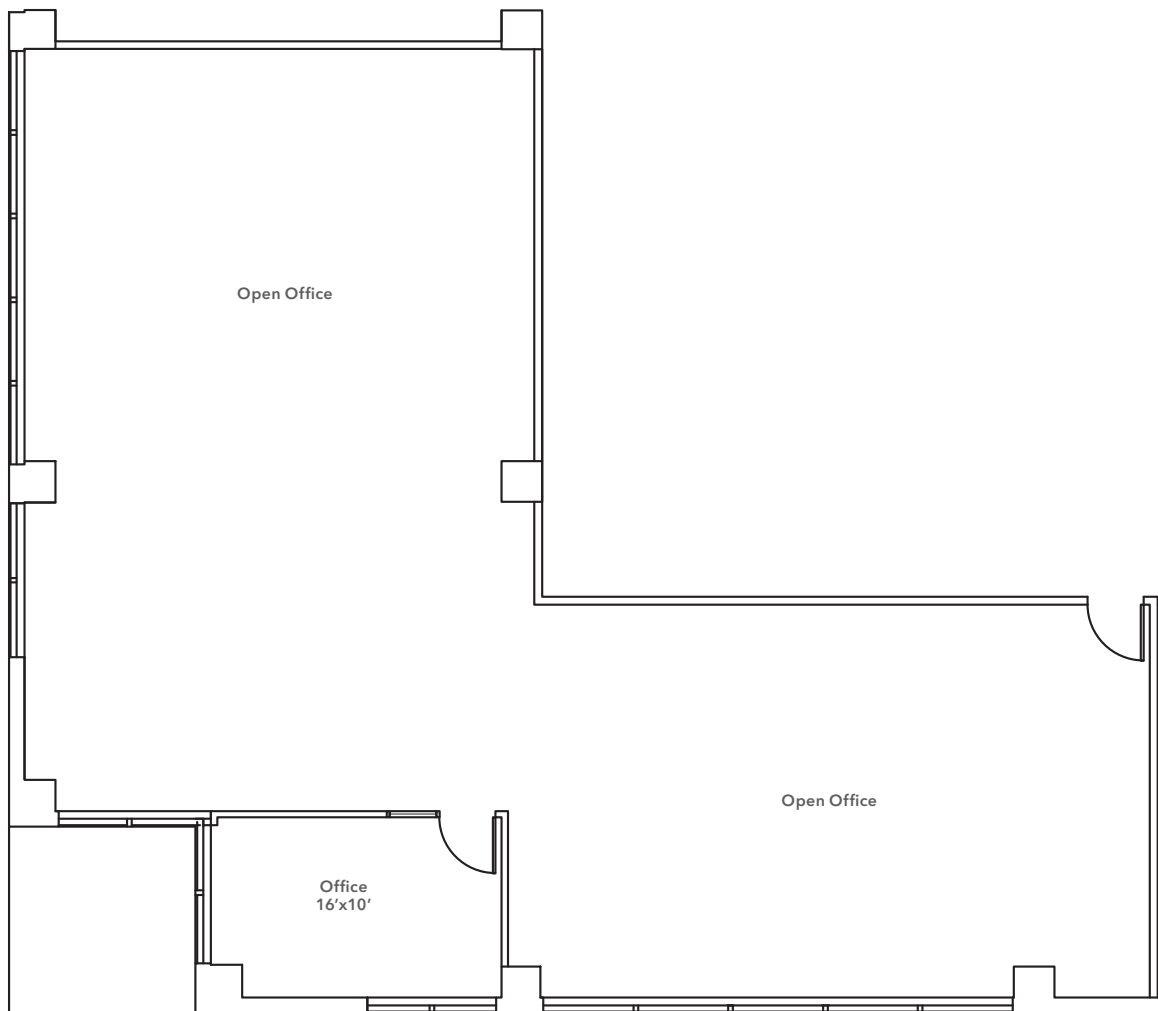


FOR LEASE

Queen Anne Square

200-220 WEST MERCER STREET, SEATTLE

WEST SUITE 225: 2,466 SF



JEFF HUNTINGTON
206.296.9619
jeff.huntington@kidder.com

TODD BATTISON
206.296.9621
todd.battison@kidder.com

MICHELLE CRABTREE, CPM, RPA
206.270.6503
mcrabtree@steelwavelc.com

KIDDER.COM

This information supplied herein is from sources we deem reliable. It is provided without any representation, warranty, or guarantee, expressed or implied as to its accuracy. Prospective Buyer or Tenant should conduct an independent investigation and verification of all matters deemed to be material, including, but not limited to, statements of income and expenses. Consult your attorney, accountant, or other professional advisor.

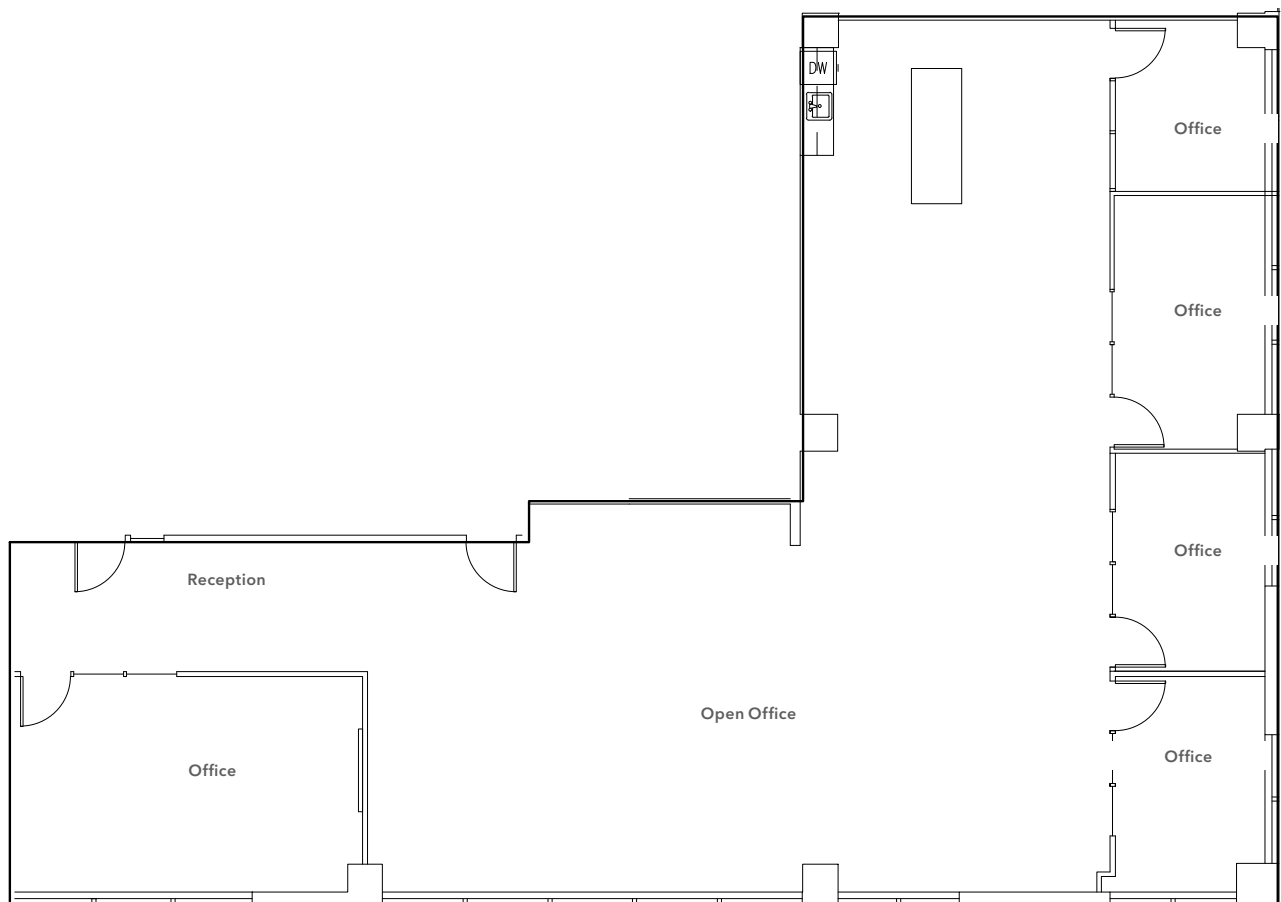


FOR LEASE

Queen Anne Square

200-220 WEST MERCER STREET, SEATTLE

WEST SUITE 250: 3,002 SF



JEFF HUNTINGTON
206.296.9619
jeff.huntington@kidder.com

TODD BATTISON
206.296.9621
todd.battison@kidder.com

MICHELLE CRABTREE, CPM, RPA
206.270.6503
mcrabtree@steelwavelc.com

KIDDER.COM

This information supplied herein is from sources we deem reliable. It is provided without any representation, warranty, or guarantee, expressed or implied as to its accuracy. Prospective Buyer or Tenant should conduct an independent investigation and verification of all matters deemed to be material, including, but not limited to, statements of income and expenses. Consult your attorney, accountant, or other professional advisor.

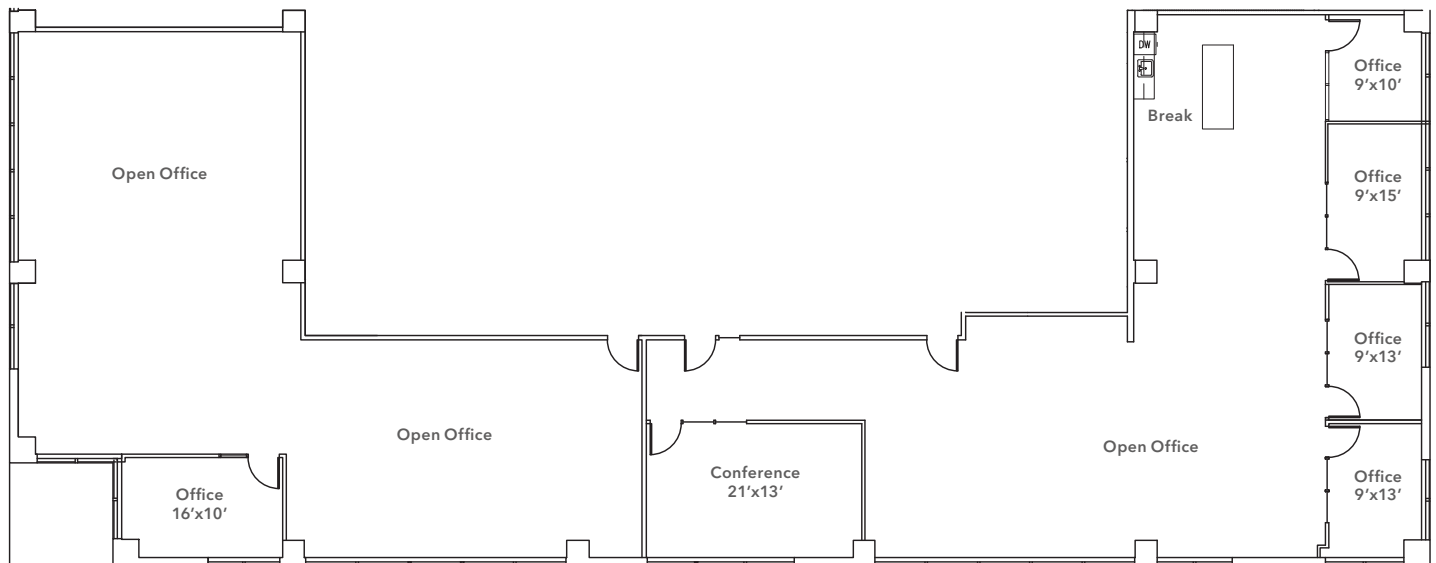


FOR LEASE

Queen Anne Square

200-220 WEST MERCER STREET, SEATTLE

WEST SUITES 225 & 250 COMBINED: 5,468 SF



JEFF HUNTINGTON
206.296.9619
jeff.huntington@kidder.com

TODD BATTISON
206.296.9621
todd.battison@kidder.com

MICHELLE CRABTREE, CPM, RPA
206.270.6503
mcrabtree@steelwavelc.com

KIDDER.COM

This information supplied herein is from sources we deem reliable. It is provided without any representation, warranty, or guarantee, expressed or implied as to its accuracy. Prospective Buyer or Tenant should conduct an independent investigation and verification of all matters deemed to be material, including, but not limited to, statements of income and expenses. Consult your attorney, accountant, or other professional advisor.



FOR LEASE

Queen Anne Square

200-220 WEST MERCER STREET, SEATTLE

WEST SUITE 300: 9,045 SF



JEFF HUNTINGTON
206.296.9619
jeff.huntington@kidder.com

TODD BATTISON
206.296.9621
todd.battison@kidder.com

MICHELLE CRABTREE, CPM, RPA
206.270.6503
mcrabtree@steelwavelc.com

KIDDER.COM

This information supplied herein is from sources we deem reliable. It is provided without any representation, warranty, or guarantee, expressed or implied as to its accuracy. Prospective Buyer or Tenant should conduct an independent investigation and verification of all matters deemed to be material, including, but not limited to, statements of income and expenses. Consult your attorney, accountant, or other professional advisor.

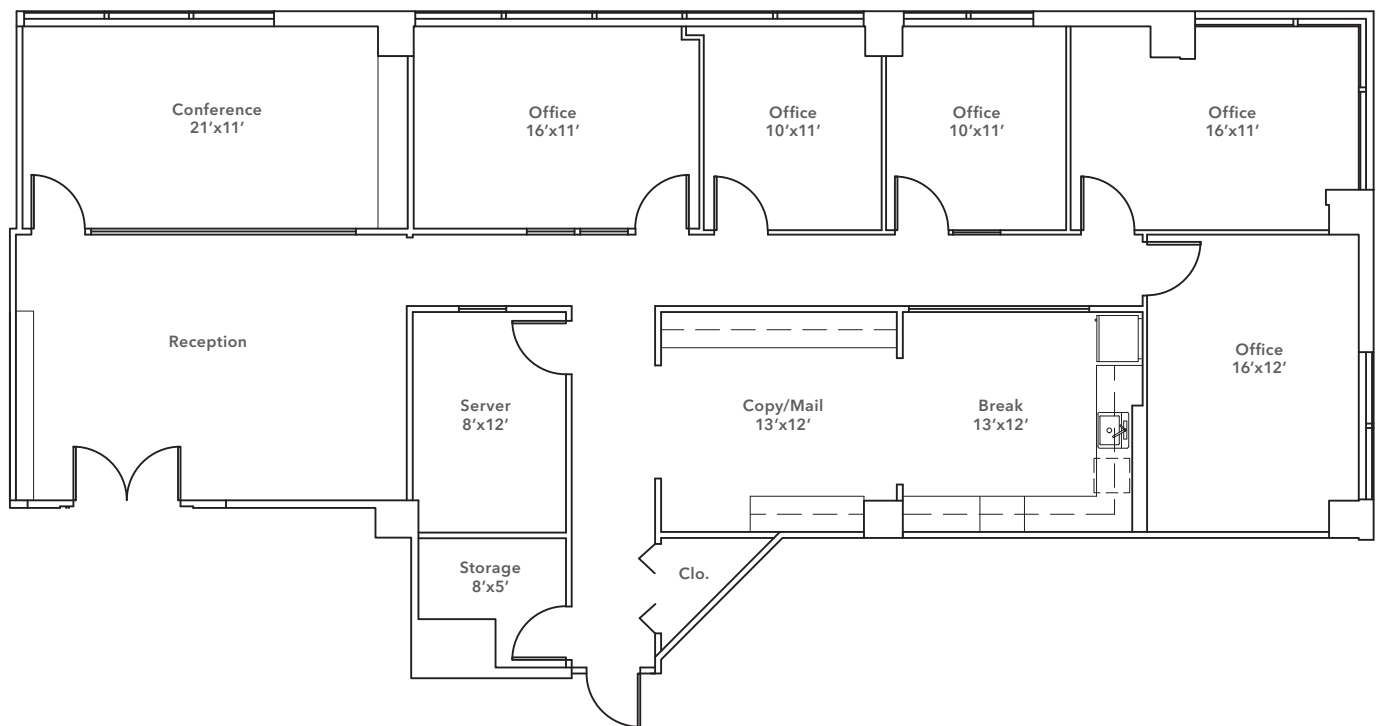


FOR LEASE

Queen Anne Square

200-220 WEST MERCER STREET, SEATTLE

WEST SUITE 400: 2,745 SF



JEFF HUNTINGTON
206.296.9619
jeff.huntington@kidder.com

TODD BATTISON
206.296.9621
todd.battison@kidder.com

MICHELLE CRABTREE, CPM, RPA
206.270.6503
mcrabtree@steelwavelc.com

KIDDER.COM

This information supplied herein is from sources we deem reliable. It is provided without any representation, warranty, or guarantee, expressed or implied as to its accuracy. Prospective Buyer or Tenant should conduct an independent investigation and verification of all matters deemed to be material, including, but not limited to, statements of income and expenses. Consult your attorney, accountant, or other professional advisor.



FOR LEASE

Queen Anne Square

200-220 WEST MERCER STREET, SEATTLE

3 MIN

TO SEATTLE CENTER

6 MIN

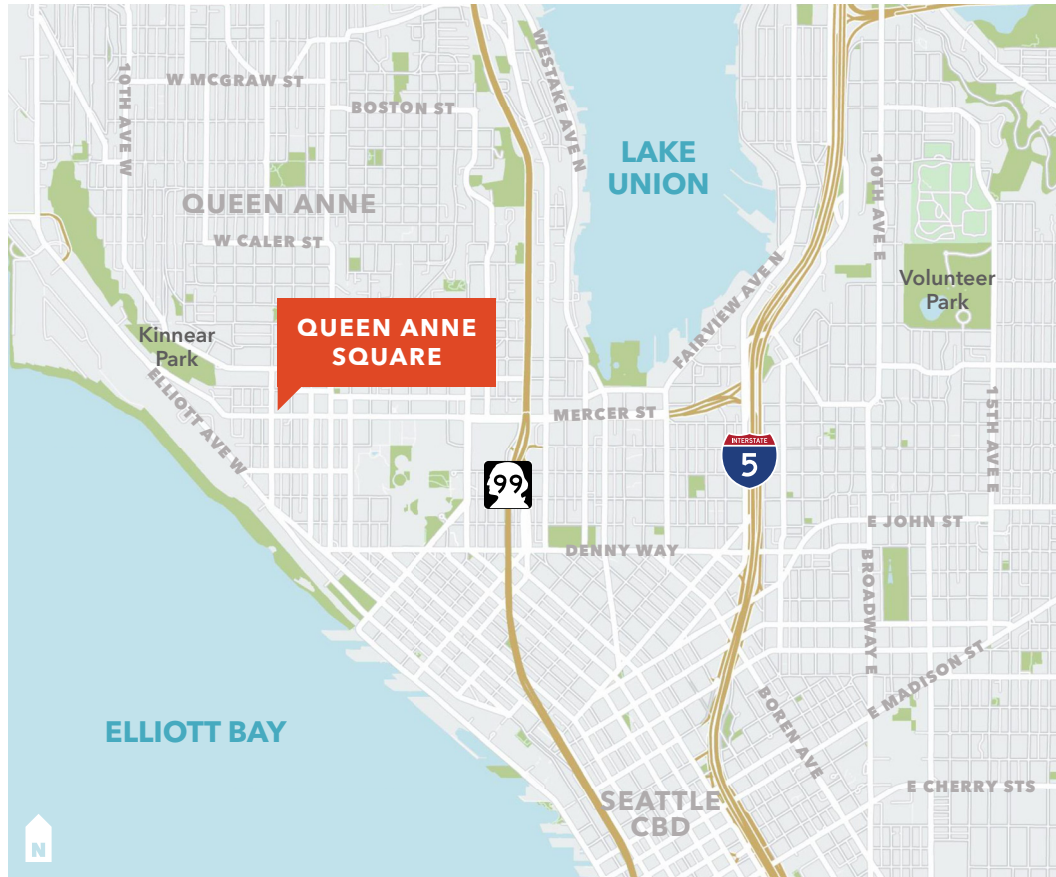
TO HIGHWAY 99

9 MIN

TO INTERSTATE 5

10 MIN

TO SEATTLE CBD



JEFF HUNTINGTON

206.296.9619

jeff.huntington@kidder.com

TODD BATTISON

206.296.9621

todd.battison@kidder.com

MICHELLE CRABTREE, CPM, RPA

206.270.6503

mcrabtree@steelwavelc.com

KIDDER.COM

This information supplied herein is from sources we deem reliable. It is provided without any representation, warranty, or guarantee, expressed or implied as to its accuracy. Prospective Buyer or Tenant should conduct an independent investigation and verification of all matters deemed to be material, including, but not limited to, statements of income and expenses. Consult your attorney, accountant, or other professional advisor.

km Kidder Mathews