



# Installation and Operation Instructions


## 2020 PIU C3100/C3900 SPEAKER

**IMPORTANT!** Read all instructions before installing and using. Installer: This manual must be delivered to the end user.



### WARNING!

Failure to install or use this product according to manufacturer's recommendations may result in property damage, serious injury, and/or death to those you are seeking to protect!

 **Do not install and/or operate this safety product unless you have read and understood the safety information contained in this manual.**

1. Proper installation combined with operator training in the use, care, and maintenance of emergency warning devices are essential to ensure the safety of emergency personnel and the public.
2. Emergency warning devices often require high electrical voltages and/or currents. Exercise caution when working with live electrical connections.
3. This product must be properly grounded. Inadequate grounding and/or shorting of electrical connections can cause high current arcing, which can cause personal injury and/or severe vehicle damage, including fire.
4. Proper placement and installation is vital to the performance of this warning device. Install this product so that output performance of the system is maximized and the controls are placed within convenient reach of the operator so that they can operate the system without losing eye contact with the roadway.
5. Do not install this product or route any wires in the deployment area of an air bag. Equipment mounted or located in an air bag deployment area may reduce the effectiveness of the air bag or become a projectile that could cause serious personal injury or death. Refer to the vehicle owner's manual for the air bag deployment area. It is the responsibility of the user/operator to determine a suitable mounting location ensuring the safety of all passengers inside the vehicle particularly avoiding areas of potential head impact.
6. It is the responsibility of the vehicle operator to ensure daily that all features of this product work correctly. In use, the vehicle operator should ensure the projection of the warning signal is not blocked by vehicle components (i.e., open trunks or compartment doors), people, vehicles or other obstructions.
7. The use of this or any other warning device does not ensure all drivers can or will observe or react to an emergency warning signal. Never take the right-of-way for granted. It is the vehicle operator's responsibility to be sure they can proceed safely before entering an intersection, drive against traffic, respond at a high rate of speed, or walk on or around traffic lanes.
8. This equipment is intended for use by authorized personnel only. The user is responsible for understanding and obeying all laws regarding emergency warning devices. Therefore, the user should check all applicable city, state, and federal laws and regulations. The manufacturer assumes no liability for any loss resulting from the use of this warning device.

## Installation and Mounting:

**Step 1.** Consult the factory service manual to remove the front bumper cover from the vehicle.

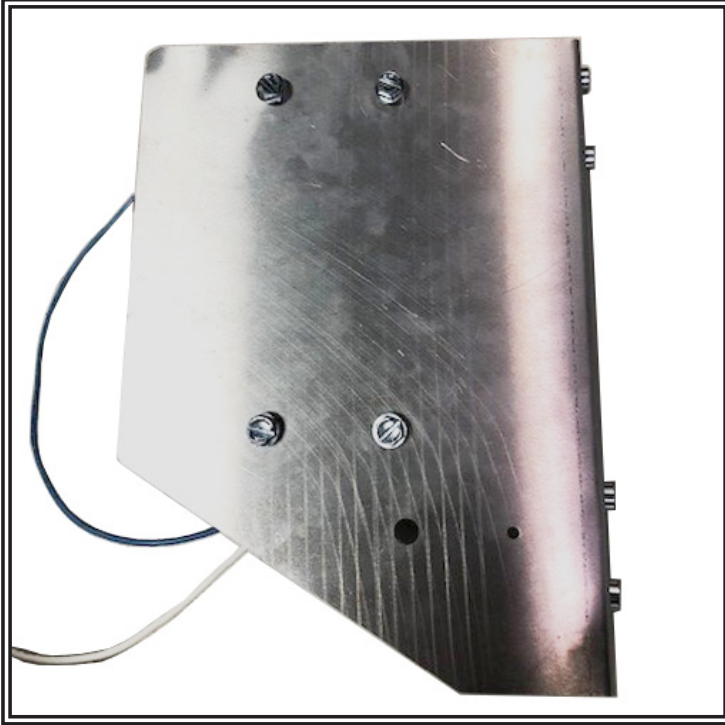
**Step 2.** Test fit the bracket into position as shown in Figure 3. The bracket is positioned behind the center brace. Slight drilling/reaming of the holes in the brace may be required for the mounting screws provided in this kit.

**Step 3.** Mount the desired speaker (C3100/C3900) to the desired bracket using the supplied fasteners as shown in Figure 1. C3100 with the (4) four supplied screws, C3900 with the (2) two supplied screws.

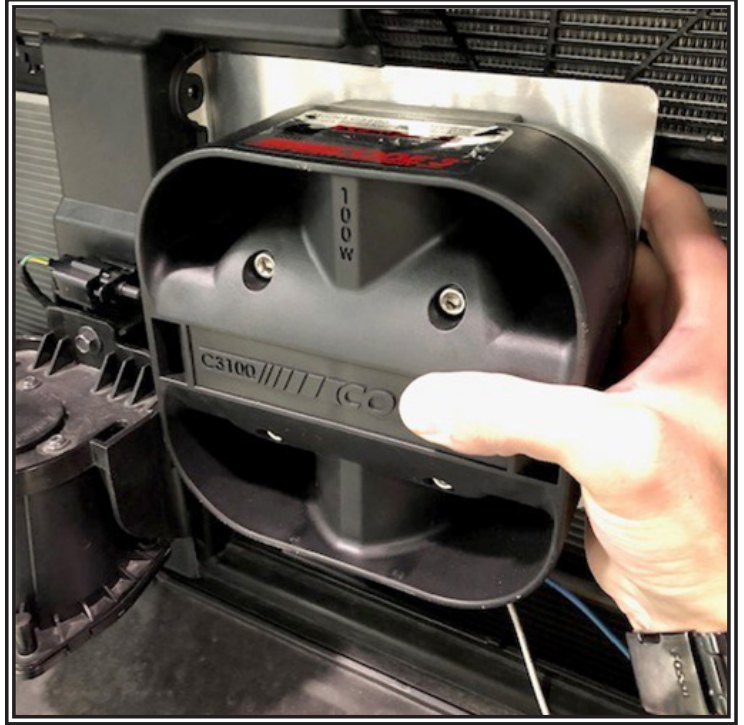
**Step 4.** Position the bracket behind the central support as shown in Figure 2.

**Step 5.** Mount the bracket into position using (4) supplied 1/4-20 fasteners in positions as indicated in Figure 3.

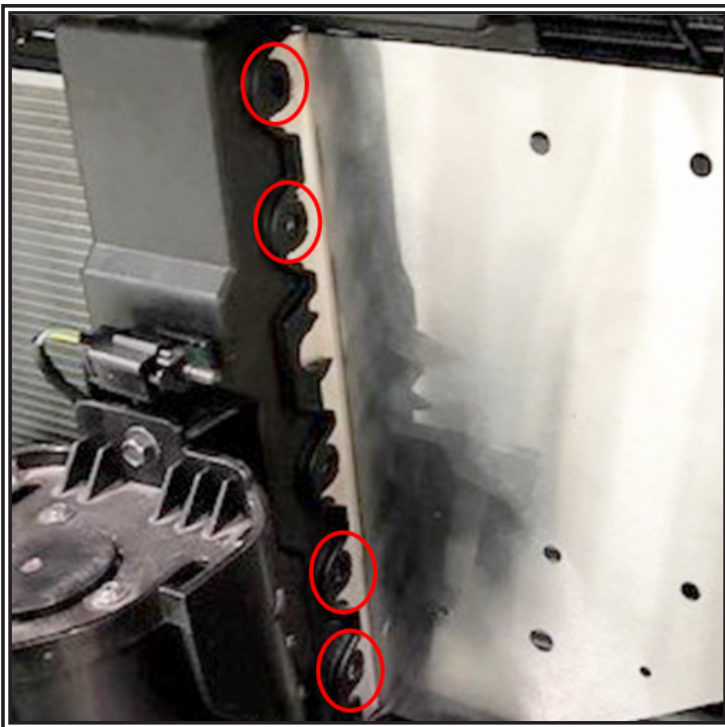
**Step 6.** (For Dual Speaker Applications) - Repeat process using the opposite side speaker bracket, mirroring the position on the central brace.



**Figure 1**



**Figure 2**



**Figure 3**

**Notes:**

## Warranty:

### Manufacturer Limited Warranty Policy:

Manufacturer warrants that on the date of purchase this product will conform to Manufacturer's specifications for this product (which are available from the Manufacturer upon request). This Limited Warranty extends for Sixty (60) months from the date of purchase.

**DAMAGE TO PARTS OR PRODUCTS RESULTING FROM TAMPERING, ACCIDENT, ABUSE, MISUSE, NEGLIGENCE, UNAPPROVED MODIFICATIONS, FIRE OR OTHER HAZARD; IMPROPER INSTALLATION OR OPERATION; OR NOT BEING MAINTAINED IN ACCORDANCE WITH THE MAINTENANCE PROCEDURES SET FORTH IN MANUFACTURER'S INSTALLATION AND OPERATING INSTRUCTIONS VOIDS THIS LIMITED WARRANTY.**

### Exclusion of Other Warranties:

MANUFACTURER MAKES NO OTHER WARRANTIES, EXPRESS OR IMPLIED. THE IMPLIED WARRANTIES FOR MERCHANTABILITY, QUALITY OR FITNESS FOR A PARTICULAR PURPOSE, OR ARISING FROM A COURSE OF DEALING, USAGE OR TRADE PRACTICE ARE HEREBY EXCLUDED AND SHALL NOT APPLY TO THE PRODUCT AND ARE HEREBY DISCLAIMED, EXCEPT TO THE EXTENT PROHIBITED BY APPLICABLE LAW. ORAL STATEMENTS OR REPRESENTATIONS ABOUT THE PRODUCT DO NOT CONSTITUTE WARRANTIES.

### Remedies and Limitation of Liability:

MANUFACTURER'S SOLE LIABILITY AND BUYER'S EXCLUSIVE REMEDY IN CONTRACT, TORT (INCLUDING NEGLIGENCE), OR UNDER ANY OTHER THEORY AGAINST MANUFACTURER REGARDING THE PRODUCT AND ITS USE SHALL BE, AT MANUFACTURER'S DISCRETION, THE REPLACEMENT OR REPAIR OF THE PRODUCT, OR THE REFUND OF THE PURCHASE PRICE PAID BY BUYER FOR NON-CONFORMING PRODUCT. IN NO EVENT SHALL MANUFACTURER'S LIABILITY ARISING OUT OF THIS LIMITED WARRANTY OR ANY OTHER CLAIM RELATED TO THE MANUFACTURER'S PRODUCTS EXCEED THE AMOUNT PAID FOR THE PRODUCT BY BUYER AT THE TIME OF THE ORIGINAL PURCHASE. IN NO EVENT SHALL MANUFACTURER BE LIABLE FOR LOST PROFITS, THE COST OF SUBSTITUTE EQUIPMENT OR LABOR, PROPERTY DAMAGE, OR OTHER SPECIAL, CONSEQUENTIAL, OR INCIDENTAL DAMAGES BASED UPON ANY CLAIM FOR BREACH OF CONTRACT, IMPROPER INSTALLATION, NEGLIGENCE, OR OTHER CLAIM, EVEN IF MANUFACTURER OR A MANUFACTURER'S REPRESENTATIVE HAS BEEN ADVISED OF THE POSSIBILITY OF SUCH DAMAGES. MANUFACTURER SHALL HAVE NO FURTHER OBLIGATION OR LIABILITY WITH RESPECT TO THE PRODUCT OR ITS SALE, OPERATION AND USE, AND MANUFACTURER NEITHER ASSUMES NOR AUTHORIZES THE ASSUMPTION OF ANY OTHER OBLIGATION OR LIABILITY IN CONNECTION WITH SUCH PRODUCT.

This Limited Warranty defines specific legal rights. You may have other legal rights which vary from jurisdiction to jurisdiction. Some jurisdictions do not allow the exclusion or limitation of incidental or consequential damages.

### Product Returns:

If a product must be returned for repair or replacement\*, please contact our factory to obtain a Return Goods Authorization Number (RGA number) before you ship the product to Code 3®, Inc. Write the RGA number clearly on the package near the mailing label. Be sure you use sufficient packing materials to avoid damage to the product being returned while in transit.

\*Code 3®, Inc. reserves the right to repair or replace at its discretion. Code 3®, Inc. assumes no responsibility or liability for expenses incurred for the removal and /or reinstallation of products requiring service and/or repair; nor for the packaging, handling, and shipping; nor for the handling of products returned to sender after the service has been rendered.



10986 North Warson Road  
St. Louis, MO 63114

**Technical Service**

USA (314) 996-2800

c3\_tech\_support@code3esg.com

**Customer Service**

UK +44 (0)113 237 5340

AUS +61 (0)3 63322444

[www.code3esg.com](http://www.code3esg.com)

An ECCO SAFETY GROUP™ Brand  
[www.eccosafetygroup.com](http://www.eccosafetygroup.com)



# Installation and Operation Instructions

## C3100 SPEAKER MOUNT - 2015+ PI UTILITY FOR SINGLE AND DUAL SPEAKERS

### Introduction:

This C3100 Speaker Mounting Bracket kit fits 2015+ PI Utility & mounts the Code3 C3100 speaker either singly or in pairs side by side.

### Contents:

Specifications.....	01
Installation and Mounting.....	02-03
Warranty.....	04

### Specifications:

The C3100 Speaker Mounting bracket kit fits 2015+ PI Utility and mounts the Code3 C3100 speaker either singly or in pairs side by side. The bracket dimensions are 14.00" Wide X 11.375 High X 1.10" Deep.

For C3100 speaker specifications, wiring & operation, see the Code3 C3100 installation manual.



**DUAL SPEAKER MOUNT SHOWN**



#### **WARNING!**

Sirens produce loud sounds that may damage hearing



- Wear hearing protection when testing
- Use siren only for emergency response
- Roll up windows when siren is operating
- Avoid exposure to the siren sound outside of vehicle

**IMPORTANT!** Read all instructions before installing and using. Installer: This manual must be delivered to the end user.



#### **WARNING!**

Failure to install or use this product according to manufacturers recommendations may result in property damage, serious injury, and/or death to those you are seeking to protect!



**Do not install and/or operate this safety product unless you have read and understand the safety information contained in this manual.**

1. Proper installation combined with operator training in the use, care, and maintenance of emergency warning devices are essential to ensure the safety of emergency personnel and the public.
2. Emergency warning devices often require high electrical voltages and/or currents. Exercise caution when working with live electrical connections.
3. This product must be properly grounded. Inadequate grounding and/or shorting of electrical connections can cause high current arcing, which can cause personal injury and/or severe vehicle damage, including fire.
4. Proper placement and installation is vital to the performance of this warning device. Install this product so that output performance of the system is maximized and the controls are placed within convenient reach of the operator so that s/he can operate the system without losing eye contact with the roadway.
5. It is the responsibility of the vehicle operator to ensure daily that all features of this product work correctly. In use, the vehicle operator should ensure the projection of the warning signal is not blocked by vehicle components (i.e., open trunks or compartment doors), people, vehicles or other obstructions.
6. The use of this or any other warning device does not ensure all drivers can or will observe or react to an emergency warning signal. Never take the right-of-way for granted. It is your responsibility to be sure you can proceed safely before entering an intersection, drive against traffic, respond at a high rate of speed, or walk on or around traffic lanes.
7. This equipment is intended for use by authorized personnel only. The user is responsible for understanding and obeying all laws regarding emergency warning devices. Therefore, the user should check all applicable city, state, and federal laws and regulations. The manufacturer assumes no liability for any loss resulting from the use of this warning device.

## Installation and Mounting:

**Step 1.** For a single speaker application, assemble the C3100 speaker to the mounting bracket as shown in figure 1. For a dual speaker application, assemble the C3100 speaker to the mounting plate as shown in figure 2. Use (4) of the #12 phillips head screws and star lock washers that are supplied in the #55025 hardware bags to mount each of the C3100 speakers. Make sure the "MOUNT WITH THIS END UP" "CAUTION!" label is on the top as oriented in the views in Figures 1, 2 & 3 below. Discard the remaining hardware.

**Step 2.** Refer to the Ford Service manual for steps required to remove the front fascia from the PI Utility.

**Step 3.** Note the (2) existing holes that are 12 1/4 inches apart in the PI Utility's front bumper brace (See Figure 3 Front View below). Position the speaker assembly with the speakers facing forward on the vehicle and slip the mounting flange up behind the PI Utility's bumper brace (The back side of the brace is flat while the front side is curved to match the curvature of the front fascia). Align the (2) holes in the speaker bracket mounting flange with the holes in the PI Utility's bumper brace and slip the (2) provided 5/16"-18 X 3" long stainless steel bolts from the back side through the holes in the bracket and through the holes in the vehicle's bumper brace. Slip a provided 5/16 I.D. X 1 1/4" O.D. fender washer over the threads of the bolts and thread a provided 5/16" hex locking nut onto each of the bolts. See Figure 4 on page 3 for a cross section view of the assembly.

**Step 3.** Have an assistant hold the speakers up or prop something under the speakers so they are positioned up under the PI Utility's bumper brace and tighten the nuts until they are snugged up and the speakers are up close to the bottom of the bumper brace (about 1/8" to 1/4" Gap).

**Step 4.** Route the wiring as desired to connect the speakers to the siren.

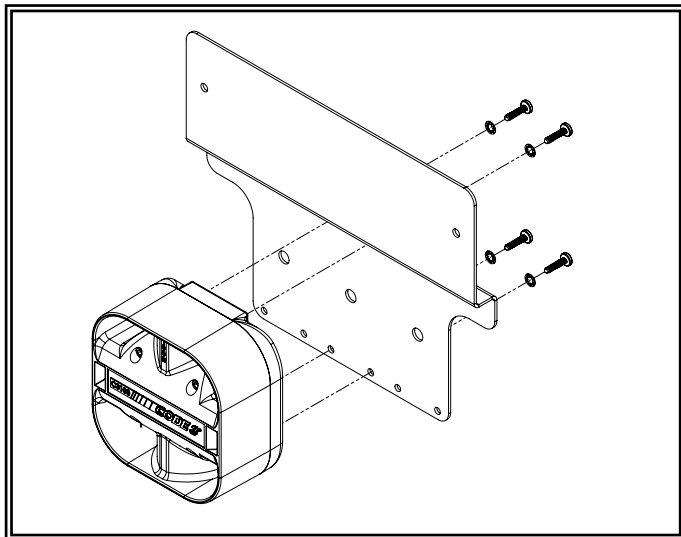


Figure 1 Single Speaker Version

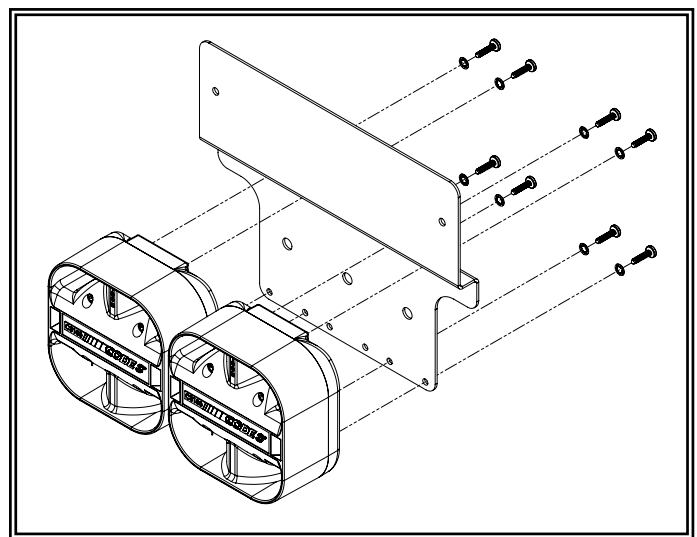


Figure 2 Dual Speaker Version

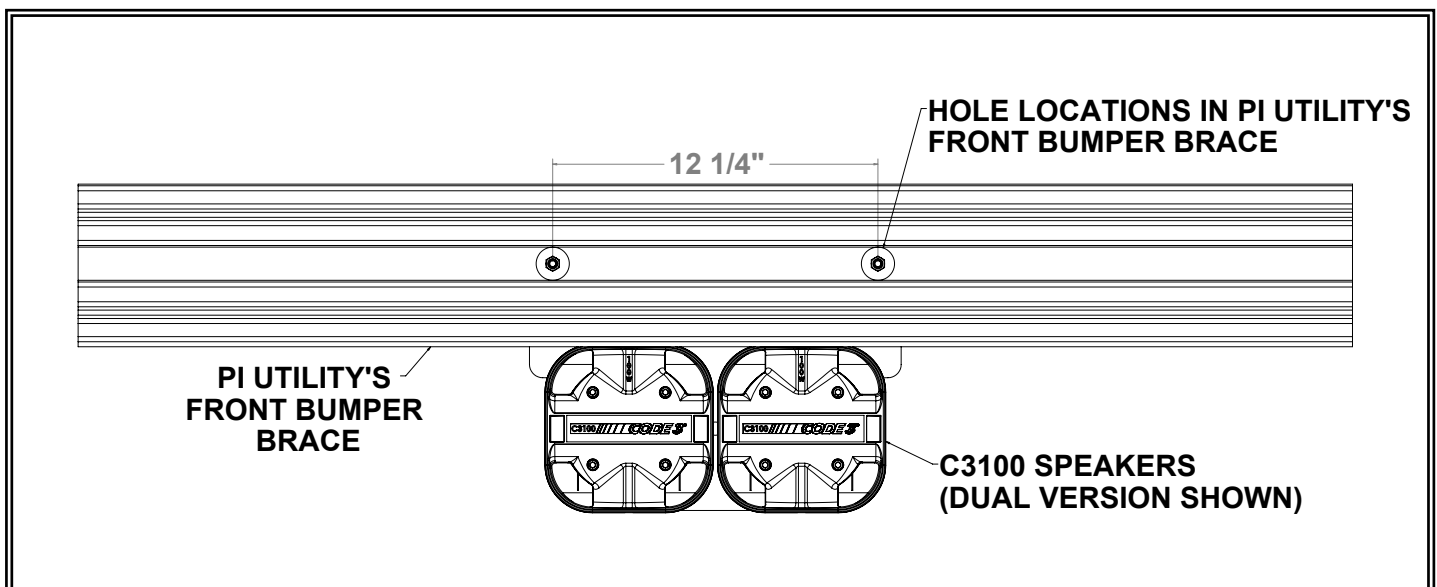


Figure 3 Front View

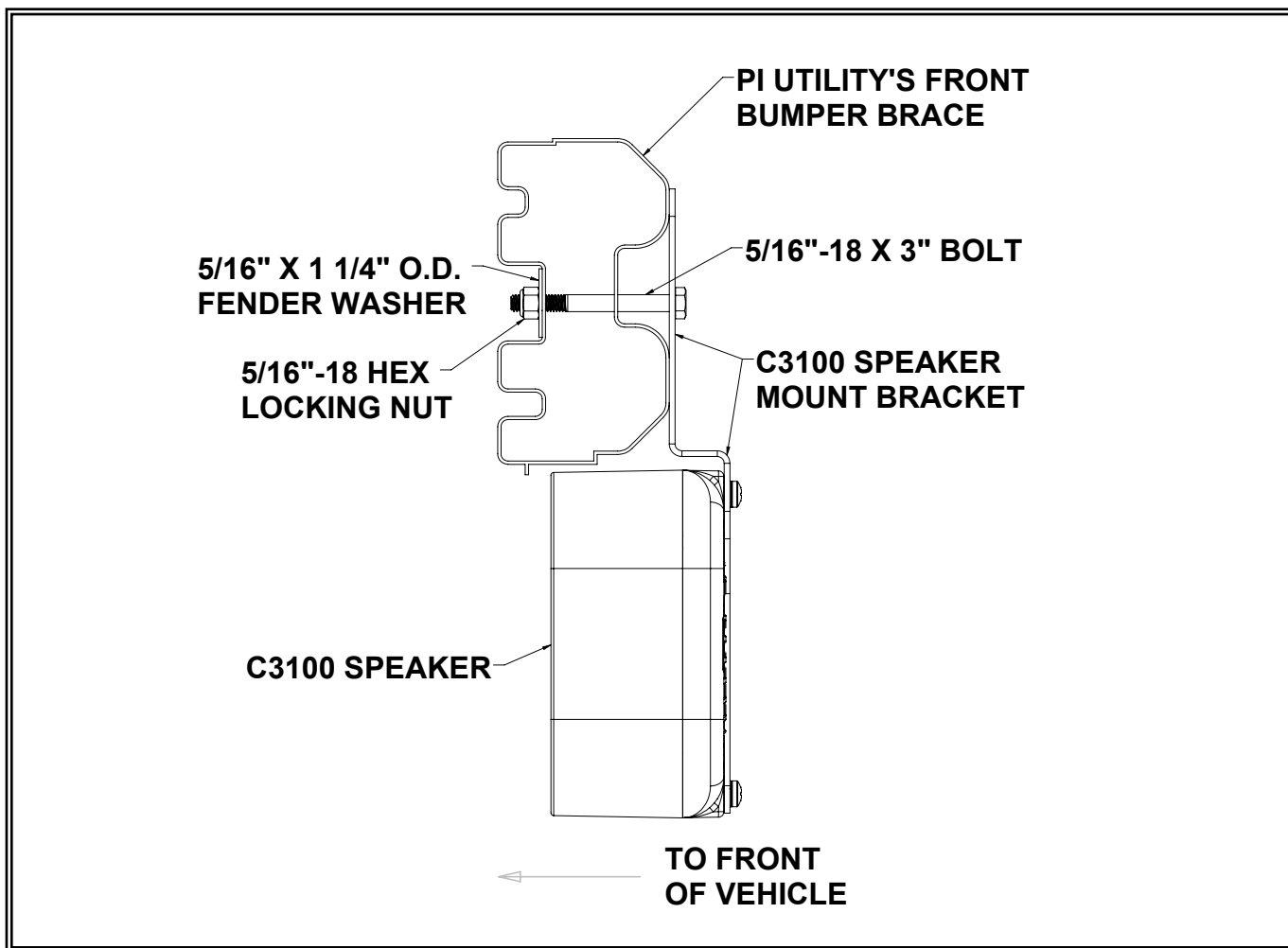


Figure 4 Cross Sectional View



## **Manufacturer Limited Warranty Policy:**

Manufacturer warrants that on the date of purchase this product will conform to Manufacturer's specifications for this product (which are available from the Manufacturer upon request). This Limited Warranty extends for Sixty (60) months from the date of purchase.

**DAMAGE TO PARTS OR PRODUCTS RESULTING FROM TAMPERING, ACCIDENT, ABUSE, MISUSE, NEGLIGENCE, UNAPPROVED MODIFICATIONS, FIRE OR OTHER HAZARD; IMPROPER INSTALLATION OR OPERATION; OR NOT BEING MAINTAINED IN ACCORDANCE WITH THE MAINTENANCE PROCEDURES SET FORTH IN MANUFACTURER'S INSTALLATION AND OPERATING INSTRUCTIONS VOIDS THIS LIMITED WARRANTY.**

### **Exclusion of Other Warranties:**

MANUFACTURER MAKES NO OTHER WARRANTIES, EXPRESS OR IMPLIED. THE IMPLIED WARRANTIES FOR MERCHANTABILITY, QUALITY OR FITNESS FOR A PARTICULAR PURPOSE, OR ARISING FROM A COURSE OF DEALING, USAGE OR TRADE PRACTICE ARE HEREBY EXCLUDED AND SHALL NOT APPLY TO THE PRODUCT AND ARE HEREBY DISCLAIMED, EXCEPT TO THE EXTENT PROHIBITED BY APPLICABLE LAW. ORAL STATEMENTS OR REPRESENTATIONS ABOUT THE PRODUCT DO NOT CONSTITUTE WARRANTIES.

### **Remedies and Limitation of Liability:**

MANUFACTURER'S SOLE LIABILITY AND BUYER'S EXCLUSIVE REMEDY IN CONTRACT, TORT (INCLUDING NEGLIGENCE), OR UNDER ANY OTHER THEORY AGAINST MANUFACTURER REGARDING THE PRODUCT AND ITS USE SHALL BE, AT MANUFACTURER'S DISCRETION, THE REPLACEMENT OR REPAIR OF THE PRODUCT, OR THE REFUND OF THE PURCHASE PRICE PAID BY BUYER FOR NON-CONFORMING PRODUCT. IN NO EVENT SHALL MANUFACTURER'S LIABILITY ARISING OUT OF THIS LIMITED WARRANTY OR ANY OTHER CLAIM RELATED TO THE MANUFACTURER'S PRODUCTS EXCEED THE AMOUNT PAID FOR THE PRODUCT BY BUYER AT THE TIME OF THE ORIGINAL PURCHASE. IN NO EVENT SHALL MANUFACTURER BE LIABLE FOR LOST PROFITS, THE COST OF SUBSTITUTE EQUIPMENT OR LABOR, PROPERTY DAMAGE, OR OTHER SPECIAL, CONSEQUENTIAL, OR INCIDENTAL DAMAGES BASED UPON ANY CLAIM FOR BREACH OF CONTRACT, IMPROPER INSTALLATION, NEGLIGENCE, OR OTHER CLAIM, EVEN IF MANUFACTURER OR A MANUFACTURER'S REPRESENTATIVE HAS BEEN ADVISED OF THE POSSIBILITY OF SUCH DAMAGES. MANUFACTURER SHALL HAVE NO FURTHER OBLIGATION OR LIABILITY WITH RESPECT TO THE PRODUCT OR ITS SALE, OPERATION AND USE, AND MANUFACTURER NEITHER ASSUMES NOR AUTHORIZES THE ASSUMPTION OF ANY OTHER OBLIGATION OR LIABILITY IN CONNECTION WITH SUCH PRODUCT.

This Limited Warranty defines specific legal rights. You may have other legal rights which vary from jurisdiction to jurisdiction. Some jurisdictions do not allow the exclusion or limitation of incidental or consequential damages.

## **Product Returns:**

If a product must be returned for repair or replacement\*, please contact our factory to obtain a Return Goods Authorization Number (RGA number) before you ship the product to Code 3®, Inc. Write the RGA number clearly on the package near the mailing label. Be sure you use sufficient packing materials to avoid damage to the product being returned while in transit.

\*Code 3®, Inc. reserves the right to repair or replace at its discretion. Code 3®, Inc. assumes no responsibility or liability for expenses incurred for the removal and /or reinstallation of products requiring service and/or repair; nor for the packaging, handling, and shipping; nor for the handling of products returned to sender after the service has been rendered.



10986 North Warson Road  
St. Louis, MO 63114

**Technical Service**

(314) 996-2800

c3\_tech\_support@code3esg.com

www.code3esg.com

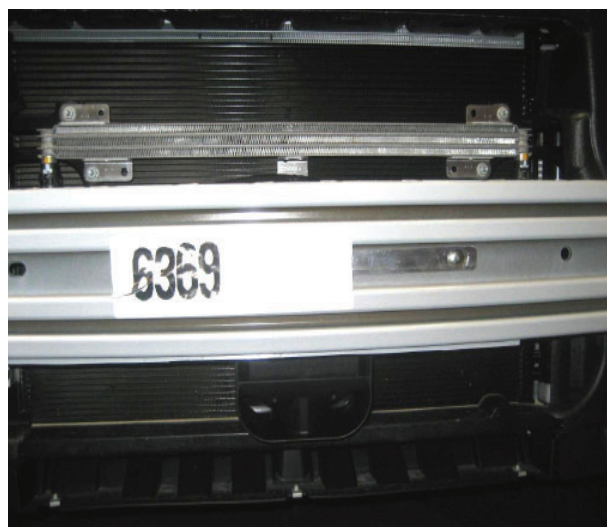
An ECCO SAFETY GROUP™ Company

www.eccosafetygroup.com



# INSTALLATION & OPERATION MANUAL

UTILITY INTERCEPTOR SHOWN:



2011 FORD EXPLORER &  
2012-13 Utility Interceptor  
Speaker Bracket

Position : Below bumper installation shown,  
Installation does not interfere with auxiliary cooler on Utility Interceptor version of Explorer.

Code 3,® Inc., a subsidiary of  
Public Safety Equipment, Inc.

**CODE 3**®  
PUBLIC SAFETY EQUIPMENT, INC.

## 2011-13 FORD EXPLORER & UTILITY INTERCEPTOR SPEAKER INSTALLATION

### Table of Contents:

Page No:	Description:
1.	Preparation for installation
2.	Bolt-On Easy Installation of speaker to vehicle bumper system
3.	Reinstalling the vehicle facia, Wiring connections and Installation notes
4.	Warranty Information

### Preparation for Installation:

1. Access to the rear and front of the bumper extrusion is required in order to complete hardware installation and make wiring connections.
  - Remove top engine shroud cover (2 push in fasteners & 6 hex head screws)
  - Remove phillips head screws from both front wheel well forward areas
  - Remove hex head screws from lower facia behind air dam area of vehicle
  - Remove (2) phillips head screws from DS & PS facia under front wheel well trim
  - Remove facia & grill from vehicle & unplug fog light connectors DS & PS

**IMPORTANT:**

*Read all instructions and warnings before installing and using.*  
**INSTALLER:** *This manual must be delivered to the end user of this equipment.*

**NOTE:** While vehicle facia is removed, installation of grill light brackets, Par 36 LED lighthouse brackets and wiring harnesses may be easily accomplished.

### **Bolt - On Installation of Speaker Bracket to bumper system on vehicle: (No Drilling Necessary)**

DOMESTIC EXPLORER SHOWN:



fig 1

1. removal of the front facia exposes the bumper area for speaker installation. Locate (2) center holes in the mid section

*retaining strap bracket*



*carriage bolts*

fig 3 (FRONT VIEW)

3. install 4.5" stainless steel carriage bolts through retaining strap bracket, (Included in kit), and place through holes in center of bumper.  
4. place speaker bracket over bolt ends with speaker facing forward

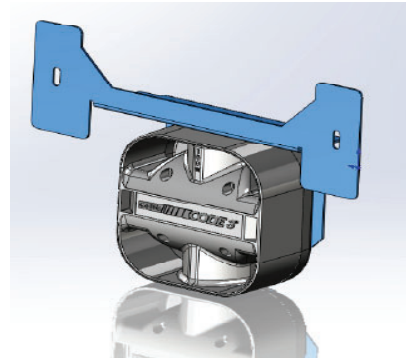


fig 2

2. install speaker onto bracket using the hardware provided. Speaker should sit inside bracket recess as shown in fig. 2.



fig 4 (TOP VIEW)

5. install flat washer, lock washer and nut on the back side of the speaker bracket.  
6. slide bracket up in mounting slots and tighten nuts using wrench.

**NOTE:**

Speaker should sit above lower lip of radiator housing and away from the front of the radiator fins. No contact with the radiator should be allowed.

## Re-installation of vehicle facia:

1. Pre-determine wiring connections for speaker to wiring harness prior to re-installation of vehicle facia.
2. Place vehicle facia into place and set top engine shroud over top edge of facia.
3. Place (2) plastic push-in fasteners through top engine shroud to hold it in place.
4. Hand insert and start one hex head fastener on each end of top engine shroud and through the top leading edge of front facia. (These will hold facia in place for further installation)
5. Lift the wheel well trim cover and place facia into edges around each headlight and snap trailing edge of facia into groove around front wheel well. The facia will snap into place on each side of the vehicle at this point.
6. Re-install phillips head screws into sides of front facia and around each wheel well.
7. Re-install hex head screws along underside of facia behind air dam of lower facia.

## WIRING CONNECTIONS:

Extend the BLUE (Positive) and the WHITE (Negative) speaker wires to your siren amplifier and connect as shown in the amplifiers instructions and test the siren for proper operation.

## Notes:



## WARNING!

Larger wires and tight connections will provide longer service life for components. For high current wires it is highly recommended that terminal blocks or soldered connections be used with shrink tubing to protect the connections. Do not use insulation displacement connectors (e.g. 3M® Scotchlock type connectors). Route wiring using grommets and sealant when passing through compartment walls. Minimize the number of splices to reduce voltage drop. High ambient temperatures (e.g. underhood) will significantly reduce the current carrying capacity of wires, fuses, and circuit breakers. Use "SXL" type wire in engine compartment. All wiring should conform to the minimum wire size and other recommendations of the manufacturer and be protected from moving parts and hot surfaces. Looms, grommets, cable ties, and similar installation hardware should be used to anchor and protect all wiring. Fuses or circuit breakers should be located as close to the power takeoff points as possible and properly sized to protect the wiring and devices. Particular attention should be paid to the location and method of making electrical connections and splices to protect these points from corrosion and loss of conductivity. Ground terminations should only be made to substantial chassis components, preferably directly to the vehicle battery. The user should install a fuse sized to approximately 125% of the maximum Amp capacity in the supply line to protect against short circuits. For example, a 30 Amp fuse should carry a maximum of 24 Amps. **DO NOT USE 1/4" DIAMETER GLASS FUSES AS THEY ARE NOT SUITABLE FOR CONTINUOUS DUTY IN SIZES ABOVE 15 AMPS.** Circuit breakers are very sensitive to high temperatures and will "false trip" when mounted in hot environments or operated close to their capacity.

Wear hearing protection when testing. Use siren only for emergency response. Roll up windows when siren is operating. Avoid exposure to the siren sound outside of vehicle.

## WARRANTY

Code 3, Inc.'s emergency devices are tested and found to be operational at the time of manufacture. Provided they are installed and operated in accordance with manufacturer's recommendations, Code 3, Inc. guarantees all parts and components except the lamps to a period of 1 year (unless otherwise expressed) from the date of purchase or delivery, whichever is later. Units demonstrated to be defective within the warranty period will be repaired or replaced at the factory service center at no cost.

Use of lamp or other electrical load of a wattage higher than installed or recommended by the factory, or use of inappropriate or inadequate wiring or circuit protection causes this warranty to become void. Failure or destruction of the product resulting from abuse or unusual use and/or accidents is not covered by this warranty. Code 3, Inc. shall in no way be liable for other damages including consequential, indirect or special damages whether loss is due to negligence or breach of warranty.

**CODE 3, INC. MAKES NO OTHER EXPRESS OR IMPLIED WARRANTY INCLUDING, WITHOUT LIMITATION, WARRANTIES OF FITNESS OR MERCHANTABILITY, WITH RESPECT TO THIS PRODUCT.**

## PRODUCT RETURNS

If a product must be returned for repair or replacement\*, please contact our factory to obtain a Return Goods Authorization Number (RGA number) before you ship the product to Code 3, Inc. Write the RGA number clearly on the package near the mailing label. Be sure you use sufficient packing materials to avoid damage to the product being returned while in transit.

\*Code 3, Inc. reserves the right to repair or replace at its discretion. Code 3, Inc. assumes no responsibility or liability for expenses incurred for the removal and/or reinstallation of products requiring service and/or repair; nor for the packaging, handling, and shipping; nor for the handling of products return to sender after the service has been rendered.

PROBLEMS OR QUESTIONS? CALL OUR TECHNICAL ASSISTANCE HOTLINE (314) 996-2800  
WWW.CODE3PSE.COM

Code 3, Inc., a subsidiary of  
Public Safety Equipment, Inc.

**CODE 3**<sup>®</sup>  
PUBLIC SAFETY EQUIPMENT, INC.

Code 3, Inc.  
10986 N. Watson Road  
St. Louis, Missouri 63114-2029—USA  
Ph. (314) 426-2700 Fax (314) 426-1337

Part No. T56540 Rev. 2 06/2012  
©2005 Code 3, Inc.

Code 3<sup>®</sup> is a registered trademark of Code 3, Inc., a subsidiary of Public Safety Equipment, Inc.

# INSTALLATION & OPERATION MANUAL

2011 FORD EXPLORER  
Speaker Bracket



Code 3,® Inc., a subsidiary of  
Public Safety Equipment, Inc.

**CODE 3**  
PUBLIC SAFETY EQUIPMENT, INC.

## 2011 FORD EXPLORER SPEAKER INSTALLATION

### Table of Contents:

Page No:	Description:
1.	Preparation for installation
2.	Bolt-On Easy Installation of speaker
3.	Reinstalling the vehicle fascia, Wiring connections and Installation notes
4.	Warranty Information

### Preparation for Installation:

1. Access to the rear and front of the bumper extrusion is required in order to complete hardware installation and make wiring connections.
  - Remove top engine shroud cover (2 push in fasteners & 6 hex head screws)
  - Remove Phillips head screws from both front wheel well forward areas
  - Remove hex head screws from lower fascia behind air dam area of vehicle
  - Remove (2) Phillips head screws from DS & PS fascia under front wheel well trim
  - Remove fascia & grill from vehicle & unplug fog light connectors DS & PS

**IMPORTANT:**

*Read all instructions and warnings before installing and using.*

**INSTALLER:** *This manual must be delivered to the end user of this equipment.*

NOTE: While vehicle fascia is removed, installation of grill light brackets, Par 36 LED lighthouse brackets and wiring harnesses may be easily accomplished.

### **Bolt-On Installation of Speaker Bracket on vehicle: (No Drilling Necessary)**



Fig. 1

1. Remove of the front fascia to expose the bumper area for speaker installation.

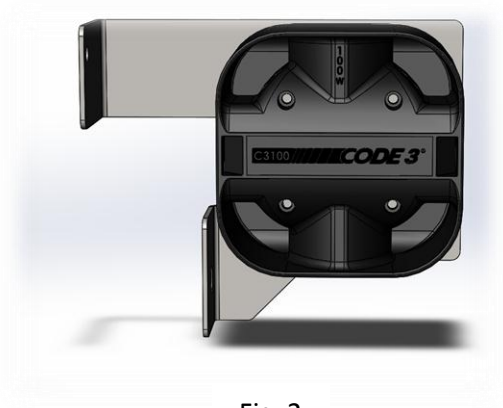


Fig. 2

2. Install speaker onto bracket using the hardware provided. Speaker should mount on the bracket as shown in fig. 2.



Fig. 3

3. Install bolts through bracket and vehicle hole locations as shown.

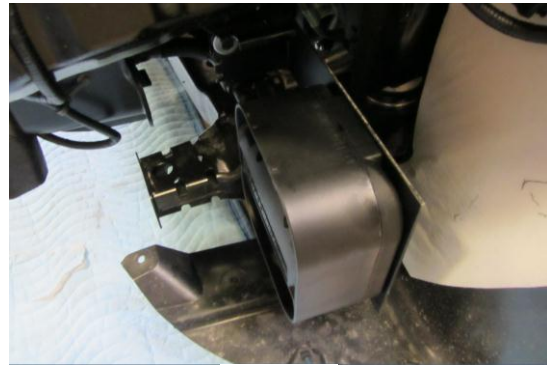


Fig. 4

4. Install flat washer, lock washer and nut onto the speaker bracket. Tighten nuts using wrench.



## Re-installation of vehicle fascia:

1. Pre-determine wiring connections for speaker to wiring harness prior to re-installation of vehicle fascia.
2. Place vehicle fascia into place and set top engine shroud over top edge of fascia.
3. Place (2) plastic push-in fasteners through top engine shroud to hold it in place.
4. Hand insert and start one hex head fastener on each end of top engine shroud and through the top leading edge of front fascia.
5. Lift the wheel well trim cover and place fascia into edges around each headlight and snap trailing edge of fascia into groove around front wheel well. The fascia will snap into place on each side of the vehicle at this point.
6. Re-install Phillips head screws into sides of front fascia and around each wheel well.
7. Re-install hex head screws along underside of fascia behind air dam of lower fascia.

## WIRING CONNECTIONS:

Extend the BLUE (Positive) and the WHITE (Negative) speaker wires to your siren amplifier and connect as shown in the amplifiers instructions and test the siren for proper operation.

## Notes:





## WARNING!

Larger wires and tight connections will provide longer service life for components. For high current wires it is highly commended that terminal blocks or soldered connections be used with shrink tubing to protect the connections. Do not use insulation displacement connectors (e.g. 3M® Scotchlock connectors). Route wiring using grommets and sealant when passing through compartment walls. Minimize the number of splices to reduce voltage drop. High ambient temperatures (e.g. under hood) will significantly reduce the current carrying capacity of wires, fuses, and circuit breakers. Use "SXL" type wire in engine compartment. All wiring should conform to the minimum wire size and other recommendations of the manufacturer and be protected from moving parts and hot surfaces. Looms, grommets, cable ties, and similar installation hardware should be used to anchor and protect all wiring. Fuses or circuit breakers should be located as close to the power takeoff points as possible and properly sized to protect the wiring and devices. Particular attention should be paid to the location and method of making electrical connections and splices to protect these points from corrosion and loss of conductivity. Ground terminations should only be made to substantial chassis components, preferably directly to the vehicle battery. The user should install a fuse sized to approximately 125% of the maximum Amp capacity in the supply line to protect against short circuits. For example, a 30 Amp fuse should carry a maximum of 24 Amps. **DO NOT USE 1/4" DIAMETER GLASS FUSES AS THEY ARE NOT SUITABLE FOR CONTINUOUS DUTY IN SIZES ABOVE 15 AMPS.** Circuit breakers are very sensitive to high temperatures and will "false trip" when mounted in hot environments or operated close to their capacity.

Wear hearing protection when testing, Use siren only for emergency response, Roll up windows when siren is operating, Avoid exposure to the siren sound outside of vehicle.

## WARRANTY

Code 3, Inc.'s emergency devices are tested and found to be operational at the time of manufacture. Provided they are installed and operated in accordance with manufacturer's recommendations, Code 3, Inc. guarantees all parts and components except the lamps to a period of 1 year (unless otherwise expressed) from the date of purchase or delivery, whichever is later. Units demonstrated to be defective within the warranty period will be repaired or replaced at the factory service center at no cost.

Use of lamp or other electrical load of wattage higher than installed or recommended by the factory, or use of inappropriate or inadequate wiring or circuit protection causes this warranty to become void. Failure or destruction of the product resulting from abuse or unusual use and/or accidents is not covered by this warranty. Code 3, Inc. shall in no way be liable for other damages including consequential, indirect or special damages whether loss is due to negligence or breach of warranty.

**CODE 3, INC. MAKES NO OTHER EXPRESS OR IMPLIED WARRANTY INCLUDING, WITHOUT LIMITATION, WARRANTIES OF FITNESS OR MERCHANTABILITY, WITH RESPECT TO THIS PRODUCT.**

## PRODUCT RETURNS

If a product must be returned for repair or replacement\*, please contact our factory to obtain a Return Goods Authorization Number (RGA number) before you ship the product to Code 3, Inc. Write the RGA number clearly on the package near the mailing label. Be sure you use sufficient packing materials to avoid damage to the product being returned while in transit.

\*Code 3, Inc. reserves the right to repair or replace at its discretion. Code 3, Inc. assumes no responsibility or liability for expenses incurred for the removal and/or reinstallation of products requiring service and/or repair; nor for the packaging, handling, and shipping; nor for the handling of products return to sender after the service has been rendered.

PROBLEMS OR QUESTIONS? CALL OUR TECHNICAL ASSISTANCE HOTLINE (314) 996-2800  
WWW.CODE3PSE.COM

Code 3, Inc., a subsidiary of  
Public Safety Equipment, Inc.

**CODE 3**  
PUBLIC SAFETY EQUIPMENT, INC.

Code 3, Inc.  
10986 N. Warson Road  
St. Louis, Missouri 63114-2029—USA  
Ph. (314) 426-2700 Fax (314) 426-1337

Part No. T57226 Rev. 0 08/2013  
©2013 Code 3, Inc.

Code 3® a registered trademark of Code 3, Inc., a subsidiary of Public Safety Equipment, Inc.

# **///CODE 3®** Installation and Operation Instructions C3100 Speaker for 2016 Ford PI Utility

**IMPORTANT!** Read all instructions before installing and using. Installer: This manual must be delivered to the end user.

## **Installation Procedure:**

1. REMOVE FRONT FASCIA FROM VEHICLE.
  - a. Care should be given to disconnect air flow sensor wire connectors behind forward section of both front wheel wells before removing fascia from vehicle mounting points. These must be reconnected when replacing fascia later.
  - b. If vehicle is built with factory supplied grill lighting option, then grill light wiring connectors must be disconnected at this time as well.



**Figure 1**

2. ASSEMBLE SPEAKER TO MOUNTING BRACKET.
  - a. Speaker is mounted to bracket using (4) Stainless Steel screws provided in speaker kit from Code 3.
3. MOUNT SPEAKER ASSEMBLY TO VEHICLE.
  - a. Speaker brackets are installed onto vehicle frame using existing OEM fasteners located on the fender-to-frame support brackets located fwd of the front wheel wells in both the driver and passenger sides of the vehicle.
  - b. Brackets are mirror images for Passenger and Driver side applications.

Two OEM fasteners used  
to mount bracket to vehicle  
frame



**Figure 2 (Passenger side shown)**

4. INSTALLATION OF OTHER ITEMS SUCH AS GRILLE BRACKETS SHOULD BE PERFORMED AT THIS TIME AS WELL.
5. REPLACE FRONT FACIA ON VEHICLE BY REPLACING CENTER FRONT TOP FASTENERS TO HOLD FACIA IN PLACE WHILE WIRE RE-CONNECTIONS ARE MADE.
6. RE-CONNECT AIR FLOW SENSORS IN BOTH FRONT WHEEL WELLS AND GRILL LIGHT CONNECTIONS IF VEHICLE IS EQUIPED WITH FACTORY PROVIDED GRILL LIGHTING.
7. REPLACE FACIA BY RE-INSTALLING HARDWARE REMOVED IN REVERSE SEQUENCE FROM REMOVAL.



COMPLETED INSTALLATION  
(prior to re-installation of fascia)

**Figure 3**

**PARTS LIST:**

If C3100PIU (Driver Side Speaker Kit) is ordered:			
ITEM NO.	PART NO.	DESCRIPTION	QTY.
1	S31364	Passenger Side Bracket	1

If C3100PIU-2 (Passenger Side Speaker Kit) is ordered:			
ITEM NO.	PART NO.	DESCRIPTION	QTY.
1	S31365	Driver Side Bracket	1

## **Manufacturer Limited Warranty Policy:**

Manufacturer warrants that on the date of purchase this product will conform to Manufacturer's specifications for this product (which are available from the Manufacturer upon request). This Limited Warranty extends for Sixty (60) months from the date of purchase.

**DAMAGE TO PARTS OR PRODUCTS RESULTING FROM TAMPERING, ACCIDENT, ABUSE, MISUSE, NEGLIGENCE, UNAPPROVED MODIFICATIONS, FIRE OR OTHER HAZARD; IMPROPER INSTALLATION OR OPERATION; OR NOT BEING MAINTAINED IN ACCORDANCE WITH THE MAINTENANCE PROCEDURES SET FORTH IN MANUFACTURER'S INSTALLATION AND OPERATING INSTRUCTIONS VOIDS THIS LIMITED WARRANTY.**

## **Exclusion of Other Warranties:**

MANUFACTURER MAKES NO OTHER WARRANTIES, EXPRESS OR IMPLIED. THE IMPLIED WARRANTIES FOR MERCHANTABILITY, QUALITY OR FITNESS FOR A PARTICULAR PURPOSE, OR ARISING FROM A COURSE OF DEALING, USAGE OR TRADE PRACTICE ARE HEREBY EXCLUDED AND SHALL NOT APPLY TO THE PRODUCT AND ARE HEREBY DISCLAIMED, EXCEPT TO THE EXTENT PROHIBITED BY APPLICABLE LAW. ORAL STATEMENTS OR REPRESENTATIONS ABOUT THE PRODUCT DO NOT CONSTITUTE WARRANTIES.

## **Remedies and Limitation of Liability:**

MANUFACTURER'S SOLE LIABILITY AND BUYER'S EXCLUSIVE REMEDY IN CONTRACT, TORT (INCLUDING NEGLIGENCE), OR UNDER ANY OTHER THEORY AGAINST MANUFACTURER REGARDING THE PRODUCT AND ITS USE SHALL BE, AT MANUFACTURER'S DISCRETION, THE REPLACEMENT OR REPAIR OF THE PRODUCT, OR THE REFUND OF THE PURCHASE PRICE PAID BY BUYER FOR NON-CONFORMING PRODUCT. IN NO EVENT SHALL MANUFACTURER'S LIABILITY ARISING OUT OF THIS LIMITED WARRANTY OR ANY OTHER CLAIM RELATED TO THE MANUFACTURER'S PRODUCTS EXCEED THE AMOUNT PAID FOR THE PRODUCT BY BUYER AT THE TIME OF THE ORIGINAL PURCHASE. IN NO EVENT SHALL MANUFACTURER BE LIABLE FOR LOST PROFITS, THE COST OF SUBSTITUTE EQUIPMENT OR LABOR, PROPERTY DAMAGE, OR OTHER SPECIAL, CONSEQUENTIAL, OR INCIDENTAL DAMAGES BASED UPON ANY CLAIM FOR BREACH OF CONTRACT, IMPROPER INSTALLATION, NEGLIGENCE, OR OTHER CLAIM, EVEN IF MANUFACTURER OR A MANUFACTURER'S REPRESENTATIVE HAS BEEN ADVISED OF THE POSSIBILITY OF SUCH DAMAGES. MANUFACTURER SHALL HAVE NO FURTHER OBLIGATION OR LIABILITY WITH RESPECT TO THE PRODUCT OR ITS SALE, OPERATION AND USE, AND MANUFACTURER NEITHER ASSUMES NOR AUTHORIZES THE ASSUMPTION OF ANY OTHER OBLIGATION OR LIABILITY IN CONNECTION WITH SUCH PRODUCT.

This Limited Warranty defines specific legal rights. You may have other legal rights which vary from jurisdiction to jurisdiction. Some jurisdictions do not allow the exclusion or limitation of incidental or consequential damages.

## **Product Returns:**

If a product must be returned for repair or replacement\*, please contact our factory to obtain a Return Goods Authorization Number (RGA number) before you ship the product to Code 3®, Inc. Write the RGA number clearly on the package near the mailing label. Be sure you use sufficient packing materials to avoid damage to the product being returned while in transit.

\*Code 3®, Inc. reserves the right to repair or replace at its discretion. Code 3®, Inc. assumes no responsibility or liability for expenses incurred for the removal and /or reinstallation of products requiring service and/or repair.; nor for the packaging, handling, and shipping; nor for the handling of products returned to sender after the service has been rendered.



10986 North Warson Road  
St. Louis, MO 63114

**Technical Service**

(314) 996-2800

c3\_tech\_support@code3esg.com

www.code3esg.com

An ECCO SAFETY GROUP™ Brand

www.eccosafetygroup.com