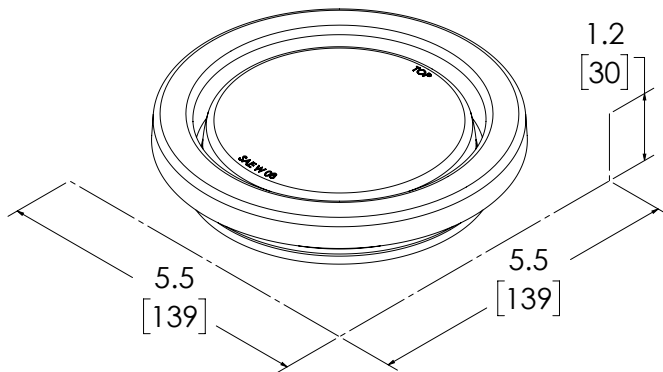


GNDLT-W GROUND LIGHTING



Improve safety at night or in low light with these flush-mount ground lights. The sealed LEDs are weather-proof and feature an automatic turn-on function (specified by user). Installing the lights underneath the chassis is a snap with a two-wire connection.



VOLTS AMPS	12-24V 0.5A
DIMS	5.4" Diameter 137mm Diameter (with grommet)
CERTS	NFPA

DETAILS	<ul style="list-style-type: none"> ▪ Flush Mount ▪ Polycarbonate clear lens ▪ Cast aluminum base ▪ Ideal for night or low light scenes ▪ Easy to install — all models are surface mounted underneath chassis in door area and wired to vehicle lighting system ▪ Automatic turn-on specified by user (for example, when parking brake is engaged) ▪ Waterproof seals ▪ Fits in standard 4.5" hole (114 mm) ▪ 7.0" (178 mm) two-wire pigtails
---------	---

MODEL	TYPE	ILLUMINATION COLORS
GNDLT-W	Flood	W