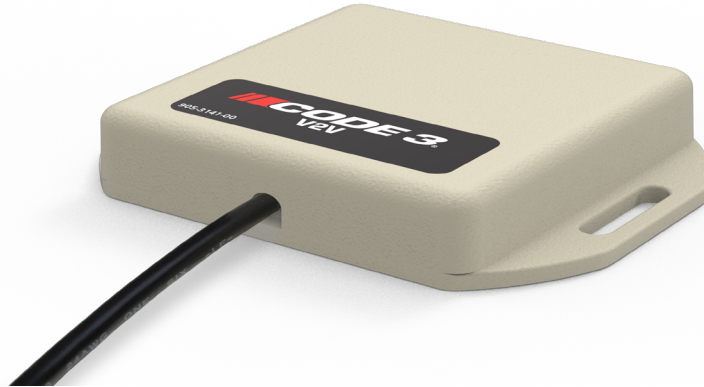
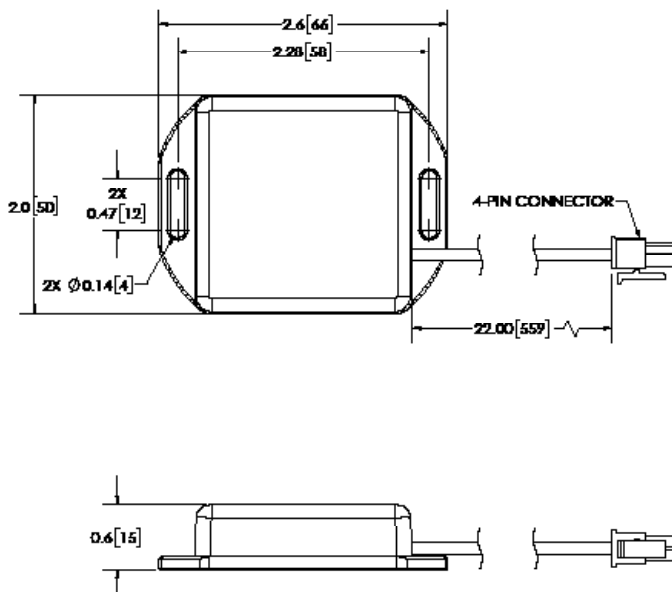


MATRIX® V2V SYNC MODULE



The Matrix® V2V synchronizes flash patterns across multiple emergency vehicles to enhance warning and create a safe environment for first responders and nearby motorists. Code 3's vehicle-to-vehicle sync module works with all Matrix Enabled police, fire and EMS vehicles using the same flash pattern configuration and synchronizes across pursuit, drive, and park modes. The unit's plug-and-play functionality minimizes installation time. Simply plug the V2V unit into a Matrix Z3 siren or SIB and mount the unit on the dash or in a window.



DIMS	2.0" H x 2.6" L x 0.6" D 50mm H x 66mm L x 15mm D
DETAILS	<ul style="list-style-type: none"> • Synchronize flash patterns across Matrix Enabled police, fire and EMS vehicles and across driving modes • VHB or screw-mounted • Increases on-scene safety for first responders and passing motorists • Powered by Matrix Z3 or SIB • Includes V2V-EXT 15' extension cable • Requires Matrix software: v3.5.0 or newer • Requires Matrix firmware: siren node v2.0, network node v2.0, LBC v1.50, and light engines v1.37 or newer

MODEL	TYPE
V2V	V2V Sync Module, Four-Pin 15' Extension



V2V-EXT
Four-Pin 15' Extension



V2V-SPLIT
Four-Pin Splitter



V2V Flash Pattern Synchronization