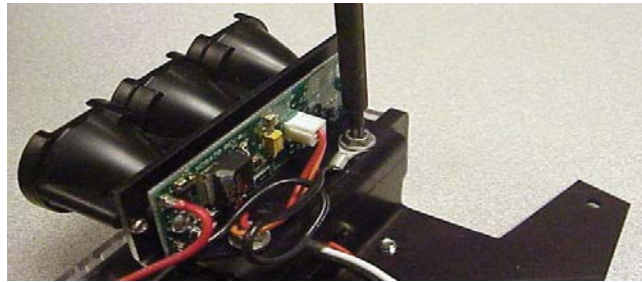


IMPORTANT! Read all instructions before installing and using. Installer: This manual must be delivered to the end user.

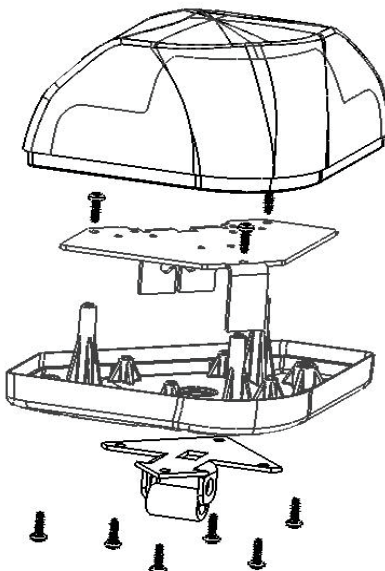
LED Head Installation:

The LED heads mount to the respective LED mounting plates with two T-20 #8x.270" screws. The grounding ring terminal will be attached to the mounting plate using one of these screws. Orient the ring terminal so that it does not extend past the LED head bracket. Using this orientation will insure that the ring terminal does not interfere with the housing. To avoid damaging components on the LED head circuit board, a straight shaft T-20 tool should be used to attach the screws.



Front Light Installation:

The Front Light Housing will be shipped partially assembled. Remove the two T-15 #6 screws that hold the lower housing to the upper lens. Remove the screws holding the LED mounting plate to the lower housing. Remove the bracket from the bottom of the lower housing. Attach the LED units as described above. If using an Indicator Light in this housing, route the wires through the slot in the LED mounting plate and press fit the indicator LEDs in the bracket. Route the wire harness up through the hole in the bottom housing and attach the connectors to the appropriate LED. Reattach the upper lens to the lower housing. Note: Never use lubricants of any kind on the screws when reassembling - it may react with the plastic housing and make it brittle. If needed, slit the foam gasket attached to the lower housing and route the wire harness cable through the slot in the mounting bracket. Reattach the mounting bracket to the lower housing. Orient the bracket so that the slot on the mounting bracket so that the opening of the slot is to the back of the light. Place the tube found in the parts bag between the "arms" on the mounting bracket. Place this assembly into the "knuckle" of the mounting bracket of the motorcycle. Tighten the socket cap screw and nut provided to clamp the light into place.



WARNING!



This Product contains high intensity LED devices. To prevent eye damage, DO NOT stare into light beam at close range.

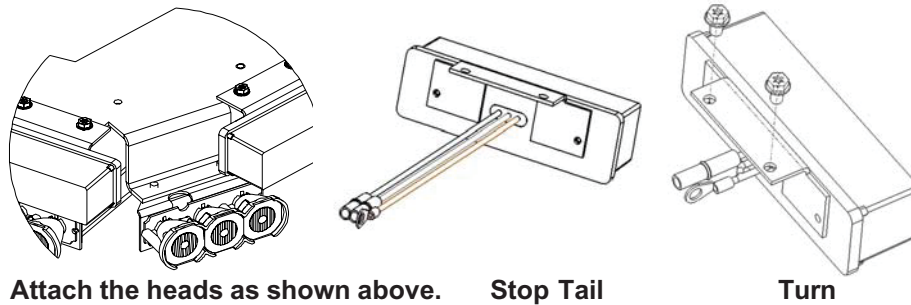
The use of this or any warning device does not insure that all drivers can or will observe or react to an emergency warning signal. Never take the right-of-way for granted. It is your responsibility to be sure you can proceed safely before entering an intersection, driving against traffic, responding at a high rate of speed, or walking on or around traffic lanes. The effectiveness of this warning device is highly dependent upon correct mounting and wiring. Read and follow the manufacturer's instructions before installing or using this device. The vehicle operator should insure daily that all features of the device operate correctly. In use, the vehicle operator should insure the projection of the warning signal is not blocked by vehicle components (i.e.: open trunks or compartment doors), people, vehicles, or other obstructions. This equipment is intended for use by authorized personnel only. It is the user's responsibility to understand and obey all laws regarding emergency warning devices. The user should check all applicable city, state and federal laws and regulations. Code 3, Inc., assumes no liability for any loss resulting from the use of this warning device. Proper installation is vital to the performance of this warning device and the safe operation of the emergency vehicle. It is important to recognize that the operator of the emergency vehicle is under psychological and physiological stress caused by the emergency situation. The warning device should be installed in such a manner as to: A) Not reduce the output performance of the system, B) Place the controls within convenient reach of the operator so that he can operate the system without losing eye contact with the roadway. Emergency warning devices often require high electrical voltages and/or currents. Properly protect and use caution around live electrical connections. Grounding or shorting of electrical connections can cause high current arcing, which can cause personal injury and/or severe vehicle damage, including fire. **PROPER INSTALLATION COMBINED WITH OPERATOR TRAINING IN THE PROPER USE OF EMERGENCY WARNING DEVICES IS ESSENTIAL TO INSURE THE SAFETY OF EMERGENCY PERSONNEL AND THE PUBLIC.**

Troubleshooting Guide

Problem	Probably Cause	Remedy
Lighthouse does not activate	a. No power to unit	a. Check wiring for loose connection
	b. Damage or shorted cabling	b. Check cables for damage
	c. Defective lighthouse	c. Replace lighthouse module
	d. Ground not secure	d. Check ground wires. Tighten if necessary

Rear Light Installation:

The Rear Light Housing will be shipped partially assembled. Remove the six T-15 #6x 3/8" screws that hold the lower lens to the upper lens. Remove the screws holding the LED mounting plate to the lower housing. Using the Lower Lens as a template, mark the location of the six rear light mounting screw holes and the hole for the cable on the radio box cover. Drill these holes to an appropriate size. The mounting screws will be standard BMW M5 Torx head screws. Attach the LED heads to the LED mounting bracket as previously described. The LED head will attach to the bottom side of the bracket and the Turn and Stop Tail will attach to the top of the bracket as shown below. Use the provided T-20 #8x.270" screws to attach the heads.

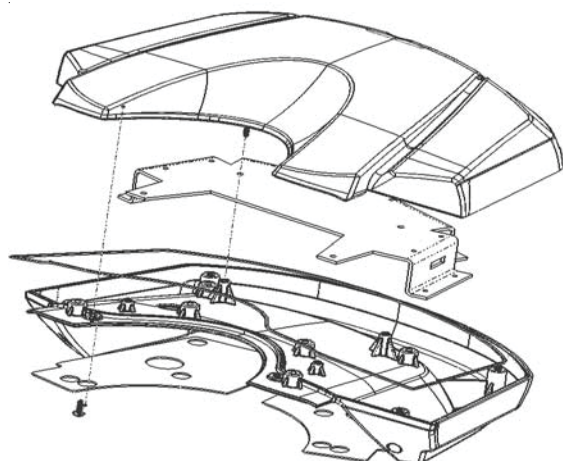


Attach the heads as shown above. Stop Tail Turn

Connect the LED heads, the Stop Tail and the Turn units to the appropriate connector on the harness. Attach the ground from the stop tail, turns and the wire harness to the LED mounting plate using the stud on the bottom of the LED mounting plate and nut provided.

Attach the completed mounting plate assembly to the lower lens. The wires from the harness and the lighthouses will interfere somewhat with easy placement of the assembly. Route the wires under the LED mounting plate to reduce the interference. Attach the LED mounting plate to the lower lens by using the T-15 #6x3/8" screw removed previously.

Reattach the upper lens to the lower lens by using the screws removed previously. Make sure the lens gasket is seated in the channel correctly and not twisted. Note: Never use lubricants of any kind on the screws when reassembling - it may react with the plastic housing and make it brittle. Place the two bottom gaskets in place on the cover of the radio box, place the Rear Light assembly onto the radio box and attach the Rear Light to the radio box using M5 screws.



Rear Light Assembly Exploded View

Manufacturer Limited Warranty Policy:

Manufacturer warrants that on the date of purchase this product will conform to Manufacturer's specifications for this product (which are available from the Manufacturer upon request). This Limited Warranty extends for Sixty (60) months from the date of purchase.

DAMAGE TO PARTS OR PRODUCTS RESULTING FROM TAMPERING, ACCIDENT, ABUSE, MISUSE, NEGLIGENCE, UNAPPROVED MODIFICATIONS, FIRE OR OTHER HAZARD; IMPROPER INSTALLATION OR OPERATION; OR NOT BEING MAINTAINED IN ACCORDANCE WITH THE MAINTENANCE PROCEDURES SET FORTH IN MANUFACTURER'S INSTALLATION AND OPERATING INSTRUCTIONS Voids THIS LIMITED WARRANTY.

Exclusion of Other Warranties:

MANUFACTURER MAKES NO OTHER WARRANTIES, EXPRESS OR IMPLIED. THE IMPLIED WARRANTIES FOR MERCHANTABILITY, QUALITY OR FITNESS FOR A PARTICULAR PURPOSE, OR ARISING FROM A COURSE OF DEALING, USAGE OR TRADE PRACTICE ARE HEREBY EXCLUDED AND SHALL NOT APPLY TO THE PRODUCT AND ARE HEREBY DISCLAIMED, EXCEPT TO THE EXTENT PROHIBITED BY APPLICABLE LAW. ORAL STATEMENTS OR REPRESENTATIONS ABOUT THE PRODUCT DO NOT CONSTITUTE WARRANTIES.

Remedies and Limitation of Liability:

MANUFACTURER'S SOLE LIABILITY AND BUYER'S EXCLUSIVE REMEDY IN CONTRACT, TORT (INCLUDING NEGLIGENCE), OR UNDER ANY OTHER THEORY AGAINST MANUFACTURER REGARDING THE PRODUCT AND ITS USE SHALL BE, AT MANUFACTURER'S DISCRETION, THE REPLACEMENT OR REPAIR OF THE PRODUCT, OR THE REFUND OF THE PURCHASE PRICE PAID BY BUYER FOR NON-CONFORMING PRODUCT. IN NO EVENT SHALL MANUFACTURER'S LIABILITY ARISING OUT OF THIS LIMITED WARRANTY OR ANY OTHER CLAIM RELATED TO THE MANUFACTURER'S PRODUCTS EXCEED THE AMOUNT PAID FOR THE PRODUCT BY BUYER AT THE TIME OF THE ORIGINAL PURCHASE. IN NO EVENT SHALL MANUFACTURER BE LIABLE FOR LOST PROFITS, THE COST OF SUBSTITUTE EQUIPMENT OR LABOR, PROPERTY DAMAGE, OR OTHER SPECIAL, CONSEQUENTIAL, OR INCIDENTAL DAMAGES BASED UPON ANY CLAIM FOR BREACH OF CONTRACT, IMPROPER INSTALLATION, NEGLIGENCE, OR OTHER CLAIM, EVEN IF MANUFACTURER OR A MANUFACTURER'S REPRESENTATIVE HAS BEEN ADVISED OF THE POSSIBILITY OF SUCH DAMAGES. MANUFACTURER SHALL HAVE NO FURTHER OBLIGATION OR LIABILITY WITH RESPECT TO THE PRODUCT OR ITS SALE, OPERATION AND USE, AND MANUFACTURER NEITHER ASSUMES NOR AUTHORIZES THE ASSUMPTION OF ANY OTHER OBLIGATION OR LIABILITY IN CONNECTION WITH SUCH PRODUCT.

This Limited Warranty defines specific legal rights. You may have other legal rights which vary from jurisdiction to jurisdiction. Some jurisdictions do not allow the exclusion or limitation of incidental or consequential damages.

Product Returns:

If a product must be returned for repair or replacement*, please contact our factory to obtain a Return Goods Authorization Number (RGA number) before you ship the product to Code 3®, Inc. Write the RGA number clearly on the package near the mailing label. Be sure you use sufficient packing materials to avoid damage to the product being returned while in transit.

*Code 3®, Inc. reserves the right to repair or replace at its discretion. Code 3®, Inc. assumes no responsibility or liability for expenses incurred for the removal and /or reinstallation of products requiring service and/or repair.; nor for the packaging, handling, and shipping; nor for the handling of products returned to sender after the service has been rendered.



10986 North Warson Road
St. Louis, MO 63114

Technical Service

(314) 996-2800

c3_tech_support@code3esg.com

www.code3esg.com

An ECCO SAFETY GROUP™ Brand

www.eccosafetygroup.com