

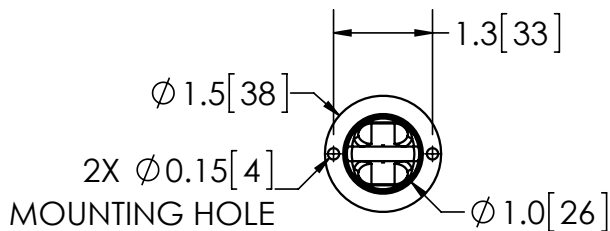
## WILDCAT™ HIDE-A-BLAST™ SERIES

### CONCEALED WARNING

W6R



The Wildcat™ Hide-A-Blast™ is designed to be installed in head and taillights where space is limited, requiring just a one-in. hole. Features include four intense LEDs, 16 flash patterns, low-profile mounting flange, nickel-plated housing, self-contained power module and a nine-ft. cable is included.



VOLTS   AMPS	12-24V   0.5A
DIMS	1.5" W x 0.9" Diameter   38mm H x 22mm Diameter
MOUNTING HOLE SPACING	1.3"   33mm
FLASH PATTERNS	16
CERTS	CE, R10
DETAILS	<ul style="list-style-type: none"> <li>• In-line power module</li> <li>• 9' (2.7m) pre-wired cable</li> <li>• Nickel plated housing</li> <li>• Two head models: Red/blue head combination available</li> <li>• Pre-wired cable; 7' (2.1m) module, 7' (2.1m) head A, 4' (1.2m) head B</li> <li>• Single and double head models have same specs, except double head models come in pairs and share a power module</li> </ul>

REPLACE " \_ " with A = Amber, B = Blue, R = Red, W = White

MODEL	TYPE	ILLUMINATION COLORS
W6_	4 LED, 1 head, 1" hole	A, B, R, W
W6_ _	4 LED, 1 head, 1" hole	AB, AW, BR, BW, RW

