

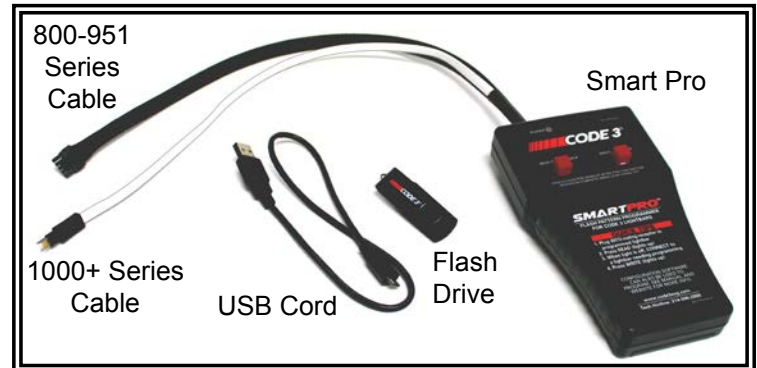


## Operation Instructions

### SmartPro™ Configuration Interface

#### Introduction:

The SmartPro Configuration Interface is a handheld flash pattern programming device for use with Code 3 Lightbars and Microsoft PC based systems.



#### Contents:

Software Installation.....	01
Configuration.....	02
Set-Up Configuration.....	02
Saving a Configuration File.....	02
Loading a Configuration File.....	02
Writing Configuration to the Handheld Unit.....	02
Reading Configuration to the Handheld Unit.....	02
Programming.....	03
Programming a Lightbar.....	03
Reading a Lightbar.....	03
Troubleshooting.....	03
Glossary.....	04
Notes.....	05
Warranty.....	06

**IMPORTANT!** Read all instructions before installing and using. Installer: This manual must be delivered to the end user.

#### **Smart Pro Software Installation**

Install on Windows version 7, or higher.

1. Insert flash drive into the computer's USB port.
2. After locating the flash drive on your computer screen, click on the SmartPro\_Configuration\_Interface-x.x.x.x (latest version) executable (.exe) file.
3. After the program opens, follow the prompts on the screen to complete the installation.

## **Configuration**

### **Set-Up Configuration**

1. Select the lightbar series you wish to program.  
**Older Model Lightbars**
  - a. 800 - RX2700CC and Defender.
  - b. 950 - RX2700CC Multi-Color and Defender TriCore 2.0.
  - c. 951 - 21TR Multi-Color and Solex Multi-Color.**New CC Boards**
  - d. 1000 - All single color lightbars.
  - e. 1050 - RX2700CC Multi-Color & Defender TriCore 2.0.
  - f. 1051 - 21TR Multi-Color and Solex Multi-Color.
2. In the *Pattern Selection* tab, set up L1; L2; L3; L1 & L2; L1 & L3; L2 & L3; and L1, L2, & L3 for synchronized and unsynchronized. This option is only available if you are programming a 1000/1050/1051 series. This option is located in the top left corner under Synchronized.
3. In the *Pattern Selection* tab, set up the L1, L2, L3, L1 & L2, L1 & L3, L2 & L3, and L1 L2 & L3, patterns you wish to use. For synchronized, there is only Front Rate, Front Sequence, Rear Rare and Rear Sequence patterns to set up. To choose the default patterns select the "Reset to Default" button in the upper left corner. The Reset to Default button will reset the drop down fields to the default settings.
4. In the *Takedown/Alley* tab, set up the patterns you wish to use.
5. For the *ArrowStik* tab, set up the ArrowStik configuration.
6. If you are programming a 1000/1050/1051 series, *Arrow Emergency* can be enabled. This is located in the top left corner under *Arrow Emergency*.

### **Saving Configuration to a File**

1. To save the configuration, go to menu tab File -> Save Configuration
2. Key in a file name. (Tip: Name file by Dept. Name, Unit Number, or Lightbar, etc.)
3. Click on save. (The resulting file will have the extension .c3c)

### **Loading Configuration File**

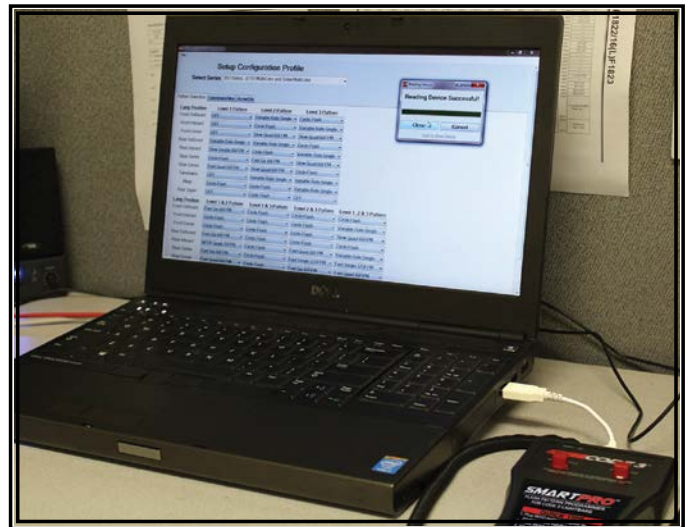
1. Loading a previously saved configuration file can be done in two ways:
  - a. Double click the .c3c file (also shows the C3 logo) you wish to load and the SmartPro application will launch with that configuration loaded.
  - b. To manually load a file, go to menu tab File -> Load Configuration and select the file you wish to load.

### **Writing a Configuration to the SmartPro Handheld Unit from the PC**

1. To write a configuration to the handheld unit, connect the USB-A end of the micro USB cable into the computer and the smaller end into the handheld unit.
2. On the PC screen, go to File -> Write Device.
3. A pop up status box should come up showing "Write Device Success". If "Write Device Failed" appears, return to Step #1.
4. Once the configuration is loaded to the SmartPro, close the pop up box. Then follow the "Programming a Lightbar" steps on Page 3.

### **Reading a Configuration from the SmartPro Handheld Unit and Transferring it to the PC**

1. To read a configuration from the handheld unit, plug the USB-A end of the micro USB cable into the computer and the smaller end into the handheld unit.
2. Have the SmartPro software file open on your PC.
3. Go to File -> Read Device.
4. A pop up status box should come up showing "Reading Device Success". If "Reading Device Failed" appears, return to Step #1.
5. Once "Reading Device Success" is completed close the pop up box.
6. The configuration is loaded on your PC screen. This allows you to save the configuration to a file on your PC, or update any flash modification, etc.



## **Programming**

4 - AAA batteries (not included) must be inserted into the SmartPro prior to programming.

### **Programming a Lightbar**

1. To program a lightbar, load a configuration into the handheld unit. (See page 2 for review - Writing a Configuration to the Smart Pro)
2. Next, plug the correct programming cable into the lightbar. (The 1000/1050/1051 series uses the white cable)
3. Press and hold the *Write To Device* button on the SmartPro for approximately 1 second, then release. *Write to Device* button and power indicator light should stay on.
4. The operation should take 4-5 seconds.
5. Once the power indicator light and *Write to Device* button have turned off, it is safe to unplug the cable.

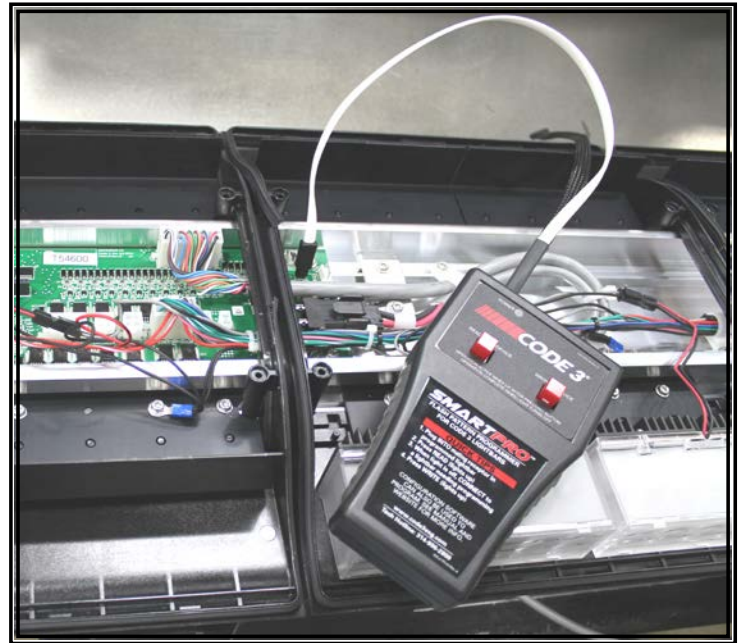
### **Reading a Lightbar**

1. Plug the correct programming cable into the lightbar central controller. (The 1000/1050/1051 series uses the white cable)
2. Press and hold the *Read To Device* button on the SmartPro for approx. 1 second then release. *Read to Device* button and power indicator light should stay on.
3. Once the power indicator light and the *Read to Device* button have turned off, it is safe to unplug the cable.

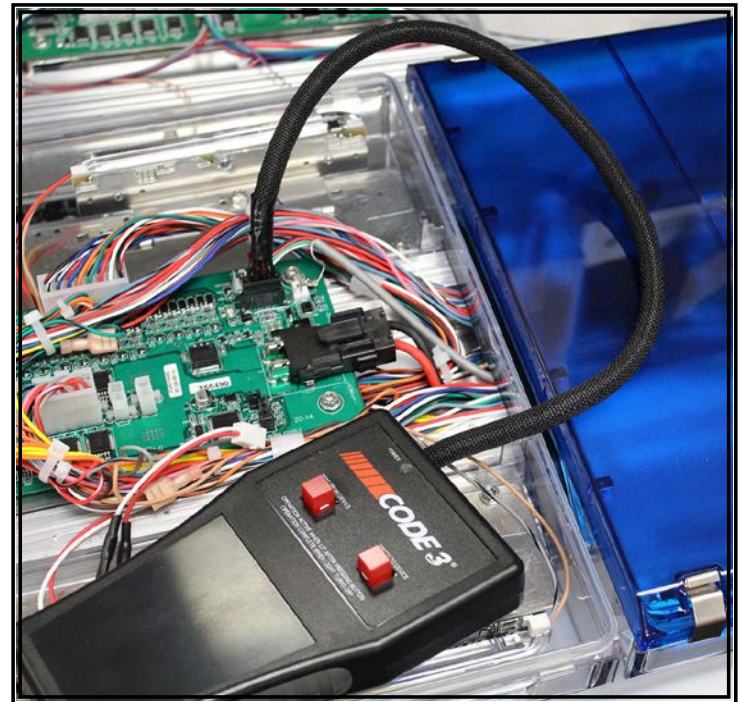
## **Troubleshooting**

1. *Select Series* drop down menu options do not appear on my screen.
  - a. The monitor is too small to show all options. Expand the window to full screen or use the scroll bar on right side of screen to see full options.
2. Programming a (i.e. Fast Quad) pattern to my single color lightbar yields no flashing.
  - a. Under the *Pattern Selection* tab, check the drop down Level menus for chosen pattern.
  - b. Was a Primary Only pattern section selected under the drop down menu?
  - c. Scroll to see which section of the drop down is selected. Make sure a Primary Only pattern is selected.
3. My lightbar doesn't flash correctly after programming.
  - a. Check that the *Select Series* drop down at the top has the correct series chosen.
  - b. If not, click the drop down to the right and select the proper series bar.
  - c. Reselect flashes for the various Lamp Position and Level Positions.
4. Nothing changed in my Smart Pro configuration interface after reading a lightbar.
  - a. Make sure the connection from SmartPro handheld device is firmly connected to lightbar before pressing the *Read to Device* button.
  - b. Make sure USB is not connected to the computer when Smart Pro is reading from lightbar. Make sure there is no connection to lightbar when USB is connected to the computer and computer is reading the SmartPro.
  - c. Make sure USB is firmly connected when computer is reading from device
  - d. Make sure lights on pushbuttons are lighting when pressed. (replace batteries if not)
  - e. If still nothing changes, try rebooting your computer.

1000/1050/1051



800/950/951



## **Glossary**

**ArrowStik® Emergency:** Only available in 1050 and 1051 series lightbars with Multi-Color rear light heads. This function will flash the primary color lamps of the ArrowStik® modules in an alternating double flash sequence. When the LEFT, RIGHT or CENTER-OUT function is activated the ArrowStik® sequence will cycle four times, then the primary color lamps will alternate twice.

**“Reset to Default” Box:** This will load the default lightbar flash configuration.

**Load Configuration:** SmartPro Configuration Interface will open any previously saved configuration into current program.

**Null:** Light heads that are programed for Null pattern will not light up.

**Pattern:** A repeated sequence and flash rate combination.

**Primary Only:** For multi-color light heads there are primary color lamps and secondary color lamps. For single color light heads there are only primary color lamps. *Primary Only* patterns will only light up the primary color lamps for both multi-color light heads and single color light heads

**Progressive Switch:** will use the Level-1 (L1), Level-2 (L1 + L2) and Level-3 (L1 + L2 + L3) modes.

**Rate:** How fast the programmed light heads flash.

**Read Device:** SmartPro Configuration Interface reads configurations from the SmartPro handheld device into the PC.

**Read from Device:** SmartPro handheld device reads configurations from the lightbar into the SmartPro.

**Save Configuration:** SmartPro Configuration Interface saves any changes you made to any of the drop down pattern options.

**Secondary Only:** For multi-color light heads there are primary color lamps and secondary color lamps. For single color light heads there are only primary color lamps. *Secondary Only* patterns will only light up the secondary color lamps for multicolor light heads. Any single color light heads will not light up.

**Sequence:** repeated light heads flashing pattern.

**Standard Flash Patterns:** For multi-color light heads there are primary color lamps and secondary color lamps. For single color light heads there are only primary color lamps. *Standard Flash Patterns* will light up both the primary and secondary color lamps. Any single color light heads will not light up when secondary lights are suppose to flash.

**Synchronized:** All light heads that are *Synchronized* together flash the same at the same time.

**Unsynchronized:** All light heads flash at different times.

**Write Device:** SmartPro Configuration Interface writes configurations from the PC into the SmartPro handheld device.

**Write to Device:** SmartPro handheld device writes configurations from the SmartPro into the lightbar.

**Notes:**

### **Manufacturer Limited Warranty Policy:**

Manufacturer warrants that on the date of purchase this product will conform to Manufacturer's specifications for this product (which are available from the Manufacturer upon request). This Limited Warranty extends for Sixty (60) months from the date of purchase.

**DAMAGE TO PARTS OR PRODUCTS RESULTING FROM TAMPERING, ACCIDENT, ABUSE, MISUSE, NEGLIGENCE, UNAPPROVED MODIFICATIONS, FIRE OR OTHER HAZARD; IMPROPER INSTALLATION OR OPERATION; OR NOT BEING MAINTAINED IN ACCORDANCE WITH THE MAINTENANCE PROCEDURES SET FORTH IN MANUFACTURER'S INSTALLATION AND OPERATING INSTRUCTIONS VOIDS THIS LIMITED WARRANTY.**

### **Exclusion of Other Warranties:**

MANUFACTURER MAKES NO OTHER WARRANTIES, EXPRESS OR IMPLIED. THE IMPLIED WARRANTIES FOR MERCHANTABILITY, QUALITY OR FITNESS FOR A PARTICULAR PURPOSE, OR ARISING FROM A COURSE OF DEALING, USAGE OR TRADE PRACTICE ARE HEREBY EXCLUDED AND SHALL NOT APPLY TO THE PRODUCT AND ARE HEREBY DISCLAIMED, EXCEPT TO THE EXTENT PROHIBITED BY APPLICABLE LAW. ORAL STATEMENTS OR REPRESENTATIONS ABOUT THE PRODUCT DO NOT CONSTITUTE WARRANTIES.

### **Remedies and Limitation of Liability:**

MANUFACTURER'S SOLE LIABILITY AND BUYER'S EXCLUSIVE REMEDY IN CONTRACT, TORT (INCLUDING NEGLIGENCE), OR UNDER ANY OTHER THEORY AGAINST MANUFACTURER REGARDING THE PRODUCT AND ITS USE SHALL BE, AT MANUFACTURER'S DISCRETION, THE REPLACEMENT OR REPAIR OF THE PRODUCT, OR THE REFUND OF THE PURCHASE PRICE PAID BY BUYER FOR NON-CONFORMING PRODUCT. IN NO EVENT SHALL MANUFACTURER'S LIABILITY ARISING OUT OF THIS LIMITED WARRANTY OR ANY OTHER CLAIM RELATED TO THE MANUFACTURER'S PRODUCTS EXCEED THE AMOUNT PAID FOR THE PRODUCT BY BUYER AT THE TIME OF THE ORIGINAL PURCHASE. IN NO EVENT SHALL MANUFACTURER BE LIABLE FOR LOST PROFITS, THE COST OF SUBSTITUTE EQUIPMENT OR LABOR, PROPERTY DAMAGE, OR OTHER SPECIAL, CONSEQUENTIAL, OR INCIDENTAL DAMAGES BASED UPON ANY CLAIM FOR BREACH OF CONTRACT, IMPROPER INSTALLATION, NEGLIGENCE, OR OTHER CLAIM, EVEN IF MANUFACTURER OR A MANUFACTURER'S REPRESENTATIVE HAS BEEN ADVISED OF THE POSSIBILITY OF SUCH DAMAGES. MANUFACTURER SHALL HAVE NO FURTHER OBLIGATION OR LIABILITY WITH RESPECT TO THE PRODUCT OR ITS SALE, OPERATION AND USE, AND MANUFACTURER NEITHER ASSUMES NOR AUTHORIZES THE ASSUMPTION OF ANY OTHER OBLIGATION OR LIABILITY IN CONNECTION WITH SUCH PRODUCT.

This Limited Warranty defines specific legal rights. You may have other legal rights which vary from jurisdiction to jurisdiction. Some jurisdictions do not allow the exclusion or limitation of incidental or consequential damages.



10986 North Warson Road  
St. Louis, MO 63114

Technical Service:  
(314) 996-2800

c3\_tech\_support@code3esg.com  
www.code3esg.com

A Division of ESG | [www.eccogroup.com](http://www.eccogroup.com)