

SWITCH NODE / OBD / SIB / SPLITTER - MATRIX® ENABLED

TAKING CHARGE OF EMERGENCY WARNING

Working with the Z3 Siren, these Matrix components efficiently manage and sync the emergency warning devices installed on and throughout the unit.

SWITCH NODE

MORE OUTPUT CONTROL



VOLTS AMPS	12-24V 60A
DIMS	1.2" H x 6.0" L x 2.5" D 30mm H x 152mm L x 63mm D
CERTS	IP69K, R10
DETAILS	<ul style="list-style-type: none"> • Designed for extreme temperature environments • Indicator lights for every output • Outputs can be combined to handle higher power devices • Dimmable outputs • Easy install - two-wire connection to Z3 or SIB

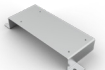
MODEL	TYPE
SWITCHNODE	16 Outputs, 5A Per Output



SNMTG-TH21

MOUNTING BRACKET

2021+ Tahoe



SNMTG-PIU20

MOUNTING BRACKET

2020+ PIU

SERIAL INTERFACE BOX (SIB)

PROVIDES MATRIX DEVICE CONNECTIVITY TO LEGACY SIRENS, OE SWITCHING



VOLTS	10-32V
DIMS	3.7" H x 4.0" L x 1" D 94mm H x 107mm L x 25mm D
DETAILS	<ul style="list-style-type: none"> • Central node in the Matrix environment • USB interface for PC connectivity • Internal, resettable PTC fuse

MODEL	TYPE
CZMATSIB	23 Configurable Inputs, 2 CAT5 Ports

ON BOARD DIAGNOSTICS (OBD)

REACTS AUTOMATICALLY TO VEHICLE SIGNALS



VOLTS	12V
DIMS	0.7" H x 2.7" L x 1.7" D 18mm H x 69mm L x 43mm D
DETAILS	<ul style="list-style-type: none"> • React automatically to vehicle signals • Removes need to splice or cut into the vehicle's OEM wires • Provides seamless cable connectivity to Vehicle CAN Bus system to interface vehicle signals to Matrix siren system

MODEL	TYPE
Z3S-OBD-DURCH	2015+ Durango, Charger
Z3S-OBD-TH	2015-2020 Tahoe
Z3S-OBD-TH21	2021+ Tahoe, Silverado 1500
Z3S-OBD-001	2021+ F-150-350, 2024+ Mustang GT, 2016+ PIU/Explorer/Expedition, 2023+ Ranger

SPLITTER

ENABLES 3+ MATRIX END NODES IN A SYSTEM



VOLTS	10-32V
DIMS	1.0" H x 4.2" L x 2.1" D 25mm H x 107mm L x 53mm D
DETAILS	<ul style="list-style-type: none"> • Expand the total number of supported Matrix end nodes in a system (Citadel™, Thin SuperVisor™, Thin WingMan™, Lightbars)

MODEL	TYPE
MATRIX SPLITTER	2 CAT5 Input Ports, 4 CAT5 Output Ports