

Urban Outfitters

Garment Measuring Guide

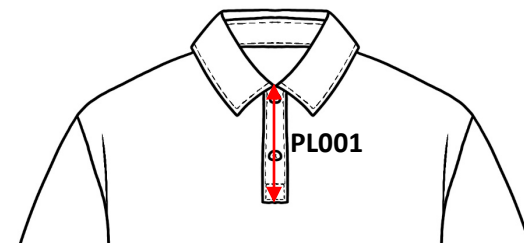
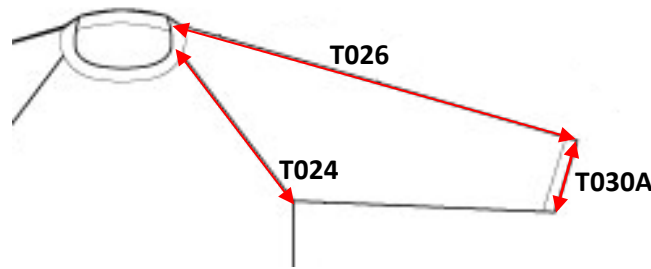
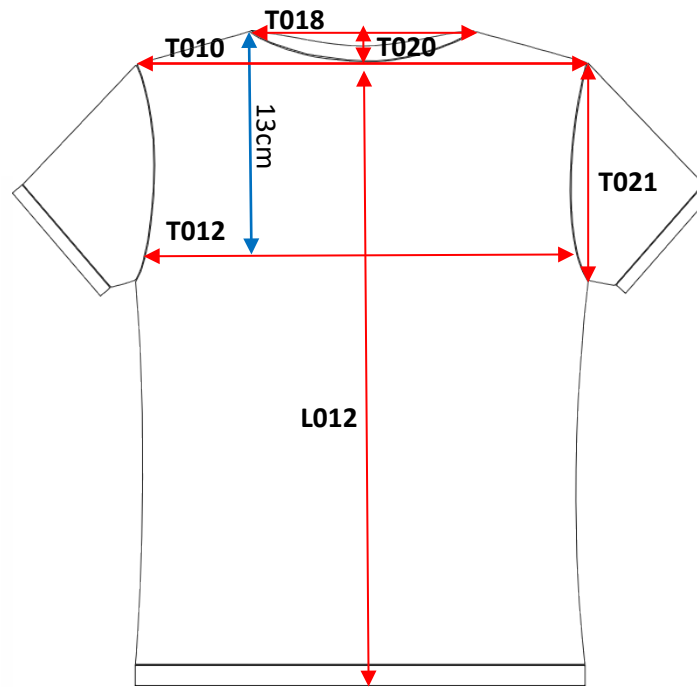
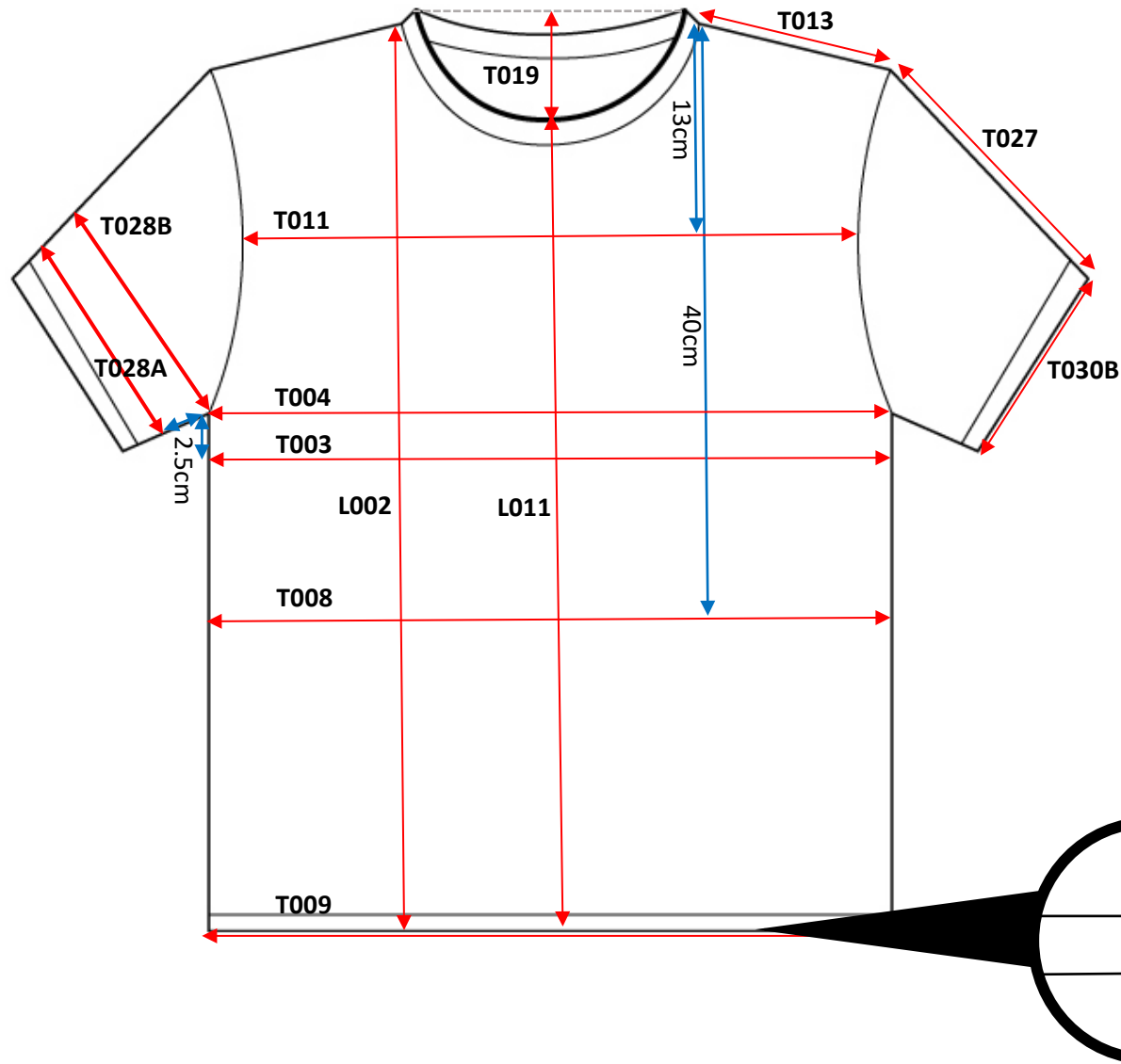
By Neharika Nayyar
April 2025

Version 2, 2025

Content

Page	Style	POM Focus
3	T-shirt	Core body POMs
4-5	Shirt	Including Placket, Collar, Yoke and Shirt pockets
6	Cami	Including Cup, strap, underbust, apex to apex POMs
7	Dress	Including Bandeaux, updated bust measurement method for wovens
8	Jumpsuit	Including Rompers (reference for Skorts)
9	Skirt	Including Vent length and Pocket Bags
10	Trousers	Core bottom POMs
11	Shorts	Including elasticated waist POMs and Swim shorts for MW
12-13	Jacket	Including Lapel collar, Kangaroo Pockets and Hood POMs
14	Bra	Core POMs
15	Bikini Top	Core POMs
16	Brief	Core POMs

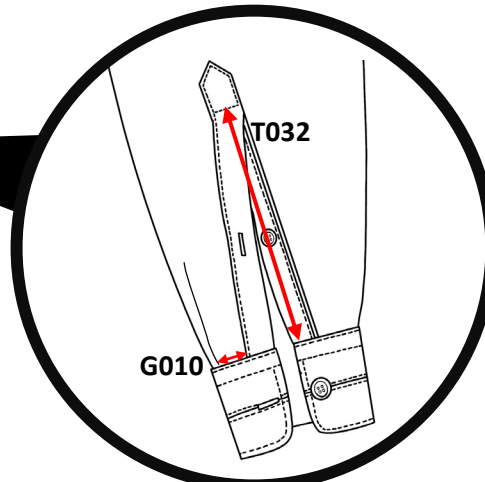
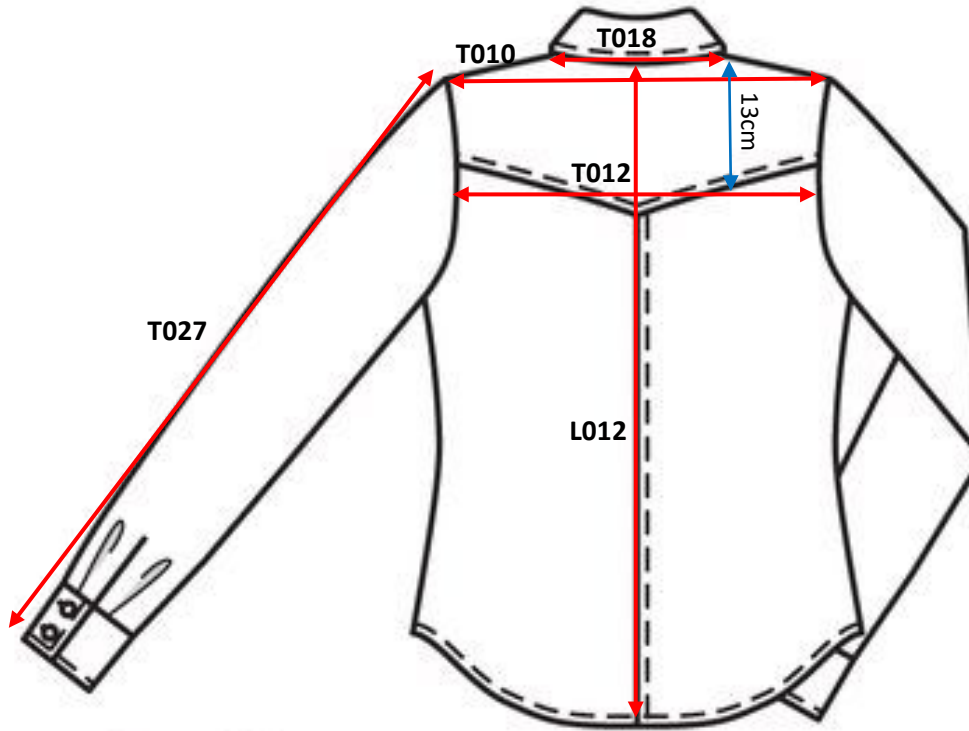
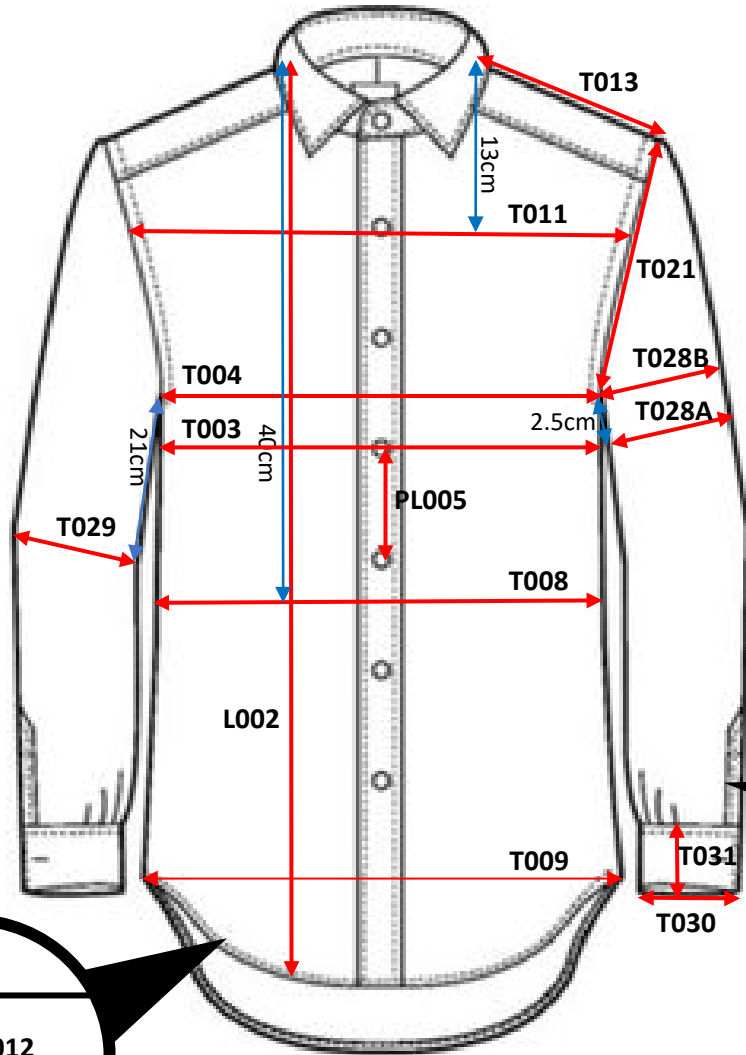
T-shirt



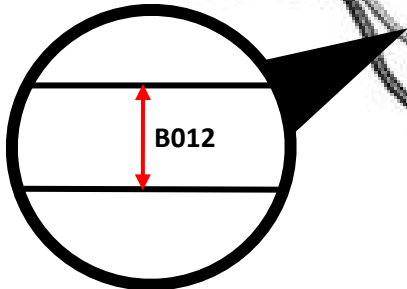
KEY TO MEASURES:

- L002. SNP to Hem
- L011. CF Length to Hem
- L012. CB Length to Hem
- T003. Bust @ 2.5cm below U/A
- T004. Chest at Armhole (For MW only)
- T008. Waist width @ 40cm from SNP
- T009. Hem width straight/ curved
- T010. X shoulder
- T011. X front @ 13cm from SNP
- T012. X back @ 13cm from SNP
- T013. Shoulder seam length
- T018. Back neck width straight – seam to seam
- T019. Front neck drop
- T020. Back neck drop
- T021. Armhole straight
- T024. Front raglan straight
- T026. Overarm length – SNP to cuff
- T027. Overarm length – shoulder point to cuff
- T028A. Bicep 2.5 cm below U/A
- T028B. Bicep at armhole (For MW only)
- T030A. Cuff opening – long sleeve
- T030B. Cuff opening – short sleeve
- B012. Hem depth
- PL001. CF Placket 1/4

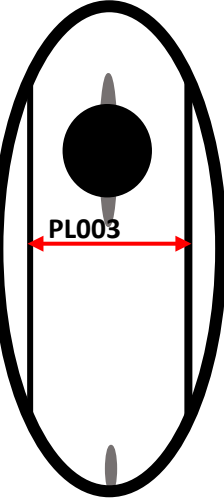
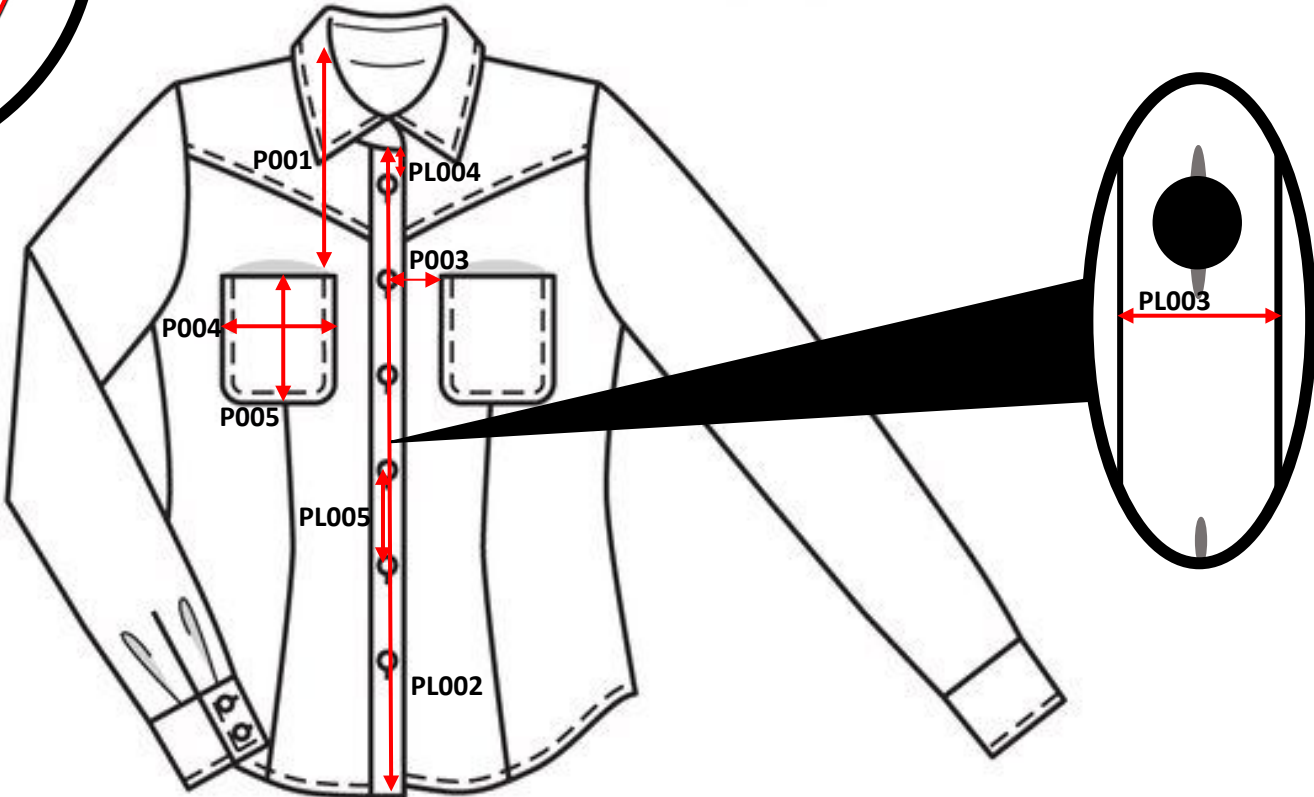
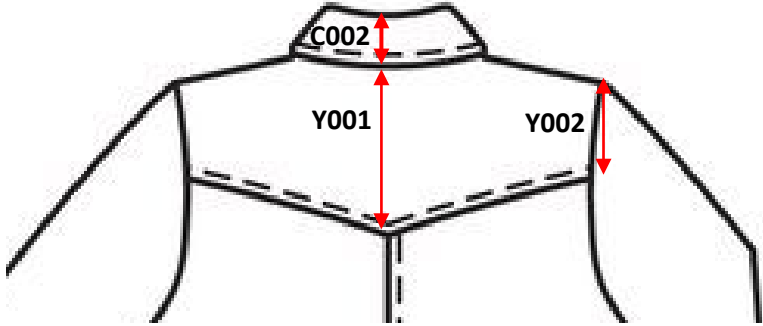
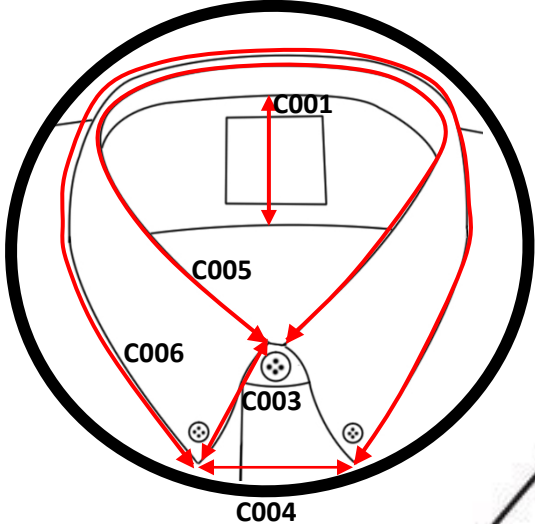
Shirt



- KEY TO MEASURES:
- L002. SNP to Hem
 - L012. CB length to hem
 - T003. Bust @ 2.5cm below U/A (see page 7)
 - T004. Chest @ armhole (For MW only)
 - T008. Waist width @ 40cm from SNP
 - T009. Hem straight/ curved
 - T010. X shoulder
 - T011. X front @ 13cm from SNP
 - T012. X back @ 13cm from SNP
 - T013. Shoulder Seam length
 - T018. Back neck width straight – seam to seam
 - T021. Armhole straight
 - T027. Overarm length – shoulder point to cuff
 - T028A. Bicep 2.5 cm below U/A
 - T028B. Bicep at armhole (For MW only)
 - T029. Elbow @ 21cm from U/A
 - T030. Cuff opening
 - T031. Cuff depth
 - T032. Cuff vent length
 - B012. Hem depth
 - G010. Pleat depth

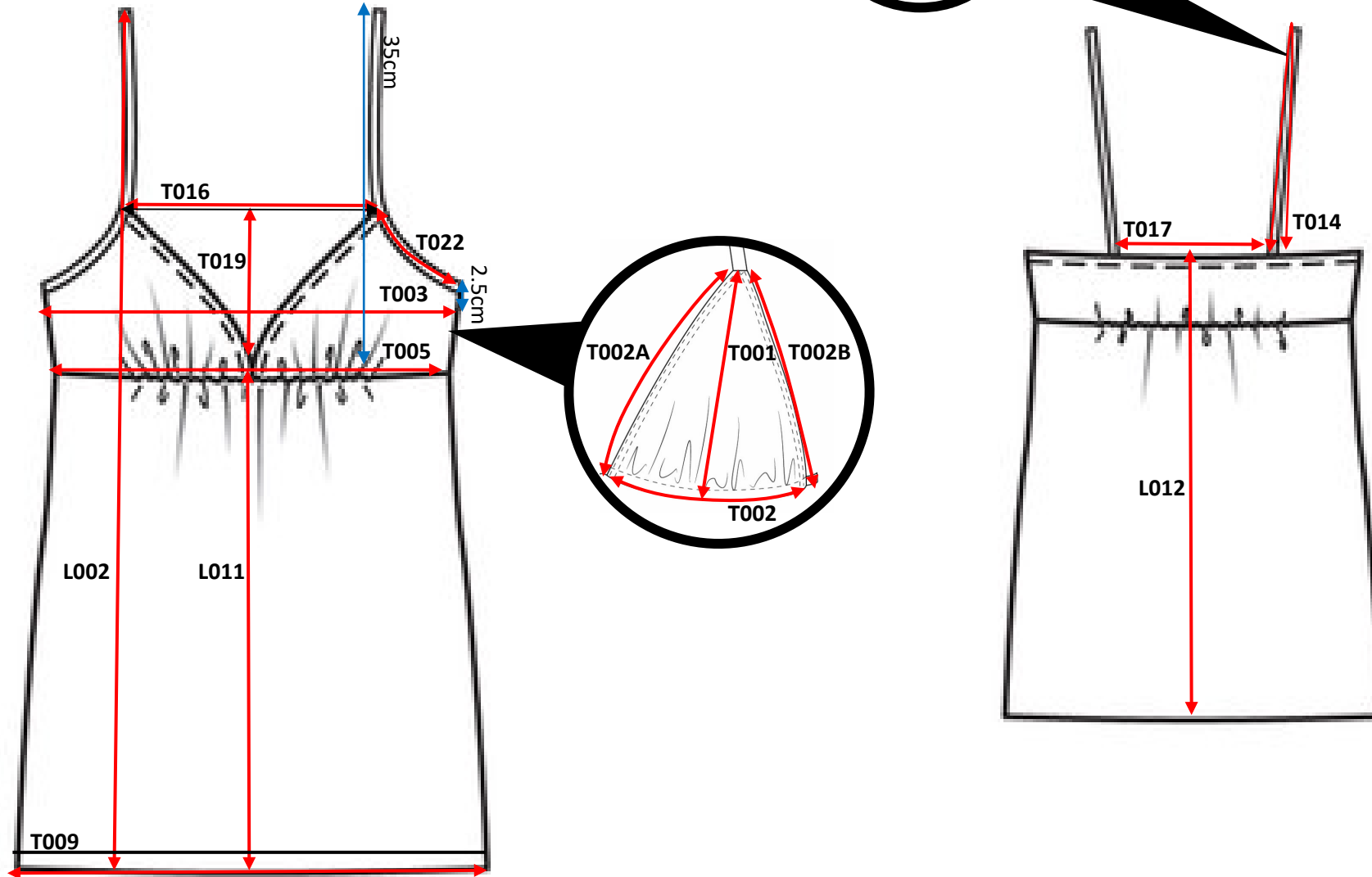


Shirt Cont..



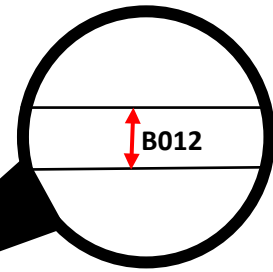
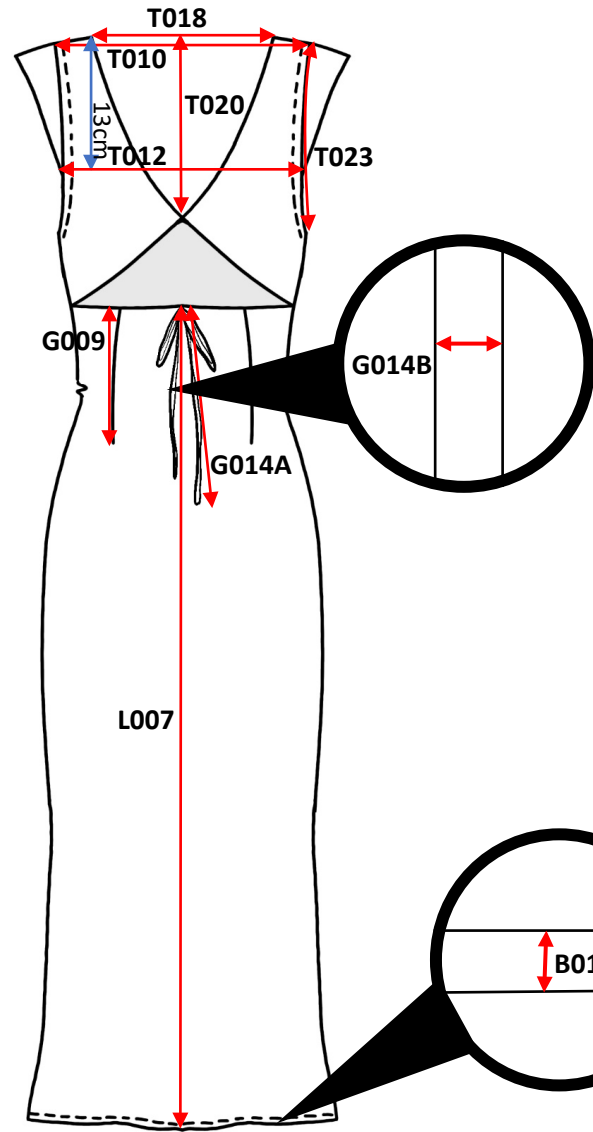
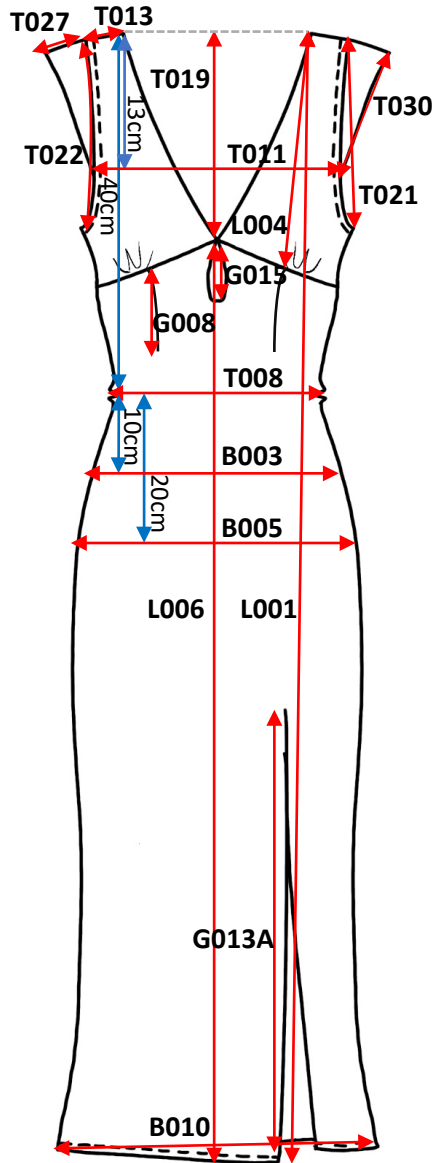
- KEY TO MEASURES:**
- Y001. Shoulder Yoke length @ CB
 - Y002. Shoulder Yoke depth @ armhole
 - PL002. CF placket length
 - PL003. CF placket width
 - PL004. 1st button position from CF neck seam
 - PL005. Button spacing
 - C001. Collar stand depth @CB
 - C002. Collar depth @ CB
 - C003. Collar point length
 - C004. Collar Spread
 - C005. Collar circ @ Neck edge
 - C006. Collar circ @ leaf edge
 - P001. Pocket position from SNP
 - P003. Pocket Position from CF
 - P004. Pocket width
 - P005. Pocket depth

Cami

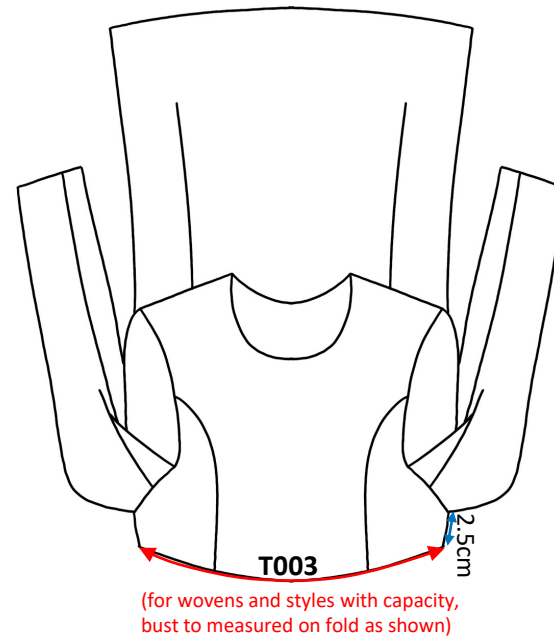
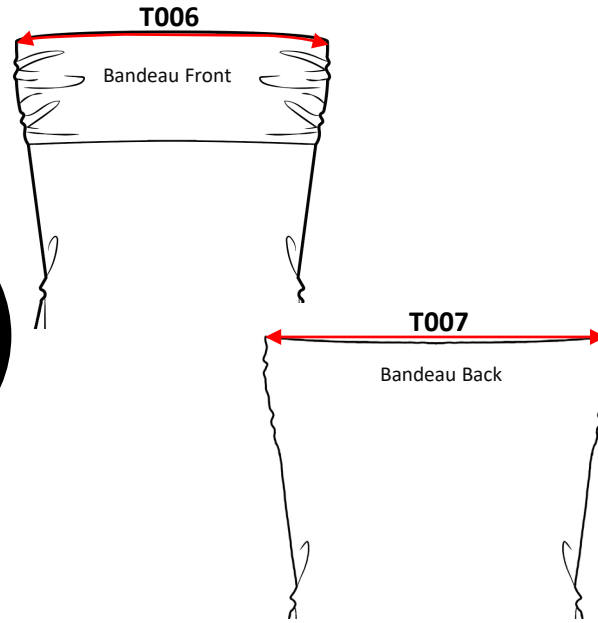


- KEY TO MEASURES:**
- L002. SNP to Hem
 - L011. CF length to hem
 - L012. CB length to hem
 - T001. Cup Depth
 - T002. Bottom cup width
 - T002A. Neckline length (for triangle cup styles)
 - T002B. Armhole length (for triangle cup styles)
 - T003. Bust @ 2.5cm below U/A (see page 7)
 - T005. Underbust @ seam / 35cm from SNP
 - T009. Hem width straight/ curved
 - T014. Shoulder strap length (with 5cm adjustment)
 - T015. Shoulder strap width
 - T016. Apex to Apex – front
 - T017. Apex to Apex - back
 - T019. Front neck drop
 - T022. Front armhole curved

Dress



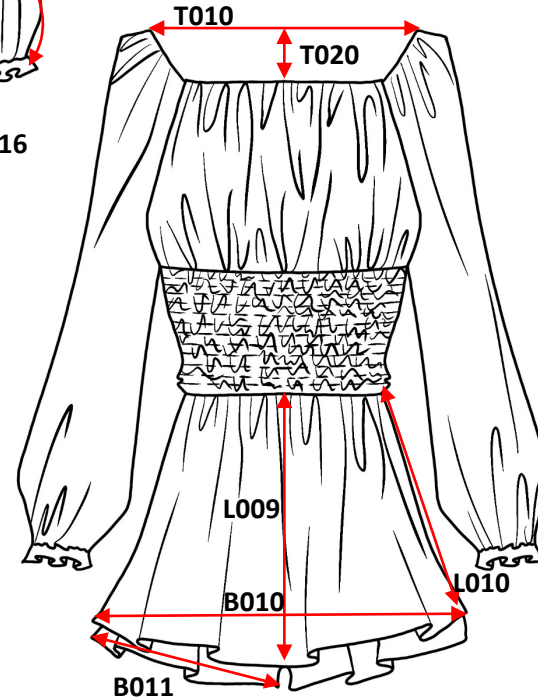
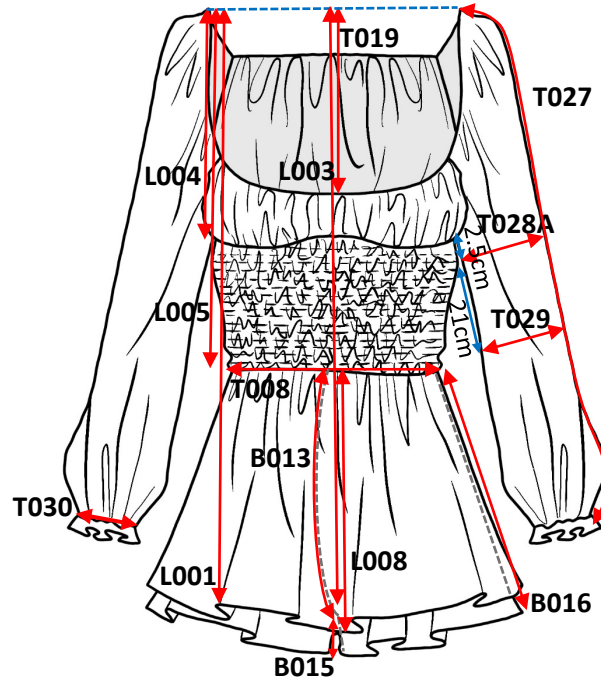
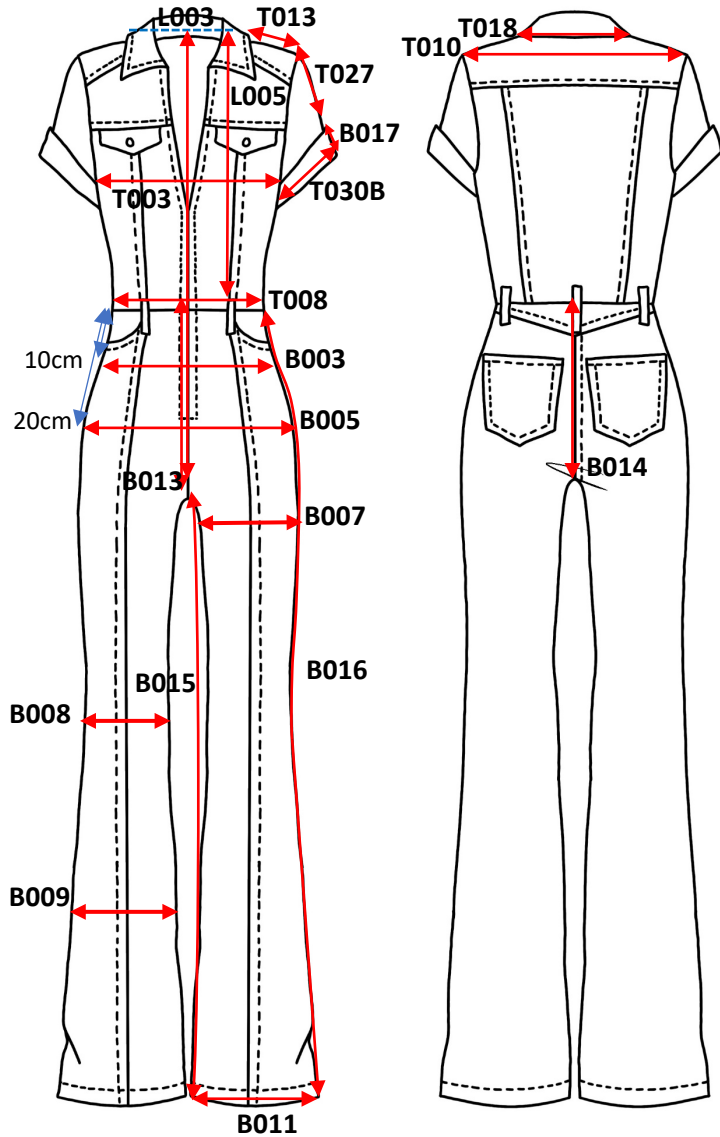
Version 2, 2025



KEY TO MEASURES:

- L001. SNP to hem
- L004. SNP to UB
- L006. CF length to hem
- L007. CB length to hem
- T003. Bust @ 2.5cm below U/A
- T006. Front top edge (for bandeau styles only)
- T007. Back top edge (for bandeau styles only)
- T008. Waist width @ 40cm from SNP/ 18cm from U/A Seam
- B003. Top hip @ 10cm from waist
- B005. Low hip @ 20cm from waist
- B010. Hem width
- B012. Hem depth
- T010. X shoulder
- T011. X front @ 13cm from SNP
- T012. X back @13cm from SNP
- T013. Shoulder seam length
- T018. Back neck width straight – seam to seam
- T019. Front neck drop
- T020. Back neck drop
- T021. Armhole straight
- T022. Front armhole curved
- T023. Back armhole curved
- T027. Overarm length – Shoulder point to cuff
- T030. Cuff opening
- G008. Front dart length
- G009. Back dart length
- G013A. Split Length
- G014A. Tie length (measure full length untied)
- G014B. Tie width
- G015. Keyhole length

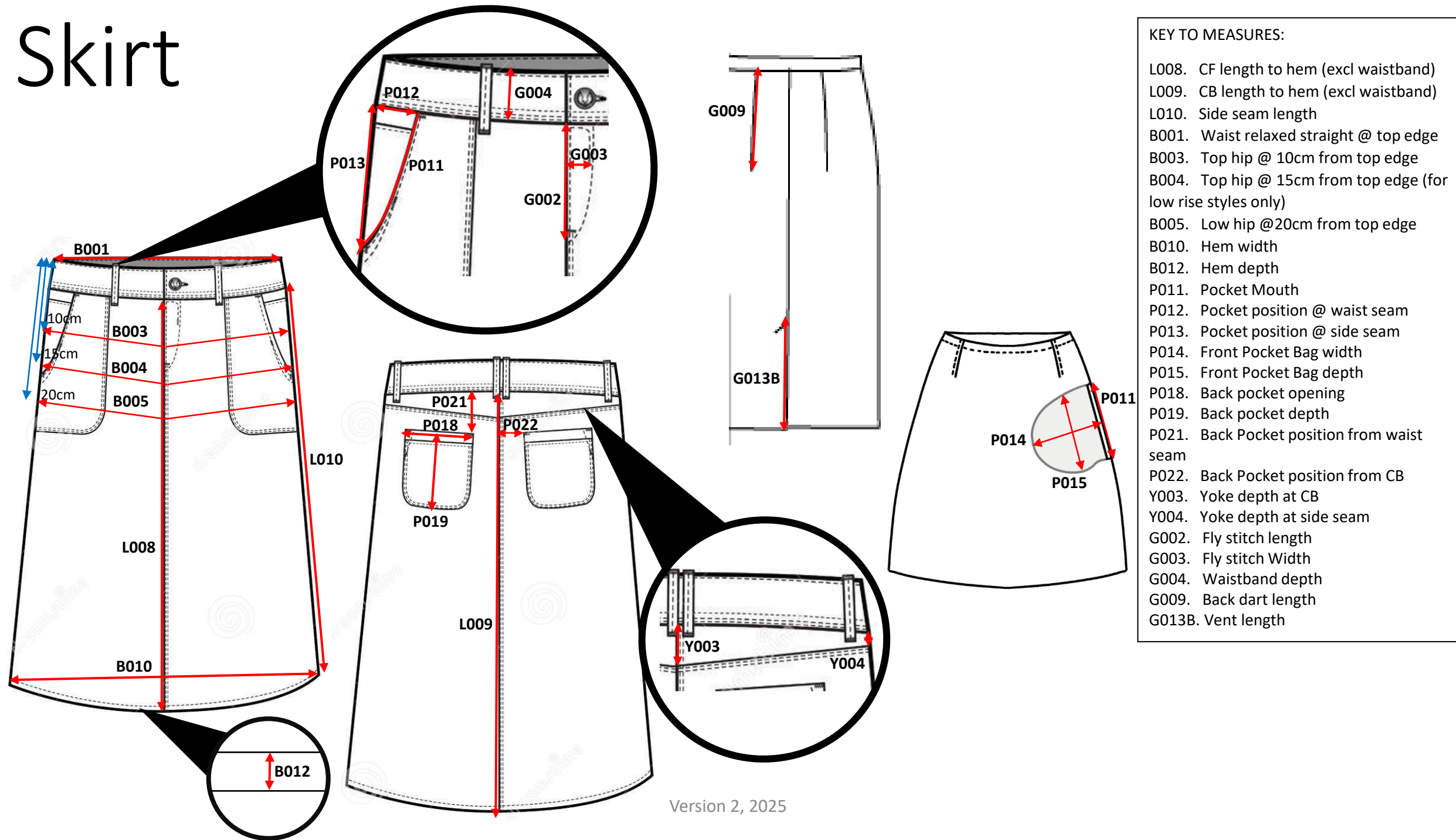
Jumpsuit



KEY TO MEASURES:

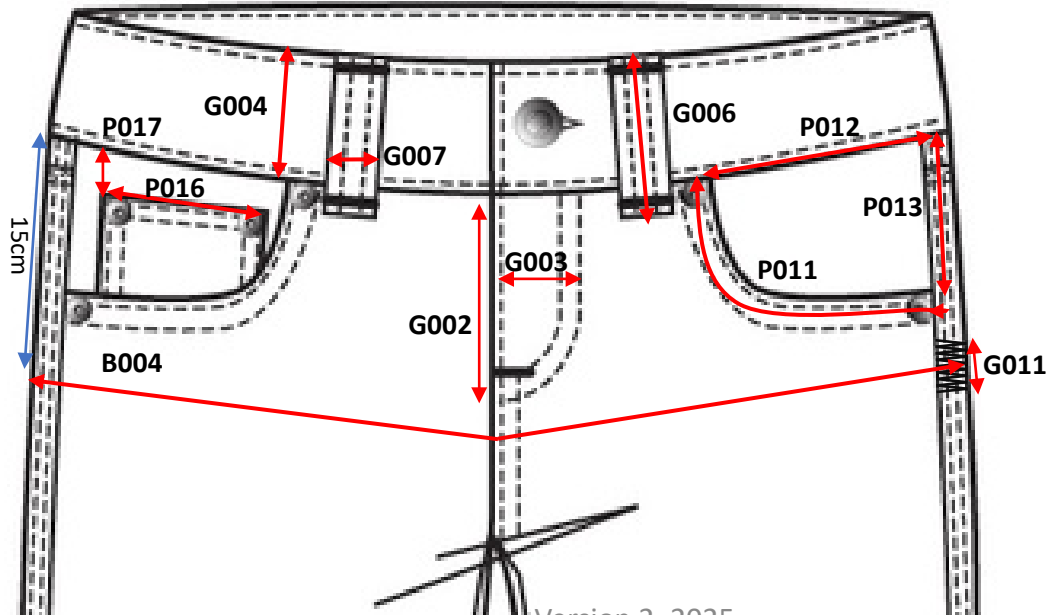
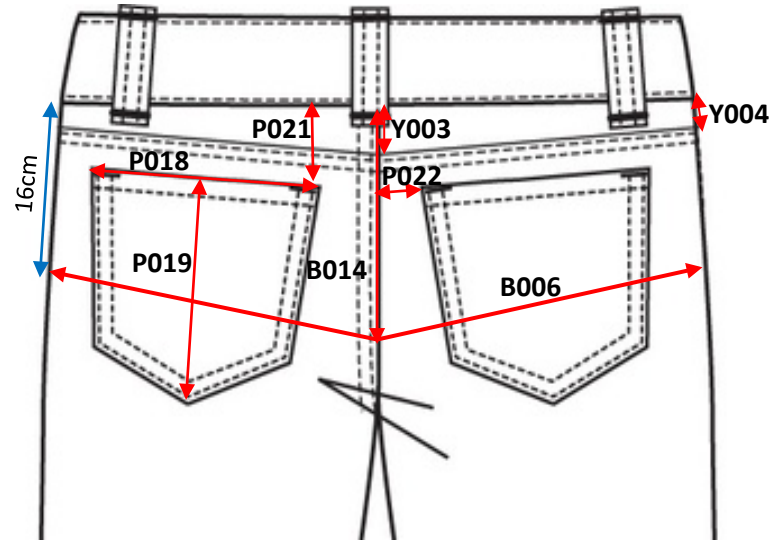
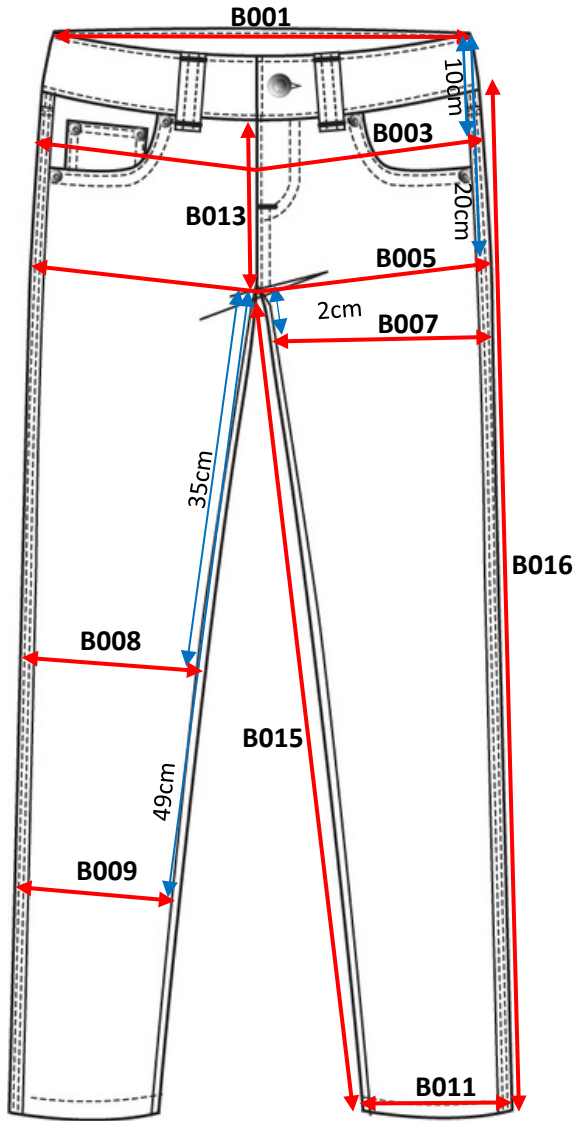
- L001. SNP to Hem
- L003. SNP to x fork (measured to fold)
- L004. SNP to UB
- L005. SNP to waist
- L008. CF length to hem (for styles with skirts)
- L009. CB length to hem (for styles with skirts)
- L010. Side seam length (for styles with skirts)
- T003. Bust @2.5cm below U/A (see page 7)
- T008. Waist @40cm from SNP/ 18cm from U/A / seam
- B003. Top hip (10cm from waist/top edge)
- B005. Low hip (20cm from waist/top edge)
- B007. Thigh (2cm down from fork)
- B008. Knee (35cm down from fork)
- B009. Calf (49cm down from fork)
- B010. Hem width
- B011. Hem straight
- B013. Front rise
- B014. Back rise
- B015. Inside leg
- B016. Outside leg
- T010. X Shoulder
- T013. Shoulder seam length
- T018. Back neck width straight – seam to seam
- T019. Front Neck drop
- T020. Back neck drop
- T027. Overarm length shoulder point to cuff
- T028A. Bicep 2.5cm below U/A
- T029. Elbow at 21cm from U/A
- T030. Cuff opening
- T030B. Cuff opening - Short sleeve
- B017. Turn up depth

Skirt



- KEY TO MEASURES:**
- L008. CF length to hem (excl waistband)
 - L009. CB length to hem (excl waistband)
 - L010. Side seam length
 - B001. Waist relaxed straight @ top edge
 - B003. Top hip @ 10cm from top edge
 - B004. Top hip @ 15cm from top edge (for low rise styles only)
 - B005. Low hip @ 20cm from top edge
 - B010. Hem width
 - B012. Hem depth
 - P011. Pocket Mouth
 - P012. Pocket position @ waist seam
 - P013. Pocket position @ side seam
 - P014. Front Pocket Bag width
 - P015. Front Pocket Bag depth
 - P018. Back pocket opening
 - P019. Back pocket depth
 - P021. Back Pocket position from waist seam
 - P022. Back Pocket position from CB
 - Y003. Yoke depth at CB
 - Y004. Yoke depth at side seam
 - G002. Fly stitch length
 - G003. Fly stitch Width
 - G004. Waistband depth
 - G009. Back dart length
 - G013B. Vent length

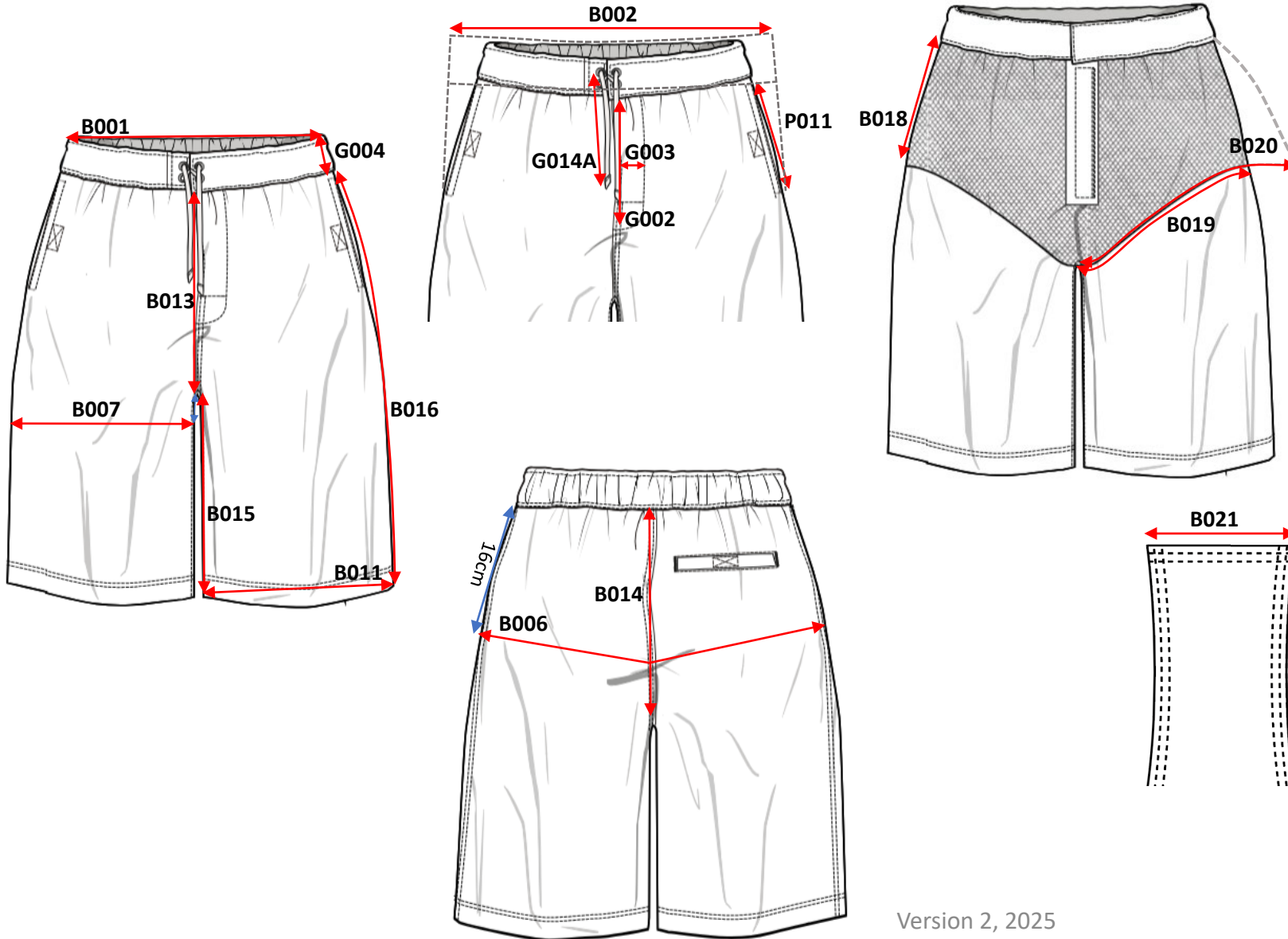
Trousers



KEY TO MEASURES:

- B001. Waist relaxed (straight at top edge, ensure waistband is flat and straight)
- B003. Top hip (10cm from waist/top edge)
- B004. Top hip (15cm from waist/top edge) (for below rise styles only)
- B005. Low hip (20cm from waist/top edge)
- B006. Seat 16cm from bottom edge of waistband (MW only)
- B007. Thigh (2cm down from fork)
- B008. Knee (35cm down from fork)
- B009. Calf (49cm down from fork)
- B011. Hem flat
- B013. Front rise (excluding waistband)
- B014. Back rise (excluding waistband)
- B015. Inside Leg
- B016. Outside leg length (excluding waistband)
- P011. Pocket Mouth
- P012. Front pocket opening at waist seam
- P013. Front pocket opening at side seam
- P016. Coin Pocket opening
- P017. Coin Pocket Position (from waist seam)
- P018. Back pocket opening
- P019. Back pocket depth
- P021. Back pocket position (from waist seam)
- P022. Back pocket position (from CB seam)
- Y003. Yoke depth at CB
- Y004. Yoke depth at side seam
- G002. Fly stitch length
- G003. Fly stitch width
- G004. Waistband depth
- G006. Belt loop length
- G007. Belt loop width
- G011. Hip stitch length

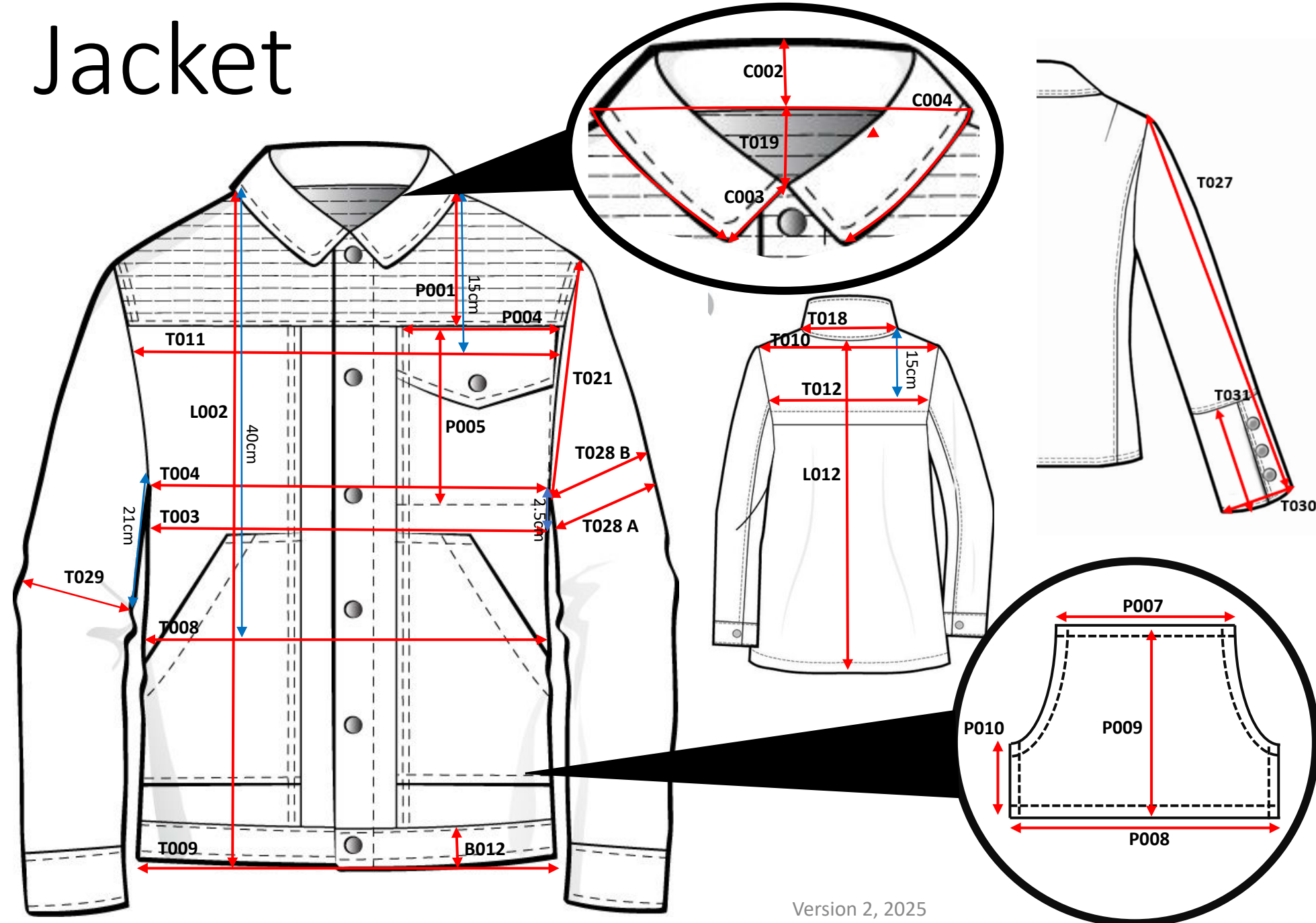
Shorts



KEY TO MEASURES:

- B001. Waist relaxed (straight at top edge, ensure waistband is flat and straight)
- B002. Waist extended
- B006. Seat 16cm from bottom edge of waistband
- B007. Thigh (2cm down from fork)
- B011. Hem flat
- B013. Front rise (excluding waistband)
- B014. Back rise (excluding waistband)
- B015. Inside Leg
- B016. Outside leg length (excluding waistband)
- B018. Internal pant – side seam depth (for MW Swim only)
- B019. Internal pant – ½ Leg opening – relaxed (for MW Swim only)
- B020. Internal pant – ½ Leg opening – stretched (for MW Swim only)
- B021. Internal pant – Gusset seam width (for MW Swim only)
- P011. Pocket Mouth
- G002. Fly stitch length
- G003. Fly stitch width
- G004. Waistband depth
- G014A. Tie length

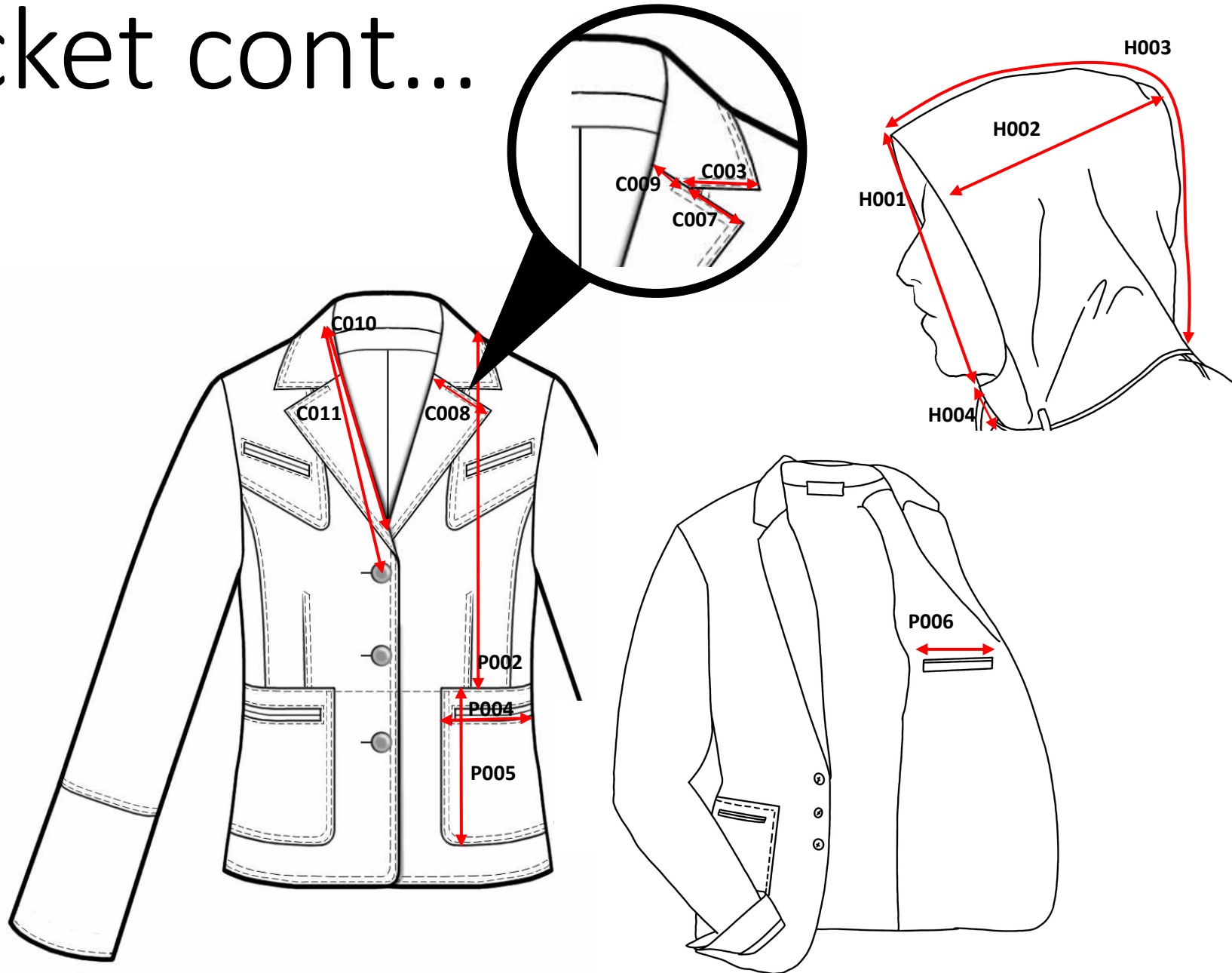
Jacket



KEY TO MEASURES:

- L002. SNP to hem
- L012. CB length to hem
- T003. Bust @ 2.5cm below U/A
- T004. Chest @ base of armhole / U/A
- T008. Waist width @ 40cm from SNP
- T009. Hem straight
- B012. Hem depth
- T010. X shoulder
- T011. X front @ 15cm from SNP
- T012. X back @ 15cm from SNP
- T018. Back neck width straight
- T019. Front neck drop
- T021. Armhole straight
- T028A. Bicep 2.5 cm below U/A
- T028B. Bicep at armhole (For MW only)
- T027. Overarm length (shoulder point to cuff)
- T029. Elbow @ 21cm from U/A
- T030. Cuff Opening
- T031. Cuff depth
- C002. Collar depth @ CB
- C004. Collar circ @ leaf edge
- C003. Collar point length
- P001. Pocket position from SNP/Top edge (chest pockets)
- P004. Pocket width
- P005. Pocket depth
- P007. Kangaroo Pocket – top edge
- P008. Kangaroo Pocket – Bottom edge to edge
- P009. Kangaroo Pocket – Depth @ centre
- P010. Kangaroo Pocket – Depth @ side

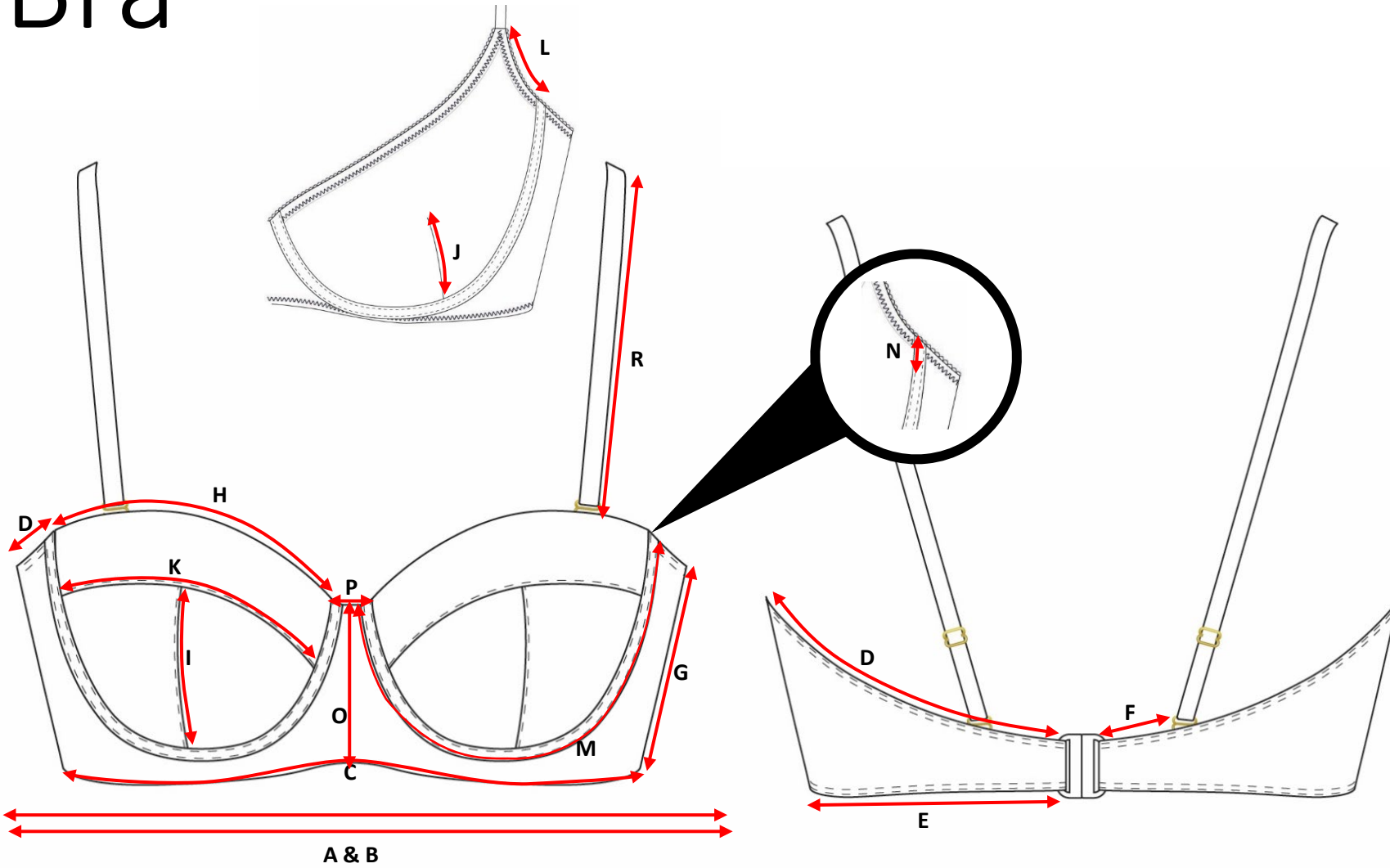
Jacket cont...



KEY TO MEASURES:

- C003. Collar point length
- C007. Revere point length
- C008. Lapel width from fold
- C009. Gorge Dart length
- C010. SNP to break point along bridle line
- C011. SNP to first button – diagonal
- P002. Pocket position from SNP (for lower pockets)
- P004. Pocket width
- P005. Pocket depth
- P006. Internal pocket opening
- H001. Hood height @Face edge
- H002. Hood width @ widest point
- H003. Overhead hood height
- H004. Collar stand at CF Mouth guard

Bra



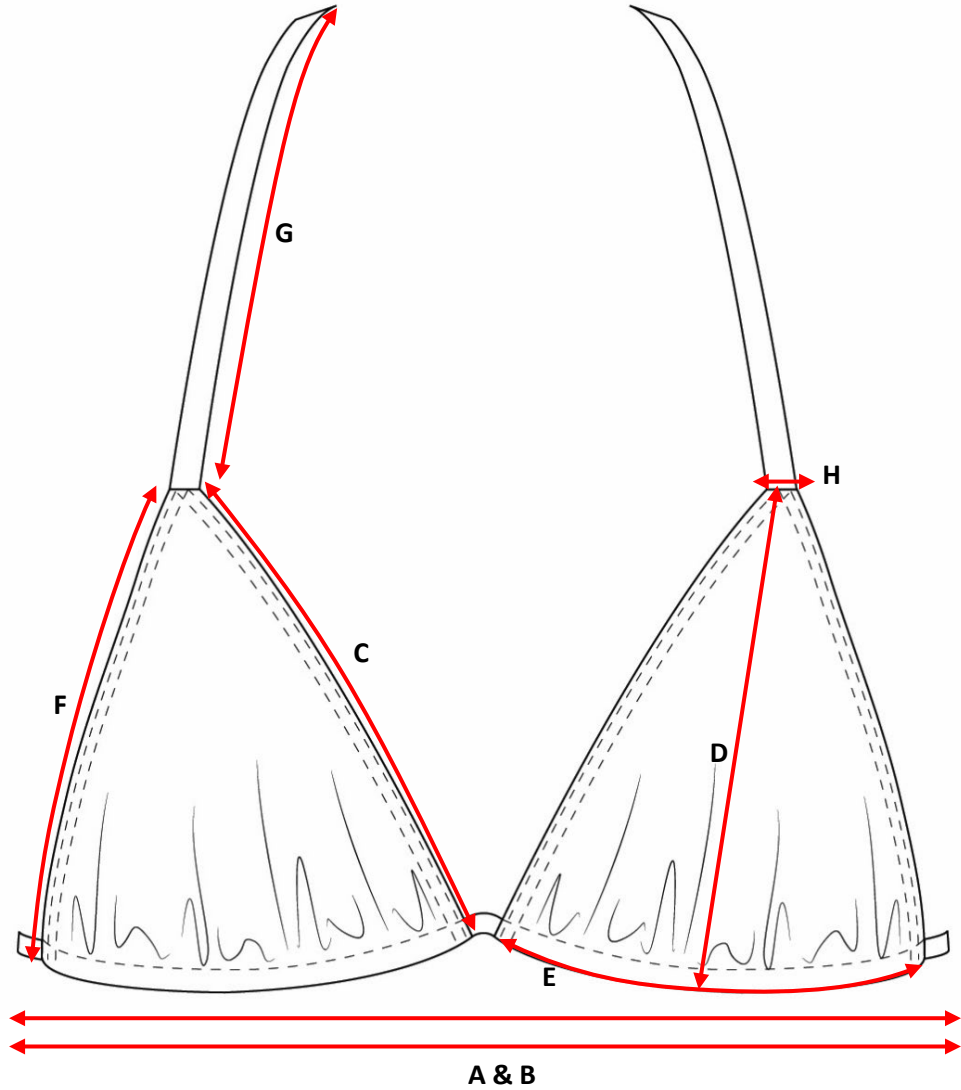
KEY TO MEASURES:

- A. Underband Relax (inc 1st hook)
- B. Underband Stretch
- C. Front Cradle along curve
- D. Top Wing
- E. Bottom Wing ex H/E
- F. Back strap position
- G. Side seam depth
- H. Neckline
- I. Vertical cup seam
- J. Dart length
- K. Horizontal cup seam
- L. Underarm
- M. Around wire (outer stitch)
- N. Wire Play
- O. CF depth
- P. Top of CF width inc wire casing
- Q. Bottom of CF
- R. Shoulder strap length

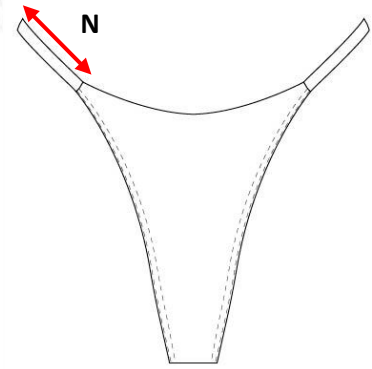
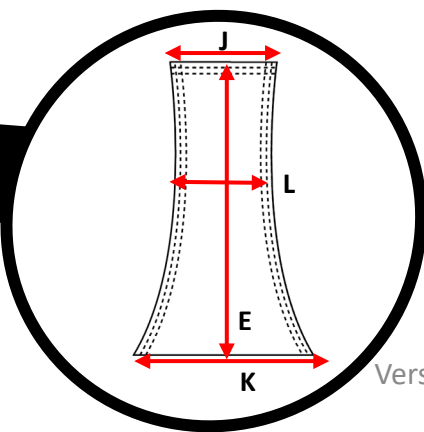
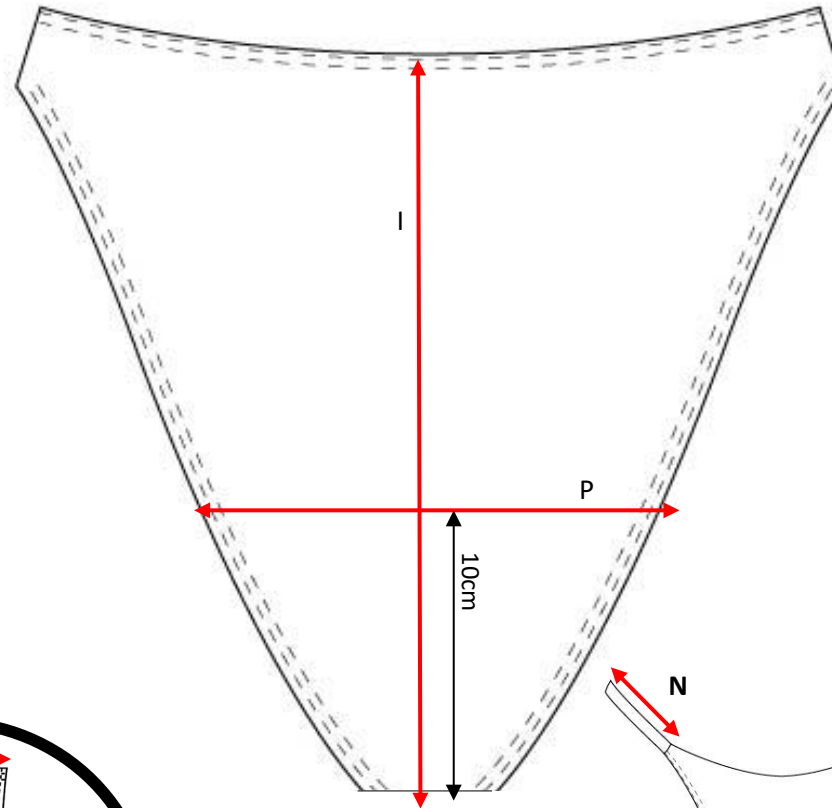
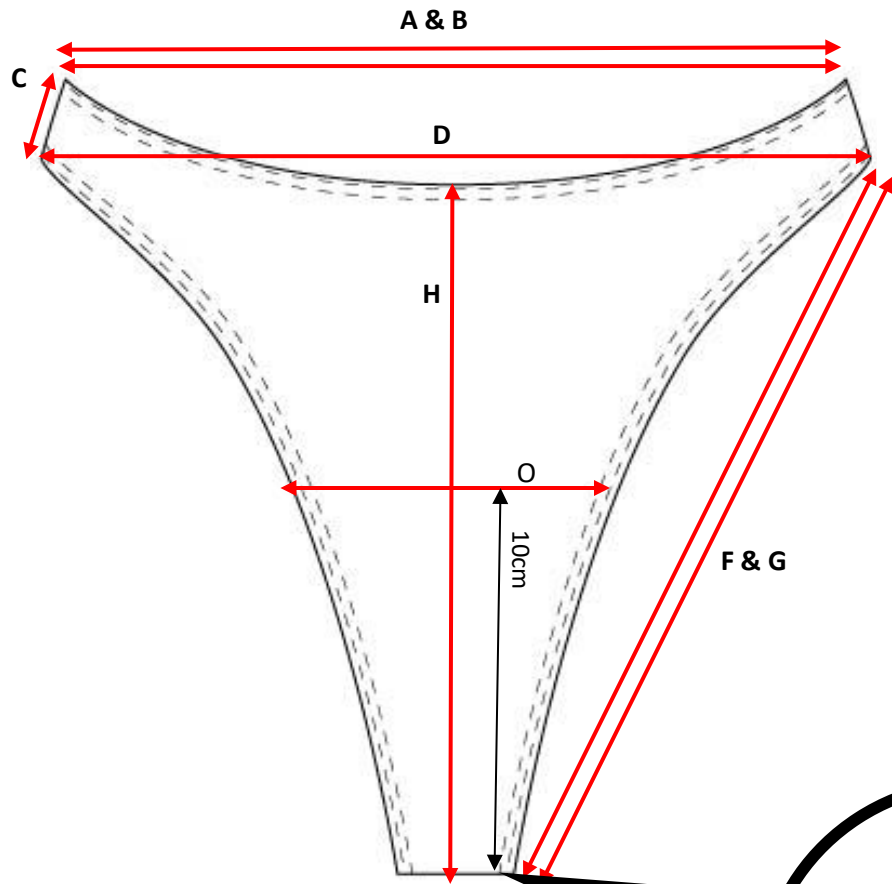
Bikini Top

KEY TO MEASURES:

- A. Underband Relax (inc 1st hook)
- B. Underband Stretch
- C. Neckline
- D. Cup Depth
- E. Bottom of cup width
- F. Cup Underarm
- G. Shoulder strap length
- H. Apex width



Brief



- KEY TO MEASURES:
- A. Waist ½ flat
 - B. Waist ½ stretch
 - C. Side seam length
 - D. High hip
 - E. Gusset length
 - F. Leg ½ straight
 - G. Leg ½ Stretch
 - H. Front rise
 - I. Back Rise
 - J. Front gusset width
 - K. Back gusset width
 - L. Gusset width at narrowest point
 - M. Waist band depth
 - N. Side Tanga Strap
 - O. Front coverage (10cm up from front gusset)
 - P. Back Coverage (10cm up from back gusset)