

# MARNI

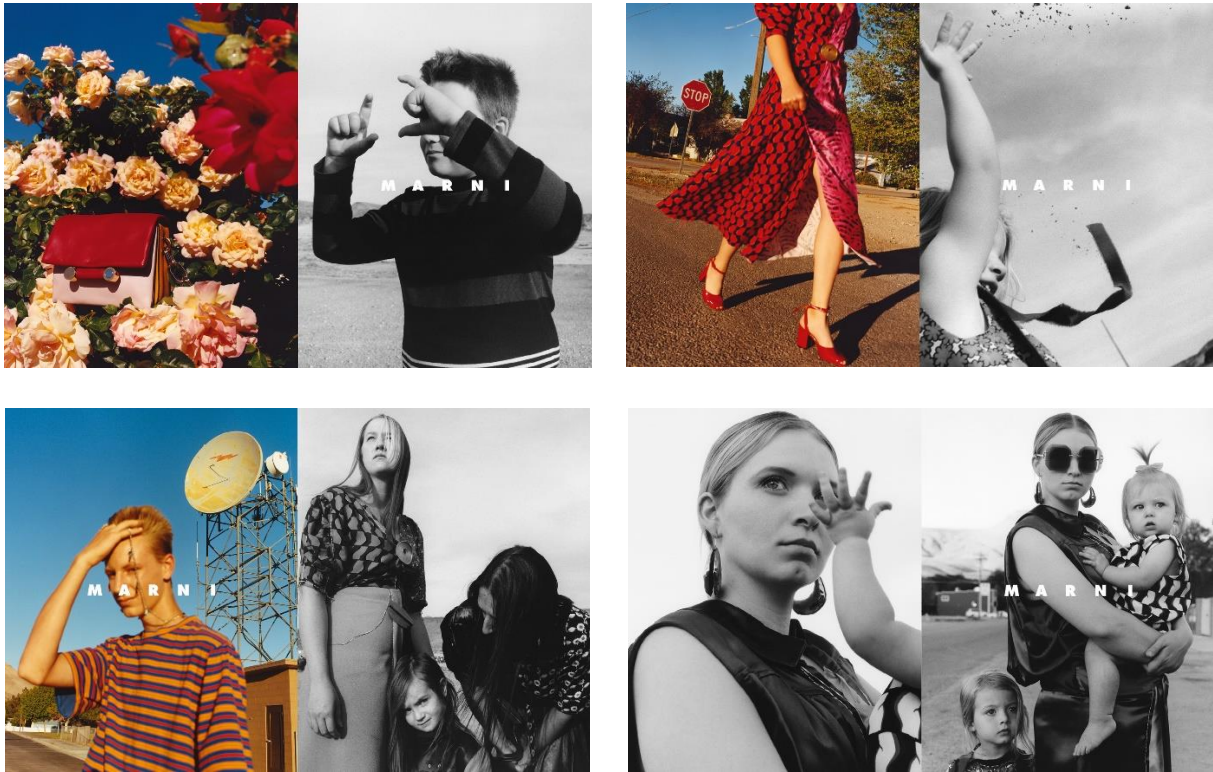
## MARNI FALL/WINTER 2018 ADVERTISING CAMPAIGN

A multifaceted story exploring the human connections that link members of a small community.

Jamie Hawkesworth reveals the most tender and primitive side of the Marni F/W 2018 collection, presenting a poetic collage of feelings and relationships, set in a place suspended in time and space.

Every character interprets Marni in a natural, spontaneous way, embodying that almost primordial need to construct pieces around the body in an instinctive style.

A chorus of voices that speak a universally shared language that unites these characters and affirms their individuality.



### CREDITS

Photographer – Jamie Hawkesworth

Art Direction – Giovanni Bianco & GB65

Casting – Midland Casting

Styling – Camilla Nickerson

Hair – Jimmy Paul

Make Up – Dick Page

Production – Sylvia Farago LTD Production