

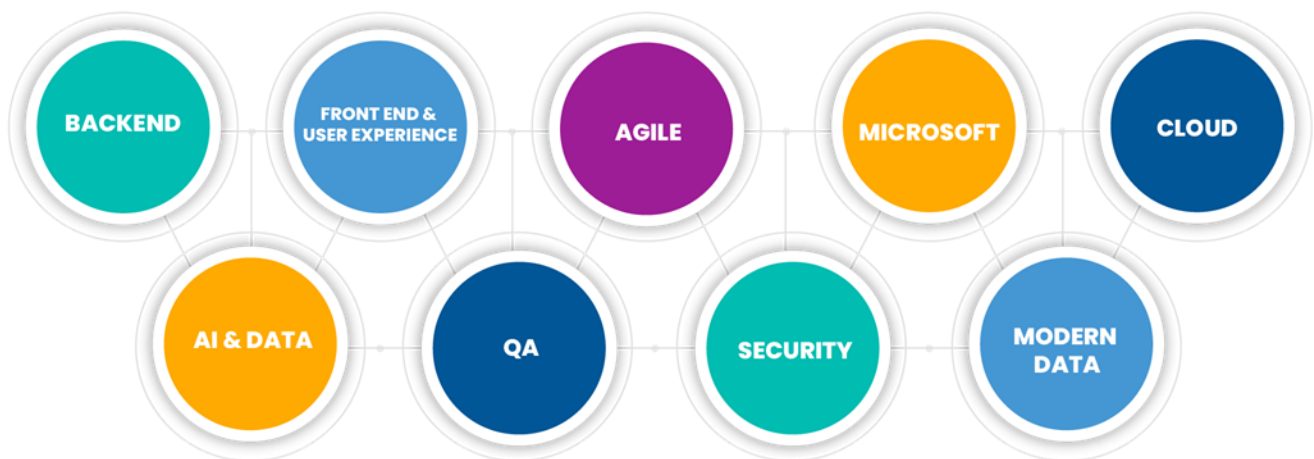
Shutdown App Snapshot

ABOUT US

Jump Analytics Inc. has been incorporated into the Improving brand, a 13-time Inc.500/5000 Honor Roll list recipient. Our clients span all vertical markets and industries as the solutions we deliver support for each market's key business goals and objectives. Our clients come to us knowing that we are experts in the industry, possessing deep knowledge and experience in Mining and asset-intensive industries.

Improving is a complete IT services company dedicated to positively changing the perception of the IT professional. Improving strives to be involved in all aspects of the IT world from software development to Consulting, and Hands-on training opportunities.

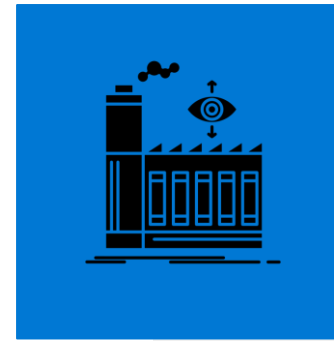
IMPROVING EXPERTISE



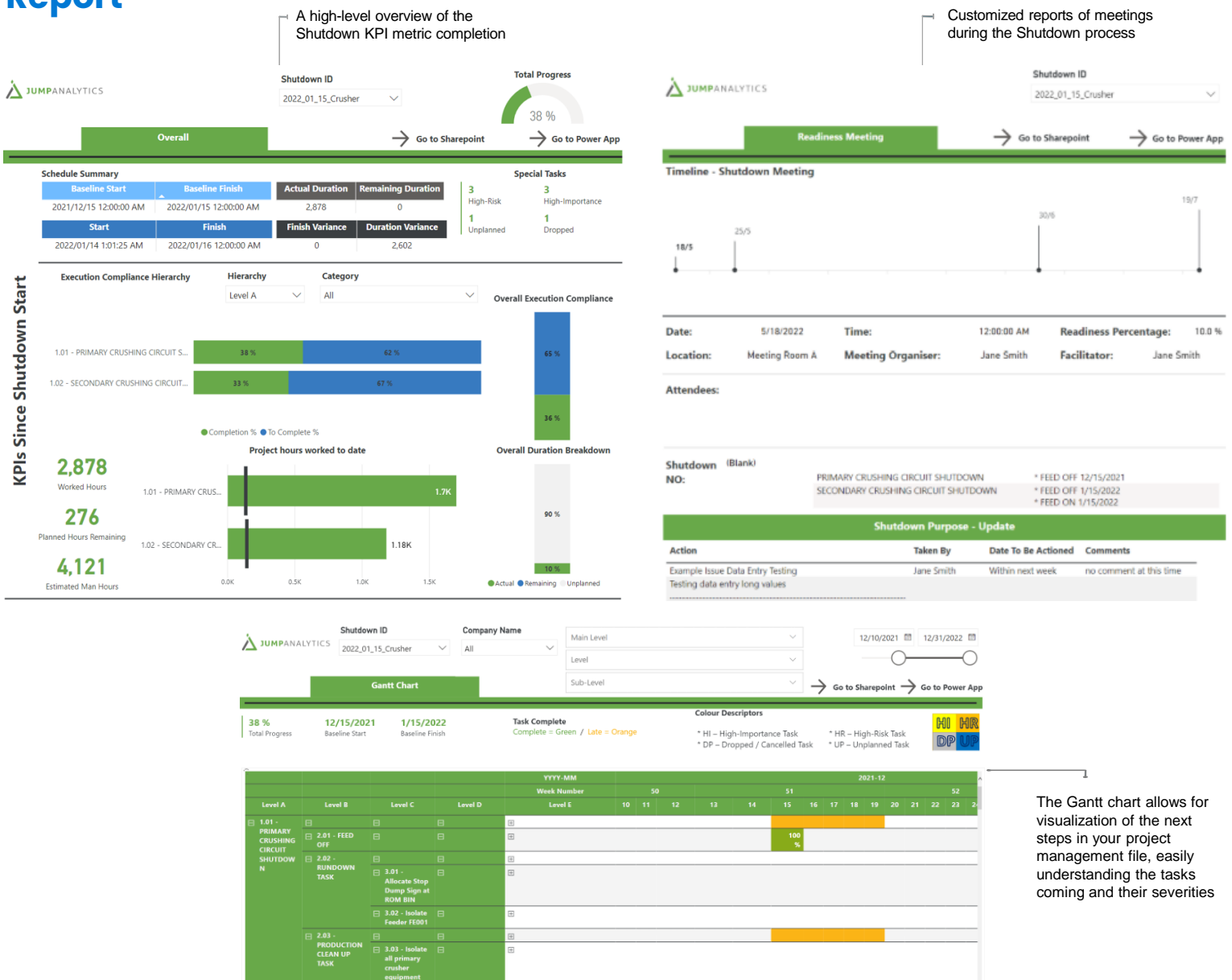
Shutdown Snapshot

Report Overview

- ✓ Enhances experience working with complex shutdown schedules
- ✓ Provides a centralized location for tracking shutdown activities
- ✓ Quantifies high-level KPIs to support companywide initiatives
- ✓ Eliminates need for manual report-building by utilizing back-end database
- ✓ Easily access historical data for tasks and meeting minutes across all shutdowns



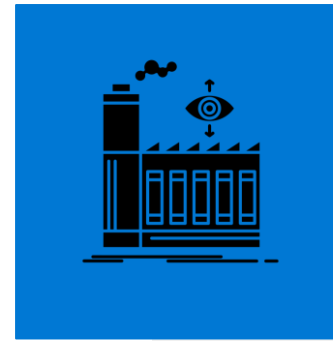
Report



Shutdown Snapshot

Application Overview

- ✓ Streamlines information travel, allowing for faster decision making
- ✓ Management across all stages of a Shutdown from leadup to closeout
- ✓ Allows creation of reusable leadup checklists to govern pre-shutdown tasks
- ✓ Augment Microsoft Project Schedules with consistent and thorough documentation of task progress, with optional inclusion of photos and supervisory approval (via physical signature)



Shutdown Menu

Main Menu > Shutdown Menu Selected Shutdown: 2021_12_12_Reline

Leadup Checklist Manager

Shutdown Task Manager

Meeting Minutes

Worker Directory

Manage tasks and keep up to date on readiness percentage during the leadup stage of shutdown

Review task forecasts and update task actuals

Maintain meeting minutes in an accessible location throughout the entire shutdown process

Review internal and external resources

Task Details

Main Menu > Shutdown Menu > Task Manager > Task Details Selected Shutdown: 2021_12_12_Reline

Details of Task - FEED OFF

Scheduled Start Date: 2021-12-12 Actual Start Date: 2021-12-12 17:10

Scheduled Finish Date: 2021-12-12 Actual Finish Date: 2021-12-12 17:30

Scheduled Duration: 12 hrs Estimated Man Hours: 3

Task Status: Complete Percent Complete: 100

Assigned Resources: Shutdown Employee2 Comments: Task ran well

Predecessors: None

Signed On: No Signature Recorded

Task Photos:

Save Changes

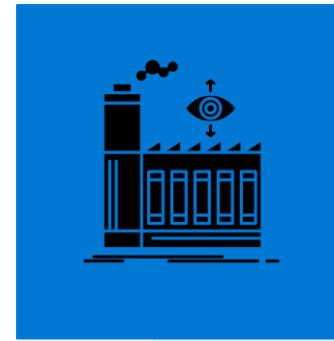
View forecasted task details extracted from Shutdown schedule

Update task actuals with details accessible in real time reporting and post shutdown reviews

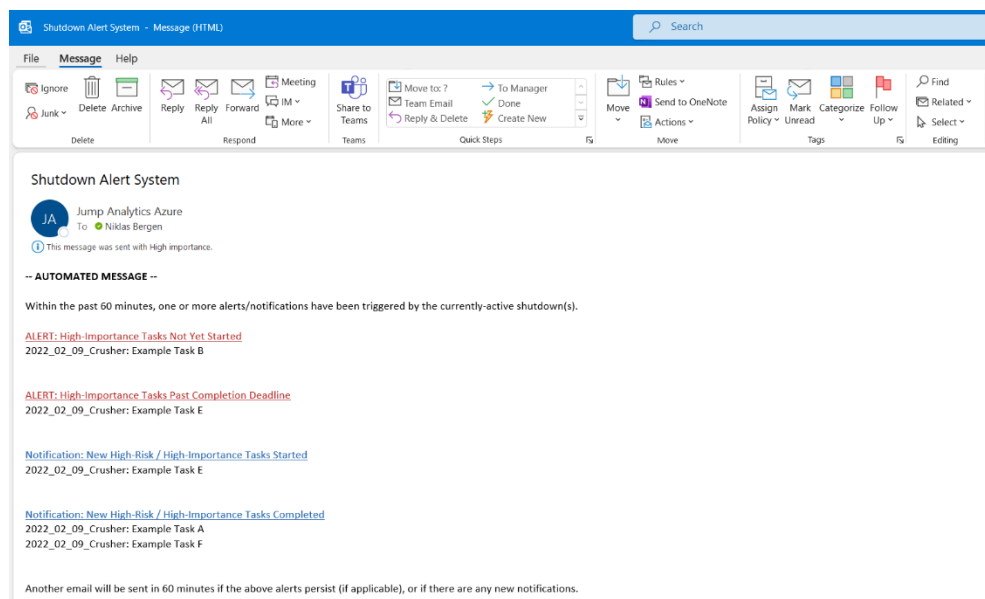
Shutdown Snapshot

Application Overview Cont.

- ✓ Access to filterable Shutdown-specific or Global resourcing lists
- ✓ Flag specific tasks as high-importance or high-risk for alert tracking
- ✓ Alerts can notify stakeholders of:
 - ✓ New task starts & completions
 - ✓ Late task starts & completions



Alert System



Worker Directory

Main Menu > Shutdown Menu > Worker Directory

Selected Shutdown: 2021_12_12_Reline

Global Worker Directory				
Full Name	Company	Department	Role	Shutdown Assignments
Shutdown Contractor1	Company1		Scaffolder	2021_07_01_Intermediate, 2022_01_15...
Phone No: 123-459-7739				
Email Address:				
Shift: Night Shift				
Shutdown Contractor2	Company1			2021_12_12_Reline
Phone No:				
Email Address:				
Shift: 12 Hours Night				
Shutdown Contractor3	Company2	Maintenance	Mechanical Fitter	2021_12_12_Reline, 2021_07_01_Inter...
Phone No:				
Email Address: Shutdown.Contractor3@jumpanalytics.onmicrosoft.com				
Shift: 12 Hours Night				

Expand and collapse record details

Review Contractor and Employee information separately

Visual indicators of missing data requested from contractors