



# Conference & Events

2026





## Events at King Power Stadium

Situated on the banks of the River Soar, Leicester City Football Club's King Power Stadium provides modern and contemporary meeting and events facilities in the heart of Leicester city centre, able to accommodate up to 650 delegates.



*Click to take a tour of our venue.*

For all enquiries please contact:

**Lucy Belfield**  
C&E Sales Manager

lbelfield@oakviewgroup.com  
0116 2294930

LCFCEvents@oakviewgroup.com



## Elevating conferences and events with world-class catering.

Oak View Group's hospitality excellence brings world-class catering and event expertise to conferences and gatherings at Leicester's King Power Stadium. As a global leader in premium food and beverage services, OVG combines culinary creativity, exceptional service, and innovative solutions to elevate every event experience.



# Level One Rooms

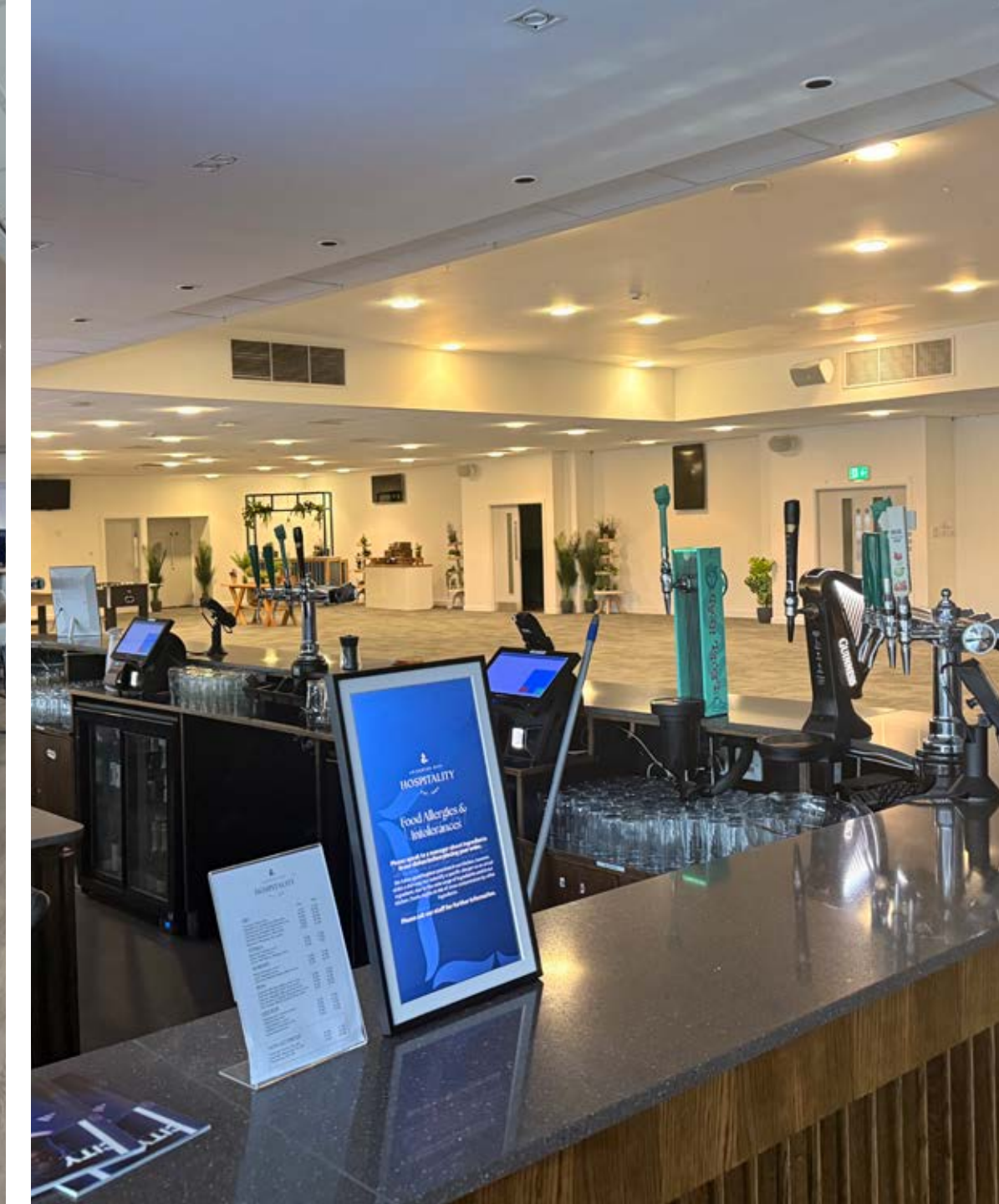
Our two largest suites, the Walkers Hall and Keith Weller Lounge can be hired individually or together to suit your requirements with a total capacity of up to 1,150 guests.

All three suites are on the first floor and are fully accessible with natural daylight and air conditioning.



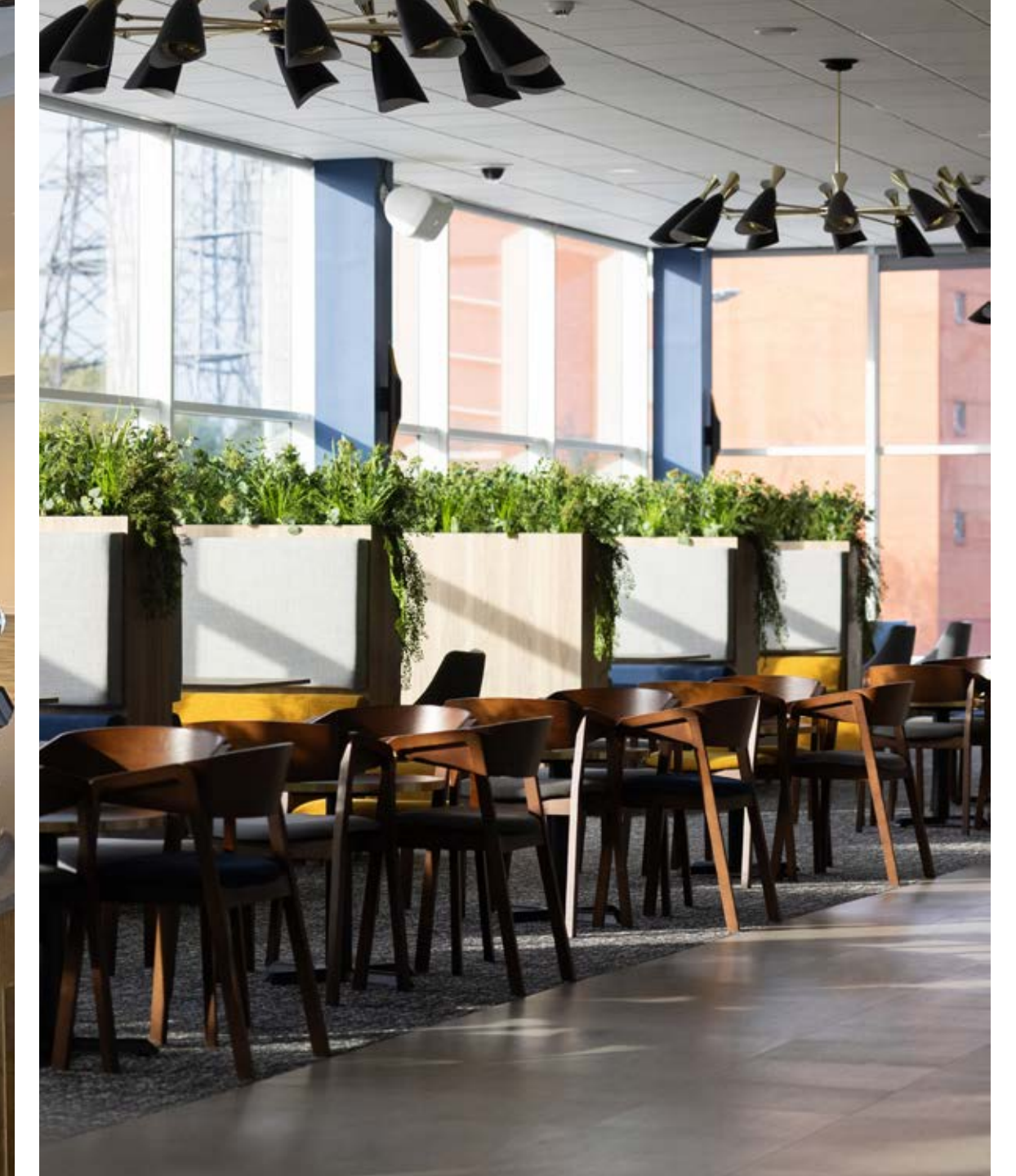
## Walkers Hall

The Walkers Hall has many wall mounted TV's in the room that can be plugged into for any event.



## Keith Weller Lounge

The Keith Weller Lounge has a video wall which is 14 square metres and is the perfect addition to make any presentation stand out.



## Reception Lounge

The Reception Lounge is a shared area between both rooms made up of fixed informal seating and a fully functional bar.

Capacities	Theatre	Boardroom	Classroom	U-Shape	Cabaret	Buffet with tables	Buffet no tables	Dinner/Dance	Dinner
Walkers Hall	650	72	250	54	450	550	670	500	600
Keith Weller Lounge	500	72	200	54	350	400	530	400	450
Reception Lounge	150	N/A	N/A	N/A	N/A	80	180	N/A	N/A

# Level Two Rooms

All rooms are situated on the second floor and are fully accessible with natural daylight and air conditioning.



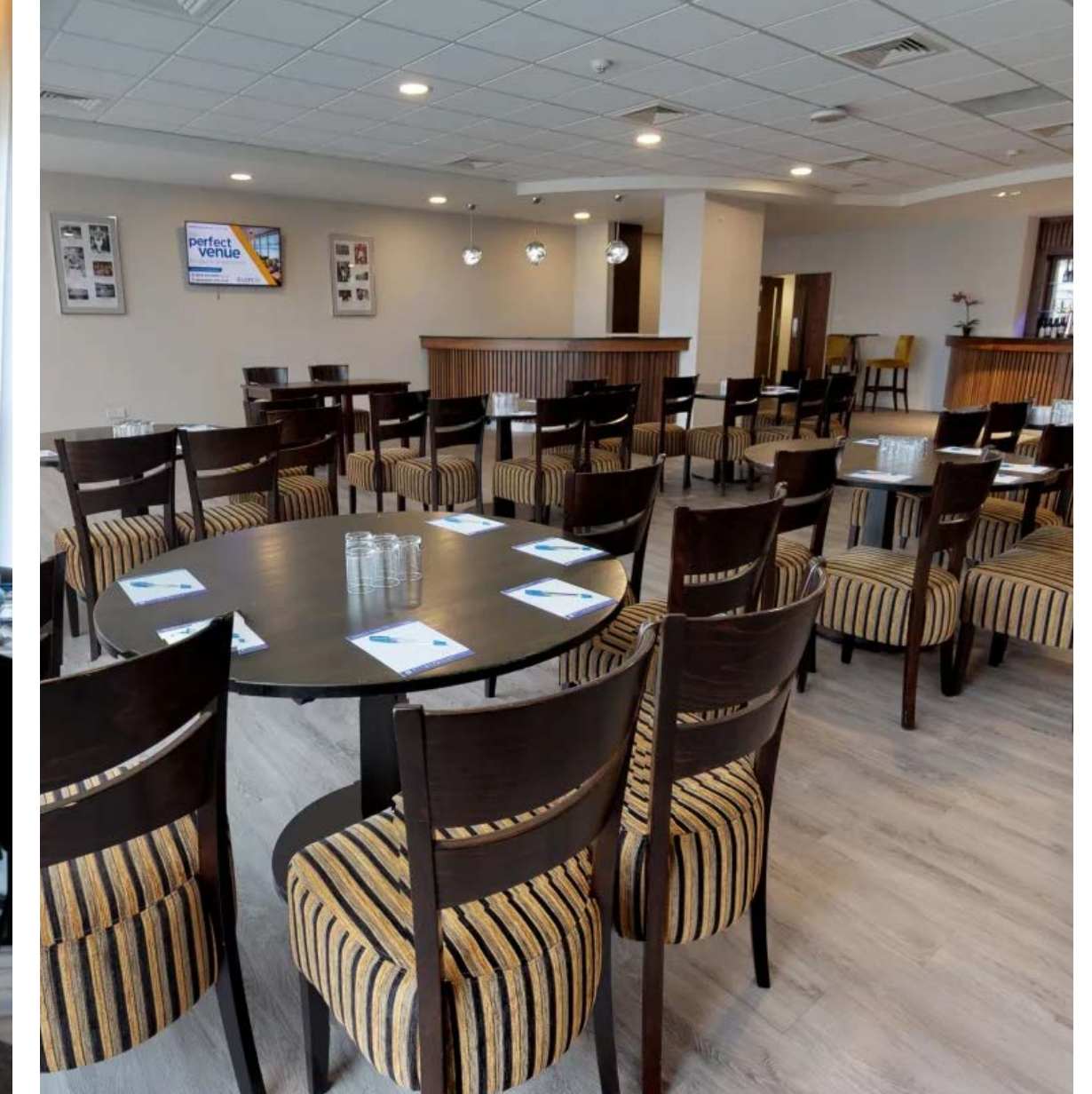
## Premier Lounge 1 & 2

Premier Lounge 1 and Premier Lounge 2 are versatile rooms that can be used as one large room or two separate rooms. They are a mirror image of each other with a sound proof partition when used for separate meetings. The rooms have contemporary style seating, a bar and a projector screen.



## Champions Club

The Champions Club is perfect for a cabaret style conference or banqueting style dinner. The room boasts its own reception and bar area and has fixed plasma screen TV's.



## Rowley Suite

The Rowley Suite is ideal for more intimate meetings and events. There are three fixed booths in the room with a service area to maximise space. The Rowley Suite also has a projector screen.

Capacities	Theatre	Boardroom	Classroom	U-Shape	Cabaret	Buffet with tables	Buffet no tables	Dinner/Dance	Dinner
Premier Lounge 1	80	24	32	15	36	50	80	N/A	50
Premier Lounge 2	80	24	32	15	36	50	80	N/A	50
Champions Club	N/A	N/A	N/A	N/A	80	120	N/A	108	108
Rowley Suite	50	24	50	24	48	80	90	50	60

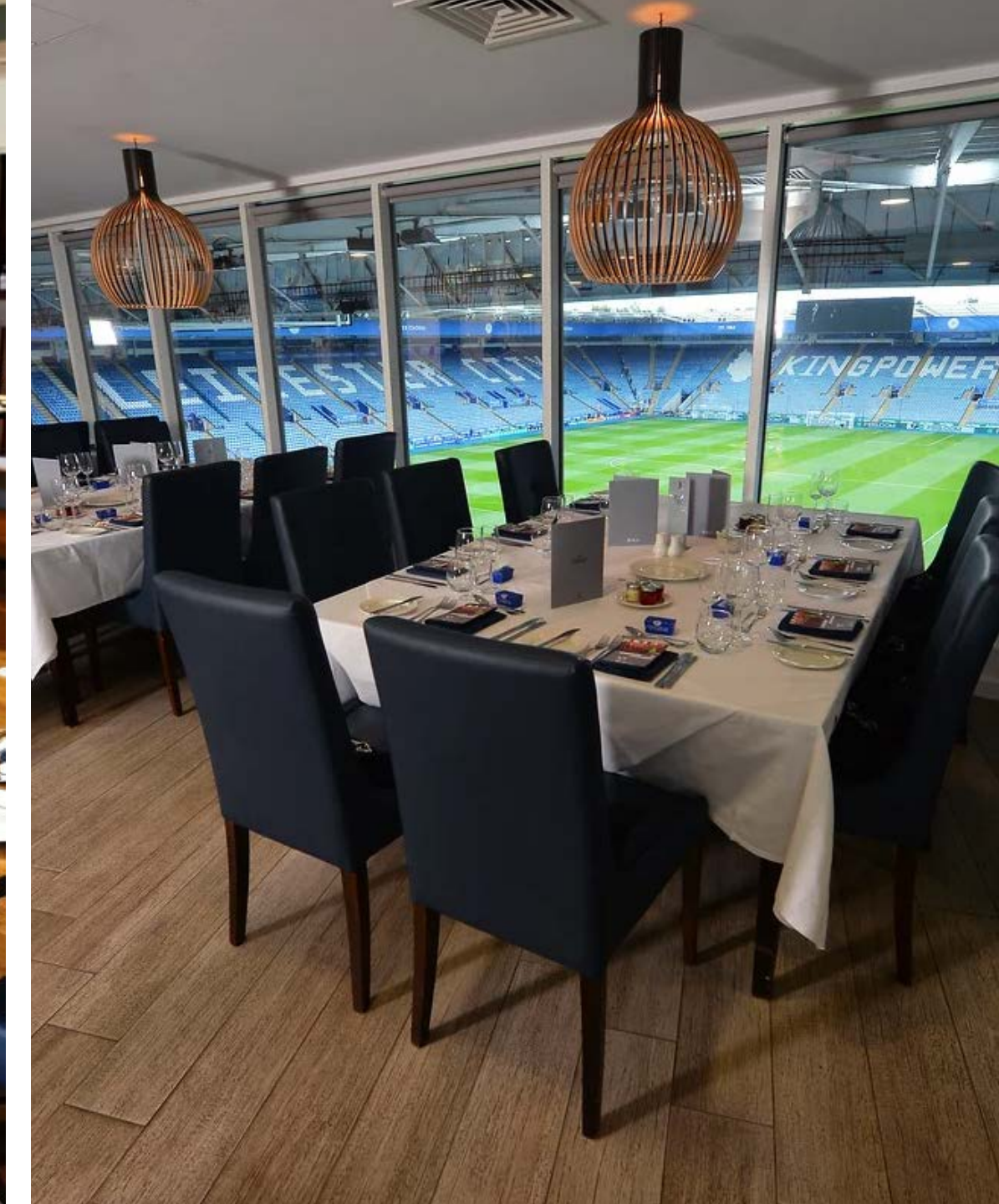
# Level Three Rooms

The Banks Lounge, Gallery and Executive Boxes are all on the third floor, are fully accessible with natural daylight and air conditioning.



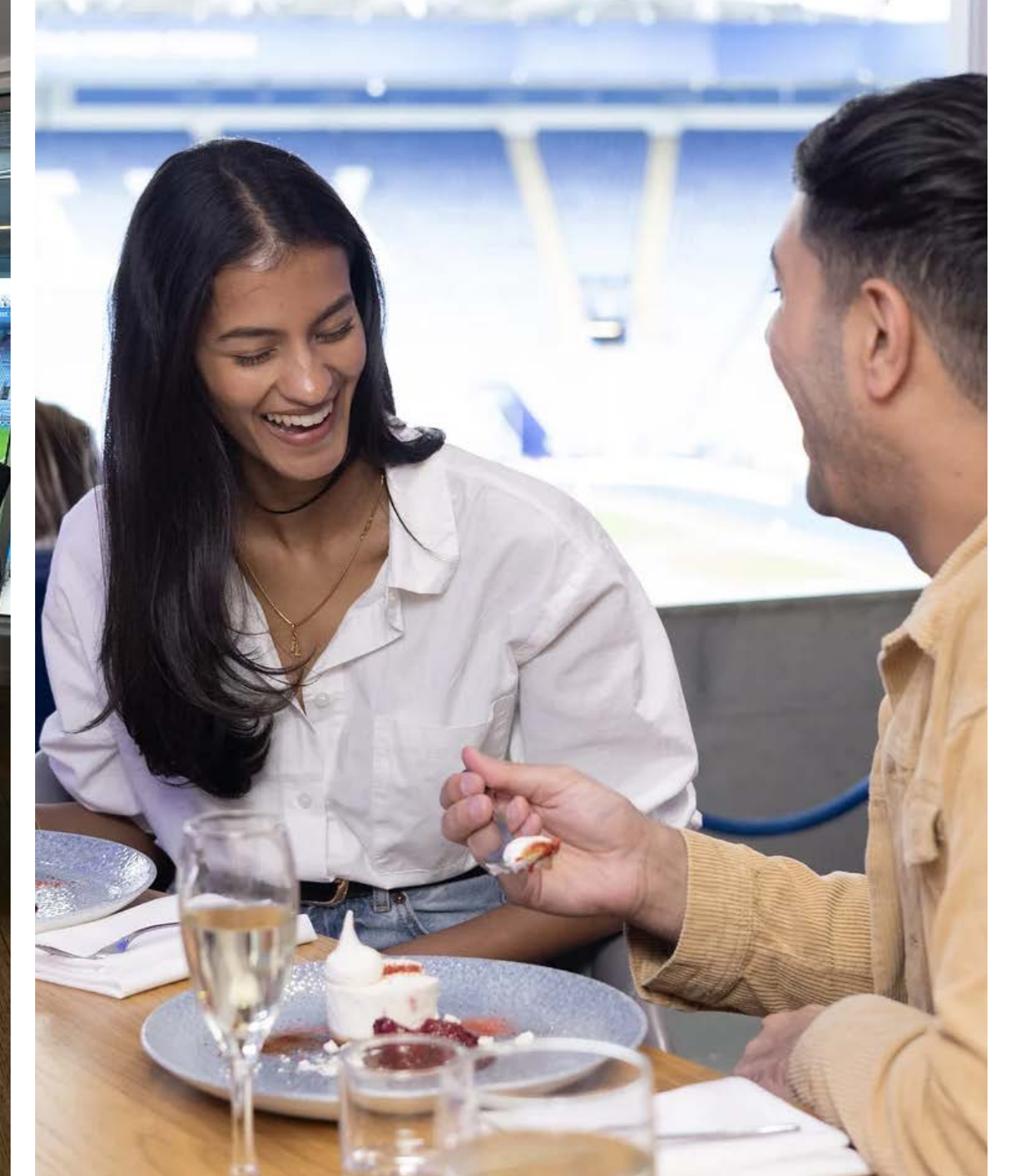
## Banks Lounge

The Banks Lounge is ideal for both private and corporate events with views of the River Soar.



## The Gallery

The Gallery has stunning views of the King Power football pitch. This room is fully flexible to accommodate a conference, dinner or wedding reception. The room has a contemporary feel with some impressive wall art.



## Executive Box

There are 43 Executive Suites and two TV Studios all with outstanding views of the football pitch. They feature modern facilities including plasma screen TV's and tea and coffee making facilities.

## Capacities

	Theatre	Boardroom	Classroom	U-Shape	Cabaret	Buffet with tables	Buffet no tables	Dinner/Dance	Dinner
Banks Lounge	150	48	84	36	80	120	160	120	140
The Gallery	90	24	30	20	48	90	N/A	80	90
Executive Box	N/A	12	N/A	N/A	N/A	12	N/A	N/A	12

# Day Delegate Rate

Our Day Delegate Rate includes arrival refreshments with freshly baked pastries, followed by mid-morning refreshments and snacks to keep delegates energised throughout the day. A flexible lunch offering is available, with options ranging from a working sandwich lunch to a finger food buffet or a hot fork menu, allowing you to cater perfectly to your audience.

Afternoon refreshments and snacks are also provided, alongside the support of a dedicated event planner. Your package includes complimentary car parking, room hire in a suite best suited to your event, an in-suite screen, and complimentary Wi-Fi access for all delegates.

## SAMPLE MENU

---

### On Arrival

Tea and coffee

Still and sparkling mineral water

Hydration stations

Mini selection of Danish pastries

Fresh seasonal fruit basket

---

### Afternoon Snack

Tea and coffee

Still and sparkling mineral water

Hydration stations

Banana bread

Mini cookies

---

### Mid Morning Break

Tea and coffee

Still and sparkling mineral water

Hydration stations

Chef's choice of snack bite



# Day Delegate Rate

## Traditional hot and cold fork buffet

Choose one from the below

---

**Braised beef shin and red wine lasagne**

Crisp green salad, focaccia bread basket

**Butter chicken**

Braised mushroom pilau rice, poppadom, raita, mango chutney

**Beef bourguignon**

Mashed potatoes and seasonal greens

**Thai green chicken curry**

Coconut broth and sesame noodles

**Chicken, chorizo, butterbean and paprika stew**

Buttered new potatoes

Choose one from the below

---

**Baked four cheese macaroni v**

Thyme and confit garlic pangrattato

**Ratatouille à la provençale v**

Braised puy lentils and crème fraîche

**Spinach, pumpkin and sweet potato, lentil dahl ve**

Braised mushroom rice

**Sweet potato, chickpea, spinach and paprika stew ve**

Buttered new potatoes

**Puy lentil and porcini mushroom lasagne ve**

**Tofu and aubergine Thai green curry ve**

Coconut broth and sesame noodles

**Lemon tart**

**Chocolate brownie**



# Banqueting

---

## Starter

**Beetroot cured salmon**

Heritage beetroot, mustard mayonnaise and watercress

**La Latteria burrata**

Fennel jam, Dijon vinaigrette and sesame flatbread crumb

**Pulled ham hock croquette**

Piccalilli gel, Parma ham crisp, pickled carrot

**Twice baked cheese soufflé** v

Cauliflower velouté, reblochon foam and winter truffle

**Pressed chicken**

Apricot, curried yoghurt gel, crispy chickpeas and baby coriander salad

**Beetroot hummus**

Crumbled feta, feves, tortilla crisp and molasses syrup

All served with artisan bread basket and cultured butter



# Banqueting

---

## Main Course

### **Pavé of Cornish hake**

Leek vichyssoise, creamy mashed potato, trout roe crumb and pak choi cress

### **Gilt-head sea bream**

Potato gnocchi, mushrooms, chestnuts, roasted fish jus and salsa verde

### **Glazed short rib**

Pomme aligot, sweet and sour onions, miso aubergine purée and garlic chive oil

### **Cornish hen**

Confit pink fur potato, black garlic purée, rainbow chard and foraged mushrooms



### **Launceston lamb rump**

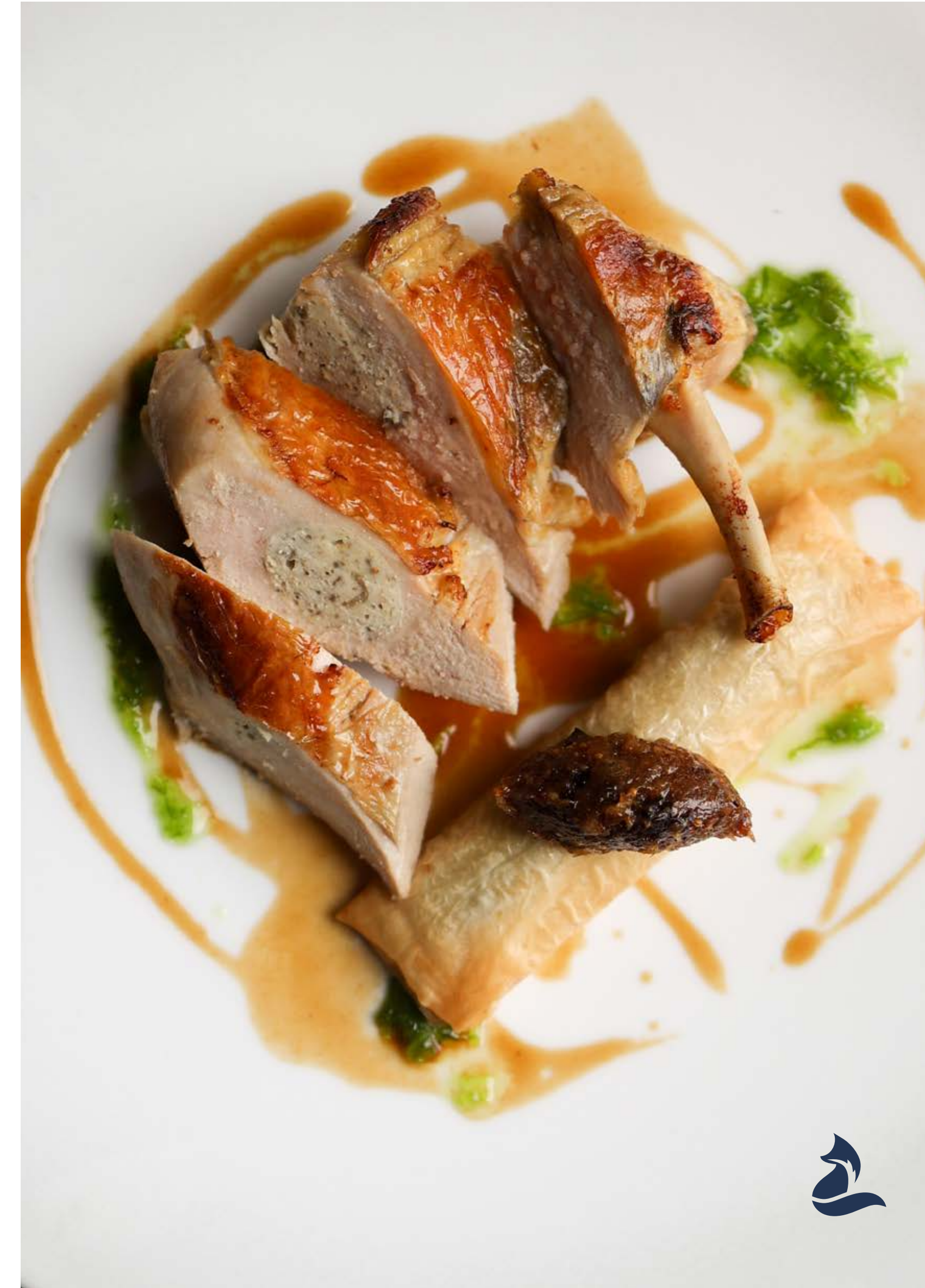
Creamed kale, torched potato terrine, roasted grelots and sea lettuce

### **Cauliflower steak ve**

Cauliflower couscous, apple and raisin purée, curry emulsion, carrot and onion bhaji

### **Winter vegetable pithivier ve**

Charred hispi cabbage, smoked olive oil pomme purée, romesco sauce and roasted vegetable jus



# Banqueting

## Dessert

### **Blackberry and apple pannacotta**

Cinnamon crumble, apple blossom

### **Tropical baba**

Mango and pineapple, Tahitian vanilla chantilly

### **Choux à la crème v**

Crunchy choux pastry, mandarin cream, white chocolate chantilly, citrus salad

### **Honey and pear vacherin v**

Honey and vanilla parfait, pear, crunchy meringue, roasted pear purée

### **Chocolate and raspberry tart v**

Raspberry gel, berries, red amaranth, raspberry crumble

All served with a selection of petit fours and freshly brewed tea and coffee





# Events at the King Power Stadium

King Power Stadium provides the perfect versatile and memorable venue for your Christmas parties, proms, exhibitions, and social celebrations. With a range of contemporary spaces, from large suites perfect for festive dinners and themed celebrations, to elegant lounges ideal for proms or private gatherings. Expert event planning, flexible catering, and outstanding facilities ensure that your celebration will be seamless and spectacular in this iconic Leicester setting.



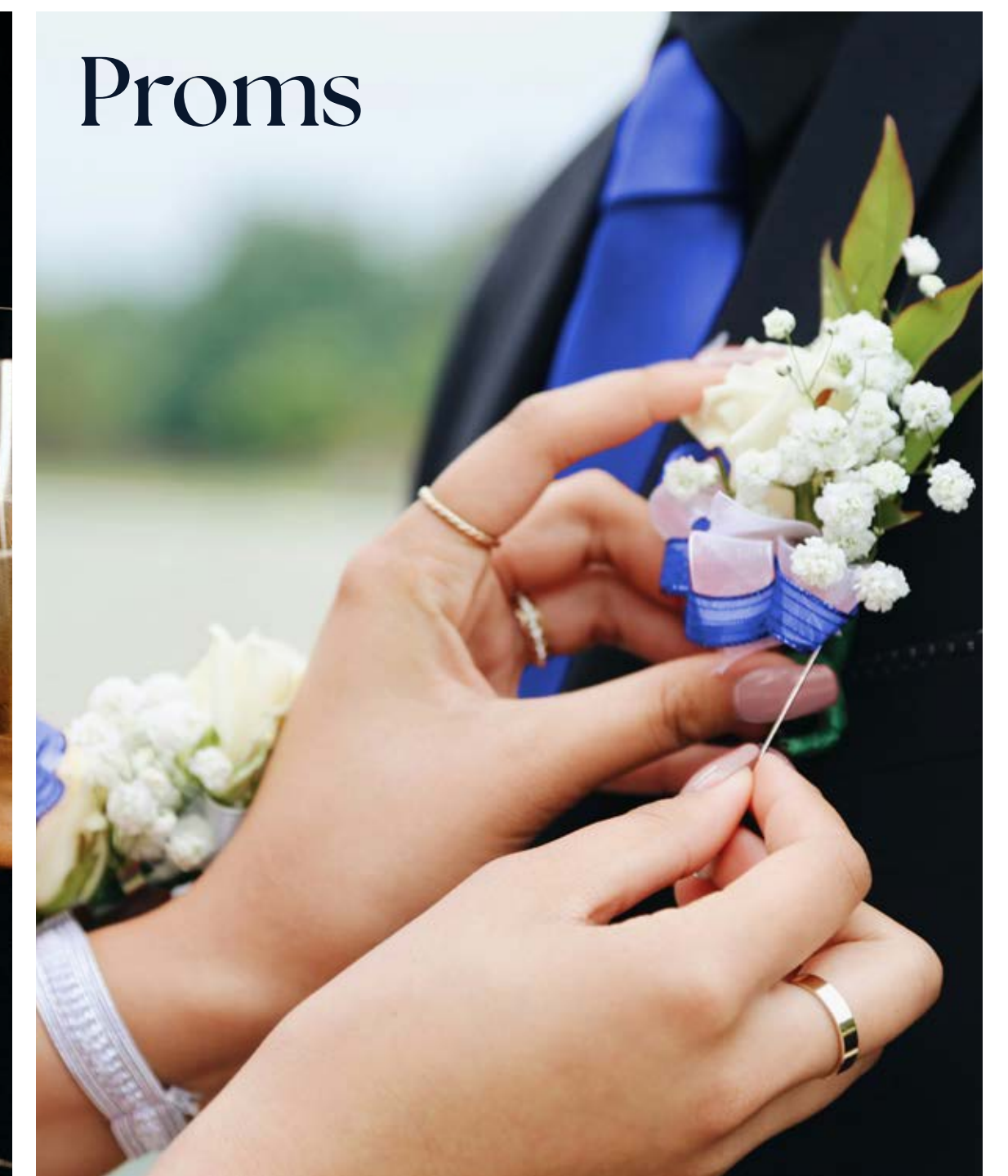
Christmas



Exhibitions



Social celebrations



Proms

---

For all enquiries please contact:

**Lucy Belfield**

C&E Sales Manager

lbelfield@oakviewgroup.com

0116 2294930



# Conference & Events

2026

