

Nokia Go Earbuds+  
TWS-201

Quick Start Guide

**NOKIA**

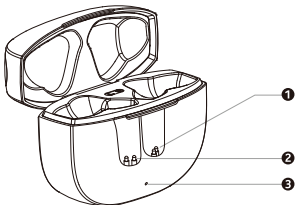
## What's in the box

- Charging case
- Earbuds (L/R)
- Ear tips (S/M/L)
- USB Type-C cable
- Quick Start Guide

## Product Overview

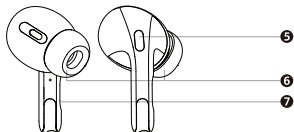
### Charging case:

<b>1</b>	Charging contacts (R)
<b>2</b>	Charging contacts (L)
<b>3</b>	Battery status LEDs
<b>4</b>	USB Type-C port



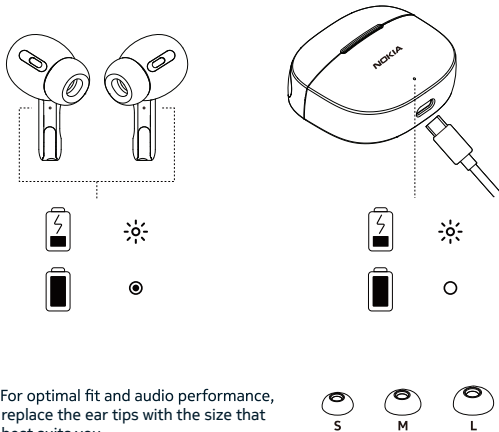
### Earbuds:

<b>5</b>	Microphone
<b>6</b>	Ear tip
<b>7</b>	Touch bar



## 1. Get started

- 1.1 Before using Nokia Go Earbuds+, take off the film on the earbuds and place the earbuds back in the charging case. Then connect the USB Type-C cable to a power source to begin charging. Fully charge the earbuds and the charging case before the first use.



- 1.2 For optimal fit and audio performance, replace the ear tips with the size that best suits you.

## 2. Pair and connect with Bluetooth

### 2.1 Pairing with the device

#### 2.1a Turning on and pairing:

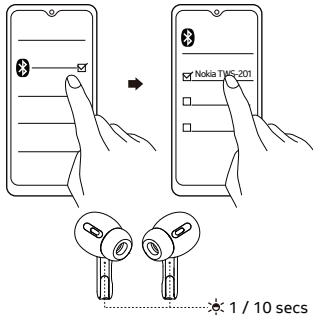
When you take the earbuds out from the charging case, the earbuds will turn on and pair with each other automatically. When they have successfully paired, the LED indicator light of the right earbud will flash blue and red alternately and the earbuds are ready to connect with your Bluetooth® device.

#### 2.1b Connecting with your Bluetooth device:

Turn on Bluetooth in your device and choose “Nokia TWS-201” from the Bluetooth menu to connect.

During the connection process, the LED indicator light on the right earbud will flash blue and red alternately.

The LED indicator lights of the earbuds will flash blue every 10 seconds when they are successfully connected via Bluetooth



2.2 After the initial pairing, the earbuds will automatically connect with your Bluetooth device whenever taken out of the charging case.

2.3 The earbuds will automatically power off if there is no Bluetooth connection within 5 minutes.

### 3. Using your earbuds

#### 3.1. Touch control

L	R
	3 secs
	5 secs
	x 1
	x 1
	1 sec
	2 secs
x 2	x 2
x 3	x 3

#### 4. Additional controls

##### 4.1 Use single earbud :

You can use either left or right bud as a mono headset after initial pairing.

##### 4.2 Reset to the original settings :

Put both buds into pairing mode, press and hold both touch bars simultaneously for 5 seconds until the LEDs turn off.

#### Product and safety information


Remote control functions may vary depending on the model of your device and application. Sound track instructions do not respond to iOS devices. Since devices with Bluetooth wireless technology communicate using radio waves, they do not need to be in direct line-of-sight. Bluetooth devices must, however, be within 10 meters (33 feet) of each other, although the connection may be subject to interference from obstructions such as walls or from other electronic devices.

Frequency Band: 2400 MHz - 2483 MHz

Maximum Radio Frequency Power: -6~+4dBm


## For your safety

EN

 Important: Read these simple guidelines. Not following them may be dangerous or against local laws and regulations. For further info, read the complete user guide.

---

### Switch off in restricted areas

 Switch the device off when a Bluetooth headset use is not allowed or when it may cause interference or danger, for example, in aircraft, in hospitals or near medical equipment, fuel, chemicals, or blasting areas. Obey all instructions in restricted areas.


---

### Interference

 All wireless devices may be susceptible to interference, which could affect performance.


---

### Batteries, chargers, and other accessories

 Use only batteries, chargers, and other accessories approved by HMD Global Oy for use with this device. Do not connect incompatible products.


---

### Protect your hearing

 To prevent possible hearing damage, do not listen at high volume levels for long periods.

---

### Hearing

 Warning: When you use the headset, your ability to hear outside sounds may be affected. Do not use the headset where it can endanger your safety.

---

### Small children

 Your device and its accessories are not toys. They may contain small parts. Keep them out of the reach of small children.

---

## Caution:

- a. Risk of explosion if the battery is replaced by an incorrect type
- b. Do not disposal of a battery into fire or a hot oven, or mechanically crushing or cutting of a battery, that can result in an explosion
- c. Do not leave the battery in an extremely hot environment as this may lead to an explosion or leakage of flammable liquids or gases.
- d. Do not subject the battery to extremely low air pressure, which could lead to an explosion or leakage of flammable liquids or gases.

## Take care of your device

Handle your device with care. The following suggestions help you keep your device operational.

---

- Keep the device dry. Precipitation, humidity, and all types of liquids or moisture can contain minerals that corrode electronic circuits.

---

- Do not use or store the device in dusty or dirty areas.

---

- Do not store the device in high temperatures. High temperatures may damage the device or battery.

---

- Do not store the device in cold temperatures. When the device warms to its normal temperature, moisture can form inside the device and damage it.

---

- Do not open the device other than as instructed in the user guide.

---

- Do not drop, knock, or shake the device or the battery. Rough handling can break it.

---

- Only use a soft, clean, dry cloth to clean the surface of the device.

---

- Do not paint the device. Paint can prevent proper operation.

---



Always return your used electronic products, batteries, and packaging materials to dedicated collection points. This way you help prevent uncontrolled waste disposal and promote the recycling of materials. Electrical and electronic products contain a lot of valuable materials, including metals (such as copper, aluminium, steel, and magnesium) and precious metals (such as gold, silver, and palladium). All materials of the device can be recovered as materials and energy.

### Crossed-out wheeled bin symbol



The crossed-out wheeled bin symbol on your product, battery, literature, or packaging reminds you that all electrical and electronic products and batteries must be taken to separate collection at the end of their working life.

Do not dispose of these products as unsorted municipal waste: take them for recycling. For info on your nearest recycling point, check with your local waste authority.

### Battery info

Your device has an internal, non-removable, rechargeable battery. Do not attempt to remove the battery, as you may damage the device. The battery can be charged and discharged hundreds of times, but it will eventually wear out. Charging time can vary depending on device capability.

### Battery safety

If left unused, a fully charged battery will lose its charge over time. Always keep the battery between 15°C and 25°C (59°F and 77°F) for optimal performance. Extreme temperatures reduce the capacity and lifetime of the battery. A device may temporarily stop working if its battery is too hot or too cold.

Do not dispose of batteries in a fire as they may explode. Obey local regulations. Recycle when possible. Do not dispose as household waste. Use the battery for its intended purpose only. Improper use of, or use of unapproved or incompatible, batteries may present a risk of fire, explosion, or other hazard, and may invalidate any approval or warranty. If you believe the battery is damaged, take it to a service centre or your local shop before continuing to use it. Never use a damaged battery. Do not charge your device during a lightning storm.



## Implanted medical devices

To avoid potential interference, manufacturers of implanted medical devices recommend a minimum separation of 15.3 centimetres (6 inches) between a wireless device and the implanted medical device. Persons who have such devices should:

- 
- Always keep the wireless device more than 15.3 centimetres (6 inches) from the medical device.
- 
- Not carry the wireless device in a breast pocket.
- 
- Switch the wireless device off if there is any reason to suspect that interference is taking place.
- 
- Follow the manufacturer directions for the implanted medical device.
- 

If you have any questions about using your wireless device with an implanted medical device, consult your health care provider.

## Copyrights and other notices

The availability of products, features, apps, and services may vary by region. For more info, contact your dealer or your service provider. This device may contain commodities, technology or software subject to export laws and regulations from the US and other countries. Diversion contrary to law is prohibited.

The contents of this document are provided “as is”. Except as required by applicable law, no warranties of any kind, either express or implied, including, but not limited to, the implied warranties of merchantability and fitness for a particular purpose, are made in relation to the accuracy, reliability or contents of this document. HMD Global reserves the right to revise this document or withdraw it at any time without prior notice.

Reproduction, transfer or distribution of part or all of the contents in this document in any form without the prior written permission of HMD Global is prohibited. HMD Global operates a policy of continuous development. HMD Global reserves the right to make changes and improvements to any of the products described in this document without prior notice.

Manufacturer and importer in EU: HMD Global Oy, Bertel Jungin aukio 9, 02600 Espoo, Finland. HMD Global Privacy Policy, available at <http://www.nokia.com/phones/privacy>, applies to your use of the device.

In the unlikely event that this product is faulty, please return it to the store where you purchased it with your proof of purchase. For more information on this or other products please visit <http://www.nokia.com/phones/support>.

© 2021 HMD Global. All rights reserved. HMD Global Oy is the exclusive licensee of the Nokia brand for phones & tablets. Nokia is a registered trademark of Nokia Corporation.

The Bluetooth word mark and logos are owned by the Bluetooth SIG, Inc. and any use of such marks by HMD Global is under license.

## Declaration of Conformity



Hereby, HMD Global Oy declares that this product is in compliance with the essential requirements and other relevant provisions of Directive 2014/53/EU. A copy of the Declaration of Conformity can be found at :

[www.nokia.com/mobile-declaration-of-conformity](http://www.nokia.com/mobile-declaration-of-conformity).

## FCC Notice to Users

The following statement applies to all products that bear the FCC logo and/or FCC ID on the product label.

This equipment has been tested and found to comply with the limits for a Class B digital device, pursuant to part 15 of the FCC Rules. See 47 CFR Sec. 15.105(b). These limits are designed to provide reasonable protection against harmful interference in a residential installation. This equipment generates, uses and can radiate radio frequency energy and, if not installed and used in accordance with the instructions, may cause harmful interference to radio communications. However, there is no guarantee that interference will not occur in a particular installation. If this equipment does cause harmful interference to radio or television reception, which can be determined by turning the equipment off and on, the user is encouraged to try to correct the interference by one or more of the following measures:

- Reorient or relocate the receiving antenna.
- Increase the separation between the equipment and the receiver.
- Connect the equipment to an outlet on a circuit different from that to which the receiver is connected.
- Consult the dealer or an experienced radio/TV technician for help.

This device complies with part 15 of the FCC Rules.

Operation is subject to the following two conditions:

- (1) This device may not cause harmful interference, and
- (2) This device must accept any interference received, including interference that may cause undesired operation. See 47 CFR Sec. 15.19(a)(3). HMD Global has not approved any changes or modifications to this device by the user. Any changes or modifications could void the user's authority to operate the equipment. See 47 CFR Sec. 15.21

## Industry Canada Notice to Users

This device complies with Industry Canada license-exempt RSS standard(s). Operation is subject to the following two conditions: (1) This device may not cause interference and (2) This device must accept any interference, including interference that may cause undesired operation of the device. See RSS-Gen, Section 8.4. This device complies with ICES-003 requirements for Class B ITE (Information Technology Equipment). CAN ICES-3 (B)/NMB-3(B) This device meets the IC requirements.

