



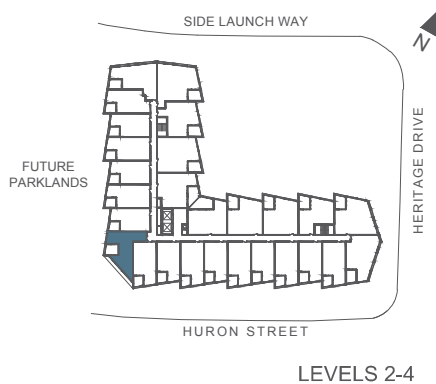
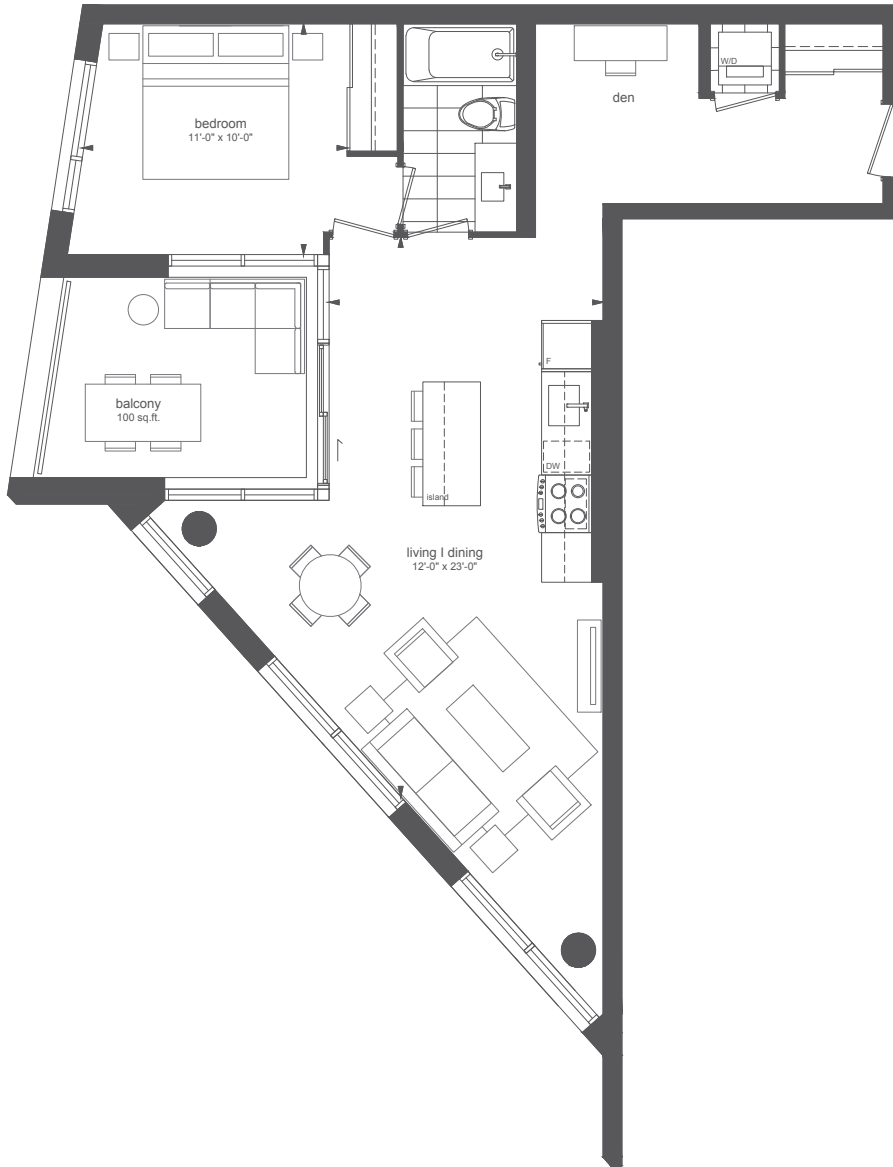
ONE BEDROOM + DEN

780 SQ.FT.
BALCONY 100 SQ.FT.

216 | 316 | 416

HARBOUR HOUSE

COLLINGWOOD



All sizes and specifications are subject to change without notice. E. & O. E.
 Note: Actual usable floor space may vary from the stated floor area. Window & balcony/terrace door locations, size and type may vary without notice E. & O. E. Furniture not included. Terrace condition may require a step(s).
 6th floor sloped ceiling slopes down from mezzanine.



HARBOUR HOUSE

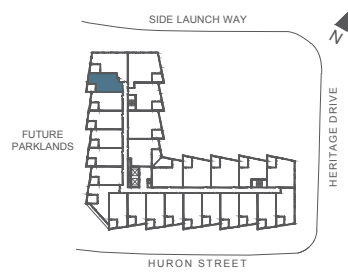
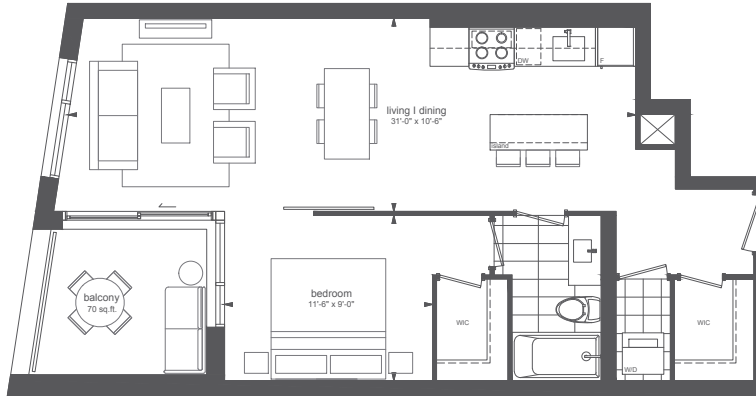
COLLINGWOOD

ONE BEDROOM

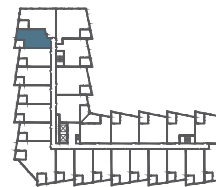
690 SQ.FT.

BALCONY 70 SQ.FT.

222 | 322 | 422 | 521



LEVELS 2-4



LEVEL 5

All sizes and specifications are subject to change without notice, E. & O. E.
 Note: Actual usable floor space may vary from the stated floor area. Window & balcony/terrace door locations, size and type may vary without notice E. & O. E. Furniture not included. Terrace condition may require a step(s).
 6th floor sloped ceiling slopes down from mezzanine.

STREETCAR™
 RETHINK URBAN LIVING

harbourhousecondos.com



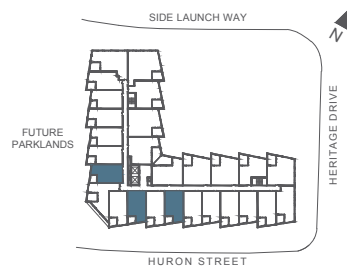
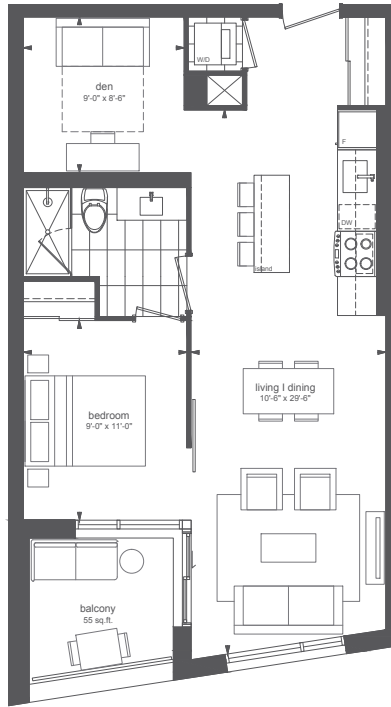
HARBOUR HOUSE

COLLINGWOOD

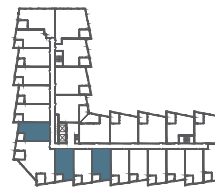
ONE BEDROOM + DEN

695 SQ.FT.
BALCONY 55 SQ.FT.

212		214		217
342		344		347
412		444		447
542		644		516



LEVELS 2-4



LEVEL 5

All sizes and specifications are subject to change without notice, E. & O. E.
 Note: Actual usable floor space may vary from the stated floor area. Window & balcony/terrace door locations, size and type may vary without notice E. & O. E. Furniture not included. Terrace condition may require a step(s).
 6th floor sloped ceiling slopes down from mezzanine.

STREETCAR™
 RETHINK URBAN LIVING

harbourhousecondos.com



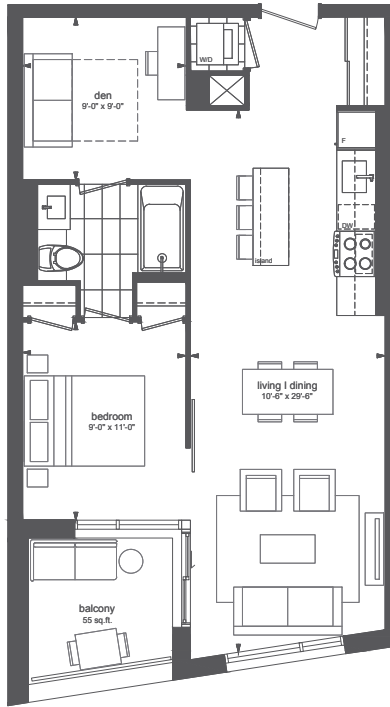
HARBOUR HOUSE

COLLINGWOOD

ONE BEDROOM + DEN

695 SQ.FT.
BALCONY 55 SQ.FT.

~~208~~ | ~~210~~ | ~~219~~ | 221
~~308~~ | ~~340~~ | ~~349~~ | ~~324~~
~~408~~ | 410 | ~~449~~ | ~~424~~
508 | ~~540~~ | ~~648~~ | 520



LEVELS 2-4



LEVEL 5

All sizes and specifications are subject to change without notice, E. & O. E.
Note: Actual usable floor space may vary from the stated floor area. Window & balcony/terrace door locations, size and type may vary without notice E. & O. E. Furniture not included. Terrace condition may require a step(s).
6th floor sloped ceiling slopes down from mezzanine.

STREETCAR™
RETHINK URBAN LIVING

harbourhousecondos.com



HARBOUR HOUSE

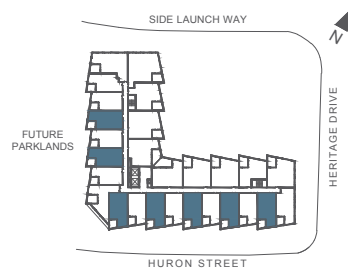
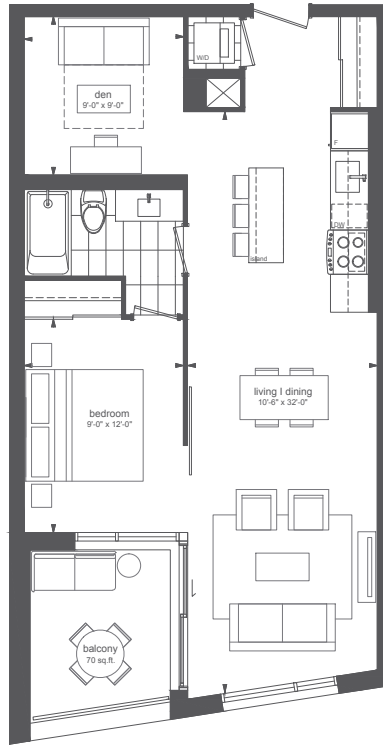
COLLINGWOOD

ONE BEDROOM + DEN

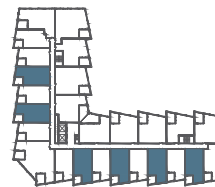
745 SQ.FT.

BALCONY 70 SQ.FT.

207	209	211	213	215	248	220
307	309	344	343	245	348	320
407	409	444	413	446	448	420
507	509	544	543	547	549	



LEVELS 2-4



LEVEL 5

All sizes and specifications are subject to change without notice, E. & O. E.
 Note: Actual usable floor space may vary from the stated floor area. Window & balcony/terrace door locations, size and type may vary without notice E. & O. E. Furniture not included. Terrace condition may require a step(s).
 6th floor sloped ceiling slopes down from mezzanine.

STREETCAR™
 RETHINK URBAN LIVING

harbourhousecondos.com



HARBOUR HOUSE

COLLINGWOOD

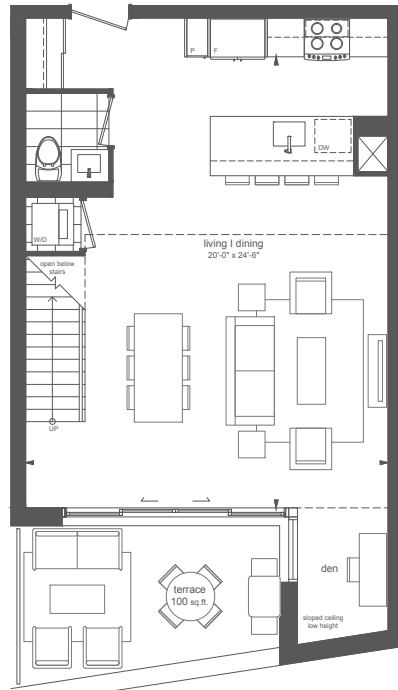
PENTHOUSE

1 BEDROOM + DEN

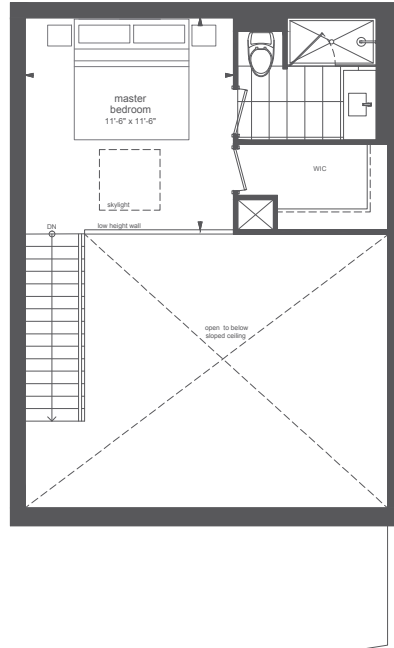
900 SQ.FT.

TERRACE 100 SQ.FT.

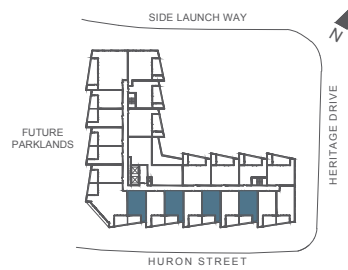
607 | 609 | 611 | 613



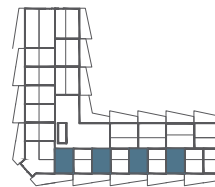
MAIN FLOOR



MEZZANINE



LEVEL 6



LEVEL 6 MEZZANINE

All sizes and specifications are subject to change without notice, E. & O. E.
Note: Actual usable floor space may vary from the stated floor area. Window & balcony/terrace door locations, size and type may vary without notice E. & O. E. Furniture not included. Terrace condition may require a step(s).
6th floor sloped ceiling slopes down from mezzanine.

STREETCAR™
RETHINK URBAN LIVING

harbourhousecondos.com



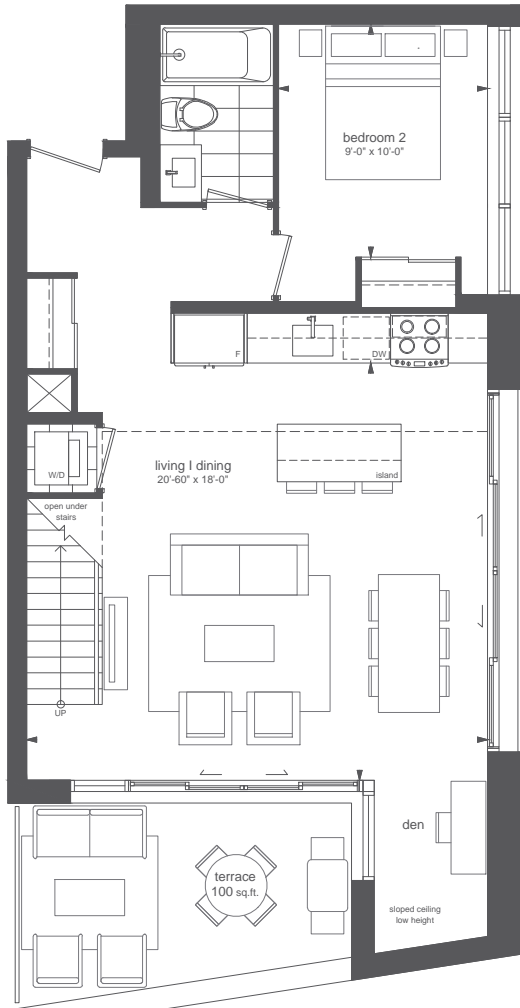
HARBOUR HOUSE

COLLINGWOOD

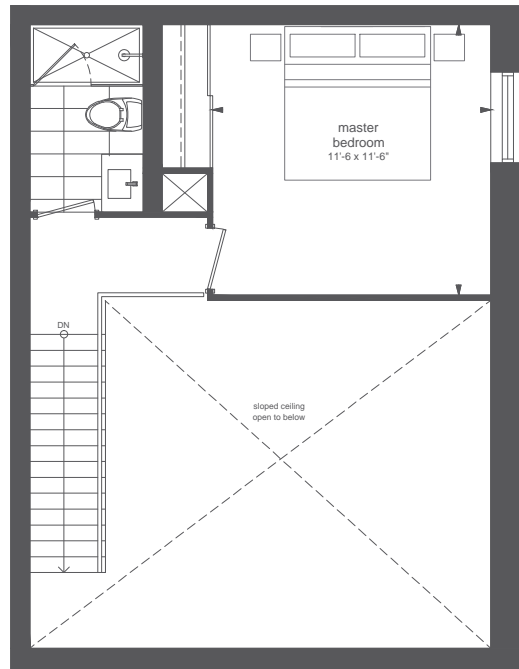
PENTHOUSE

TWO BEDROOMS + DEN
1020 SQ.FT.
TERRACE 100 SQ.FT.

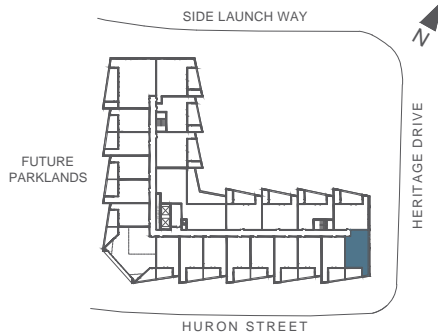
605



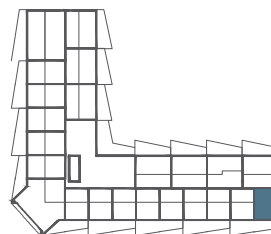
MAIN FLOOR



MEZZANINE



LEVEL 6



LEVEL 6 MEZZANINE

* The City of Toronto recognizes a room such as this with indirect light exposure as a bedroom. It is unknown if the town of Collingwood classifies it the same way. All sizes and specifications are subject to change without notice. E. & O. E.

Note: Actual usable floor space may vary from the stated floor area. Window & balcony/terrace door locations, size and type may vary without notice E. & O. E. Furniture not included. Terrace condition may require a step(s). 6th floor sloped ceiling slopes down from mezzanine.



HARBOUR HOUSE

COLLINGWOOD

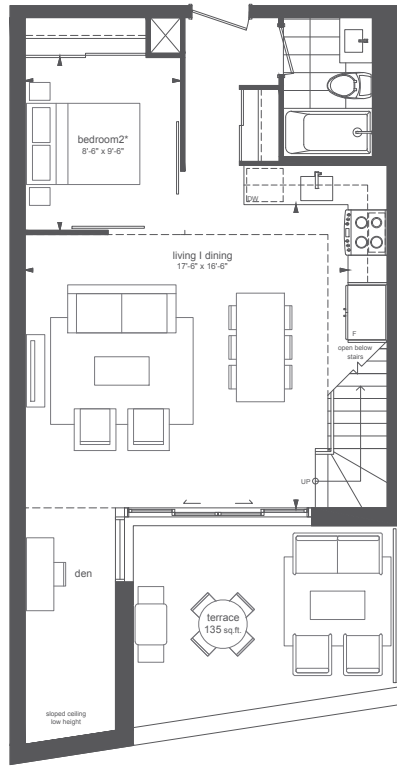
PENTHOUSE

TWO BEDROOMS + DEN

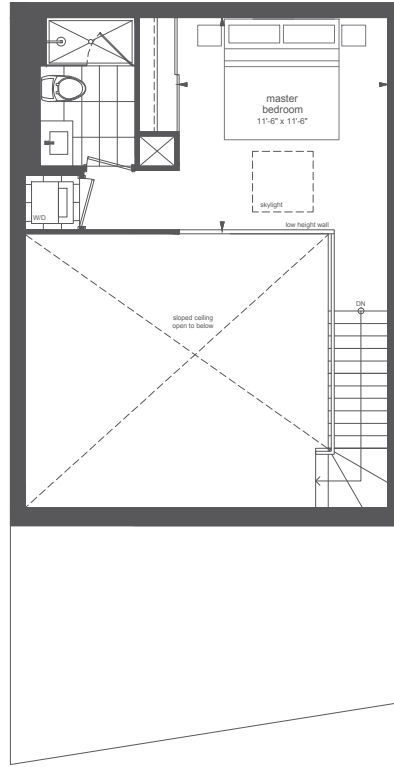
900 SQ.FT.

TERRACE 135 SQ.FT.

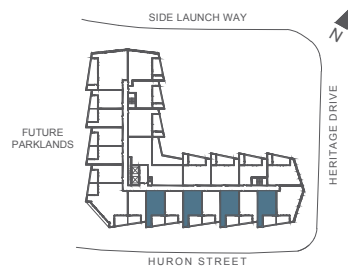
606 | 608 | 640 | 642



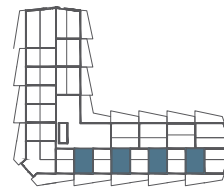
MAIN FLOOR



MEZZANINE



LEVEL 6



LEVEL 6 MEZZANINE

* The City of Toronto recognizes a room such as this with indirect light exposure as a bedroom.

It is unknown if the town of Collingwood classifies it the same way

All sizes and specifications are subject to change without notice, E. & O. E.

Note: Actual usable floor space may vary from the stated floor area. Window & balcony/terrace door locations, size and type may vary without notice E. & O. E. Furniture not included. Terrace condition may require a step(s), 6th floor sloped ceiling slopes down from mezzanine.

STREETCAR™
RETHINK URBAN LIVING

harbourhousecondos.com