

We create technology to transform the everyday, for everyone. Our world is changing at an unprecedented rate. Demographic change, urbanization, globalization, environmental change, resource efficiency, and digitalization are presenting new challenges and opportunities.

Siemens Smart Infrastructure addresses these topics by combining the real and the digital worlds.

Our technology transforms infrastructure, across buildings, electrification, and grids at speed and scale, enabling collaborative ecosystems to accelerate our customers' digital journey to become more competitive, more resilient, and more sustainable.

siemens.com/smart-infrastructure

Published by
Siemens Switzerland Ltd
 Smart Infrastructure
 Global Headquarters
 Thelvetstrasse 1a
 6300 Zug
 Switzerland
 Tel: +41 58 224 24 24

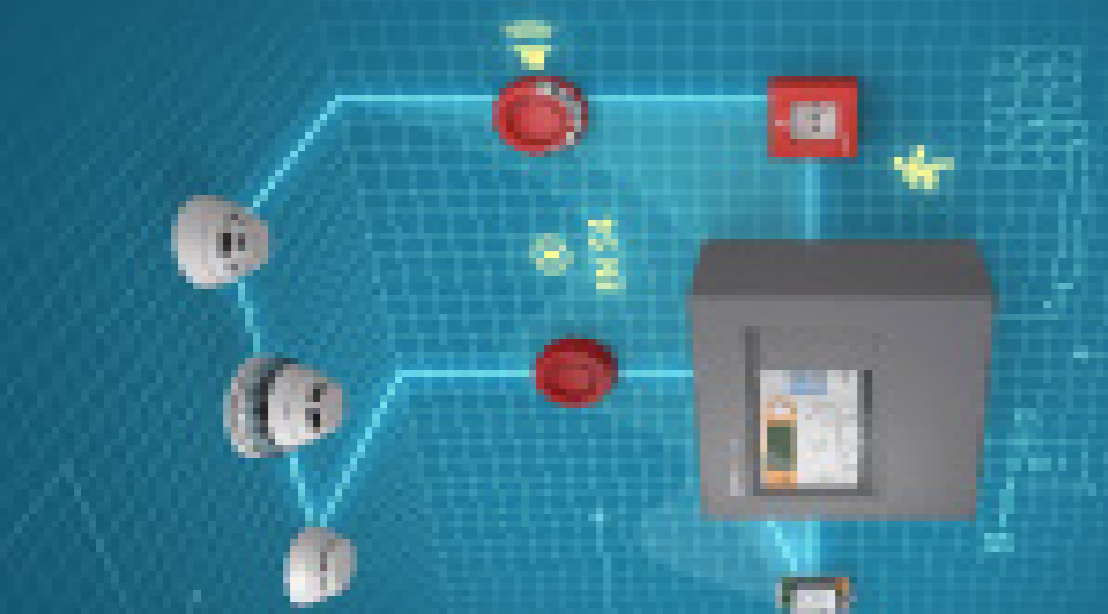
For the U.S. published by
Siemens Industry Inc.
 3617 Parkway Lane
 Peachtree Corners, GA 30092
 United States

Article no.: 5L0195_EN (Status: 06/2025)
 Subject to change and errors. The information given in this document only contains general descriptions and/or performance features which may not always specifically reflect those described, or which may undergo modification in the course of further development of the products. The requested performance features are binding only when they are expressly agreed upon in the concluded contract.
 © Siemens 2025

SIEMENS

Cerberus FIT FC360 – Planning Tool

SMART PROTECTION MATTERS



Cerberus FIT FC360 – addressable fire control panels

1-loop panels

- 1 loop or 2 stubs
- Number of addresses: max. 126



Fire control panel (1L, Compact) FC361-ZZ
 – Housing: 402x372x132 mm
 – Batteries: max. 2x 12 V, 12 Ah
 Order no.: S54433-C112-A1

Fire control panel (1L, Comfort) FC361-ZA
 – Housing: 402x372x211 mm
 – Batteries: max. 2x 12 V, 25 Ah
 Order no.: S54433-C111-A1

2-loop panels

- 2 loop or 4 stubs
- Number of addresses: max. 252



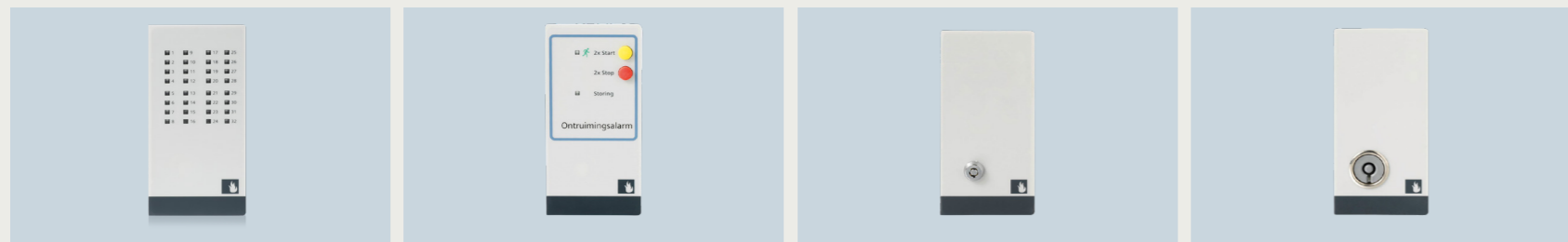
Fire control panel (2L, Compact) FC362-ZZ
 – Housing: 402x372x132 mm
 – Batteries: max. 2x 12 V, 12 Ah
 Order no.: S54433-C119-A1

Fire control panel (2L, Comfort) FC362-ZA
 – Housing: 402x372x211 mm
 – Batteries: max. 2x 12 V, 25 Ah
 Order no.: S54433-C120-A1

Shared properties

- Total current capacity: max. 2.5 A
- 4 programmable inputs/outputs (DC 24 V/max. 0.1 A and 0.2 A in total)
- 3 programmable potential-free relay outputs (DC 60 V/max. 2.0 A)
- 2 collective sounder circuits (DC 24 V/max. 0.5 A)
- Auxiliary power output (DC 24 V/max. 0.2 A)

Options



LED indicator (32 zones) FTO3603-Z1
 – Visual fire zone indication
 – Up to 32 fire zones
 Order no.: S54433-B118-A1

Evacuation module (NL) FTO3601-H1
 – Special option for The Netherlands
 – Independent control of EVAC zone
 – Acc. NEN 2575
 Order no.: S54433-B116-A1

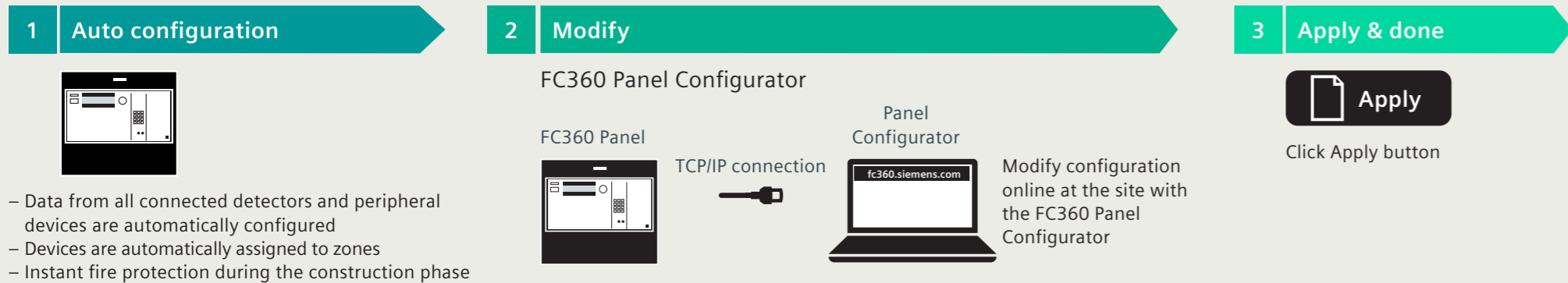
Key switch FCA3601-Z1
 – Standard key switch to provide level 2 (user) access on panel
 Order no.: S54433-N113-A1

Key switch (Nordic) FCA3603-Z1
 – Special key switch (Nordic) to provide level 2 (user) access on panel
 Order no.: S54433-N115-A1

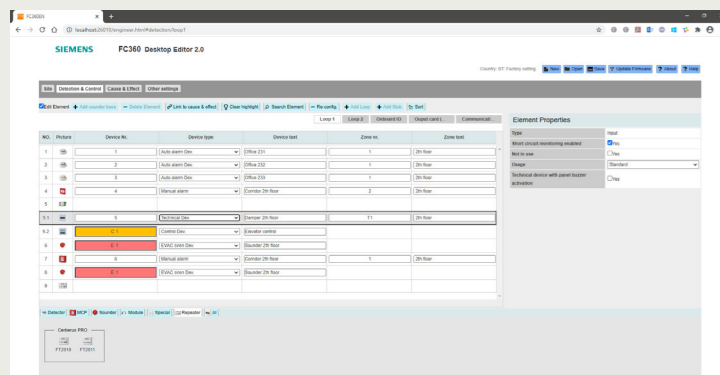
FC360 Panel Configurator (online)

Panel configuration in three easy steps.

The online tool is used to configure the panel on site. The panel has an integrated Web server that can be accessed with a Web browser. No additional software is needed. The TCP/IP connection to the panel is established via the Web address fc360.siemens.com.

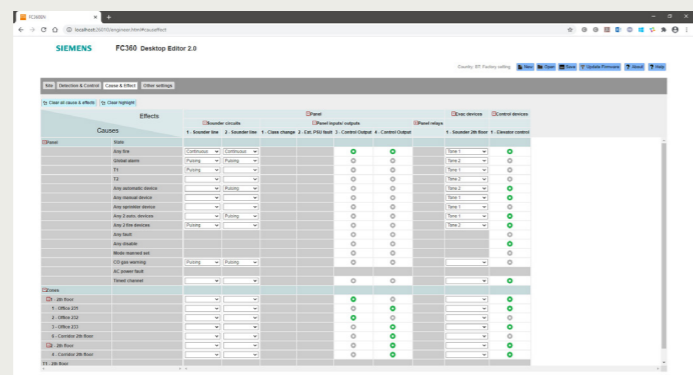


Detection and control view



The FC360 configuration tool is simple to understand and use. The connected devices are listed in a table in their order of wiring, allowing the user to easily visualize the devices as installed. Outputs and sounders can be assigned into one of 32 control or evacuation zones and an appropriate description text (e.g. "door release") can be added for more clarity.

Cause and effect matrix



Most systems require all alarming devices and control outputs to operate with any fire. This operation is available by default. Where more complex controls are required, the FC360's unique cause-and-effect matrix makes any required changes easy and logical.

FC360 Desktop Editor (offline)

The FC360 Desktop Editor is a tool for viewing the system's configuration offline as well as making text or cause-and-effect changes.

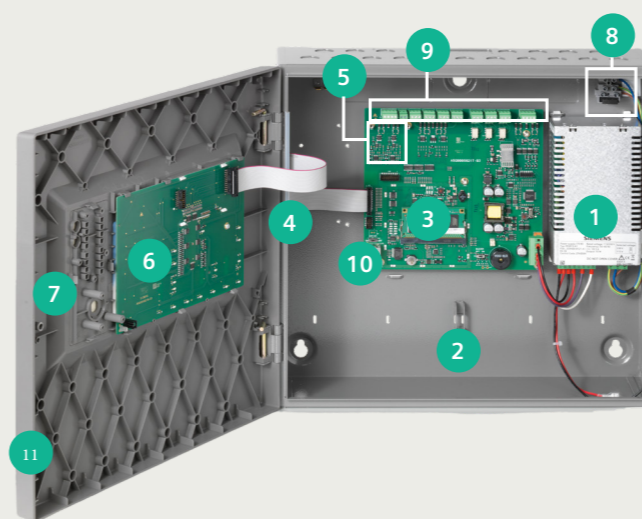
In addition, the tool provides installers with self-learning opportunities where they can create their own "virtual" system. This quickly builds solid expertise and experience and reduces training costs and effort.

Download the FC360 Desktop Editor



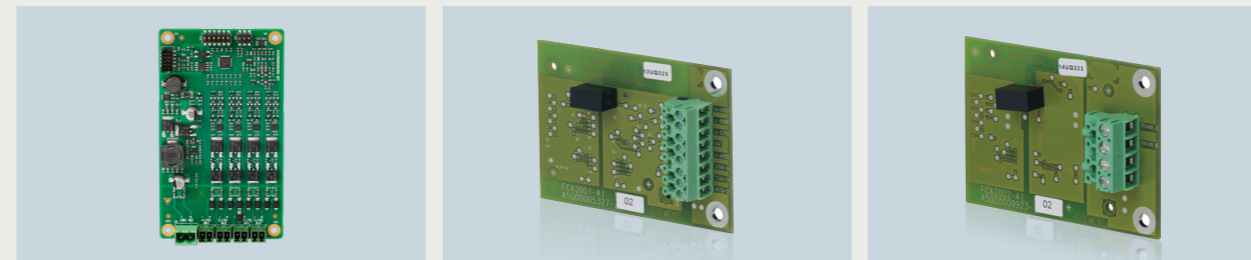
Control unit

Hardware components



Legend

- | | |
|---|--|
| 1 Power supply | 8 Mains fuse |
| 2 Space for batteries | 9 Main board connectors:
– 2 collective sounder circuits
– 24 V auxiliary outputs |
| 3 Mainboard | – 4 programmable inputs/outputs
– 3 programmable relay outputs
– Loop connector |
| 4 Output card (4M) (optional) | 10 Ethernet connector |
| 5 Space for RS232/485 module (optional) | 11 Detachable door |
| 6 User interface (PMI) | |
| 7 Space for options:
– Evacuation module (NL)
– LED indicator (32 zones)
– Key switch/key switch (Nordic) | |



Output card (4M) FCA3603-Z1
 – 4 configurable monitored outputs (DC 24 V)
 – Output current per output: 1.0 A
 – Max. current of output card: 2.0 A
 Order no.: S54433-A114-A1

RS232 module (isolated) FCA2001-A1
 – Communication module for peripheral devices with RS232 interface (e.g. event printer DL3750+)
 Order no.: A5Q00005327

RS485 module (isolated) FCA2002-A1
 – Communication module for peripheral devices with RS485 interface
 Order no.: A5Q00009923

Note: Unit can be powered from the integral power supply or from an additional external power supply.

Alarming highlights

In the event of a fire it is essential to alert and evacuate people as fast as possible. A wide product portfolio range offers alarm devices for acoustic and optical alarming. All devices are loop powered and constantly monitored.

Sounder

The sounder creates an acoustic alarm signal in case of an event. All devices offers a broad range of tone patterns. The acoustic perception is outstanding because all tones are synchronized.

- Certified for acoustic alarming according EN 54-3
- 3 different sound levels are selectable (minimum / medium / maximum)
- 16 integrated tone patterns

Voice

The devices with voice messages are able to play a precise voice instruction for different events in the building. With help of a voice message, the evacuation process is faster and the building occupants receive clear instructions.

- Certified for acoustic alarming according EN 54-3.
- Languages (15 integrated, 2 customizable)
- Message categories (3 predefined): EVAC FIRE, EVAC EMERGENCY, TEST

Languages (15 integrated, 2 customizable)

– English	– Finnish
– German	– Danish
– French	– Polish
– Italian	– Portuguese
– Spanish	– Turkish
– English UK	– Russian
– Dutch	– Custom language 1
– Sweden	– Custom language 2
– Norwegian	

Customer-specific voice message

1. Order the service "Conversion of voice message FDSS227" to create a customer-specific audio library
2. Order customer-specific devices (...C) with custom audio library ID

Beacon

Addressing two senses – an optical and an acoustical signal – speeds up the alert and evacuation process. We increase the awareness of the optical signal with a high flash intensity and a very short pulse length. The device has multiple options for brightness which can be adjusted according to the room size.

- Certified for optical alarming according EN 54-23
- Additional light intensity setting (supplementary optical indication) designed for system extensions or migration.

Wall devices

Category W – wall mounting

White LED High: W-3.2-10 Mid: W-2.4-7.5 Low: O-2-6.2	Red LED High: W-2.8-8.8 Mid: W-2.4-7.5 Low: O-2-6.2
---	--

O = Open category: Wall mounted, cubic coverage as category W

Ceiling devices

Category C – ceiling mounting

White LED High: O-4-15 Mid: C-3-12 Low: O-2.5-6.5	Red LED High: C-3-12 Mid: C-3-10 Low: O-2.5-6.5
--	--

O = Open category: Ceiling mounted, cylindrical coverage as category C

