



DIGITAL INDUSTRIES SOFTWARE

Program planning and project management

Leveraging a program management solution to plan, manage and execute processes

Benefits

- Plan projects in Teamcenter effectively
- Meet target dates consistently with accurate, up-to-date project and resource information
- Maximize productivity with accurate data for every task
- Achieve visibility across projects, domains and lifecycles
- Minimize time spent scheduling by generating schedules automatically
- Plan against accurate requirements and goals confidentially

Summary

In today's fast-paced world, your products, organization and supply chain become more complex, as well as the processes necessary to get to market on time and on budget.

Standalone project management systems lack integration with the cross-domain processes that are crucial for project execution. Project leaders find themselves in a constant struggle to manually reconcile information across multiple systems. Manual efforts result in suboptimal planning, missed delivery dates, cost overruns and over- and underutilization of resources.

Using Teamcenter® project management software with a project lifecycle management (PLM) solution, easy-to-use tools can help you plan and manage projects, even if you are not a program management expert. You will have visibility across projects, domains and lifecycles, allowing you to support a top-down and bottom-up approach to program planning. With program planning inside of PLM, you can confidently plan against accurate requirements and goals while seeing what is happening with real-time dashboard views.

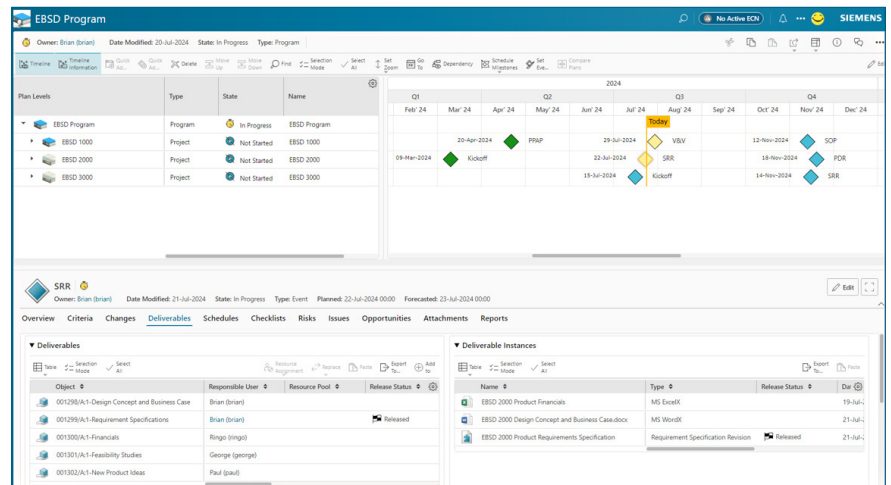
Teamcenter is part of the Siemens Xcelerator business platform of software, hardware and services.

Features

- Manage program events and criteria
- Track project performance against events
- Get up-to-date status and instant access to program information
- View program analytics and get dashboard access for on-demand information
- See visuals into plan performance, program deliverable status, event-level information and change impacts
- Integrate program planning and project management in Teamcenter

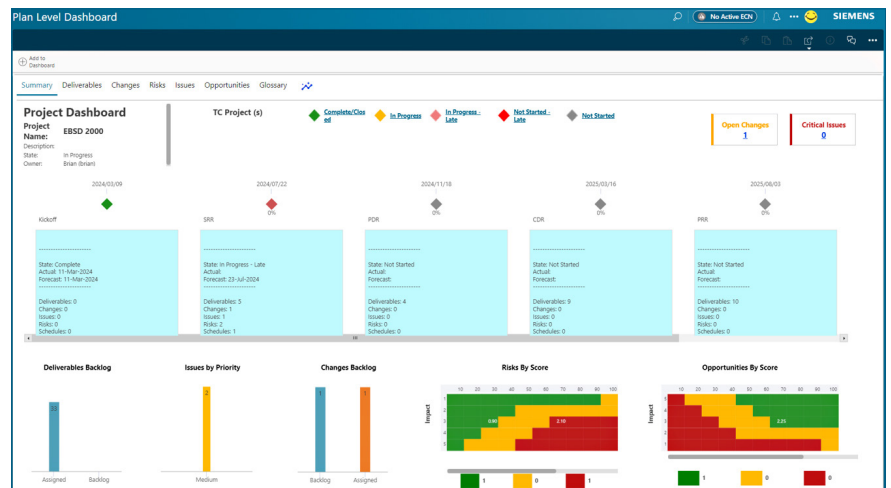
Adaptable program management

Manage program events and criteria, and track performance against those events. You can also manage risks and track issues while supporting formal gate reviews and approvals. Keep your entire team informed with up-to-date statuses and instant access to program information.



Dashboards and program analytics

Program planning requires real-time visibility. In Teamcenter, program analytics and dashboards provide accurate information about your program on-demand. You can see plan performance, program deliverable status, event-level performance, the impact of change and more.



Integrate change

Adjusting to account for change is a must with program planning, and with Teamcenter, you can coordinate the design and release of items under configuration control across multiple, often unrelated, projects. With full visibility to the scope of all changes in a program, you can make accurate estimations regarding resources and timing. Integrating planning and project management in Teamcenter allows you to generate schedules automatically and support program execution based on templates and business rules or create them manually.

Powered by PLM

Siemens Digital Industry Software's integrated program management solution offers better visibility into resources, scope of work, pipeline information, project-related costs, status and more. With this visibility, you can effectively coordinate resources across your program and clearly understand impacts across projects. You can also create estimates based on past performance and integrate cost, schedule, requirements, inputs and outputs for a complete work package definition.

**Siemens Digital
Industries Software**
[siemens.com/software](https://www.siemens.com/software)

Americas
1 800 498 5351

Europe
00 800 70002222

Asia-Pacific
001 800 03061910

For additional numbers, click [here](#).

© 2024 Siemens. A list of relevant Siemens trademarks can be found [here](#). Other trademarks belong to their respective owners.

48753-D3 10/24 C